



Common Mode Choke

EPA3393 & EPA3393-LF

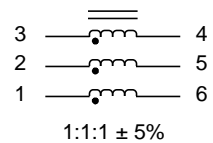
- Greater or equal to 140 impedance @ 1 GHz
- Add "-LF" after part number for Lead-Free
- Material meets Class 130
- 1500 Vrms Isolation

Electrical Parameters @ 25° C

| OCL (μ H Min.) | Interwinding Capacitance (pF Ref.) | Leakage Inductance (μ H Ref.) | DCR (Max.) | Impedance (Min.) |
|------------------------|---------------------------------------|---------------------------------------|----------------|----------------------|
| @ 100 KHz, 0.1 Vrms | @ 100 KHz, 0.1 Vrms | @ 100 KHz, 0.1 Vrms | | @ 1 GHz |
| 2.0 | 1.3 | 0.08 | 0.01 | 140 |

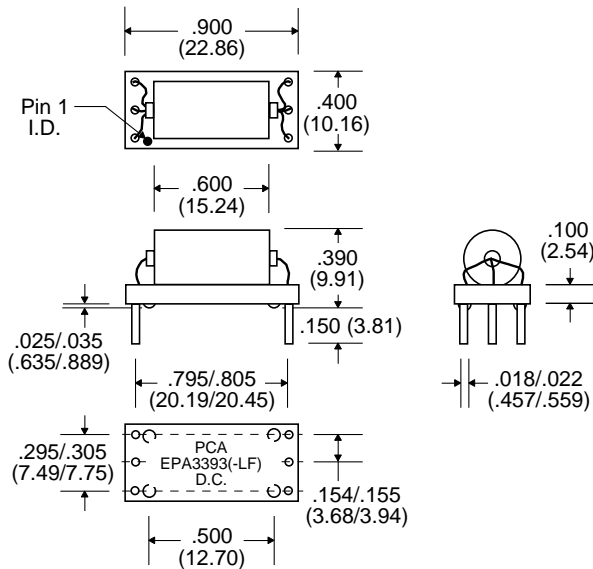
| Notes : | EPA3393 | EPA3393-LF |
|---|----------------|------------------|
| 1. Lead Finish | SnPb | Hot Tin Dip (Sn) |
| 2. Peak Solder Rating (for wave solder process Only) | 245°C | 260°C |
| 4. Weight | TBD grams | TBD grams |
| 5. Packaging Information (Tube) | TBD pcs / tube | TBD pcs / tube |

Schematic

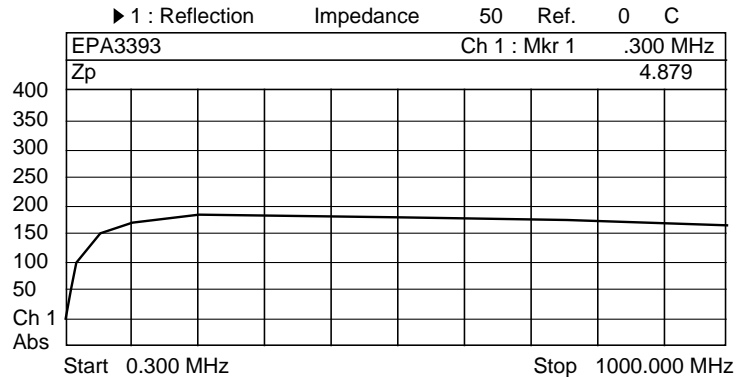


| 1 : Mkr | (MHz) | |
|---------|---------|-------|
| 1: | 0.30 | 4.879 |
| 2: | 1.00 | 10.75 |
| 3: | 10.00 | 68.08 |
| 4: | 50.00 | 139.3 |
| 5: | 100.00 | 166.2 |
| 6: | 200.00 | 180.3 |
| 7: | 500.00 | 183.4 |
| 8: | 1000.00 | 172.6 |

Package



Typical Zp Graph



Unless Otherwise Specified Dimensions are in Inches /mm ± .010 / .25