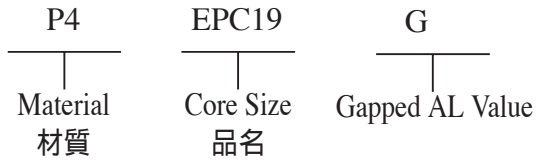


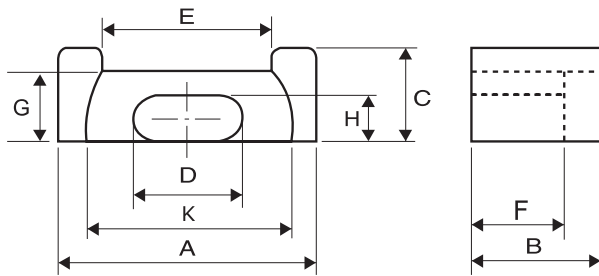
Type : EPC Cores

Ordering Code:

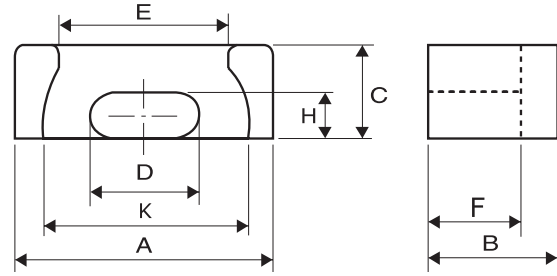


Shape:

Type:1



Type:2



DIMENSIONS

CORES	DIMENSIONS (mm)									Type
	A	B	C	D	E	F	G	H	K	
EPC10	10.20 ± 0.30	4.05 ± 0.15	3.40 ± 0.15	5.00 ± 0.10	5.30min	2.55min	—	1.90 ± 0.10	7.60min	2
EPC10A	10.20 ± 0.30	4.05 ± 0.15	3.40 ± 0.15	5.00 ± 0.10	5.70min	2.55min	—	1.90 ± 0.10	7.90min	1
EPC12.6	12.40 ^{+0.40} / _{-0.00}	5.75 ^{+0.13} / _{-0.00}	3.60 ^{+0.00} / _{-0.25}	6.20 ^{+0.00} / _{-0.30}	7.32 ^{+0.30} / _{-0.00}	3.25 ^{+0.20} / _{-0.00}	—	2.30 ^{+0.00} / _{-0.18}	8.80 ^{+0.30} / _{-0.00}	2
EPC13	13.20 ± 0.25	6.60 ± 0.20	4.60 ± 0.15	5.60 ± 0.15	8.30min	4.50 ± 0.20	—	2.05 ± 0.10	10.70 ± 0.20	1
EPC13A	13.50 ± 0.25	6.60 ± 0.20	4.60 ± 0.15	5.60 ± 0.15	8.50min	4.50 ± 0.20	—	2.05 ± 0.10	11.00 ± 0.20	1
EPC13C	13.30 ± 0.30	6.50 ± 0.20	4.40 ± 0.15	5.60 ± 0.15	9.00 ± 0.30	4.70 ± 0.20	—	2.05 ± 0.10	10.70 ± 0.20	2
EPC14.5	14.50 ± 0.30	7.40 ± 0.20	6.00 ± 0.15	7.00 ± 0.15	10.10 ± 0.25	5.50 ± 0.15	—	3.20 ± 0.10	12.30 ± 0.30	2
EPC17	17.50 ± 0.30	8.55 ± 0.20	6.00 ± 0.15	7.70 ± 0.15	12.0 ± 0.50	6.05 ± 0.20	—	2.80 ± 0.10	14.50 ± 0.30	1
EPC18	18.40 ± 0.30	13.20 ± 0.15	4.10 ± 0.15	9.10 ± 0.15	10.70min	10.30 ± 0.15	—	2.65 ± 0.10	13.10min	1
EPC19	19.10 ± 0.40	9.75 ± 0.20	6.00 ± 0.15	8.50 ± 0.15	13.10min	7.25 ^{+0.20} / _{-0.10}	—	2.50 ± 0.10	15.80min	1
EPC19A	19.60 ± 0.50	9.75 ± 0.20	6.00 ± 0.20	8.20 ± 0.20	13.60 ± 0.50	7.25 ± 0.20	—	2.40 ± 0.15	16.40 ± 0.50	1
EPC19B	19.60 ± 0.50	9.75 ± 0.20	6.00 ± 0.20	8.20 ± 0.20	13.40 ± 0.50	7.25 ± 0.20	—	2.40 ± 0.15	16.40 ± 0.50	1
EPC19.5	19.50 ± 0.40	10.90 ± 0.20	6.00 ± 0.15	8.50 ± 0.15	13.40min	8.40 ± 0.15	4.60 ± 0.15	2.40 ± 0.10	16.20min	1
EPC19.6	19.60 ± 0.40	12.34 ± 0.25	4.12 ± 0.10	10.02 ± 0.15	14.50 ± 0.35	9.25 ± 0.20	—	2.03 ± 0.10	15.75 ± 0.35	2
EPC19.6/30	19.60 ± 0.40	15.30 ± 0.25	4.12 ± 0.10	10.02 ± 0.15	14.50 ± 0.35	12.25 ± 0.20	—	2.03 ± 0.10	15.75 ± 0.35	2
EPC20	20.00 ± 0.40	12.34 ± 0.25	4.12 ± 0.15	10.02 ± 0.15	14.90 ± 0.35	9.25 ± 0.20	—	2.03 ± 0.15	16.15 ± 0.35	1
EPC21.9	21.90 ± 0.30	14.50 ± 0.20	7.30 ± 0.15	9.50 ± 0.15	14.70min	11.55 ± 0.15	—	4.20 ± 0.15	16.40min	1
EPC25	25.40 ± 0.50	12.50 ± 0.25	8.00 ± 0.25	10.50 ± 0.25	18.35 ± 0.40	9.00 ± 0.20	—	4.00 ± 0.20	21.05 ± 0.40	1
EPC25/30	25.40 ± 0.50	15.10 ± 0.25	8.00 ± 0.25	10.50 ± 0.25	18.35 ± 0.40	11.60 ± 0.20	—	4.00 ± 0.20	21.05 ± 0.40	1



EFFECTIVE PARAMETERS

CORES	EFFECTIVE PARAMETERS				
	$C_i(\text{mm}^{-1})$	$L_e(\text{mm})$	$A_e(\text{mm}^2)$	$V_e(\text{mm}^3)$	$Wt(\text{g/set})$
EPC10	2.03	19.28	8.36	161.23	0.92
EPC10A	2.18	18.73	8.61	161.27	0.88
EPC12.6	1.56	22.51	14.42	324.59	1.44
EPC13	2.46	30.60	12.50	382.00	2.08
EPC13A	2.55	31.08	12.18	378.55	2.12
EPC13C	2.56	29.91	11.69	349.65	2.20
EPC14.5	1.97	24.38	12.39	301.97	1.73
EPC17	1.78	40.20	22.80	917.00	4.62
EPC18	2.49	55.11	22.09	1217.38	6.36
EPC19	2.03	46.10	22.70	1047.00	5.20
EPC19A	1.88	43.30	23.00	995.90	5.38
EPC19B	2.26	49.38	21.89	1080.93	5.30
EPC19.5	1.94	41.99	21.64	908.69	5.90
EPC19.6	2.95	52.33	17.70	926.24	5.42
EPC19.6/30	3.45	63.48	18.38	1166.76	6.70
EPC20	2.89	53.24	18.40	979.62	5.52
EPC21.9	1.71	63.15	36.90	2330.24	12.84
EPC25	0.97	52.73	39.18	2866.93	12.16
EPC25/30	1.69	67.34	40.61	2734.68	14.32

ELECTRICAL CHARACTERISTICS

CORES	$AL \pm 25\% (\text{nH/N}^2)$						$AL \pm 30\% (\text{nH/N}^2)$		
	P4	P41	P46	P5	A05	A07	A10(L)	A121(L)	A151(L)
EPC10	820	800		720		1180			
EPC10A	870								
EPC12.6	1000			800					
EPC13	910	890	990	770					
EPC13A	910	890	955	770			3240		
EPC13C						1420			
EPC14.5	1200								
EPC17	1360	1320	1500	1140					
EPC18	1000								
EPC19	940	910	1350	780			3560	4130	
EPC19A	1100			930					
EPC19B	1100								
EPC19.5	1040								
EPC19.6	860								
EPC19.6/30	860								
EPC20	820								
EPC21.9	1390								
EPC25	1550	1500	2300	1290					
EPC25/30	1500								

Remark:

1. AL Value Testing Condition : 10kHz, 50mV, 100Ts. If testing condition is different from ACME's, please specify upon request & ordering.
2. Gapped core is available, please specify upon request & ordering. ACME's standard gapped core set is a combination of one gapped core and one ungapped core. If gapping on both pcs to make a set is needed, please specify upon request & ordering.
3. L : Mirror Finished Lapping. Please specify upon request & ordering by adding "L" at the end of Core Size if you need.