

# 5V 400mA DC-DC Converter EPC1010

## Features

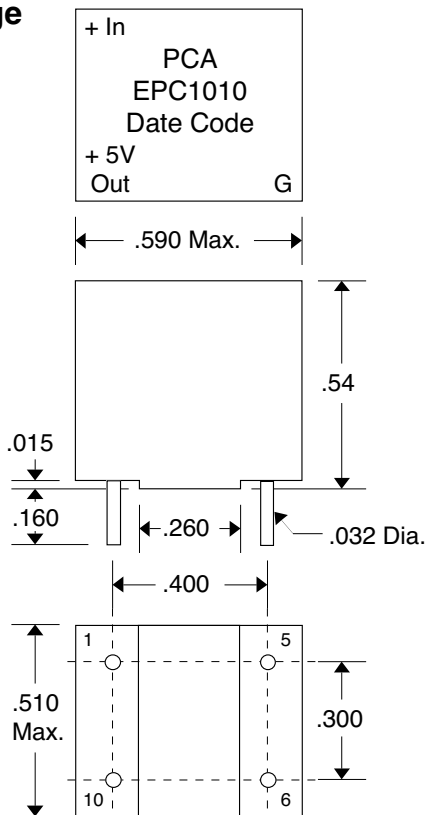
- 10V to 40V Input voltage
- Internal temporary short circuit protection
- Low quiescent current & high efficiency
- Output voltage regulated to  $\pm 2\%$

## Electrical Specifications

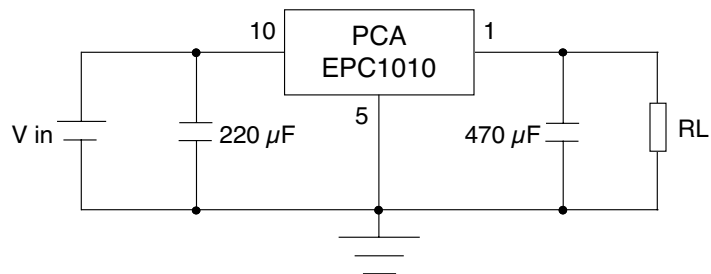
Parameters	Min.	Typ.	Max.	Unit
Input Voltage ( $V_{in}$ )	10		40	Volts
Output Voltage ( $V_o$ ) (@ $V_{in} = 15V$ to $30V$ , $I_o = 0$ to $400$ mA, Temp. = $25^{\circ}C \pm 5^{\circ}C$ )	4.9	5.0	5.1	Volts
Output Current ( $I_o$ )	0		400	mA
Short Circuit Current Limit (@ $V_{in} = 15V$ )			250	mA

Parameters	Min.	Typ.	Max.	Unit
Quiescent Current (@ $V_{in} = 15V$ )		3		mA
Efficiency (@ $I_o = 200$ mA, $V_{in} = 15V$ , Temp. = $25^{\circ}C \pm 5^{\circ}C$ )	70	80		%
Operating Temperature	-10	25	70	$^{\circ}C$
Storage Temperature	-25		85	$^{\circ}C$

## Package



## Test Circuit



Pin 1 = V out +  
Pin 5 = Gnd  
Pin 10 = V in +  
Pin 6 = N.C.

\*Capacitors should be mounted less than 20mm from pins