

## Refrigerators (Combis)

MODEL : \* ERF-387NI

### DESPIECE

ATENCIÓN:

MODELO DE FÁBRICA: ERF-387NL

FIJAROS EN ETIQUETA DE CALIDAD:

TECHNICAL NAME: ERF-387NL

DOOR COLOUR: N/G INOX 04

N/G INOX

S 06 INOX 07

HANDLE TYPE: HIDDEN (ASA TIPO UÑERO)

#### ✓ Caution

: In this Manual, some parts can be changed for improving, their performance without notice in the parts list. So, if you need the latest parts information, please refer to PPL(Parts Price List) in Service Information Center(<http://svc.dwe.co.kr>).

# Frigorífico Combi No Frost (1,854 mts)

## ERF-387MI



Frigorífico Combi de 337 l.  
Capacidad del congelador de 114 l  
Capacidad del frigorífico de 223 l.

Clase energética A

Control mecánico

Sistema No Frost

Multi Net Flow system

Función off

Gas ecológico libre CFC

### **Sección Congelador**

Congelador 4\*\*\*\*

3 cajones de gran capacidad

### **Sección Refrigerador**

Estanterías de cristal con marco reforzado

Doble cajón para verduras y frutas

### **Puerta**

Puertas reversibles

Look Inox

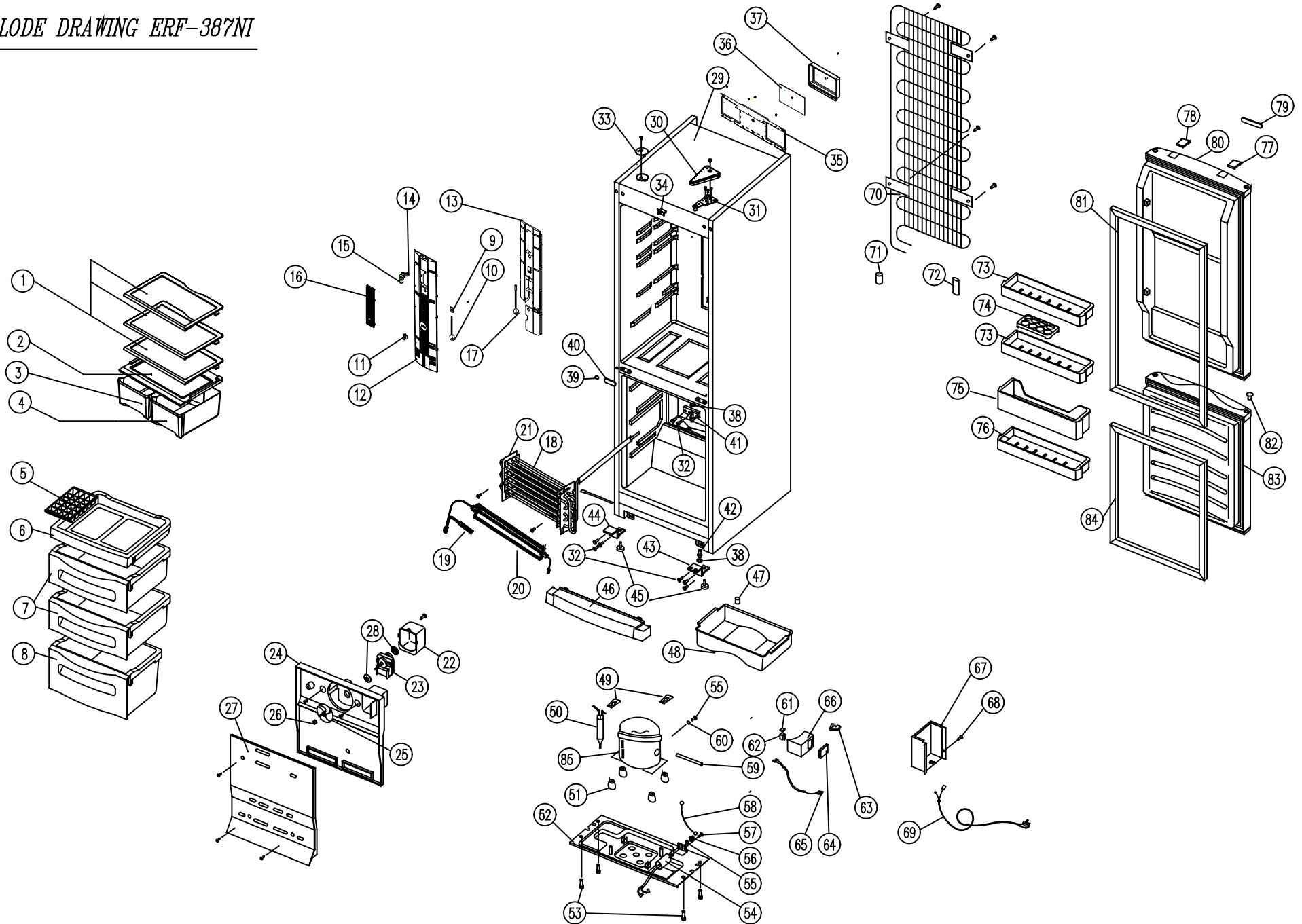
### **Datos generales**

Medidas: 600 x 1854 x 634  
(an, al, pr, en mm)

Peso: 76 kg.



EXPLODE DRAWING ERF-387NI



EXPLODE DRAWING Nº	PART CODE	PART NAME	COLOUR	ERF-387NI
1	3017839400	GLASS SHELF (INSERT TYPE) '04		3
2	3001402200	COVER GLASS V/CASE (INSERT TYPE) '04		1
3	DMS1181910	CASE VEGETABLE *L '04 BLUE MILKY 2006	BLUE MILKY	1
4	DMS1182010	CASE VEGETABLE *R '04 BLUE MILKY 2006	BLUE MILKY	1
5	3011163200	CASE ICING		1
6	3011115940	CASE FD		1
7	3011115410	CASE FC WITHOUT PRINTING		2
8	3011115230	CASE FA		1
9	30143C6260	V-PCB AS		1
10	3012751400	HARNESS V PCB DUCT		1
11	3013410900	KNOB R CONTROL		1
12	3011495700	COVER MULTI DUCT 366N		1
13	3013353800	INSU MULTI DUCT 366		1
14	3017903900	SOCKET LAMP AS		1
15	3013600700	LAMP		1
16	3015510100	WINDOW R	BLUE MILKY	1
17	3012731801	SENSOR R AS		1
18	3017045600	EVAPORATOR AS		1
19	3017200420	TEMPERATURE FUSE		1
20	DMS2806810	GLASS HEATER AS AUTO MODIFIED 2005		1
21	3012733910	D SENSOR		1
22	3010615600	BRACKET FAN MOTOR		1
23	3011804710	MOTOR FAN AS SHAFT 3,17 A GRADE 230V/50HZ		1
24	3018905601	LOUVER F B 38./41.		1
25	3011801410	FAN GRADO A		1
26	3011200520	FIXTURE FAN RING (SPRING) DAEWOO 2005		1
27	3018913900	LOUVER F A 38./41.		1
28	3010107100	ABSORBER FAN MOTOR (BUSHING)		2
29	-	ASSY CAB URT 386N		1
30	3011494300	COVER *T HINGE (D/G)	DARK GREY	1
31	3012922600	HINGE *T AS		1
32	3016004900	SPECIAL BOLT C		9
33	3011477500	COVER CAB HARNESS (D/G)	DARK GREY	1
34	3011783400	SWITCH DOOR NOBLE GREY	NOBLE GREY	1
35	3010545300	BOX PCB	SILVER	1
36	30143C7060	M-PCB AS N R-134		1
37	3011477600	COVER PCB BOX	SILVER	1
38	3016005500	SPECIAL WASHER HINGE		1
39	DMS0920210	CAP SCREW ( (DARK GRAY)	DARK GREY	1
40	3010920300	CAP SCREW HOLE		1
41	3012924800	HINGE*M COMMON 2005		1
42	3014909100	SHAFT HI *U KOREA 2005		1
43	3012925510	HINGE UNDER R 36/34/38/39/41/40 2005		1
44	3012925500	HINGE UNDER L 36/34/38/39/41/40 2005		1
45	3012104600	FOOT ADJUSTING AS		1
46	DMS1467530	COVER CAB BRACKET L (NOBLE GREY)	NOBLE GREY	1
47	3010919700	CAP DRAIN HOSE		1
48	3011162700	CASE VAPORY		1
49	3012005300	FIXTURE COMP		2
50	3016802210	DRYER AS 2005		1
51	3010103400	ABSORBER COMP (SANYO COMPRESSOR)		4
52	DMS0001600	BASE COMP (SANYO COMPRESSOR)		1
53	3016004300	SPECIAL SCREW A		4

EXPLODE DRAWING N°	PART CODE	PART NAME	COLOUR	ERF-387NI
54	DMS6402129	CAPACITOR RUNNING FINISH 4uF		1
55	DMS6006510	SPECIAL WASHER R/C		2
56	DMS6006410	SPECIAL NUT R/C		1
57	DMS1B00100	SCREW MACHINE (EARTH SANYO)		1
58	3012735220	HARNESS EARTH (SANYO)		1
59	3014418210	PIPE CHARGE (SANYO)		1
60	DMS1B00200	SPECIAL WASHER EARTH		1
61	DMS1A00100	SWITCH OL 4TM232RHBYY-53 (SANYO)		1
62	DMS1C00100	SWITCH PTC PTH7M330MD2 (SANYO)		1
63	DMS1200100	CLAMP CORD A		1
64	DMS1200200	CLAMP CORD B		1
65	3012731902	HARNESS RELAY COMMON		1
66	DMS0527900	RELAY BOX		1
67	3011454100	COVER MECH HOUSING		1
68	7112401011	SCREW TAPPING 4*10		1
69	3011343340	CORD POWER AS SCHUK 2 PIN		1
70	3014434501	PIPE WI-CON AS		1
71	4016C08014	ABSORBER PIPE C EXTRUSION 20gr		1
72	DMS7792302	SEALING DIVISION		1
73	DMS9008740	POCKET EGG WITHOUT PRINTING		2
74	3011163600	CASE EGG		1
75	3019008600	POCKET BOTTLE A		1
76	3019013600	POCKET R DOOR WITHOUT ROD		1
77	DMS1467360	COVER DOOR CAP *L BAR HANDLE (NOBLE GREY)	NOBLE GREY	1
78	DMS1467460	COVER DOOR CAP *R BAR HANDLE (NOBLE GREY)	NOBLE GREY	1
79	3013597500	EMBLEM DAEWOO '04 (TRANSPARENT)		1
*80	DMS0086250	(1) R DOOR HIDDEN (N/G INOX '04) 387NI	N/G INOX '04	1
	DMS0086080	(2) R DOOR HIDDEN (N/G INOX) 387NI	N/G INOX	1
	DMS0086120	(3) R DOOR HIDDEN (N/G INOX '07) 387NI	S 06 INOX 07	1
81	3012306600	GASKET R DR 36./38. WHITE		1
82	DMS0967410	CAP DOOR BUSHING (DARK GRAY)	DARK GREY	1
*83	DMS0086240	(1) F DOOR HIDDEN (N/G INOX '04) 38, 41	N/G INOX '04	1
	DMS0086070	(2) F DOOR HIDDEN (N/G INOX) 38, 41	N/G INOX	1
	DMS0086110	(3) F DOOR HIDDEN (N/G INOX '07) 38, 41	S 06 INOX 07	1
84	3012306700	GASKET F DR 38./41. WHITE		1
85	DMS0A00100	COMPRESSOR C-BE 140L5Z (SANYO)		1