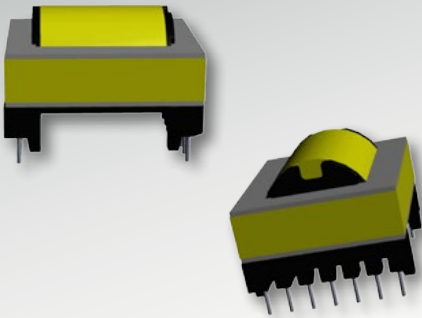


# ERL35

## 14-Pin, THT, Horizontal



### Characteristics

- Through-hole
- Core direction: horizontal
- Functional & reinforced insulation

### Applications

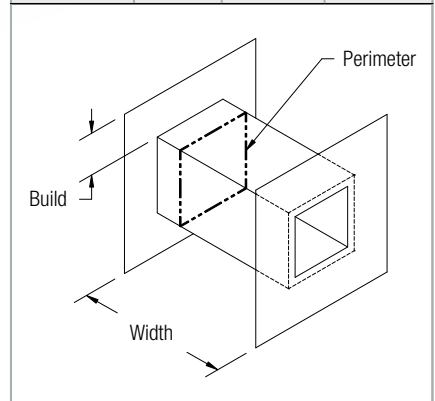
- Offline
- Lighting
- DC/DC converter
- Industrial controls
- White goods
- Telecom
- PFC
- Charging
- Stand-by power

### Core Data

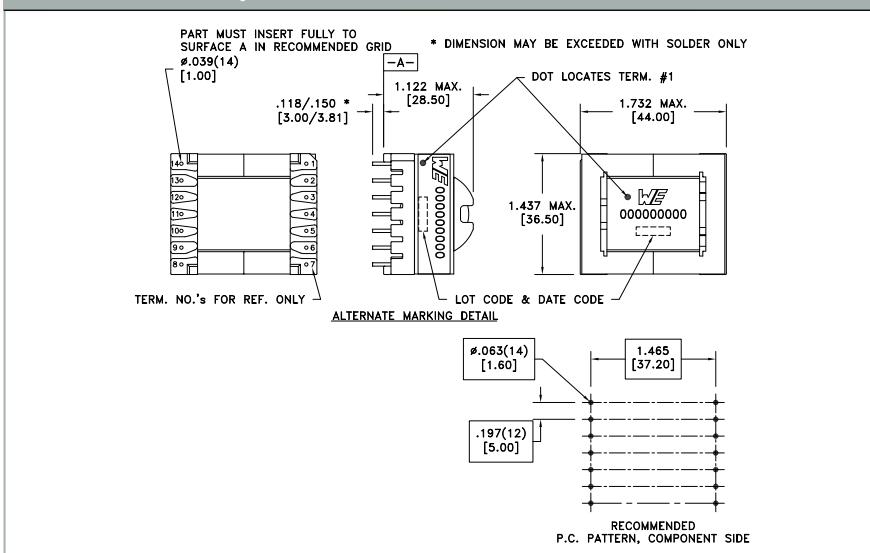
Core Part Number	Area ( $A_c$ ) (mm <sup>2</sup> )	Path Length ( $L_p$ ) (mm)	Volume ( $V_c$ ) (mm <sup>3</sup> )
150-2171	103.00	92.70	9548.10

### Bobbin Winding Area

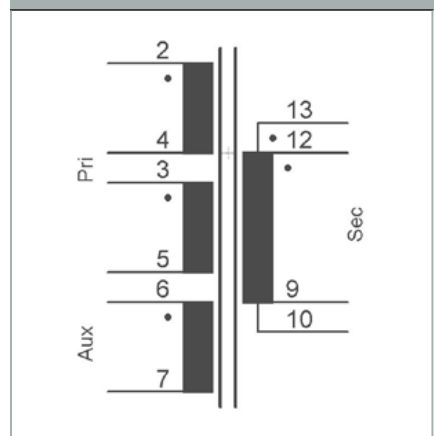
Bobbin Part Number	Width (mm)	Build (mm)	Perimeter (mm)
070-5783	27.61	5.69	42.70



### Dimensions & Footprint



### Recommended Pinout



### Power Level

