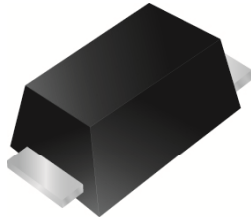
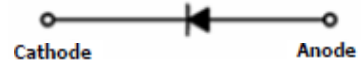




Very Small Outline Flat Lead Plastic Package
Schottky Barrier Diode



SOD-523

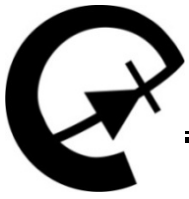


Features
<ul style="list-style-type: none"> • Low Forward Voltage Drop • Flat Lead SOD-523 Small Outline Plastic Package • Extremely Small SOD-523 Package • Surface Device Type Mounting • RoHS Compliant • Green EMC • Matte Tin(Sn) Lead Finish • Band Indicates Cathode • Marking : B

Ordering Information		
Part No.	Package	Packing
ERS520S-30	SOD-523	3000/ Tape & Reel

Maximum Ratings (T _A =25°C unless otherwise noted)			
Parameter	Symbol	Limit	Unit
Power Dissipation	P _D	200	mW
Storage Temperature Range	T _{STG}	-55~+125	°C
Operating Junction Temperature	T _J	+125	°C
Reverse Voltage	V _R	30	V
Average Forward Current	I _{F(AV)}	200	mW
Peak Forward Surge Current (At 8.3ms single half sine-wave)	I _{FSM}	1	A

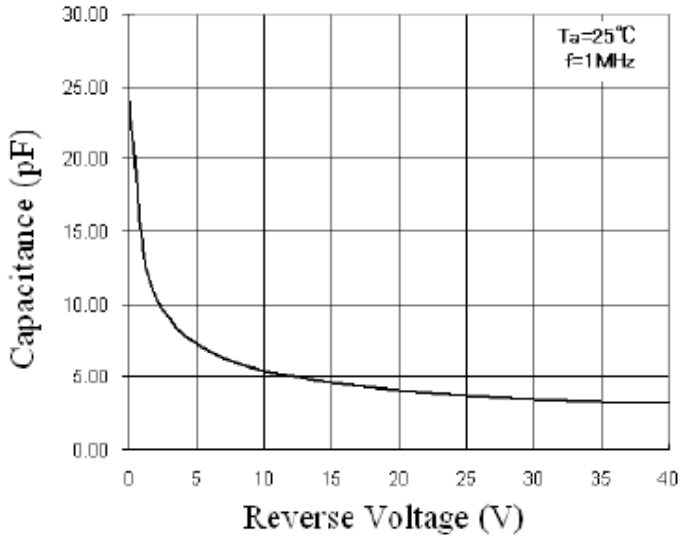
Electrical Characteristics (T _A =25°C unless otherwise noted)						
Parameter	Symbol	Conditions	Min.	Typ.	Max.	Unit
Breakdown Voltage	B _V	I _R =500uA	30	-	-	V
Reverse Leakage Current	I _R	V _R =10V	-	-	1	uA
Forward Voltage	V _F	I _F =200mA	-	-	0.6	V



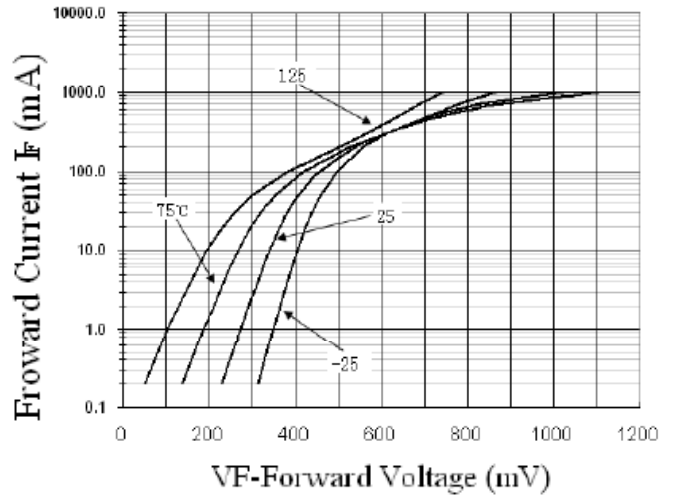
Very Small Outline Flat Lead Plastic Package Schottky Barrier Diode

Typical Characteristics

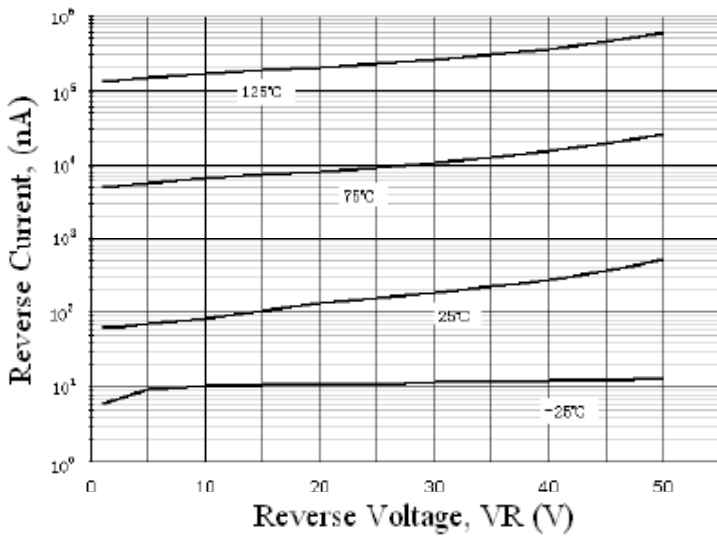
Total Capacitance



Forward Voltage vs Ambient Temperature



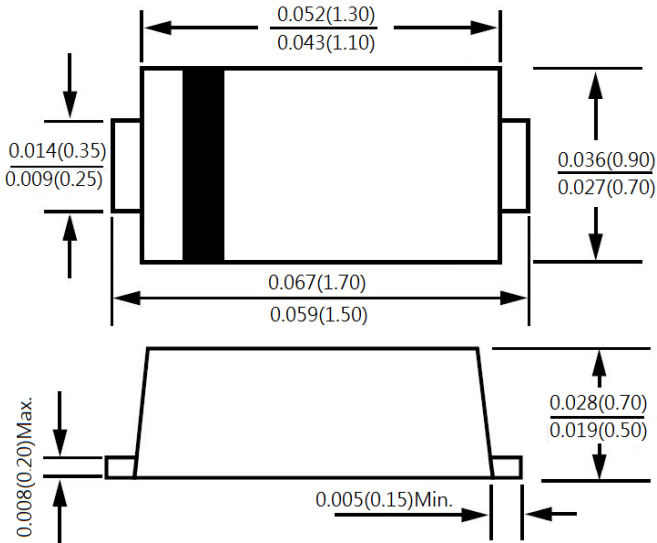
Reverse Current vs Reverse Voltage





Very Small Outline Flat Lead Plastic Package
Schottky Barrier Diode

Package Outline Dimensions



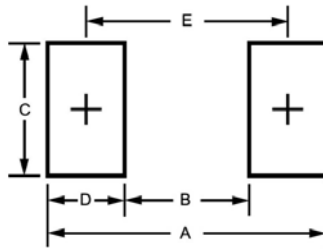
T007-Ver.1

SOD-523

Dimensions in inches and (millimeters)

Suggested Pad Layout

Outline Symbol	SOD-523 millimeters
A	-
B	-
C	0.50
D	0.80
E	2.00



Tape & Reel Specification

Item	Symbol	Dimension
		millimeters
Carrier width	A	0.9 ±0.05
Carrier length	B	1.95 ±0.05
Carrier depth	C	0.73 ±0.05
Sprocket hole	d	1.55 ±0.05
Reel outside diameter	D	178 ±2
Reel inner diameter	D1	54.4 ±1
Feed hole width	D2	13.0 ±0.2
Sprocket hole position	E	1.75 ±0.1
Punch hole position	F	3.50 ±0.05
Punch hole pitch	P	2.0 ±0.05
Sprocket hole pitch	P0	4.0 ±0.1
Embossment center	P1	2.0 ±0.05
Tape width	W	8.1 ±0.2
Reel width	W1	9.4 ±1.5

