



ES 1500

MEDIUM WAVE OSCILLATOR

RATING.

Filament Voltage	15.5
Filament Current (Amps)	24
Maximum Anode Voltage	7,500
Maximum Anode Dissipation (Watts)	1,500
Amplification Factor	45
Mutual Conductance (mA/V)	2.25
Impedance (ohms)	20,000

DIMENSIONS.

Maximum Overall Length	565 mm.
Maximum Diameter	185 mm.

BASING.

Top Connexion	Anode
Bottom Connexion	Filament and Grid

GENERAL.

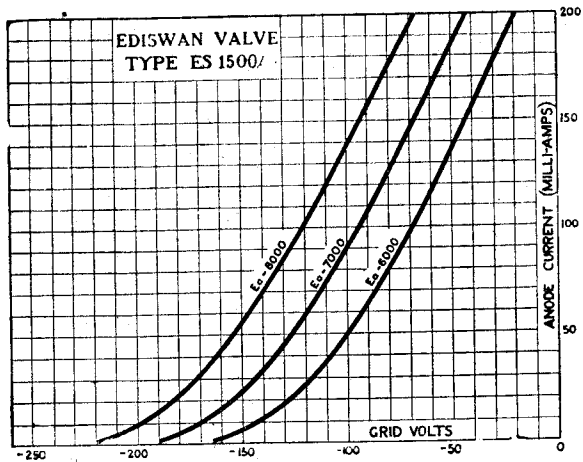
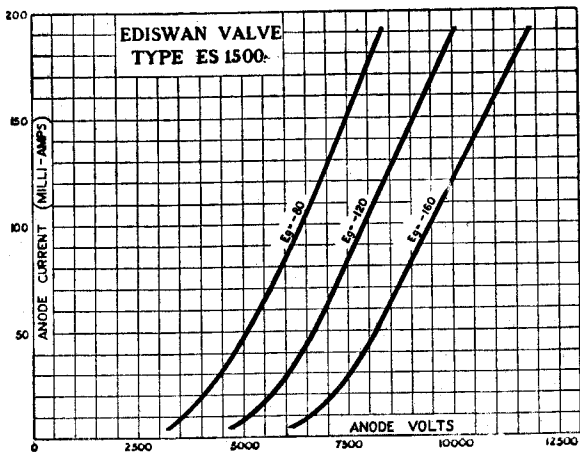
The ES 1500 is a high power medium wave oscillator designed for working at frequencies up to 1.0 Mc/sec.

The valve is air-cooled, and is intended for operation in a well-ventilated position.

It is suitable for use in high-frequency oscillators for eddy current heating.

The maximum current capacity of the seals is 5.0 amps H.

EDISWAN



THE EDISON SWAN
ELECTRIC CO., LTD.



155, CHARING CROSS RD.
LONDON, W. C. 2.

EDISWAN RADIO