

HIGH VOLTAGE DC RELAY

EVR-100



▶ 코일정격 (Magnet coil ratings)

Nominal voltage(V)	Item	Nominal Coil current (mA)	Coil resistance (Ω)	Pick-up voltage (V)max.	Drop-out voltage (V)min.	Max. voltage (V)max.	Coil power(W) dissipation
DC	110	52	2,100	75%	10%	130%	5.6 ~ 5.9
	72	83	870				
	60	95	630				
	48	117	410				
	36	156	230				
	24	245	110				
	12	480	25				
	6	952	6.3				

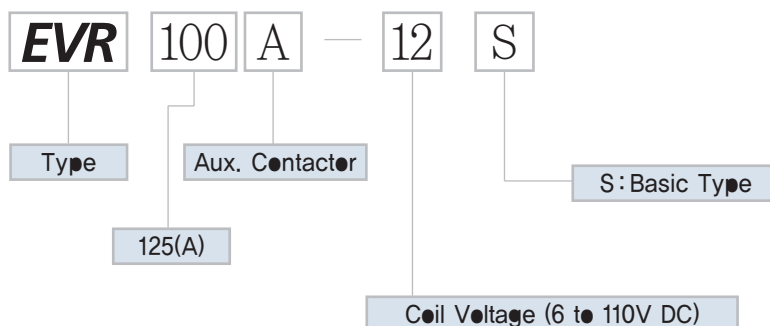
- Notes : 1. Nominal current and coil resistance are measured at +20°C.
 2. Differences of coil resistance are ±10%.
 3. Performance characteristic coil temperature is measured at +20°C.

▶ 접점정격 (Contact ratings)

(450VDC기준)

Item	Type	1Pole Resistive load (L/R≤1ms)
		EVR 100
Max. Continuous current (wire size 50mm ²)		150A
Max. switching current		125A
Max. switching capacity		1200VDC 20A
Contact rating switching voltages		450VDC
Voltage drop across contacts per 100A		30mV max.
Min. permissible load		12V DC 0.5A
Description		S,P On/Off (a)
Contact Arrangement, auxiliary contacts		1Form A (SPST-NO.)
Aux. Contact Current, Max.		2A 30VDC / 3A 125VAC
Aux. Contact Current, Min.		100mA 8VDC

▶ 주문방법 (Ordering information)



HIGH VOLTAGE DC RELAY

EVR-100



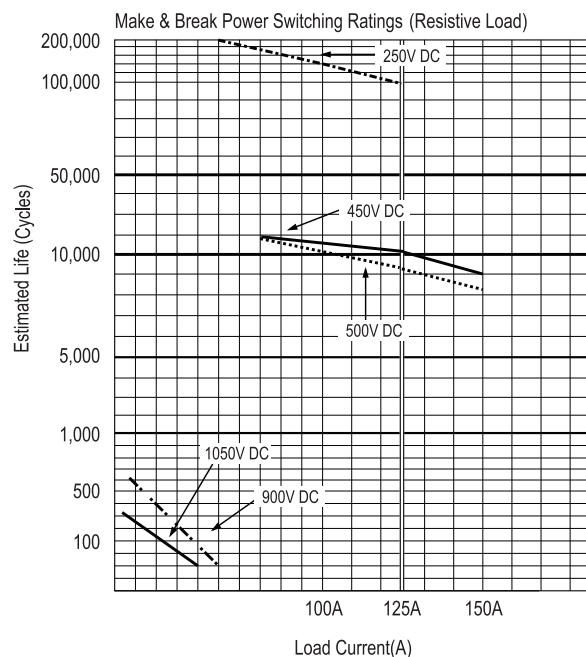
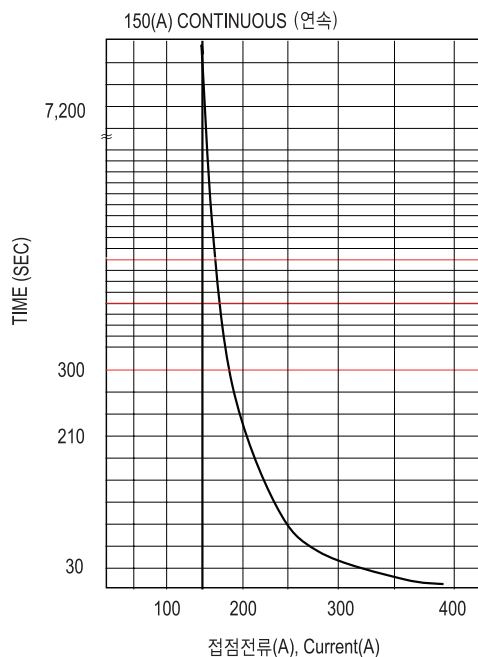
EVR100
EVR100A

▶ 성능 (Characteristics)

Initial insulation resistance		Min. 100M Ω 500V DC
Expected life	Mechanical (Min.)	10 ⁶
	Electric (L/R \leq 1ms)	450V DC 125A
		250V DC 125A
Initial breakdown voltage	Between open contacts	3500V AC 1Min. 10mA
	Between contacts & coil	3500V AC 1Min. 10mA
Operate time (at 20 $^{\circ}$ C)		Max. 20ms
Release time (at 20 $^{\circ}$ C)		Max. 5ms
Shock resistance	Functional	Min 490 % $\{$ 50G $\}$
	Destructive	Min 147 % $\{$ 15G $\}$
Vibration resistance	Functional	100 % $\{$ 10G $\}$ 10 to 500Hz
	Destructive	100 % $\{$ 10G $\}$ 10 to 500Hz
Conditions for operation transport and storage	Ambient temperature	-40 $^{\circ}$ C to +85 $^{\circ}$ C
	Humidity	5 to 85% R.H.
Unit weight		300g

▶ 특성곡선 (Reference data)

- 온도상승곡선
- 통전시간의 최대치 Max, Current capacity
Max, Continuous thermal current rating (amperes)

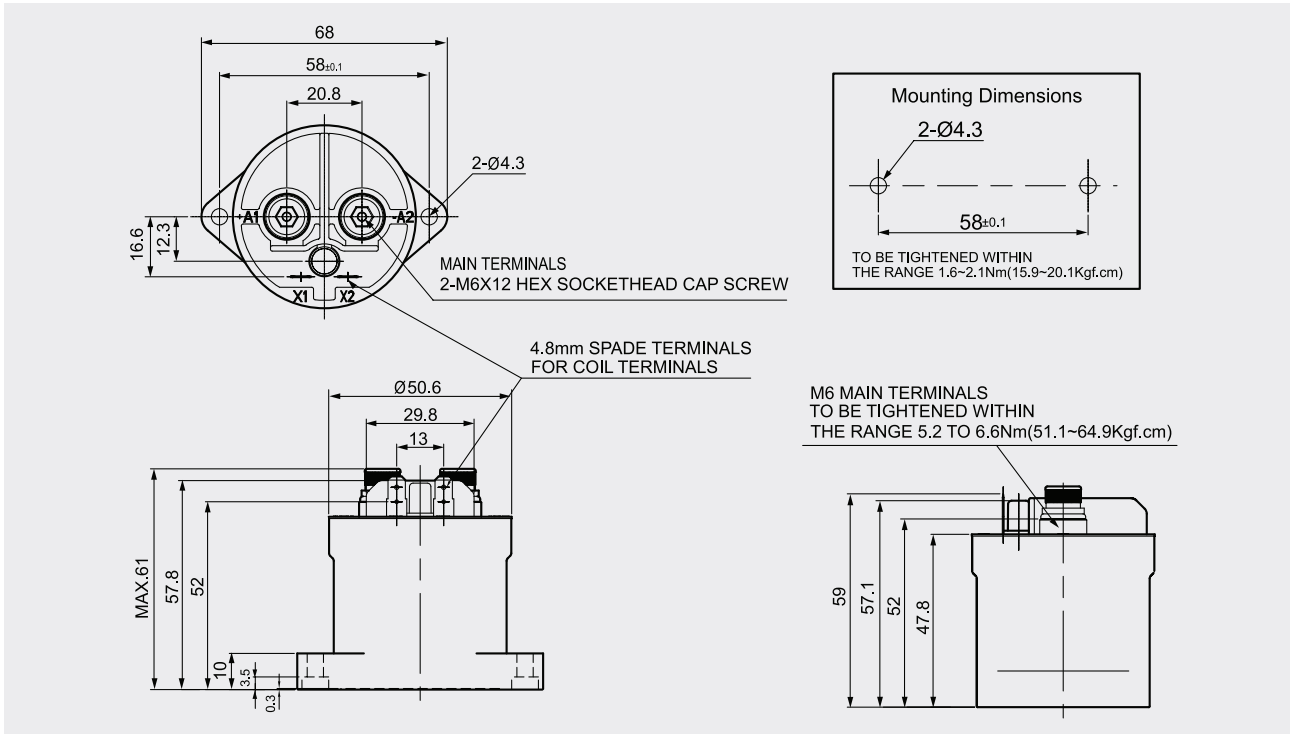


HIGH VOLTAGE DC RELAY

EVR-100



▶ 외형치수도 (Dimension in mm)



(Aux. Type)

