

# EW-462, EW-562

## UNIPOLAR HALL EFFECT SWITCHES

### ASAHI HALL EFFECT ICs

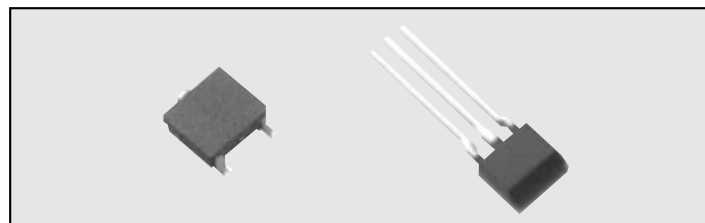
ASAHI KASEI ELECTRONICS Hall Effect ICs are composed of a Ultra-high sensitive InSb Hall element and a signal processing IC chip in a package. ASAHI KASEI ELECTRONICS Hall Effect ICs have high sensitivity and good stability.

### FEATURES

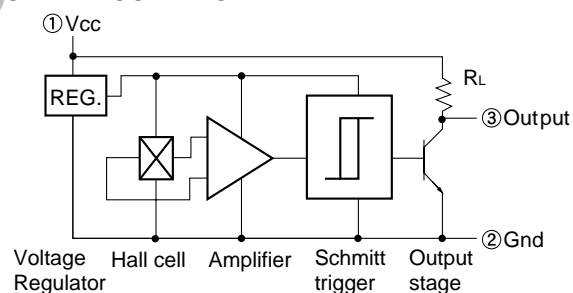
- Bop(max): 6mT
- High Sensitivity
- 4.5V to 18V Operation
- Highly Resistant to Mechanical Stress
- Stable Operation in Broad Temperature Range
- Compact Size
- With Load Resistance

### APPLICATIONS

- Rotor Position Sensor for Precision Motors.
- Stroke Sensor
- Proximity Switch
- Encoder
- Current Switch                    etc.



### FUNCTIONAL BLOCK DIAGRAM

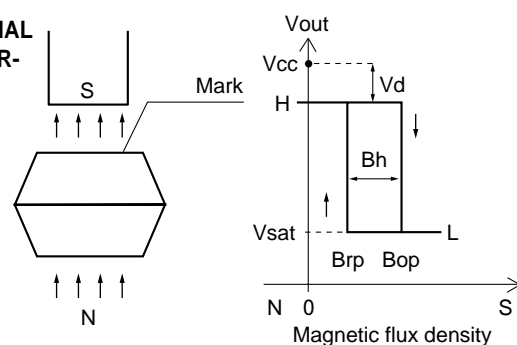


### ABSOLUTE MAXIMUM RATINGS(Ta = 25 )

Item	Symbol	Limit	Unit
Supply Voltage * 1	Vcc	18	V
Output "OFF" Voltage	Vo(off)	18	V
Output "ON" Current	I sink	15	mA
Operating Temperature Range	Topr	- 30 ~ + 115	
Storage Temperature Range	Tstg	- 40 ~ + 125	

\* 1:Please refer to(Fig.1) DERATING CURVE "

### OPERATIONAL CHARACTERISTICS



### ELECTRICAL CHARACTERISTICS(Ta = 25 , Vcc = 4.5 ~ 18V DC.)

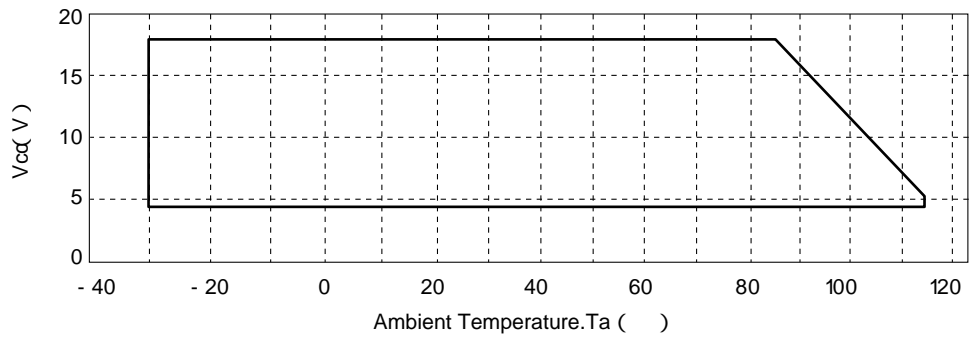
Item	Symbol	Conditions	Min.	Typ.	Max.	Unit
Operate Point	Bop	Vcc=12V			6	mT
Release Point	Brp	Vcc=12V	0.5			mT
Hysteresis	Bh		0.2			mT
Output Saturation Voltage	Vsat	Output"L", Vcc=12V			0.4	V
Supply Current	I cc	Output"H", Vcc=12V			8	mA
Internal Load Resistance	RL		7		13	K
Output Down Voltage	Vd				20	mV

1mT = 10Gauss

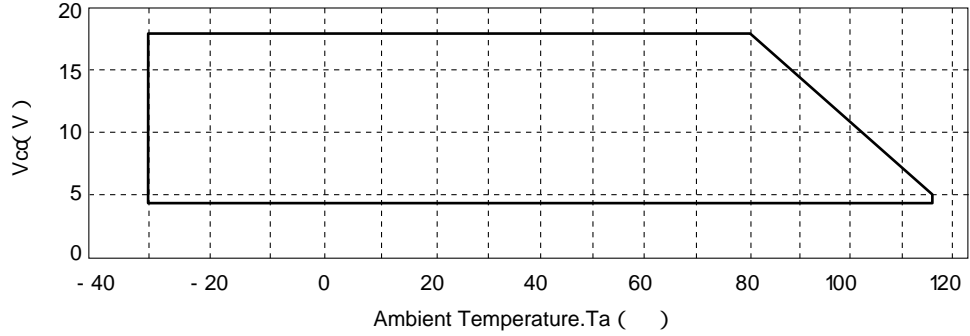
**SUPPLY VOLTAGE DERATING CURVE**

(Fig. 1)

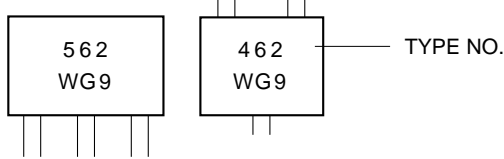
**EW-562**



**EW-462**

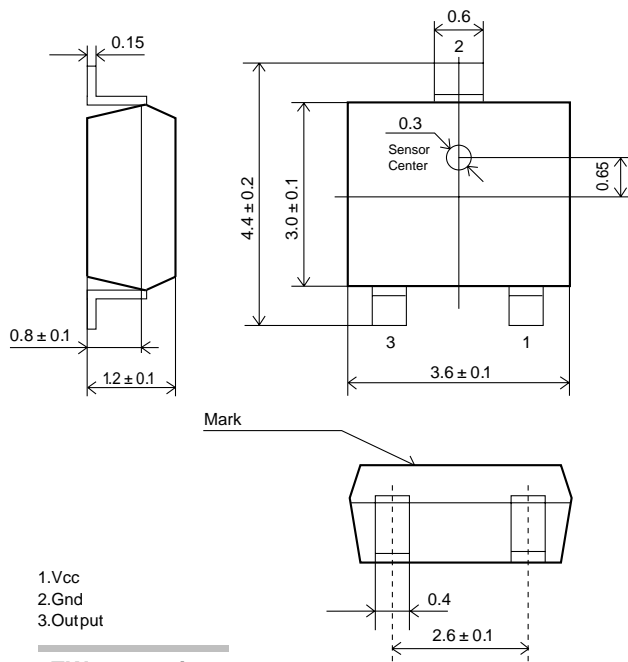


**MARK AND SUPPLY STYLE**



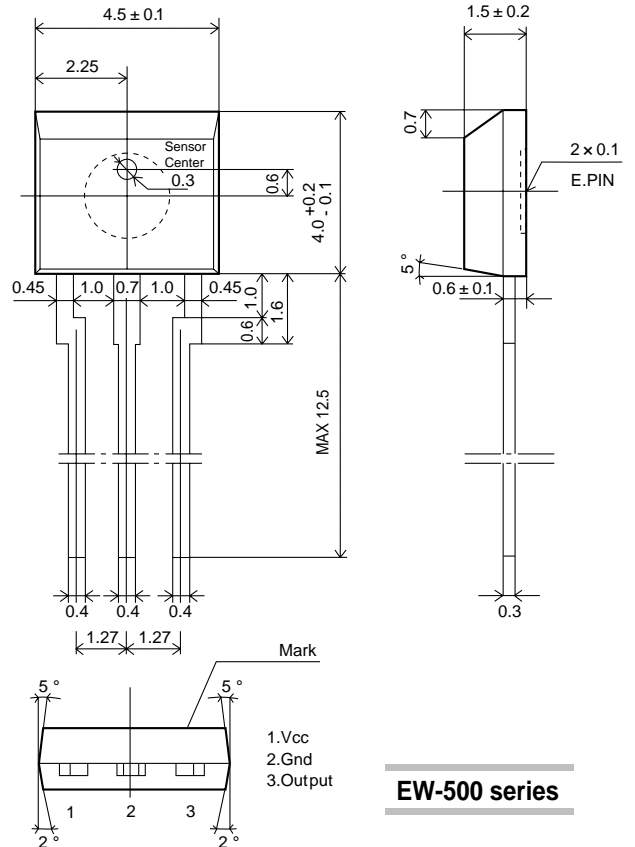
Supplied by  
EW-562:500pcs. / Pack.  
EW-462:5000pcs. / Reel

**PACKAGE** [Unit : mm]



- 1.Vcc
- 2.Gnd
- 3.Output

**EW-400 series**



- 1.Vcc
- 2.Gnd
- 3.Output

**EW-500 series**