

F045LSL

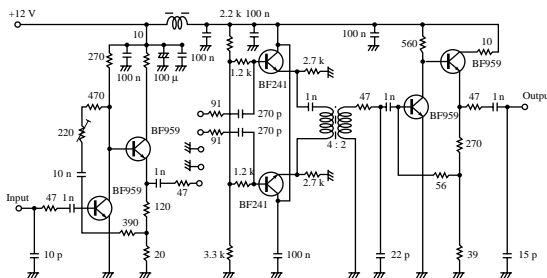
- APPLICATIONTV-IF FILTER
- SYSTEMI
- CARRIER FREQUENCY 39.5 MHz
- LiNbO₃ (Lithium tantalum)

ELECTRICAL CHARACTERISTICS

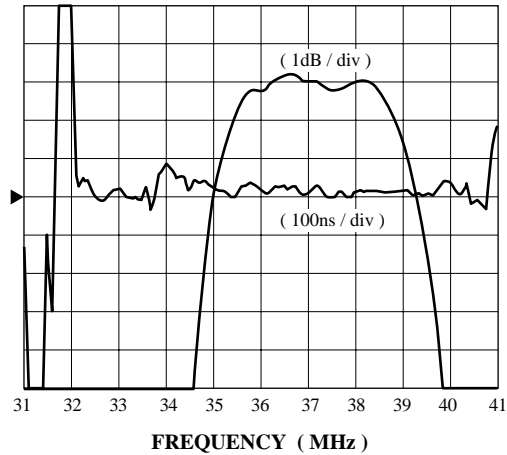
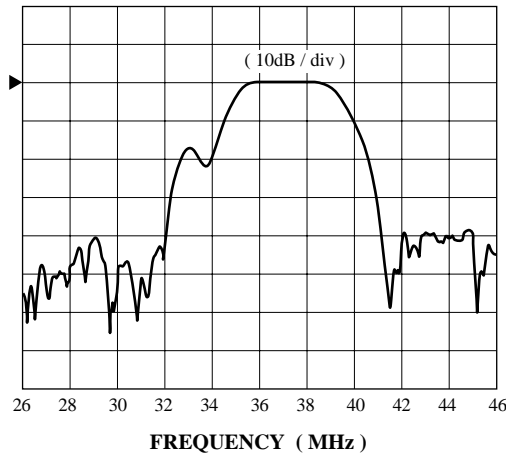
Parameters	Conditions	Min.	Typical	Max.	Unit
Insertion Loss	fp-1.5 (38.0 MHz)	-	17.1	-	dB
Relative level**	fp-8 (31.5 MHz)	-	-	-38	dB
	fp-6 (33.5 MHz)	-23.5	-22.0	-20.5	dB
	fp-4.43 (35.07 MHz)	-3.3	-2.3	-1.3	dB
	fp-1.5 (38.0 MHz)	-	0	-	dB
	fp (39.5 MHz)	-6.0	-5.0	-4.0	dB
Outband Rejection	25.0 to 31.5 MHz	-	-	-32	dB
	41.5 to 45.0 MHz	-	-	-30	dB
Amplitude ripple within pass band (p-p)		-	0.2	0.7	dB
Group Delay**	fp-4.43 (35.07 MHz)	-	15	-	ns
	fp-2 (37.5 MHz)	-	0	-	ns
	fp (39.5 MHz)	-	0	-	ns
Ripple (p-p)	37.47 to 38.9 MHz	-	30	70	ns
Temperature Coefficient of Frequency Response		-	-72	-	ppm/°C
Input impedance***	Ri (37.4 MHz)	-	-	-	kΩ
	Ci (1 MHz)	-	9.4	-	pF
Output impedance***	Ro (37.4 MHz)	-	-	-	kΩ
	Co (1 MHz)	-	2.4	-	pF

- * The reference is fp-1.5 level.
- ** Relative value to fp point.
- *** Impedance equivalent circuits is shown on the right hand side.

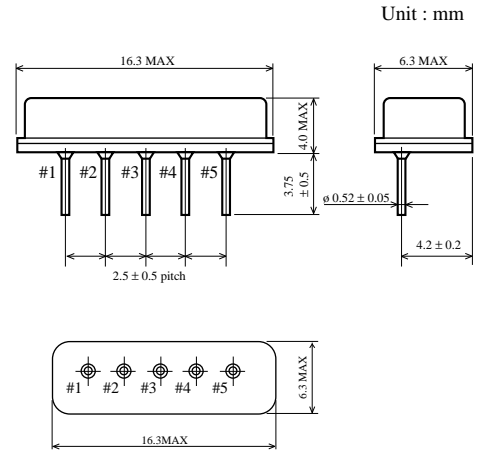
MEASUREMENT CIRCUIT



FREQUENCY CHARACTERISTICS



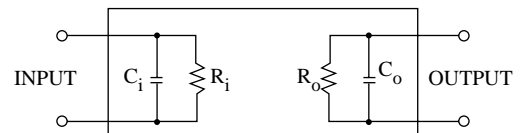
PACKAGE DIMENSION



PIN CONNECTIONS

- Pin No.
- #1. INPUT
 - #2. INPUT
 - #3. GROUND
 - #4. OUTPUT
 - #5. OUTPUT

EQUIVALENT CIRCUIT



- * The information contained herein is presented only as a guide for the applications of our products. No responsibility is assumed by TOSHIBA for any infringements of patents or other rights of the third parties which may result from its use. No license is granted by implication or otherwise under any patent or patent rights of TOSHIBA or others.
- * The information contained herein may be changed without prior notice. It is therefore advisable to contact TOSHIBA before proceeding with the design of equipment incorporating this product.