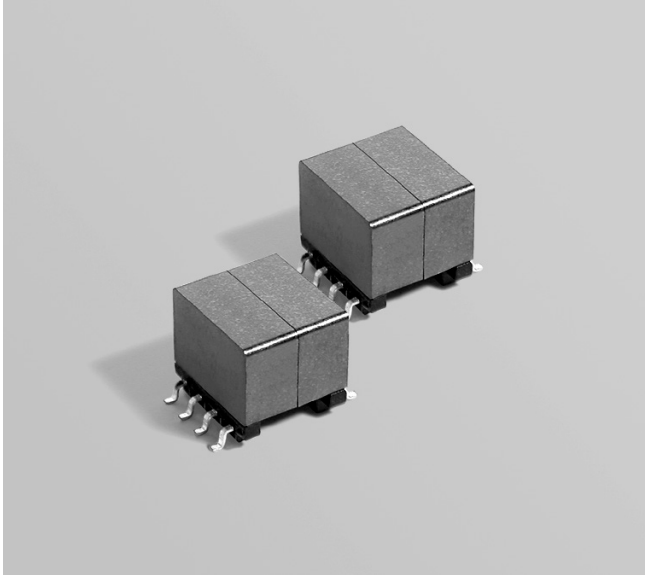


# Flyback Transformers

For Silicon Laboratories  
Si3402 PD Controller



- Designed for Power over Ethernet PD controllers for applications up to 10 Watts.
- Operates in continuous conduction mode with 36 – 72 V input
- 1500 Vrms, one minute isolation between primary and secondary

**Core material** Ferrite

**Terminations** RoHS tin-silver over tin over nickel over phos bronze. Other terminations available at additional cost.

**Weight** 3.8 – 3.9 g

**Ambient temperature** –40°C to +85°C

**Storage temperature** Component: –40°C to +85°C.

Tape and reel packaging: –40°C to +80°C

**Maximum part temperature** +125°C (ambient + temp rise)

**Resistance to soldering heat** Max three 40 second reflows at +260°C, parts cooled to room temperature between cycles

**Moisture Sensitivity Level (MSL)** 1 (unlimited floor life at <30°C / 85% relative humidity)

**Failures in Time (FIT) / Mean Time Between Failures (MTBF)**

38 per billion hours / 26,315,789 hours, calculated per Telcordia SR-332

**Packaging** 200 per 13" reel Plastic tape: 32 mm wide, 0.5 mm thick, 24 mm pocket spacing, 11.2 mm pocket depth

**PCB washing** Tested to MIL-STD-202 Method 215 plus an additional aqueous wash. See [Doc787\\_PCB\\_Washing.pdf](#).

Part number <sup>1</sup>	Power (W)	Inductance at 0 A <sup>2</sup> ±10% (µH)	Inductance at I <sub>pk</sub> <sup>3</sup> min (µH)	DCR max (Ohms) <sup>4</sup>		Leakage inductance max (µH) <sup>5</sup>	Turns ratio <sup>6</sup> pri : sec	I <sub>pk</sub> <sup>3</sup> (A)	Output
				pri	sec				
FA2671-AL_	10	40.0	36.0	0.098	0.023	0.395	1 : 0.3	1.3	3.3 V, 3.0 A
FA2672-AL_	10	40.0	36.0	0.098	0.045	0.340	1 : 0.4	1.3	5.0 V, 2.0 A
FA2732-AL_	10	40.0	36.0	0.098	0.156	0.370	1 : 1	1.3	12.0 V, 0.83 A

1. When ordering, please specify **packaging** code:

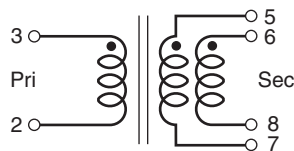
**FA2672-ALD**

**Packaging:** D = 13" machine-ready reel. EIA-481 embossed plastic tape (200 parts per full reel).

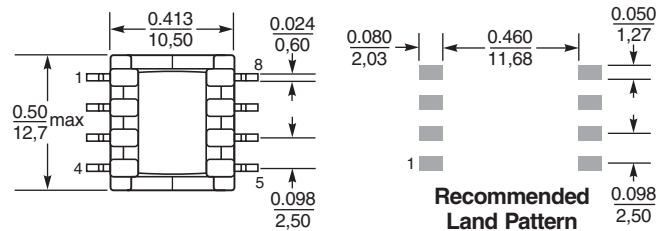
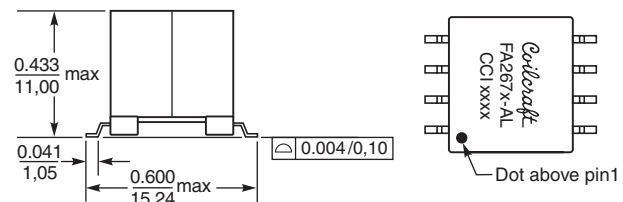
B = Less than full reel. In tape, but not machine ready. To have a leader and trailer added (\$25 charge), use code letter D instead.

- Inductance is for the primary, measured at 400 kHz, 0.4 Vrms, 0 Adc.
- I<sub>pk</sub> is peak primary current drawn at minimum input voltage.
- DCR for the secondary is per winding.
- Leakage inductance measured between pins 2 and 3 with all secondary pins shorted.
- Turns ratio is with the secondary windings connected in parallel.
- Output is with the secondary windings connected in parallel.
- Electrical specifications at 25°C.

Refer to Doc 362 "Soldering Surface Mount Components" before soldering.



Secondary windings to be connected in parallel on PCB board



Dimensions are in  $\frac{\text{inches}}{\text{mm}}$