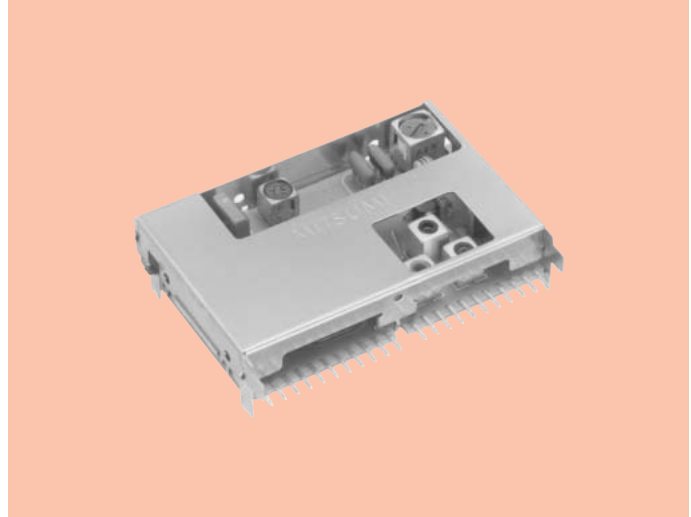


# Compact, AM/FM Automotive Electronic Tuner FAE397-A11/P01/J01

AM/FM Electronic Tuners

## FEATURES

1. Car AM/FM all-in-one electronic tuner with built-in PLL.
2. Self adjustment and setting by I2C, F.E+IF+NC+MPX composition.
3. LW~MW receiving without band switching circuit, due to the AM double conversion method.
4. With IF selectivity switching function. Improved reception performance relative to adjacent station interference.
5. Good radiation due to built-in PLL.
6. It is possible to use it also for the set with RDS (Europe) function.
7. Ideal for mid-and high quality car stereo systems.
8. Supports various bands (normal overseas, North American, European).
9. Equipped with EERROM.

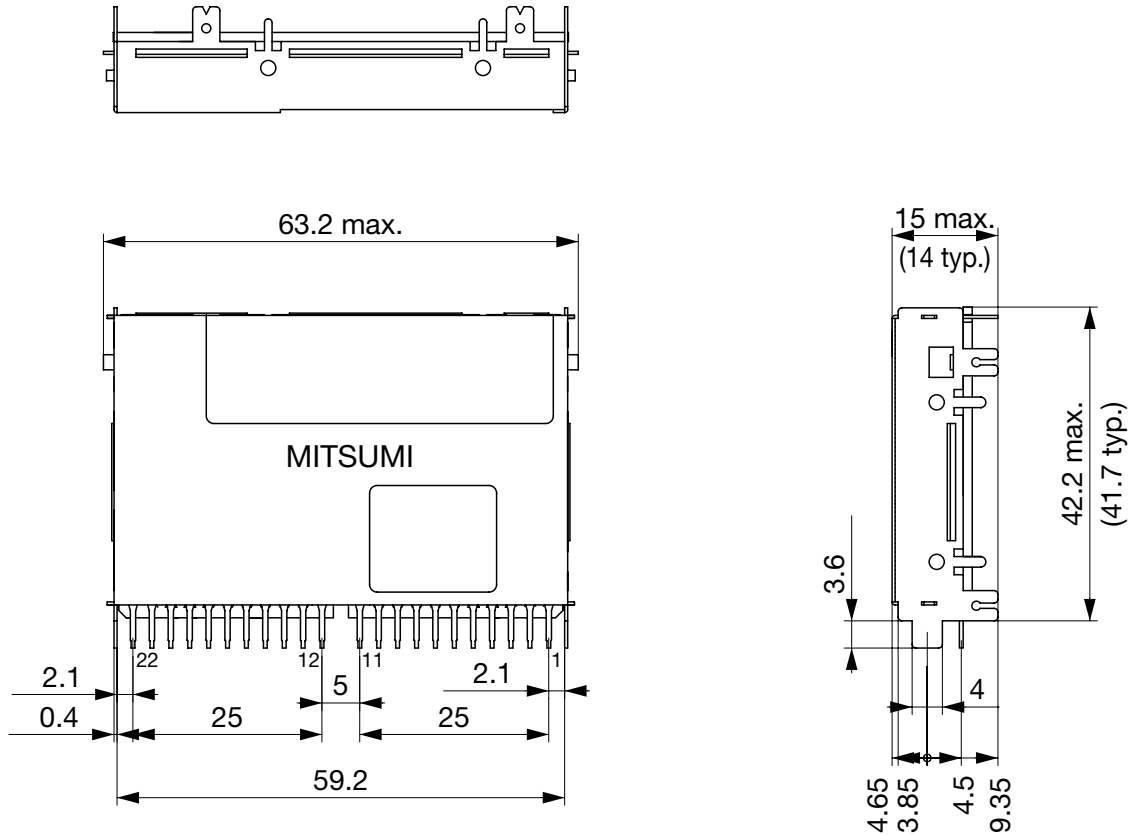


## SPECIFICATIONS

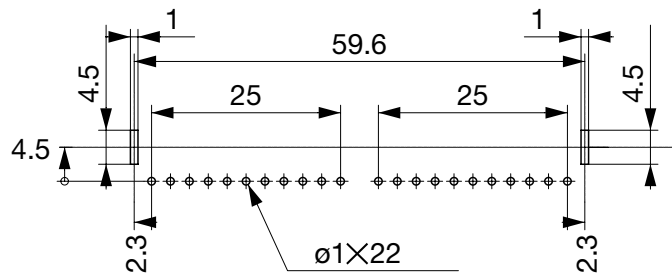
Item		FAE397-A11/P01/J01	FAE397-A11/P01/J01	FAE397-A11/P01
		FM	MW	LW
Supply Voltage	VCC	8.5 ± 0.5V	8.5 ± 0.5V	8.5 ± 0.5V
	VDD	5.0 ± 0.5V	5.0 ± 0.5V	5.0 ± 0.5V
Current Consumption		165mA max.	165mA max.	165mA max.
Tuning Range		A11 : 87.5~108MHz P01 : 65~108MHz J01 : 76.0~90MHz	A11/P01 : 522~1710kHz J01 : 522~1629kHz	A11/P01 : 144~279kHz J01: ——
Input Impedance		75Ω unbalanced	——	——
Center IF		1st IF=10.7MHz 2nd IF=450kHz	1st IF=10.7MHz 2nd IF=450kHz	1st IF=10.7MHz 2nd IF=450kHz
Usable Sensitivity		10dBμ max. (5.0dBμ typ.) ☆S/N 30dB	33dBμ max. (28dBμ typ.) ☆S/N 20dB	37dBμ max. (32dBμ typ.) ☆S/N 20dB
Image Rejection		55dB min.	55dB min.	55dB min.
IF Rejection		70dB min.	50dB min.	50dB min.
S/N Ratio		54dB min. (mono) (1kHz, 22.5kHz dev.)	45dB min. (400Hz, 30% mod.)	45dB min. (400Hz, 30% mod.)
Output Level		185mV/rms typ. (1kHz, 22.5kHz dev.)	230mV/rms typ. (400Hz, 30% mod.)	230mV/rms typ. (400Hz, 30% mod.)
Separation		25dB min. (Input 60dB, 40kHz dev.+Pilot 10%)	——	——

\*Note Specifications subject to change without notice.

**DIMENSIONS**



EXTERNAL TERMINALS	
1. AM ANT	12. S-STOP
2. GND	13. SDA
3. FM ANT	14. SCL
4. GND	15. Vcc (5V)
5. N.C	16. Vcc (8.5V)
6. N.C	17. Rch
7. N.C	18. Lch
8. Vcc (8.5V)	19. Quality out
9. FSV (Vsm)	20. AFS
10. AM ST/MP	21. MPX out
11. GND	22. GND



TERMINAL HOLE LAYOUT  
(DIP SIDE)  
\*REFERENCE ONLY

Unit: mm  
General Tolerance:  $\pm 0.2$