

FE

www.DataSheet4U.com

General Purpose

Chassis mounting single stage filter.
 General purpose.
 Good attenuation in a wide frequency range.
 Low leakage current.

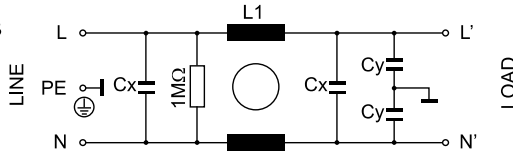
General Specifications

Maximum operating voltage: 250Vac.
 Operating frequency: DC - 60Hz.
 Hipot test voltage:
 L/N->PE: 1800Vac 2s.
 L->N: 1700 Vdc 2s.
 Application class:
 HPF Acc. TO DIN 40040 (-25°C/+85°C/95% RH, 30d).
 Flammability class: UL 94 V2.



RFI Power Line Filters

Electrical schematics

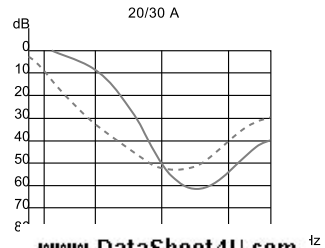
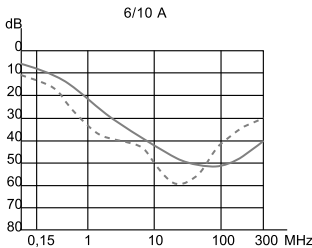
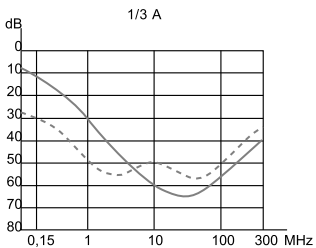


Product List

TYPE	I	L1	CX	C Y	HOUSING	L.CURRENT	CONNECTION	WEIGHT ±g
FE-1X	1 Amp	3 mH	100 nF	4,7 nF	211	0,45mA	AWG18 wire	133
FE-1Z					210		FASTON 6,3mm	119
FE-3X	3 Amp	2 mH	100 nF	4,7 nF	211	0,45mA	AWG18 wire	114
FE-3Z					210		FASTON 6,3mm	108
FE-6X	6 Amp	0,75 mH	100 nF	4,7 nF	211	0,45mA	AWG18 wire	115
FE-6Z					210		FASTON 6,3mm	109
FE-10X	10 Amp	1 mH	100 nF	4,7 nF	211	0,45mA	AWG18 wire	136
FE-10Z					210		FASTON 6,3mm	130
FE-20W	20 Amp	0,48 mH	100 nF	4,7 nF	223	0,45mA	M6 SCREW	561
FE-20Z					216		FASTON 6,3mm	429
FE-30W	30 Amp	0,48 mH	100 nF	4,7 nF	223	0,45mA	M6 SCREW	647

Insertion Loss

----- ASYM
 ——— SYM



www.DataSheet4U.com