

**Type: FEM-10, FEM-10C**

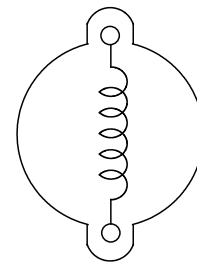
**Product Description**

- 10.0 × 6.5mm Max.(L × W), 12.5mm Max. Height.
- Inductance:0.05 ~ 0.23 μ H .
- Operating frequency:200MHz
- In addition to the standard versions of parameters shown here, custom designs are available to meet your exact requirements.

**Feature**

- Variable unshielded type.
- Ideally used in FM Radio ,TV. Transceiver
- RoHS Compliance

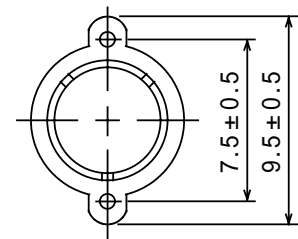
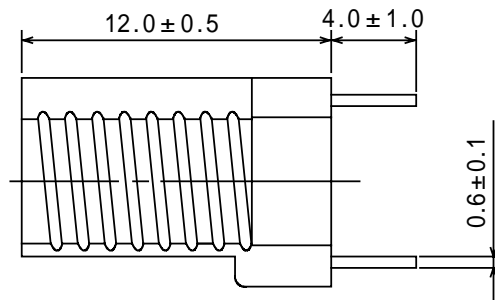
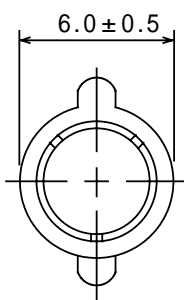
**Connection (Bottom View)**



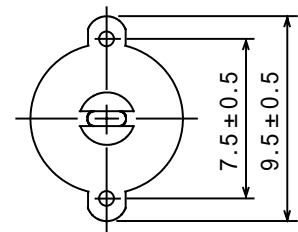
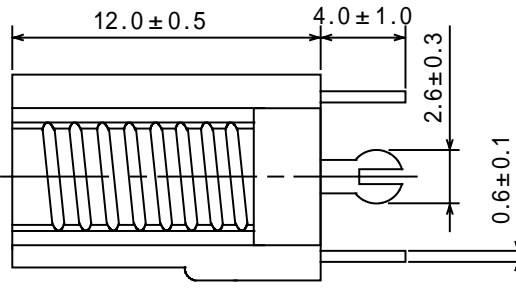
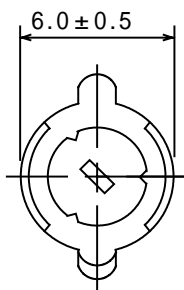
**Dimensions (mm)**



**FEM-10**



**FEM-10C**



- \* Dimension does not include solder used on coil.
- \* Pin pitch should be measured at the root of terminal.

**Type: FEM-10, FEM-10C**
**Specification (FEM-10)**

Part No.	Color	Turns	Tuning capacitance	Unloaded Q (Min.)	Measuring frequency
FEM1ØNP-1N6	Natural	1½T	75pF ± 10% Within	80	100MHz
FEM1ØNP-1F6			63pF ± 5% Variable	90	
FEM1ØNP-2N6	Red	2½T	77pF ± 10% Within	105	80MHz
FEM1ØNP-2F6			61pF ± 5% Variable	115	
FEM1ØNP-3N6	Orange	3½T	58pF ± 10% Within	100	80MHz
FEM1ØNP-3F6			43pF ± 5% Variable	115	
FEM1ØNP-4N6	Yellow	4½T	45pF ± 10% Within	90	80MHz
FEM1ØNP-4F6			30pF ± 5% Variable	110	
FEM1ØNP-5N6	Green	5½T	37pF ± 10% Within	80	80MHz
FEM1ØNP-5F6			23pF ± 5% Variable	105	
FEM1ØNP-6N6	Blue	6½T	31pF ± 10% Within	80	80MHz
FEM1ØNP-6F6			21pF ± 5% Variable	110	
FEM1ØNP-7N6	Natural	7½T	27pF ± 10% Within	80	80MHz
FEM1ØNP-7F6			17pF ± 5% Variable	110	

**Specification (FEM-10C)**

Part No.	Color	Turns	Tuning Capacitance	Unloaded Q (Min.)	Measuring Frequency
FEM1ØCNP-1F6	Natural	1½T	63pF ± 5% variable	90	100MHz
FEM1ØCNP-1N6			75pF ± 10% within	80	
FEM1ØCNP-2F6	Red	2½T	61pF ± 5% variable	115	80MHz
FEM1ØCNP-2N6			77pF ± 10% within	105	
FEM1ØCNP-3F6	Orange	3½T	43pF ± 5% variable	115	80MHz
FEM1ØCNP-3N6			58pF ± 10% within	100	
FEM1ØCNP-4F6	Yellow	4½T	30pF ± 5% variable	110	80MHz
FEM1ØCNP-4N6			45pF ± 10% within	90	
FEM1ØCNP-5F6	Green	5½T	23pF ± 5% variable	105	80MHz
FEM1ØCNP-5N6			37pF ± 10% within	80	
FEM1ØCNP-6F6	Blue	6½T	21pF ± 5% variable	110	80MHz
FEM1ØCNP-6N6			31pF ± 10% within	80	
FEM1ØCNP-7F6	Natural	7½T	17pF ± 5% variable	110	80MHz
FEM1ØCNP-7N6			27pF ± 10% within	80	

Adjustable core, F: Ferrite core N: without core.

Variable range of tuning capacitance allows screw core to have 2mm Max. fly out from the top of coil.

\* VHF Q-METER to be used when measuring.