

1.8° and 0.9° or 0.72° and 0.36° Size 110mm Hybrid Stepping Motor

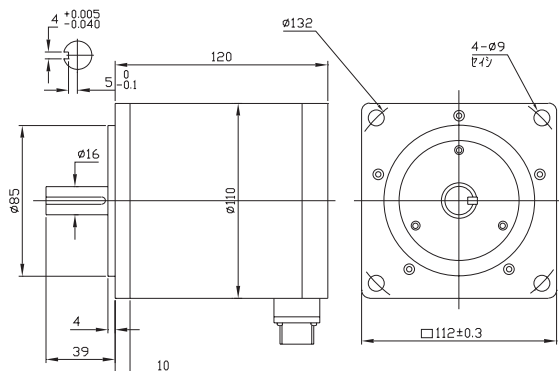
● General Specification for Hybrid Stepping Motor

Item	Specifications
Step Angle	1.8° or 0.9°, 0.72° or 0.36°
Step Angle Accuracy	± 5% (full step, no load)
Resistance Accuracy	± 10%
Inductance Accuracy	± 20%
Temperature Rise	80°C Max.(rated current, 2 phase on)
Ambient Temperature	-20°C~+50°C
Insulation Resistance	100M Ω Min. ,500VDC
Dielectric Strength	500VAC for one minute
Shaft Radial Play	0.02Max. (450 g-load)
Shaft Axial Play	0.08Max. (450 g-load)
Max. radial force	220N (20mm from the flange)
Max. axial force	60N
Rotation	CW(See from Front Flange)

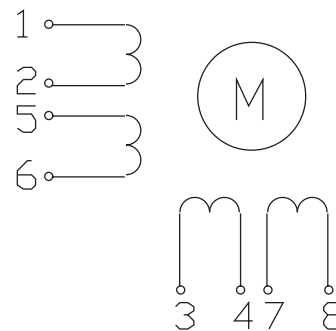
● Size 110mm Hybrid Stepping Motor Specifications

Model	No. of phase	Step angle degree	Rated Voltage V	Current /Phase A	Resistance /Phase Ω	Inductance /Phase mH	Holding Torque Nm	Rotor Inertia kg-cm ²	Weight kg	Detent Torque Nm	Length mm
Single shaft											
FL110ST130-6008A	4	1.8	80-200	6	0.18	2	4.5	3.8	3.8	0.3	130
FL110ST130-6008MA	4	0.9	80-200	6	0.18	2	4.5	3.8	3.8	0.3	130
FL110ST192-6008A	4	1.8	80-200	6	0.22	2.1	7.1	7.5	7.5	0.6	192
FL110ST192-6008MA	4	0.9	80-200	6	0.22	2.1	7.1	7.5	7.5	0.6	192
FL110ST192-50010A	5	0.72	130	5	0.3	1.9	6.8	7.5	7.5	0.6	192
FL110ST192-50010MA	5	0.36	130	5	0.3	1.9	6.8	7.5	7.5	0.6	192
FL110ST192-30010A	5	0.72	130	3	0.5	5.3	6.8	7.5	7.5	0.6	192
FL110ST192-30010MA	5	0.36	130	3	0.5	5.3	6.8	7.5	7.5	0.6	192
FL110ST240-6008A	4	1.8	80-200	6	0.3	3.2	10.3	11.5	11.5	0.9	240
FL110ST240-6008MA	4	0.9	80-200	6	0.3	3.2	10.3	11.5	11.5	0.9	240
FL110ST240-50010A	5	0.72	130	5	0.37	3.4	10.3	11.5	11.5	0.9	240
FL110ST240-50010MA	5	0.36	130	5	0.37	3.4	10.3	11.5	11.5	0.9	240
FL110ST240-30010A	5	0.72	130	3	0.62	9.5	10.3	11.5	11.5	0.9	240
FL110ST240-30010MA	5	0.36	130	3	0.62	9.5	10.3	11.5	11.5	0.9	240

● Dimension



Wiring Diagram

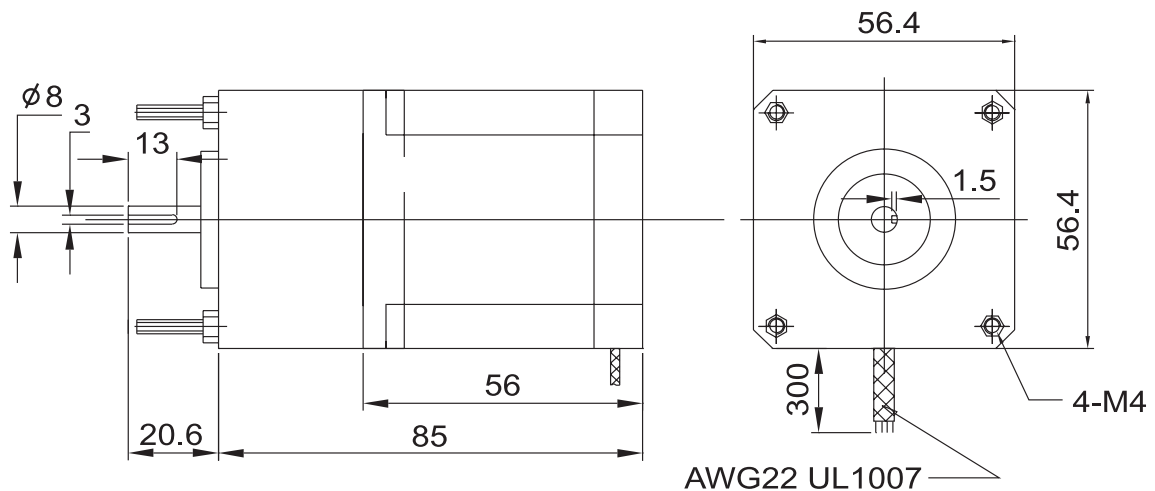


FL57HBGJB Gearbox Stepping Motor

● General Specification

Model	Unit	FL57HBGJB					
		6	10	18	36	50	100
Phase		4					
Manner of distribution		2-2					
Motor's stepping angle	deg	1.8					
Resistance/phase	ohms	80 ± 10%					
Exciting voltage	V	24					
Static torque	N.cm	6.2					
Reduction ratio		6	10	18	36	50	100
Number of gear trains		2	3	4	4	5	5
Efficiency	%	81	72	66	66	59	59
No load starting frequency	pps	380	370	350	350	330	330
No load operating frequency	pps	400	385	360	360	350	350
Load starting frequency	1kg/pps	360	380	400	400	430	430
Max. permissible load	Kg.cm	25					
Stepping angle with a gearbox	deg	0.3	0.18	0.1	0.05	0.36	0.018

● Dimension



● Wiring Diagram

