

1.8° Size 39mm Hybrid Stepping Motor

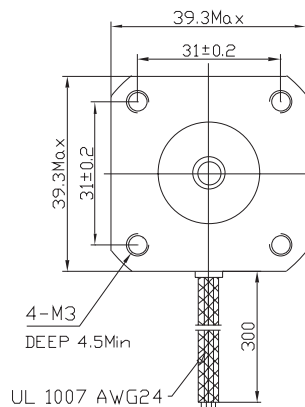
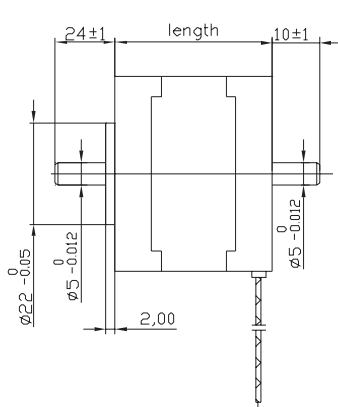
● General Specification for Hybrid Stepping Motor

Item	Specifications
Step Angle	1.8°
Step Angle Accuracy	± 5% (full step, no load)
Resistance Accuracy	± 10%
Inductance Accuracy	± 20%
Temperature Rise	80°C Max.(rated current,2 phase on)
Ambient Temperature	-20°C~+50°C
Insulation Resistance	100M Ω Min. ,500VDC
Dielectric Strength	500VAC for one minute
Shaft Radial Play	0.02Max. (450 g-load)
Shaft Axial Play	0.08Max. (450 g-load)
Max. radial force	28N (20mm from the flange)
Max. axial force	10N
Rotation	CW(See from Front Flange)

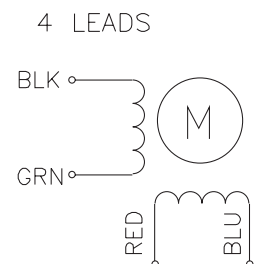
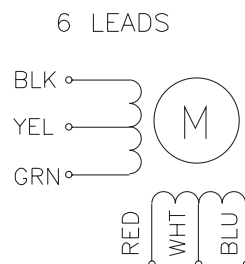
● Size 39mm Hybrid Stepping Motor Specifications

Model No.		Rated Voltage	Current /Phase	Resistance /Phase	Inductance /Phase	Holding Torque	# of Leads	Rotor Inertia	Weight	Detent Torque	Length
Single shaft	Double shaft	V	A	Ω	mH	g-cm		g-cm ²	kg	g-cm	mm
FL39ST20-0404A	FL39ST20-0404B	2.64	0.4	6.6	7.5	650	4	11	0.12	50	20
FL39ST20-0506A	FL39ST20-0506B	6.5	0.5	13	7.5	800	6	20	0.18	120	34
FL39ST34-0654A	FL39ST34-0654B	4.55	0.65	7.0	9.3	1800	4				
FL39ST34-0404A	FL39ST34-0404B	12	0.4	30	32	2100	4				
FL39ST34-0604A	FL39ST34-0604B	9	0.6	15	16	2200	4				
FL39ST34-0306A	FL39ST34-0306B	12	0.3	40	20	1300	6				
FL39ST34-0166A	FL39ST34-0166B	12	0.16	75	50	1100	6				
FL39ST38-0504A	FL39ST38-0504B	12	0.5	24	45	2900	4	24	0.2	180	38
FL39ST38-0806A	FL39ST38-0806B	6	0.8	7.5	6	2000	6	40	0.25	250	44
FL39ST44-0304A	FL39ST44-0304B	12	0.3	40	100	2800	4				

● Dimension

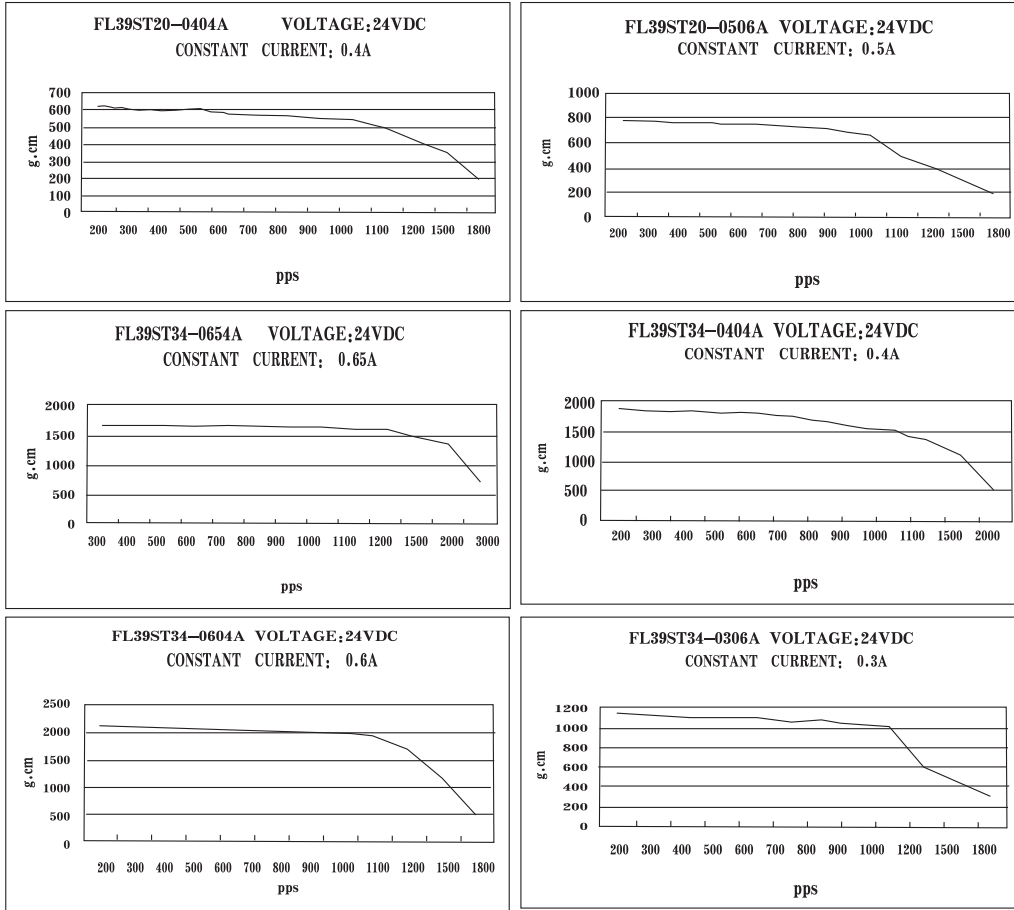


Wiring Diagram



1.8° Size 39mm Hybrid Stepping Motor

● Pull out Torque Curve



● Pull out Torque Curve

