

## 3.6° Size 42mm Hybrid Stepping Motor

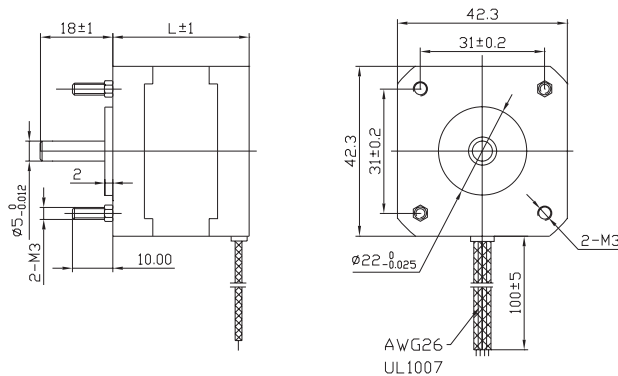
### ● General Specification for High Torque Hybrid Stepping Motor

| Item                  | Specifications                     |
|-----------------------|------------------------------------|
| Step Angle            | 3.6°                               |
| Step Angle Accuracy   | ± 5% (full step, no load)          |
| Resistance Accuracy   | ± 10%                              |
| Inductance Accuracy   | ± 20%                              |
| Temperature Rise      | 80°CMax.(rated current,2 phase on) |
| Ambient Temperature   | -20°C~+50°C                        |
| Insulation Resistance | 100M Ω Min. ,500VDC                |
| Dielectric Strength   | 500VAC for one minute              |
| Shaft Radial Play     | 0.02Max. (450 g-load)              |
| Shaft Axial Play      | 0.08Max. (450 g-load)              |
| Max. radial force     | 28N (20mm from the flange)         |
| Max. axial force      | 10N                                |
| Rotation              | CW( See from Front Flange)         |

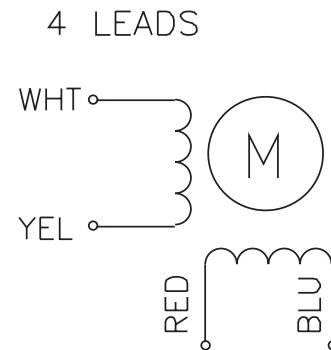
### ● Size 42mm Hybrid Stepping Motor Specifications

| Model No.       |                 | Rated Voltage | Current /Phase | Resistance /Phase | Inductance /Phase | Holding Torque | # of Leads | Rotor Inertia     | Weight | Detent Torque | Length |
|-----------------|-----------------|---------------|----------------|-------------------|-------------------|----------------|------------|-------------------|--------|---------------|--------|
| Single Shaft    | Double Shaft    | V             | A              | Ω                 | mH                | g-cm           |            | g-cm <sup>2</sup> | kg     | g-cm          | mm     |
| FL42ST34-0954DA | FL42ST34-0954DB | 9.31          | 0.095          | 98                | 200               | 530            | 4          | 20                | 0.20   | 150           | 34     |
| FL42ST38-0954DA | FL42ST38-0954DB | 9.98          | 0.095          | 105               | 330               | 700            | 4          | 23                | 0.23   | 150           | 38     |

### ● Dimension



### ● Wiring Diagram:



### ● Pull out Torque Curve:

