

## 1.8° Size 57mm Hybrid Stepping Motor

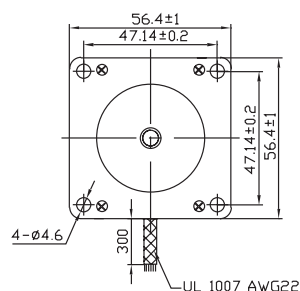
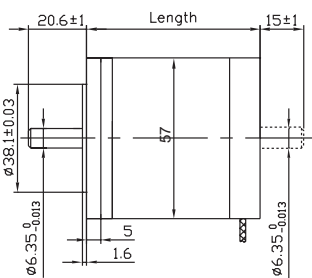
### ● General Specification for Hybrid Stepping Motor

Item	Specifications
Step Angle	1.8°
Step Angle Accuracy	± 5% (full step, no load)
Resistance Accuracy	± 10%
Inductance Accuracy	± 20%
Temperature Rise	80°C Max.(rated current,2 phase on)
Ambient Temperature	-20°C~+50°C
Insulation Resistance	100M Ω Min. ,500VDC
Dielectric Strength	500VAC for one minute
Shaft Radial Play	0.02Max. (450 g-load)
Shaft Axial Play	0.08Max. (450 g-load)
Max. radial force	75N (20mm from the flange)
Max. axial force	15N
Rotation	CW( See from Front Flange)

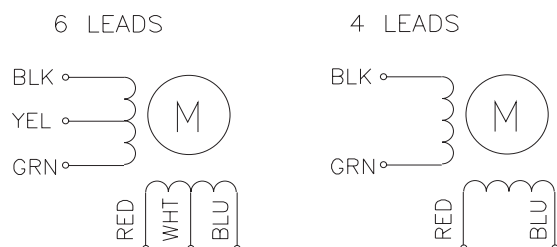
### ● Size 57mm Hybrid Stepping Motor Specifications

Model No.		Rated Voltage	Current /Phase	Resistance /Phase	Inductance /Phase	Holding Torque	# of Leads	Rotor Inertia	Weight	Detent Torque	Length
Single Shaft	Double Shaft	V	A	Ω	mH	kg-cm		g-cm <sup>2</sup>	kg	kg-cm	mm
FL57ST41-1106A	FL57ST41-1106B	4	1.1	3.6	3.6	2.88	6	57	0.54	0.18	41
FL57ST41-0406A	FL57ST41-0406B	12	0.4	30	30						
FL57ST41-1564A	FL57ST41-1564B	2.8	1.56	1.8	3.6						
FL57ST51-0856A	FL57ST51-0856B	6	0.85	7.1	9	4.97	6	110	0.60	0.35	51
FL57ST51-0426A	FL57ST51-0426B	12	0.42	29	36						
FL57ST51-2804A	FL57ST51-2804B	1.8	2.8	0.65	1.6	6.9	4				
FL57ST56-1206A	FL57ST56-1206B	6	1.2	5	8	6.05	6	135	0.65	0.42	56
FL57ST56-0606A	FL57ST56-0606B	12	0.6	20	32						
FL57ST56-2554A	FL57ST56-2554B	2.8	2.55	1.1	3.6						
FL57ST76-1506A	FL57ST76-1506B	5.4	1.5	3.6	6	9	6	200	0.95	0.72	76
FL57ST76-0686A	FL57ST76-0686B	12	0.68	17.7	30						
FL57ST76-3304A	FL57ST76-3304B	2.7	3.3	0.85	3	2.5	4				

### ● Dimension



### Wiring Diagram



# 1.8° Size 57mm Hybrid Stepping Motor

## ● Pull out Torque Curve

