

## 3-Phase Size 86mm Hybrid Stepping Motor

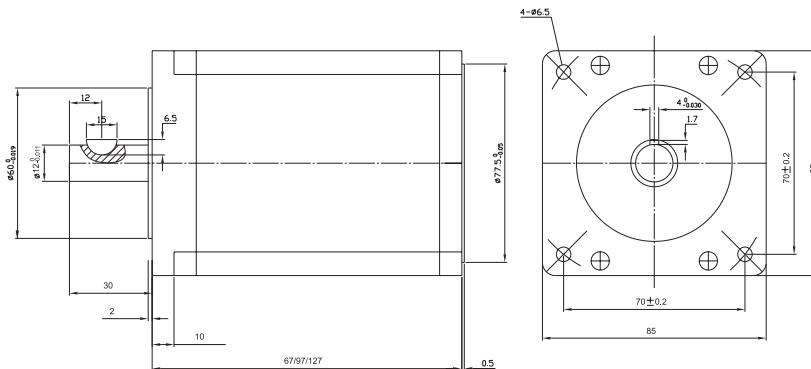
- General Specification for High Torque Hybrid Stepping Motor

| Item                  | Specifications              |
|-----------------------|-----------------------------|
| Step Angle            | 1.8°, 0.9°, 0.72°, 0.36°    |
| Step Angle Accuracy   | ± 5% (full step, no load)   |
| Resistance Accuracy   | ± 10%                       |
| Inductance Accuracy   | ± 20%                       |
| Temperature Rise      | 125°CMax.                   |
| Ambient Temperature   | -20°C~+50°C                 |
| Insulation Resistance | 100M Ω Min. ,500VDC         |
| Dielectric Strength   | 2200VAC for one second      |
| Shaft Radial Play     | 0.02Max. (450 g-load)       |
| Shaft Axial Play      | 0.08Max. (450 g-load)       |
| Max. radial force     | 220N (20mm from the flange) |
| Max. axial force      | 60N                         |

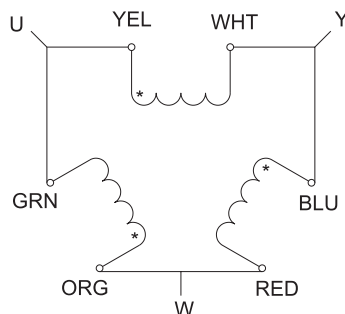
- Specification

| Model No.<br>Single shaft | Voltage/<br>Phase | Current<br>/Phase | Resistance<br>/Phase | Inductance<br>/Phase | Holding<br>Torque | # of<br>Leads | Rotor<br>Inertia  | Weight |
|---------------------------|-------------------|-------------------|----------------------|----------------------|-------------------|---------------|-------------------|--------|
|                           | VAC               | A                 | Ω                    | mH                   | N.m               |               | g-cm <sup>2</sup> | kg     |
| FL863P67-01               | 325               | 1.75              | 4.25                 | 12.3                 | 2.26              | 6             | 1100              | 1.65   |
| FL863P97-01               |                   | 2                 | 5.4                  | 23                   | 4.52              |               | 2200              | 2.7    |
| FL863P127-01              |                   | 2.25              | 9                    | 41                   | 6.78              |               | 3300              | 3.8    |

- Dimension



- Wiring Diagram



## 1.8° Size 86mm High Torque Hybrid Stepping Motor

- Pull out Torque Curve

