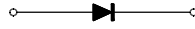
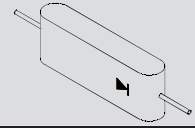
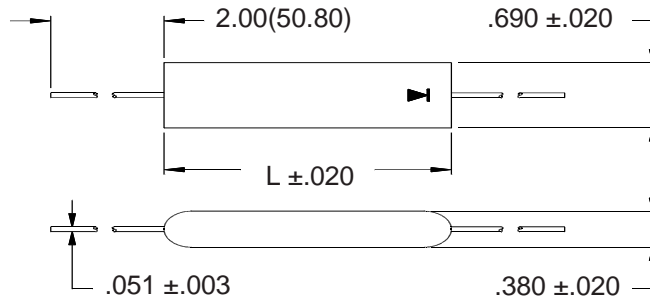


**Spice Model****FP100F****Electrical Characteristics and Maximum Ratings**

Part Number	Working Reverse Voltage (Vrwm)	Average Rectified Current (Io)		Reverse Current @ Vrwm (Ir)		Forward Voltage (Vf)		1 Cycle Surge Current tp=8.3ms (Ifsm)	Repetitive Surge Current (Ifrm)	Reverse Recovery Time (3) (Trr)	Case Length (L)
		55°C(1)	100°C(2)	25°C	100°C	25°C		25°C	25°C	25°C	
	Volts	Amps	Amps	µA	µA	Volts	A	Amps	Amps	ns	In.
FP100F	10000	2.2	1.3	2.0	50	24.0	3.0	120	20	150	4.500



Name	Parameter	Value	Units
IS	Reverse leakage current	5.0E-07	Amps
N	Emission coefficient	52.8	
T	Temperature	25	C
RS	Diode series resistance	0.36	Ohm
TT	Transit time	70	nS
CJ0	Zero-bias junction capacitance	17.62	pF
VJ	Bulk junction potential	3.29	Volts
M	Grading coefficient	0.5	
EG	Energy-band gap	1.11	Volts
XTI	Temperature coefficient	3	
KF	Flicker-noise coefficient	0	
AF	Flicker-noise exponent	1	
FC	Coefficient for capacitance	0.5	
BV	Diode breakdown voltage	14400	Volts
IBV	Diode breakdown current	100	uAmps

Dimensions: In. (mm) \* All temperatures are ambient unless otherwise noted. \* Data subject to change without notice.



**Voltage Multipliers, Inc.**  
8711 W. Roosevelt Ave.  
Visalia, CA 93291

Tel (559) 651-1402  
Fax (559) 651-0740  
www.voltagemultipliers.com