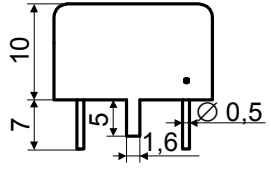
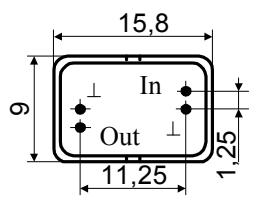
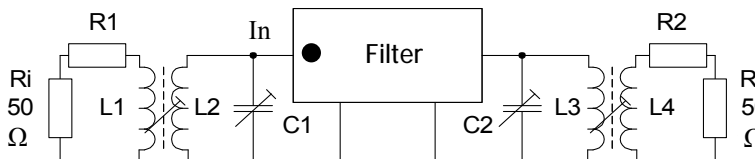
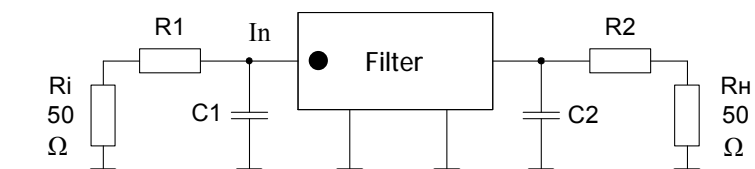


**Quartz Monolithic Filters FP2P4-557-04 (No. of Poles 6),  
FP2P4-557-02 (No. Of Poles 8), FP2P4-557 (No. Of Poles 10), industry**

Center frequ. range, (kHz)	Operating Mode, (class)	3dB Pass Band, (ppm)	In-Band Ripple, max (dB)	Insertion Loss, max (dB)			Shape Factor (unit)			Guaranteed Attenuation, min (dB)			Circ. Conn. Pic.	Temper. range, (class)	Package Style Pic.
				-557	-557-02	-557-04	-557 (80/3 dB)	-557-02 (80/3 dB)	-557-04 (60/3 dB)	-557	-557-02	-557-04			
15000.. ..27000	Fund.	200...500	1,0	11,0	9,0	7,0	2,25	2,85	3,0	95	90	75	2	A, V, D	1
		500...750	1,3	10,0	8,0	6,0	2,25	2,8	2,8						
		750...1100	1,5	10,0	8,0	6,0	2,2	2,7	2,7						
		1100...1800	1,5	10,0	8,0	6,0	2,25	2,8	2,8						
27000.. ..37000	Fund.	200...500	1,0	11,0	9,0	7,0	2,25	2,85	3,0	95	90	75	3	A, V, D	1
		500...750	1,3	10,0	8,0	6,0	2,25	2,8	2,8						
		750...1100	1,5	10,0	8,0	6,0	2,2	2,7	2,7						
		1100...1800	1,5	10,0	8,0	6,0	2,25	2,8	2,8						
1800..2500	2,0	10,0	8,0	6,0	2,25	2,8	2,8								

**Typical series**

Model Number	Center Freq., (kHz)	3dB Pass Band, min (kHz)	In-Band Ripple, max (dB)	Insertion Loss, max (dB)	Shape Factor		Guarant. Attenuation, min (dB)	Pack. Style Pic.	Circ. Conn. Pic.	Temper. range, class	Terminating Impedance			
					max (un.)	of range. (dB)					R1,R2 (Ω)	C1, C2 pF	L1 L2 L3 L4 (μh)	
FP2P4-557, 557-01 (No. of Poles 10)														
-557-20,0M-18	20000	18,0	1,5	10,0	2,2	80/3	95	1	3	A,V,D	470	Selection	0,3	1,2
-557-21,4M-6	21400	6,0	1,0	11,0	2,25	80/3	95	1	2	A,V,D	750	3,5	-	-
-557-21,4M-17	21400	17,0	1,5	10,0	2,2	80/3	95	1	3	A,V,D	470	Selection	0,3	1,2
-557-35,0M-15	35000	15,0	1,0	11,0	2,25	80/3	95	1	2	A,V,D	270	3,5	-	-
-557--21,4M-17	21400	17,0	1,5	10,0	2,2	80/3	95	1	3	A,V,D	470	Selection	0,3	1,2
-557-25,0M-17	25000	17,0	1,3	10,0	2,25	80/3	95	1	2	D	1500	3,5	-	-
-557-25,0M-7	25000	7,0	1,0	11,0	2,25	80/3	95	1	2	D	560	3,5	-	-
-557-20,0M-17	20000	17,0	1,3	11,0	2,25	80/3	95	1	2	D	1800	1,7	-	-
FP2P4-557-02 (No. of Poles 8)														
-557-02-34,785M-45	34785	45,0	1,5	8,0	2,8	80/3	90	1	3	A,V,D	240	Selection	0,3	1,2
-557-02-35,0M-15	35000	15,0	1,0	9,0	2,85	80/3	90	1	2	A,V,D	270	3,5	-	-
-557-02-36,0M-7,5	36000	7,5	1,0	9,0	2,85	80/3	90	1	2	A,V,D	100	5,0	-	-
-557-02-46,95M-25	46950	25,0	2,0	8,0	2,8	80/3	90	1	2	V	2600	3,5	-	-
-557-02-15,0M-33	15000	33,0	2,0	8,0	2,8	80/3	90	1	3	A	820	-	0,3	1,2
-557-02-23,0M-70	23000	70,0	2,0	8,0	2,8	80/3	90	1	3	A,V,D	1200	-	0,3	1,2
-557-02-21,4M-18	21400	18,0	1,5	8,0	2,7	80/3	90	1	2	D	2200	3,5	-	-
-557-02-23,0M-60	23000	60,0	2,0	8,0	2,8	80/3	90	1	3	R	1200	-	0,3	1,2
-557-02-21,4M-40	21400	40,0	2,0	8,0	2,8	80/3	90	1	3	D	910	-	0,3	1,2
FP2P4-557-04 (No. of Poles 6)														
-557-04-30,0M-10	30000	10,0	1,0	7,0	3,0	60/3	75	1	2	A,V,D	390	6,2	-	-
-557-04-34,785M-45	34785	45,0	1,5	6,0	2,8	60/3	75	1	3	A,V,D	240	Selection	0,3	1,2



Technique of measurements of Insertion Loss and Guaranteed Attenuation are various. Provisional conformity:10dB-4dB. Class temperature range: -10...+60(A);-40...+70(V);-60...+85(D)

Ordering Information: Product name (FP2P4-557-02) + Class temperature range (D) + Center Frequency (MHz) +M +Pass Band (kHz)

e.g.: Filter FP2P4-557-02-D-30,0M-10