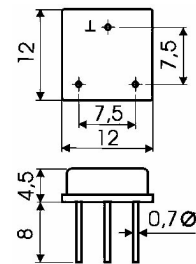


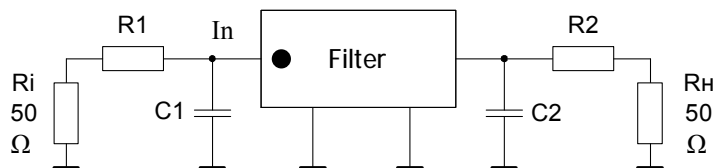
Quartz Monolithic Band-pass Filters FP2P4-569 (No. of Poles 4), industry

Model Number	Center frequency range, (kHz)	Operat. mode (class)	3dB Pass Band, min (ppm)	In-Band Ripple, max (dB)	Insertion Loss, max (dB)	Pass Bandwidth (at 30dB-level) max (kHz)	Guaranteed Attenuation, min (dB)	Pack. Style Pic.	Circ. Conn. Pic.	Temperature range, °C class	Terminating Impedance	
											R1,R2 (Ω)	C1,C2 (pF)
	10,0...27,0	Fundam.	(100..500)	0				1	2			
Typical Series												
FP2P4-569	10700	Fundam.	5 KHz	0	2,0	20	40	1	2	D	1200	3,5
FP2P4-569-01	10700	Fundam.	8 kHz	0	2,0	25	40	1	2	D	1600	3,5
FP2P4-569-02	10000	Fundam.	7,5 kHz	0	2,0	20	40	1	2	D	1600	3,5

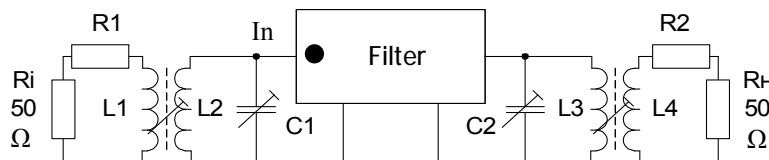
Mechanical characteristics
- Vibrations 1...500 Hz, 10g
- Mechanical shock of single action 150g
- Mechanical shock of repeated action 40g
- Linear acceleration 150g
Aging
- Min 15000 hrs. of continuous operation
- Storage 20 years



Pic.1



Pic.2



Pic.3

Class temperature range: A- (-10...60) °C; V- (-40...70) °C; D- (-60...85) °C

Ordering Information: Product name (FP2P4-569-01) + Class temperature range (D)

e.g.: Filter FP2P4-569-D