

16, Nan-ke 9th Rd., Science-based Industrial Park, Tainan, Taiwan

Tel: +886-6-6008999 Fax: +886-6-5050826

<http://www.f-tech.com.tw>

Model No.: FR0915M00-DJ12  
915.00 MHz SAW Resonator

Rev. No.: 1

**A. Feature:**

1. One-port SAW Resonator

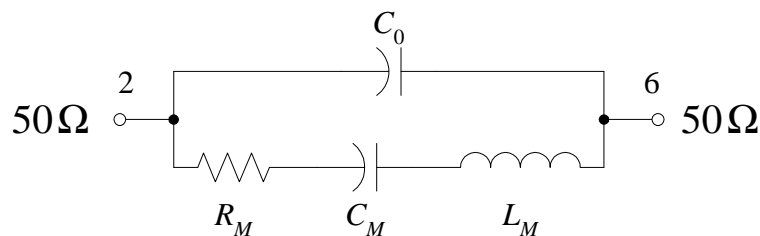
**B. Maximum Ratings:**

1. Input Power Level: 0dBm
2. DC Voltage: 10V
3. Storage Temperature: -40°C to +85°C
4. Operating Temperature Range: -40°C to +85°C

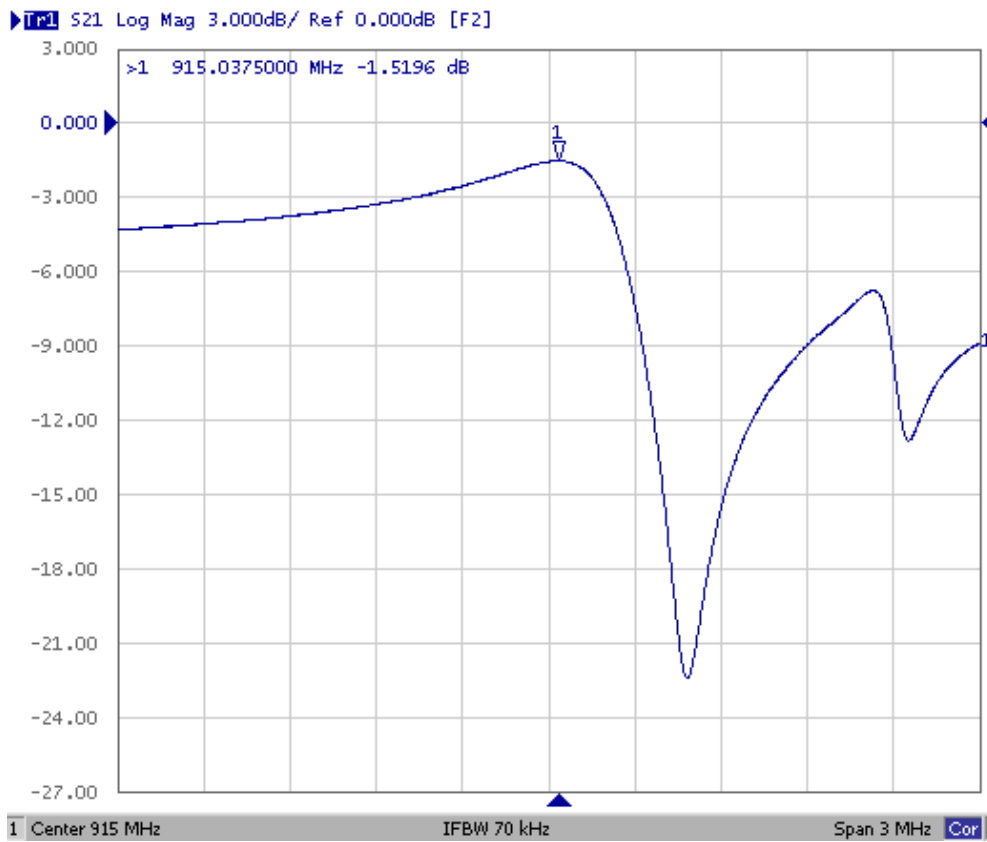
**C. Electrical Specifications:**

Ambient Temperature: 23°C

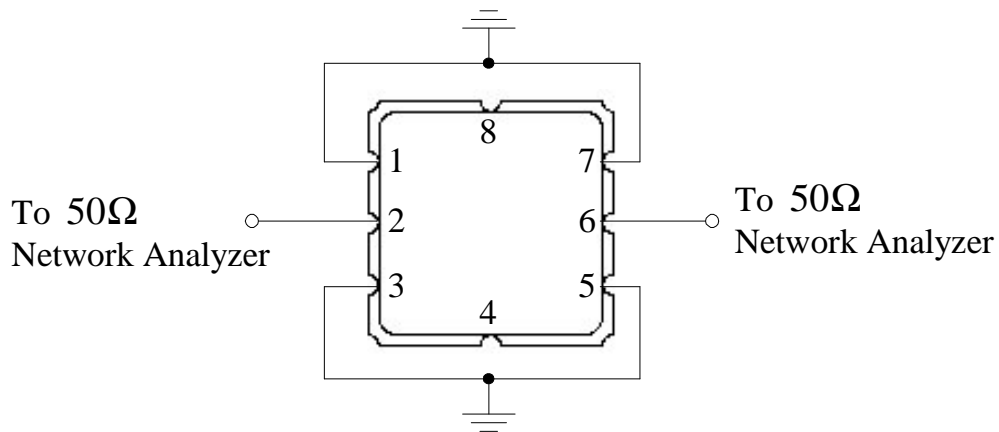
Item	Unit	Min.	Typ.	Max.
Center Frequency, $f_r$	MHz	914.85	915.00	915.15
Insertion Loss, IL	dB	-	1.5	2.5
Unloaded quality factor, $Q_U$		-	8000	-
Loaded quality factor, $Q_L$		-	1200	-
RF Equivalent RLC Model				
Motional Resistance, $R_M$	$\Omega$	-	18	-
Motional Capacitance, $C_M$	fF	-	1.3651	-
Motional Inductance, $L_M$	$\mu$ H	-	22.1564	-
Shunt Static Capacitance, $C_0$	pF	-	1.6	-
Turnover Temperature, $T_0$	°C	20	40	55
Frequency Temperature Coefficient, $FTC$	ppm/k <sup>2</sup>	-	0.032	-

**D. RF Equivalent Model:**

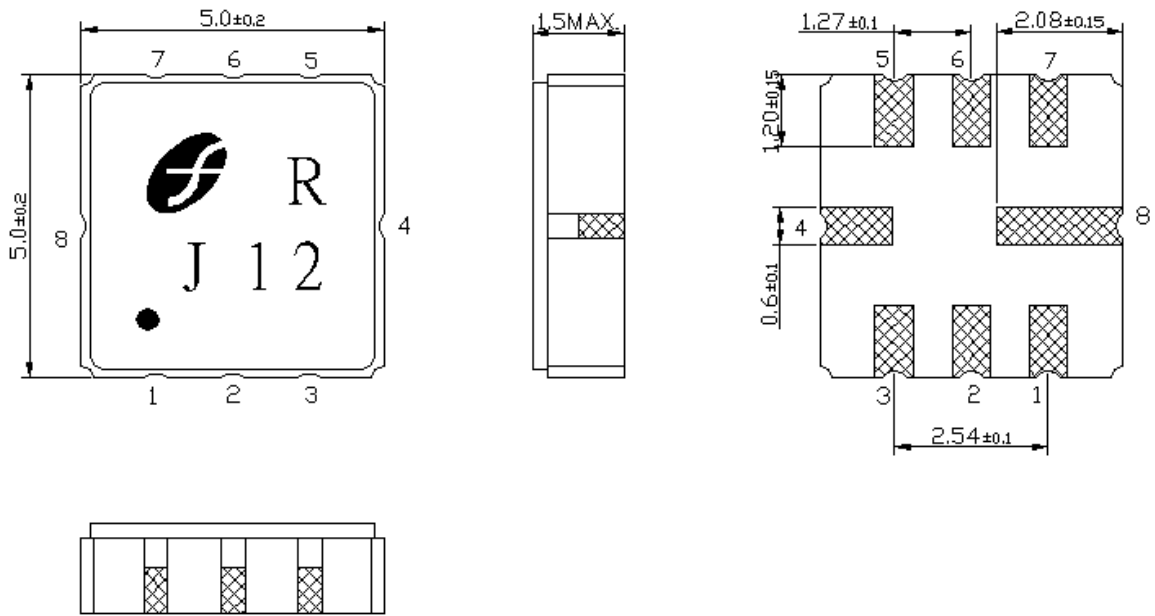
E. Characteristics:



F. Test Circuit:



G. Package and pin configuration:



(Unit: mm)

- |                       |                       |
|-----------------------|-----------------------|
| Pin 1: Ground         | Pin 5: Ground         |
| Pin 2: Input          | Pin 6: Output         |
| Pin 3: Ground         | Pin 7: Ground         |
| Pin 4: Package Ground | Pin 8: Package Ground |