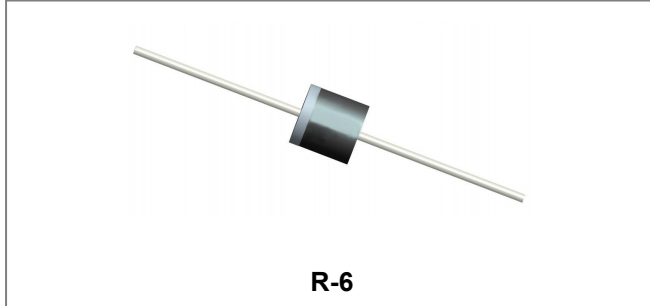


# FR601G THRU FR607G

## GLASS PASSIVATED FAST RECOVERY RECTIFIERS

Reverse Voltage - 50 to 1000 Volts Forward Current - 6.0 Amperes



### Features

- The plastic package carries Underwriters Laboratory Flammability Classification 94V-0
- Fast switching for high efficiency
- Low reverse leakage
- High forward surge current capability
- High temperature soldering guaranteed: 260 C/10 seconds, 0.375" (9.5mm) lead length, 5 lbs. (2.3kg) tension
- This is a Pb - Free Device
- All SMC parts are traceable to the wafer lot
- Additional testing can be offered upon request

### Circuit Diagram



### Mechanical Data

- Case: R-6 molded plastic
- Terminals: Plated axial leads, solderable per MIL-STD-202, Method 208
- Polarity: Color band denotes cathode end
- Mounting Position: Any
- Weight: 2.1 grams

### Maximum Ratings and Electrical Characteristics @T<sub>A</sub>=25°C unless otherwise specified

Single phase half-wave 60Hz, resistive or inductive load, for capacitive load current derate by 20%.

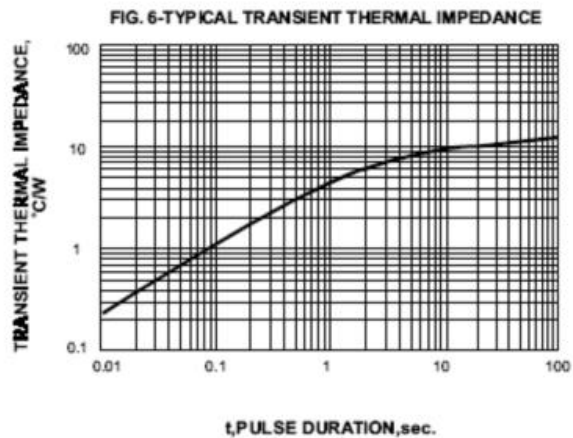
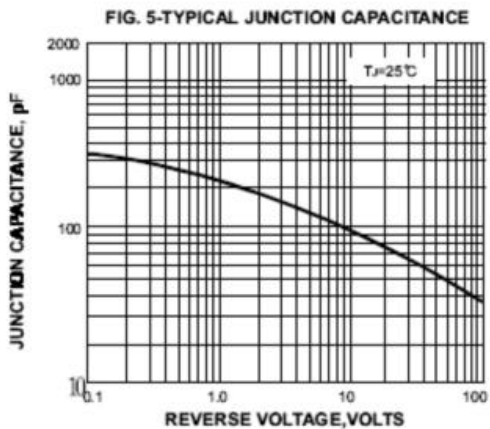
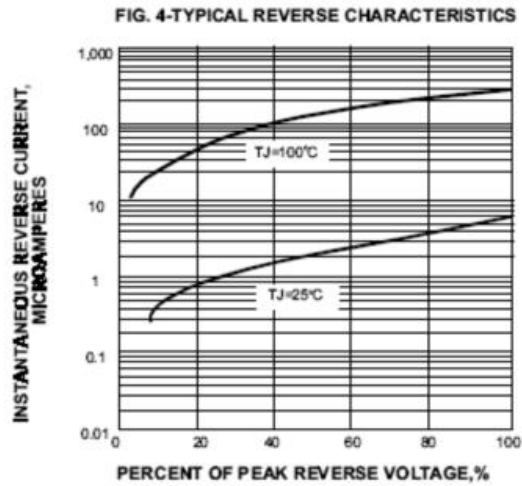
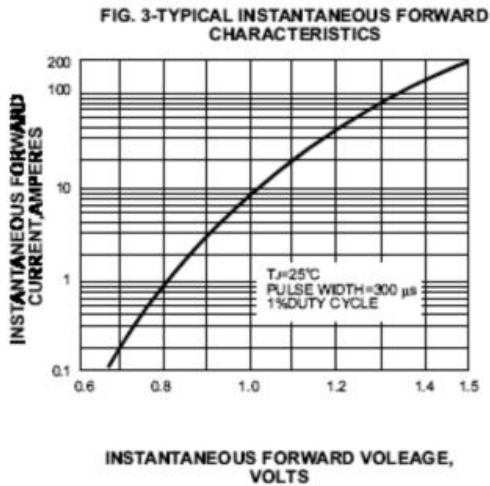
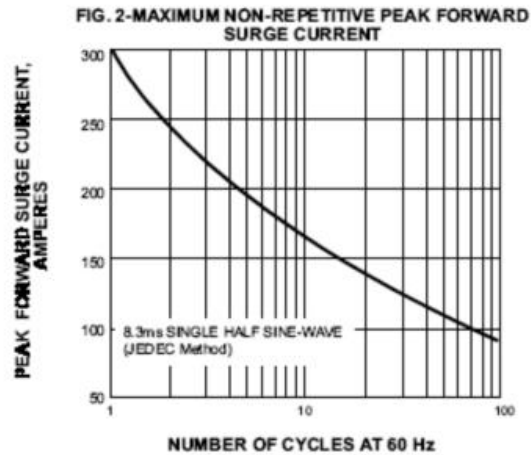
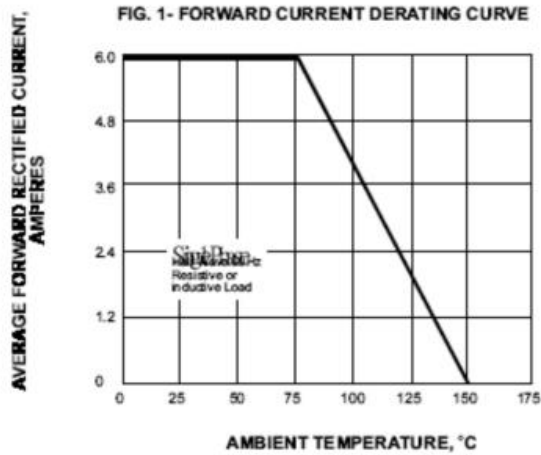
Characteristic	Symbol	FR 601G	FR 602G	FR 603G	FR 604G	FR 605G	FR 606G	FR 607G	Units
Maximum repetitive peak reverse voltage Maximum DC blocking voltage	V <sub>RRM</sub> V <sub>DC</sub>	50	100	200	400	600	800	1000	V
Maximum RMS voltage	V <sub>RMS</sub>	35	70	140	280	420	560	700	V
Maximum average forward rectified current 0.375" (9.5mm) lead length at @T <sub>A</sub> = 75°C	I <sub>(AV)</sub>	6.0							A
Peak forward surge current 8.3ms single half sine-wave superimposed on rated load (JEDEC Method)	I <sub>FSM</sub>	300							A
Maximum instantaneous forward voltage at 6.0A	V <sub>F</sub>	1.3							V
Maximum DC reverse current @T <sub>A</sub> = 25°C At Rated DC Blocking Voltage @T <sub>A</sub> = 100°C	I <sub>RM</sub>	10 200							µA
Maximum reverse recovery time (Note 1)	t <sub>r</sub>	150				250	500		ns
Typical Junction Capacitance (Note 2)	C <sub>J</sub>	150							pF
Typical Thermal Resistance Junction to Ambient (Note 3)	R <sub>θJA</sub>	10							°C/W
Operating junction temperature range	T <sub>J</sub>	-65 to +150							°C
Operating storage temperature range	T <sub>STG</sub>	-65 to +150							°C

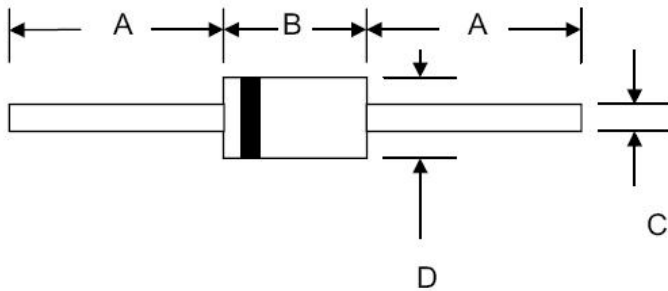
#### \*Glass passivated forms are available upon request

- Note: 1. Reverse recovery condition IF=0.5A, IR=1.0A, Irr=0.25A  
 2. Measured at 1MHz and applied reverse voltage of 4.0V D.C.  
 3. Thermal resistance from junction to ambient at 0.375" (9.5mm) lead length, P.C.B. mounted

- China - Germany - Korea - Singapore - United States •
- <http://www.smc-diodes.com> - [sales@smc-diodes.com](mailto:sales@smc-diodes.com) •

**Ratings and Characteristics Curves**



**Mechanical Dimensions R-6**


SYMBOL	Millimeters		Inches	
	Min.	Max.	Min.	Max.
A	25.4	-	1.000	-
B	8.60	9.10	0.340	0.360
C	1.2	1.3	0.048	0.052
D	8.60	9.10	0.340	0.360

**Ordering Information**

Device	Package	Shipping
FR601G-FR607G	R-6 (Pb-Free)	500pcs / reel

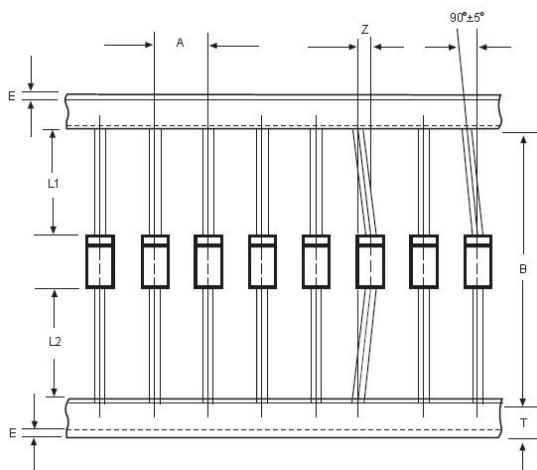
For information on tape and reel specifications, including part orientation and tape sizes, please refer to our tape and reel packaging specification.

**Marking Diagram**


Where XXXXX is YYWWL

FR601G = Part Name  
 SSG = SSG  
 YY = Year  
 WW = Week  
 L = Lot Number

Cautions: Molding resin  
 Epoxy resin UL:94V-0

**Carrier Tape Specification R-6**


SYMBOL	Millimeters	
	Min.	Max.
A	9.50	10.50
B	50.9	53.9
Z	-	1.20
T	5.60	6.40
E	-	0.80
IL1-L2I	-	1.0

**DISCLAIMER:**

1- The information given herein, including the specifications and dimensions, is subject to change without prior notice to improve product characteristics. Before ordering, purchasers are advised to contact the SMC - Sangdest Microelectronics (Nanjing) Co., Ltd sales department for the latest version of the datasheet(s).

2- In cases where extremely high reliability is required (such as use in nuclear power control, aerospace and aviation, traffic equipment, medical equipment, and safety equipment), safety should be ensured by using semiconductor devices that feature assured safety or by means of users' fail-safe precautions or other arrangement.

3- In no event shall SMC - Sangdest Microelectronics (Nanjing) Co., Ltd be liable for any damages that may result from an accident or any other cause during operation of the user's units according to the datasheet(s). SMC - Sangdest Microelectronics (Nanjing) Co., Ltd assumes no responsibility for any intellectual property claims or any other problems that may result from applications of information, products or circuits described in the datasheets.

4- In no event shall SMC - Sangdest Microelectronics (Nanjing) Co., Ltd be liable for any failure in a semiconductor device or any secondary damage resulting from use at a value exceeding the absolute maximum rating.

5- No license is granted by the datasheet(s) under any patents or other rights of any third party or SMC - Sangdest Microelectronics (Nanjing) Co., Ltd.

6- The datasheet(s) may not be reproduced or duplicated, in any form, in whole or part, without the expressed written permission of SMC - Sangdest Microelectronics (Nanjing) Co., Ltd.

7- The products (technologies) described in the datasheet(s) are not to be provided to any party whose purpose in their application will hinder maintenance of international peace and safety nor are they to be applied to that purpose by their direct purchasers or any third party. When exporting these products (technologies), the necessary procedures are to be taken in accordance with related laws and regulations..