

FS0805

Ferrite Chip Inductor 0805 High L (0.470 μ H-10.00 μ H)

www.DataSheet4U.com

Features

Leadless inductor wound on ferrite body. High SRF, allow excellent operation in RFID 13.56 MHz, filters in GSM frequencies, DECT, cordless communications, wireless LANs, etc.

FS0805 ferrite wound chip inductor is manufactured under 100% test of **L** and **Q** actual operating frequencies. Fully automatic machine made.

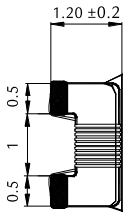
High production capacity ensures immediate delivery time.

Materials

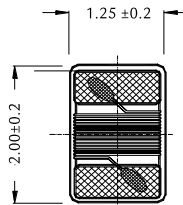
0805 FS type in ferrite body

Metallization: Ag+Ni+Sn100

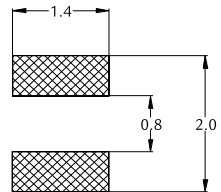
Dimensions



Side view



Bottom view



Pad layout

Product List

Ordering code ²	L _R (μ H)	Tolerance ¹	Q _{Min}	SRF Min. (MHz)	RDC (Ω) max.	IDC max. (mA)
FS0805-471+	0.470@25.2 MHz	G, J, K	45 @ 100 MHz	375	0.95	500
FS0805-561+	0.560@25.2 MHz	G, J, K	45 @ 100 MHz	340	1.10	450
FS0805-681+	0.680@25.2 MHz	G, J, K	35 @ 100 MHz	188	1.20	400
FS0805-821+	0.820@25.2 MHz	G, J, K	35 @ 100 MHz	215	1.50	300
FS0805-102+	1.00 @ 25.2 MHz	G, J, K	35 @ 50 MHz	200	2.13	180
FS0805-122+	1.20 @ 7.96 MHz	G, J, K	15 @ 7.96 MHz	200	2.38	150
FS0805-152+	1.50 @ 7.96 MHz	G, J, K	15 @ 7.96 MHz	200	2.90	130
FS0805-182+	1.80 @ 7.96 MHz	G, J, K	15 @ 7.96 MHz	120	3.00	120
FS0805-222+	2.20 @ 7.96 MHz	G, J, K	15 @ 7.96 MHz	110	3.10	110
FS0805-272+	2.70 @ 7.96 MHz	G, J, K	15 @ 7.96 MHz	100	3.50	100
FS0805-332+	3.30 @ 7.96 MHz	G, J, K	15 @ 7.96 MHz	70	2.30	210
FS0805-392+	3.90 @ 7.96 MHz	G, J, K	15 @ 7.96 MHz	60	2.50	200
FS0805-472+	4.70 @ 7.96 MHz	G, J, K	15 @ 7.96 MHz	50	2.80	180
FS0805-562+	5.60 @ 7.96 MHz	G, J, K	15 @ 7.96 MHz	45	3.00	160
FS0805-682+	6.80 @ 7.96 MHz	G, J, K	15 @ 7.96 MHz	45	3.20	130
FS0805-822+	8.20 @ 7.96 MHz	G, J, K	15 @ 7.96 MHz	40	3.50	120
FS0805-103+	10.0 @ 2.52 MHz	G, J, K	15 @ 2.52 MHz	40	5.00	80

1. Closer tolerances upon request.

2. Replace the + by the code letter for the required inductance tolerance (G=2% (if available), J=5%, K=10%, M=20%).