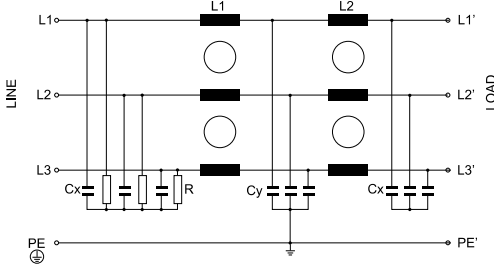


# FVDT-D

## Three Phase Double Stage

www.DataSheet4U.com

### Electrical schematics



### General Specifications

Maximum operating voltage: 520Vac.

Operating frequency: DC - 60Hz.

Hipot test voltage: L/N->PE: 3000Vdc 2s.

Li->Lj: 2250 Vdc 2s.

Application class: HPF Acc. TO DIN 40040

(-25°C/+85°C/95% RH, 30d).

Flammability class: UL 94 V2.

### Three phase double stage

Double stage three phase filter.

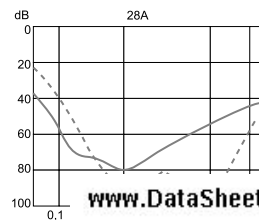
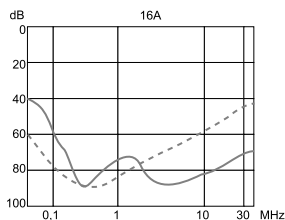
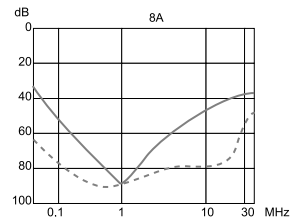
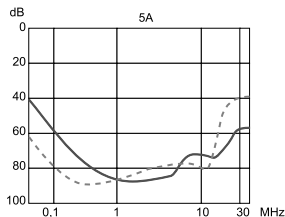
Low leakage current.

### Product List

TYPE	I@50°C	L	CX	CY	R/R'	HOUSING	Max. Ifug mA IEC 950	Max. Ifug mA 400V 50Hz	CONNECTION	WEIGHT ±g
FVDT-005DB	5 Amp	10 mH	1 µF	15 nF	1 MΩ	305	3,2 mA	0,28 mA	4mm <sup>2</sup>	700
FVDT-005DX						306			4mm <sup>2</sup> + AWG18 WIRE	700
FVDT-008DB	8 Amp	5,8 mH	1 µF	15 nF	1 MΩ	305	3,2 mA	0,28 mA	4mm <sup>2</sup>	700
FVDT-008DX						306			4mm <sup>2</sup> + AWG18 WIRE	700
FVDT-016DB	16 Amp	3,7 mH	1 µF	15 nF	1 MΩ	303	3,2 mA	0,28 mA	4mm <sup>2</sup>	1000
FVDT-016DX						304			4mm <sup>2</sup> + AWG11 WIRE	1000
FVDT-028DB	28 Amp	2,9 mH	1 µF	15 nF	1 MΩ	303	3,2 mA	0,28 mA	6mm <sup>2</sup>	1900
FVDT-028DX						304			6mm <sup>2</sup> + AWG9 WIRE	1900

### Insertion Loss

--- ASYM  
— SYM



www.DataSheet4U.com