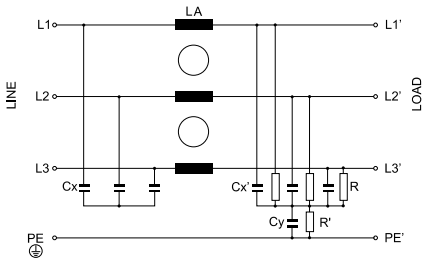


FVSB

Three Phase One Stage

www.DataSheet4U.com

Electrical schematics



RFI Power Line Filters

General Specifications

Maximum operating voltage: 520Vac.

Operating frequency: DC - 60Hz.

Hipot test voltage: L/N→PE: 3000Vdc 2s.

L→N: 2250 Vdc 2s.

Application class: HMF Acc. TO DIN 40040
(-25°C/+100°C/95% RH, 30d).

Flammability class: UL 94 V2.

Three phase double stage

For industrial equipments.

Easy to install.

Compact size

Product List

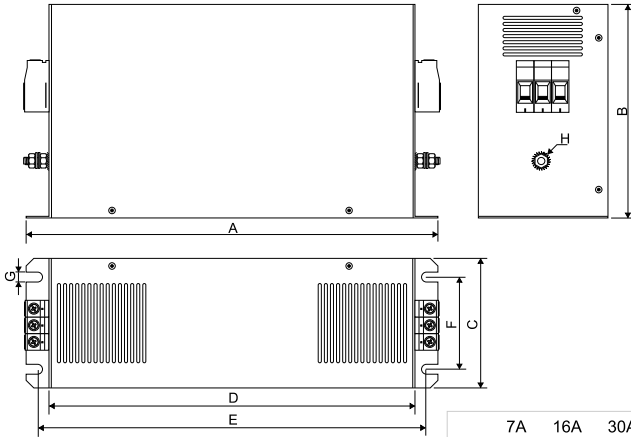
TYPE	I@50°C	LA	CX/CX'	CY	R (MΩ)	Max. Ifug mA IEC 950	Max. Ifug mA 520V 50Hz	CONNECTION TRM.Block	WEIGHT ±g
FVSB-007B	7 Amp	3,9 mH	1 μF	470 nF	1MΩ	38 mA	3,7 mA	4mm2	450
FVSB-016B	16 Amp	900 μH	2,2 μF	470 nF	1MΩ	39 mA	3,7 mA	4mm2	650
FVSB-030B	30 Amp	700 μH	4,4/2,2 μF	470 nF	1MΩ	44 mA	4 mA	6mm2	1000
FVSB-042B	42 Amp	500 μH	4,4/2,2 μF	470 nF	1MΩ	44 mA	4 mA	10mm2	1100
FVSB-055B	55 Amp	360 μH	4,4/2,2 μF	470 nF	1MΩ	44 mA	4 mA	16mm2	1250
FVSB-075B	75 Amp	150 μH	4,4/2,2 μF	470 nF	1MΩ	44 mA	4 mA	25mm2	2000
FVSB-100B	100 Amp	170 μH	4,4/2,2 μF	470 nF	1MΩ	44 mA	4 mA	50mm2	3100
FVSB-130B	130 Amp	75 μH	4,4/2,2 μF	470 nF	1MΩ	44 mA	4 mA	50mm2	3200
FVSB-180B	180 Amp	75 μH	4,4/2,2 μF	470 nF	1MΩ	44 mA	4 mA	90mm2	4550

FVSB

Three Phase One Stage

www.DataSheet4U.com

RFI Power Line Filters



	7A	16A	30A	42A	55A	75A	100A	130A	180A
A	190	250	270	310	310	270	270	270	380
B	70	70	85	85	90	140	150	150	170
C	40	45	60	60	60	85	90	90	120
D	160	220	240	280	280	240	240	240	350
E	180	235	255	295	295	255	255	255	365
F	20	25	30	30	30	60	65	65	102
G	4,5	5,4	5,4	5,4	5,4	6,5	6,5	6,5	6,5
H	M5	M5	M5	M6	M6	M6	M10	M10	M10

Insertion Loss

----- ASYM
 ——— SYM

