

Power Supply, 20-inch Replacement Instructions

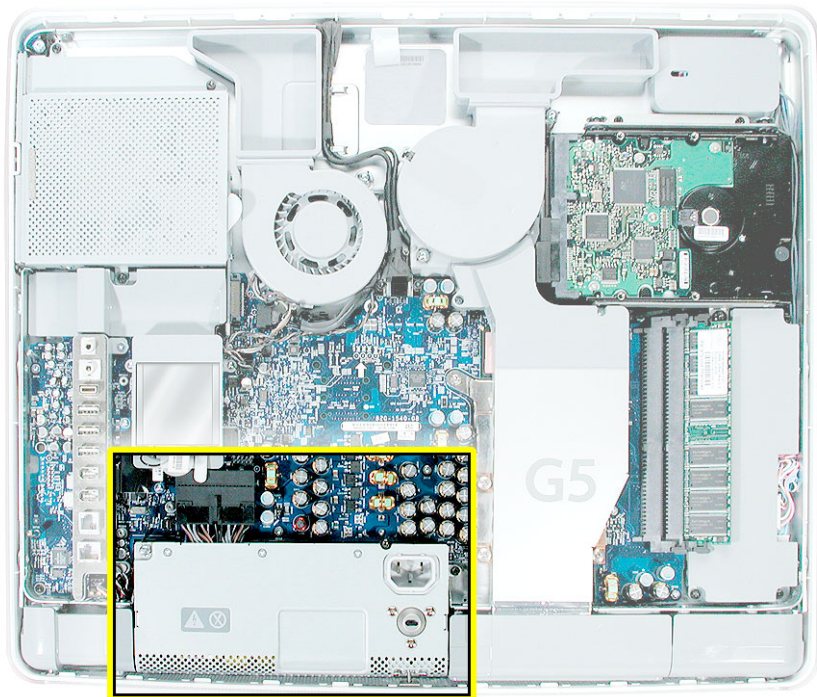
Follow the instructions in this document carefully. Failure to follow these instructions could damage your equipment and void its warranty.

Note: Online instructions are available at <http://www.apple.com/support/doityourself/>.

Tools Required

- Use the screwdriver provided, or a Phillips #1 screwdriver, preferably with a magnetized tip
- Flat blade screwdriver
- Screw tray or equivalent to hold the screws

Part Location



Important Things to Know

1. A spares kit is included with the replacement part. The kit includes:
 - a Phillips #1 screwdriver
 - extra screws
2. All customer removable screws are brass colored. **Do not remove screws unless they are brass colored, or you will void your warranty.**
3. Ground yourself when working on the computer. The procedure will show you how to ground yourself.
4. Do not pull on individual wires when disconnecting a part; pull on the connector.

Opening the Computer

1. Turn off your computer by choosing Shut Down from the Apple () menu.
2. Disconnect all cables, and unplug the power cord from your computer.



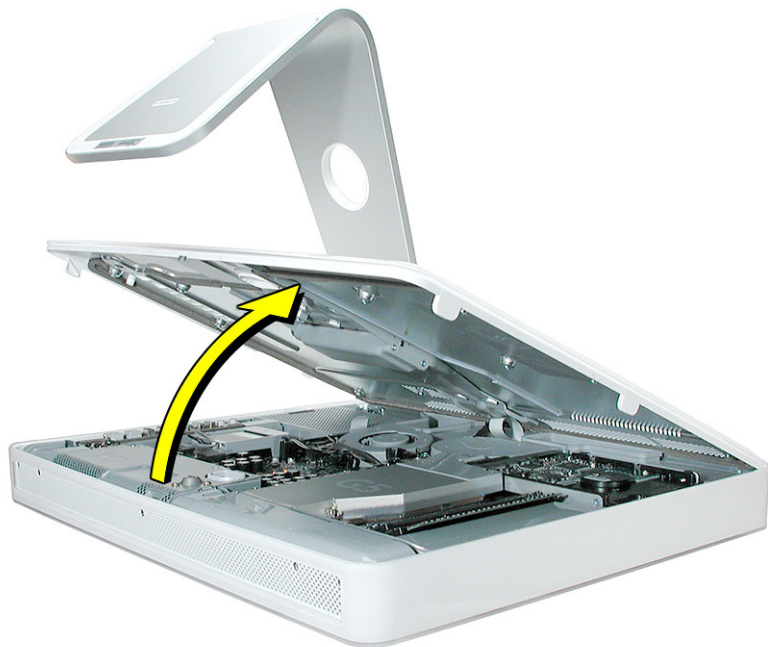
3. Place a soft, clean towel or cloth on the desk or surface. Hold the sides of the computer and slowly lay the computer face down as shown.



4. Locate the three case screws circled below. You may have to lift the metal foot to locate the middle case screw. **Note:** These screws are captive; they are part of the display/bezel assembly and cannot be removed.
5. Using the tool provided, or a Phillips #1 screwdriver, loosen the three captive screws. **Note:** Turn the screws counterclockwise until they stop turning.



6. Holding the back cover by the metal foot, tilt the cover up and lift it off the computer. Set the back cover aside.



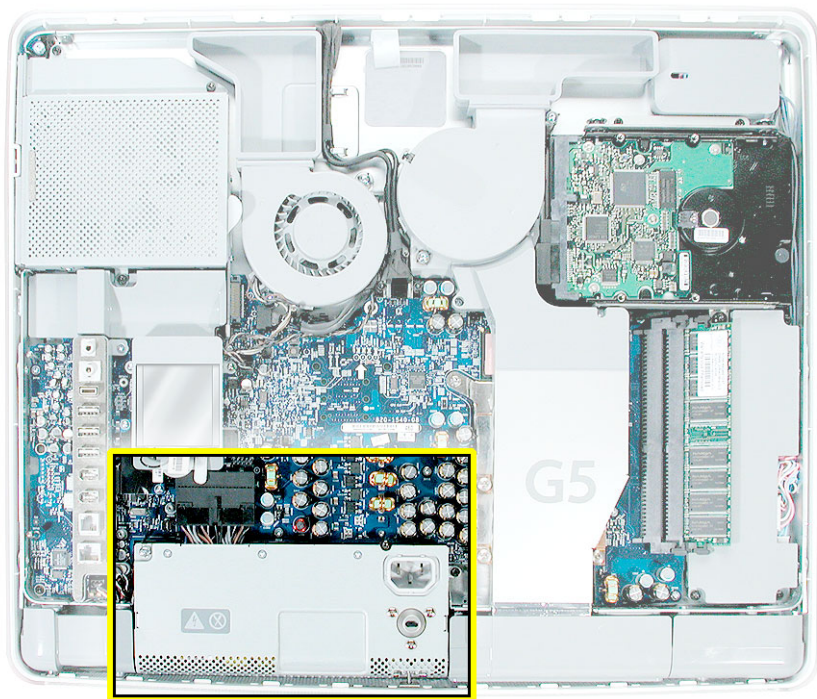
Removing the Power Supply

1. Ground yourself. Touch the metal surface (as shown below) on the inside of the computer to discharge any static electricity.

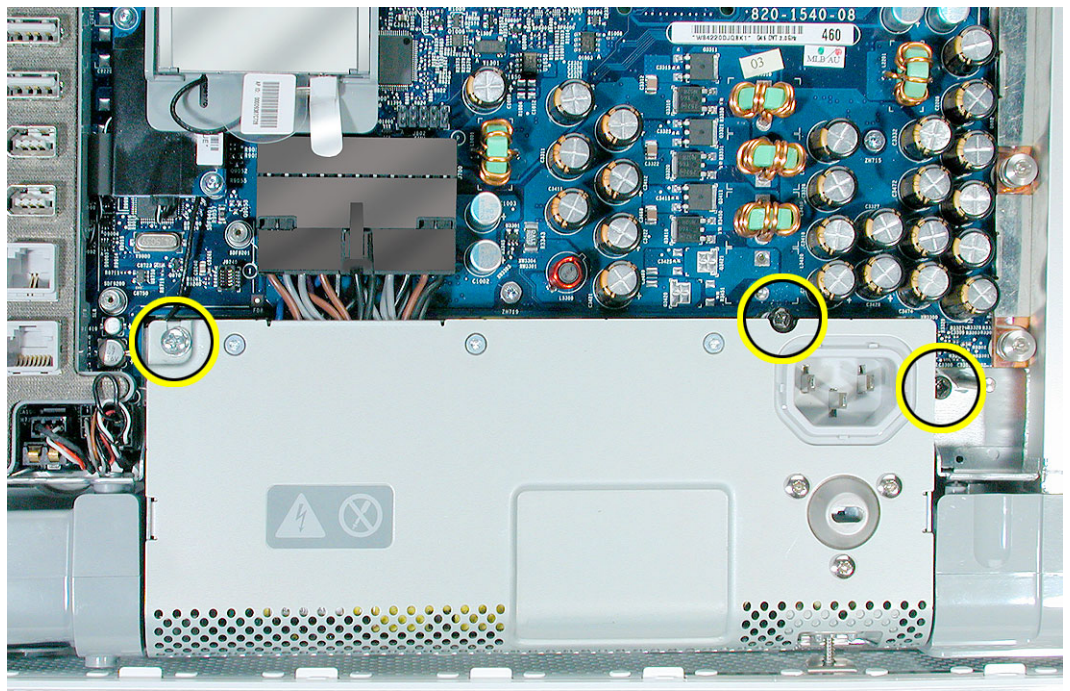
Warning: Always discharge static electricity before you touch any parts or install any components inside the computer. To avoid generating static electricity, do not walk around the room until you have finished installing the part and closed the computer.



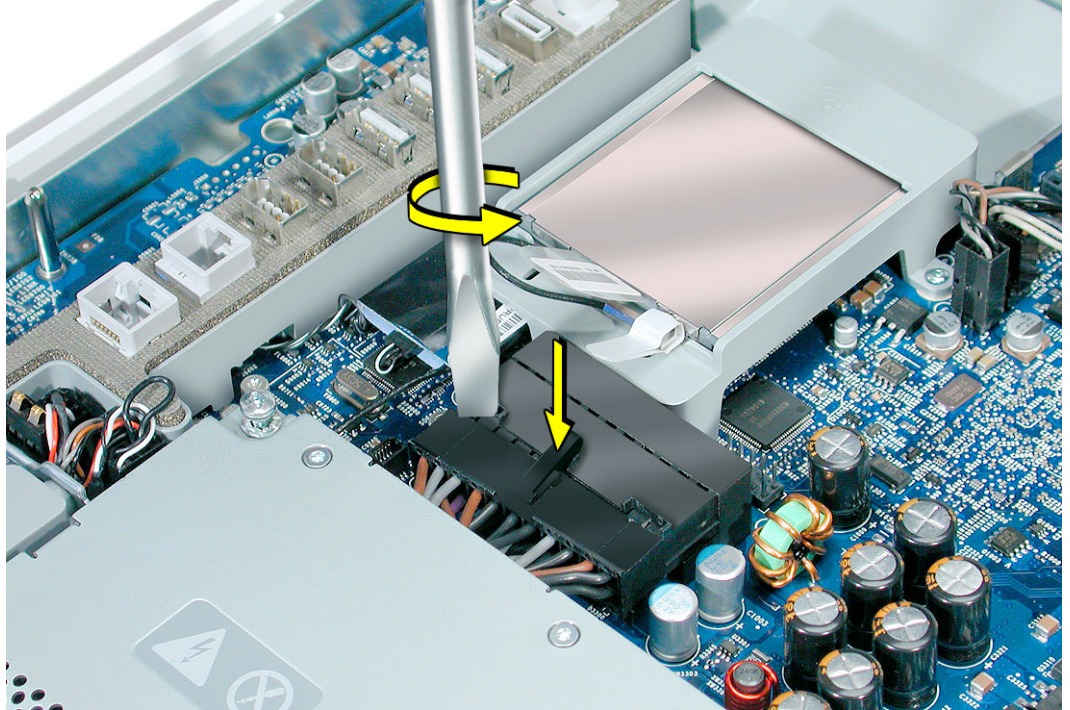
2. Locate the power supply shown in the picture below.



3. Remove the screw on the right and loosen the other two screws by turning them counterclockwise five to eight revolutions. **Note:** The middle screw and the screw on the left are captive; they will not come out of the power supply.



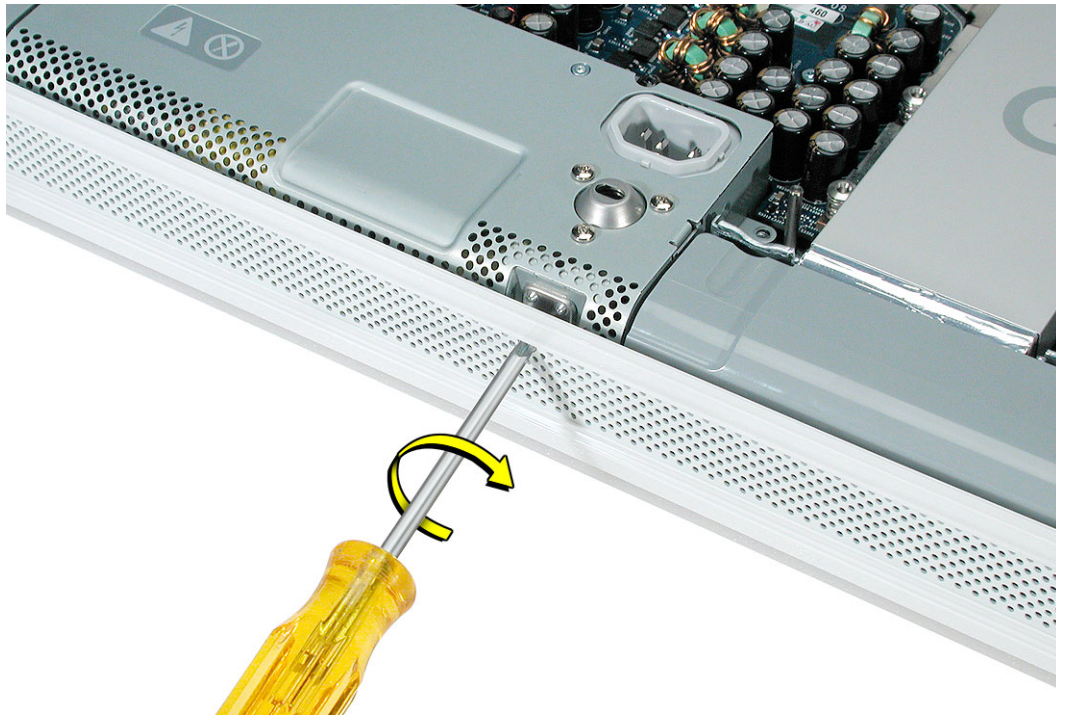
4. Disconnect the power supply cable by pressing the connector release tab and using a wide, flat blade screwdriver to pry apart the connector.



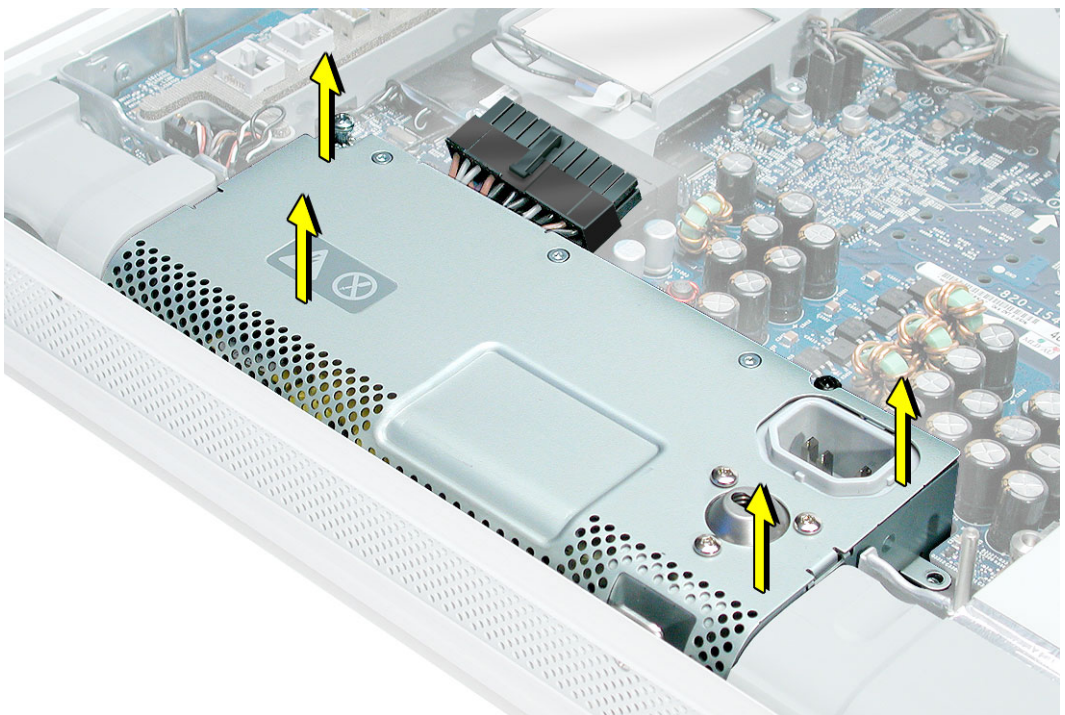
5. Pull on the connector, not on the cables.



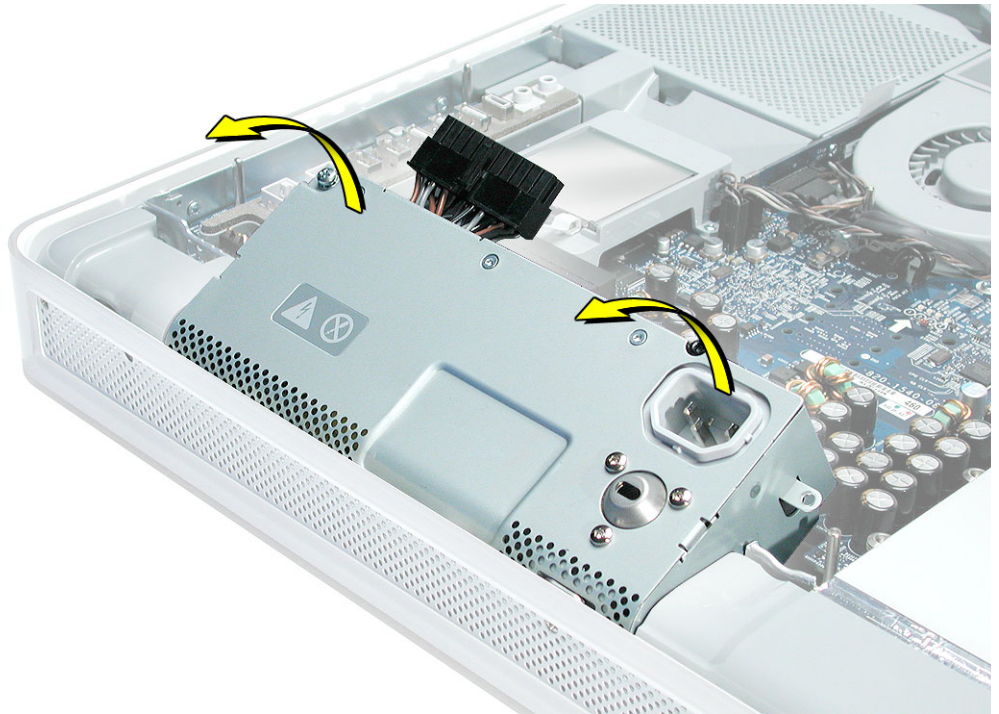
6. To unlatch the power supply, tighten the middle case screw by turning it clockwise five to eight revolutions.



7. Lift up the power supply at the sides approximately five mm or until it touches the middle case screw.



8. Tilt up the power supply until it clears the edge of the main circuit board. Lift it out of the computer and set it aside.

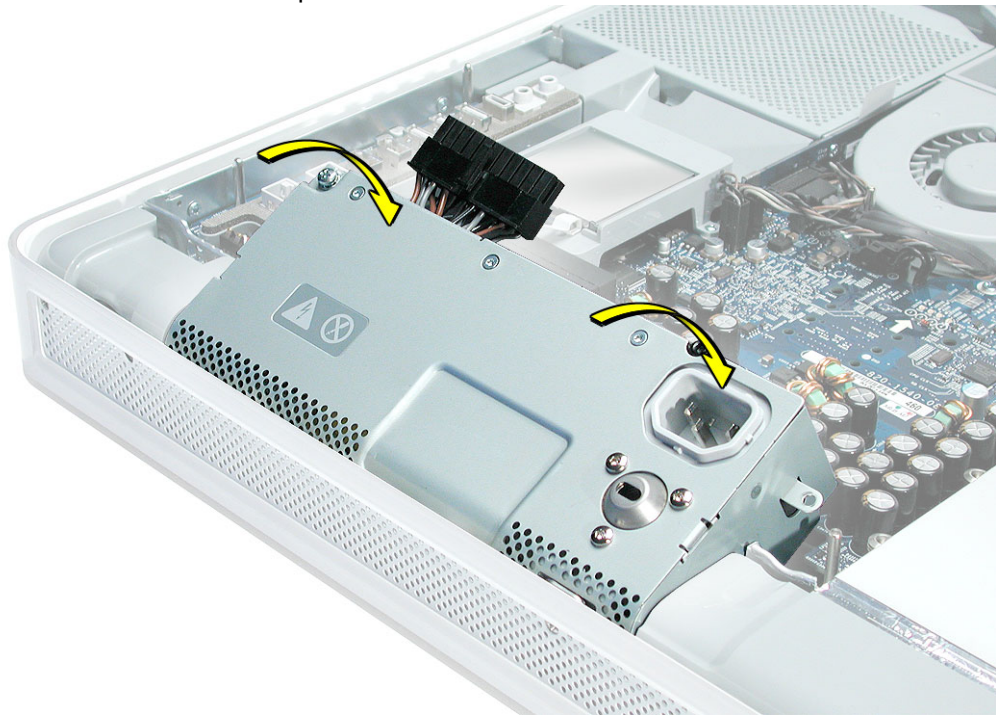


9. Return this power supply to Apple in the packaging provided.



Installing the Replacement Power Supply

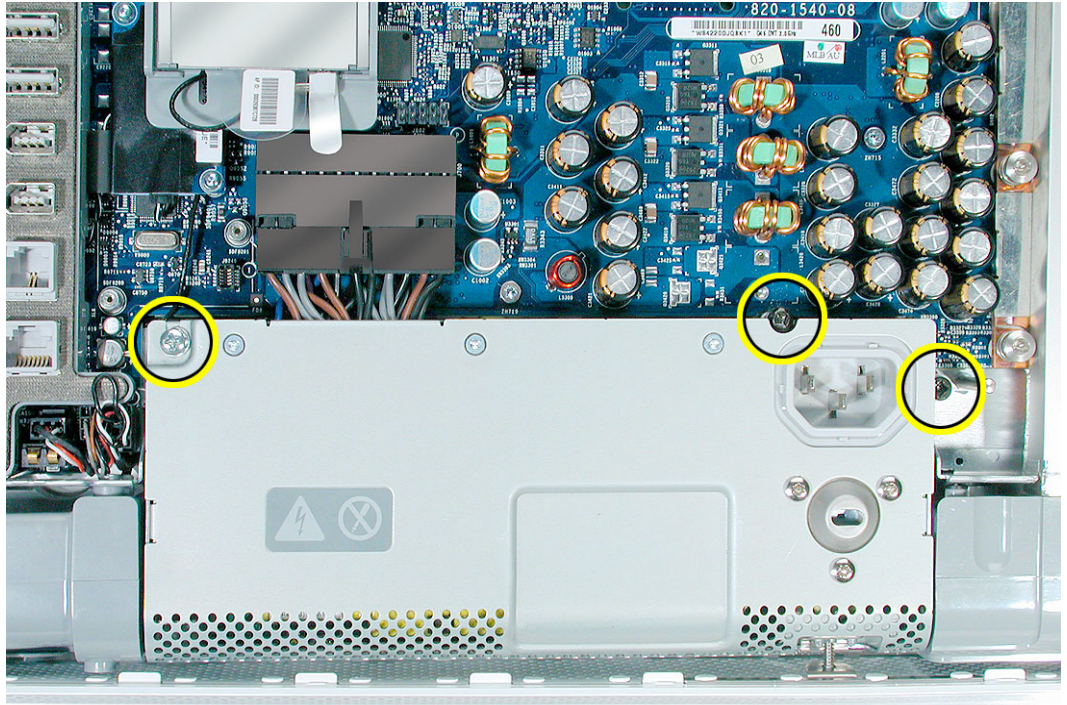
1. Remove the replacement power supply from its packaging.
2. Replace the power supply. Tilt up the power supply until it clears the edge of the main circuit board. Lower it into place.



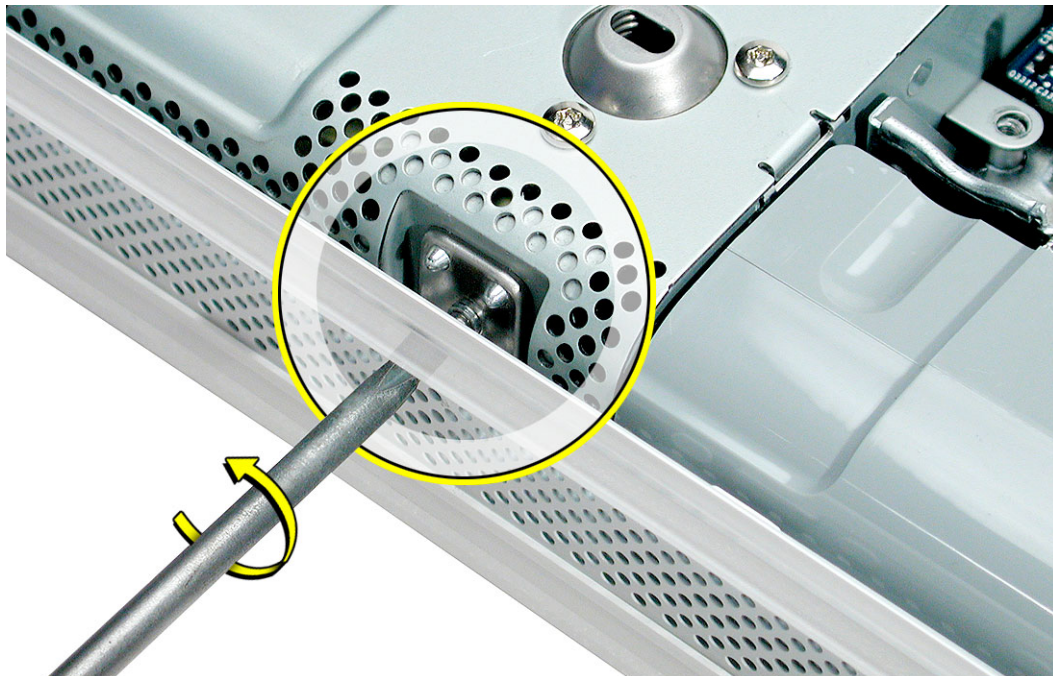
3. When the power supply is installed properly it should be flush with the gray plastic parts on the right and left sides.



4. Connect the black power supply connector and tighten the two captive screws (the middle screw and the screw on the left), turning them clockwise. Replace the remaining screw on the right.

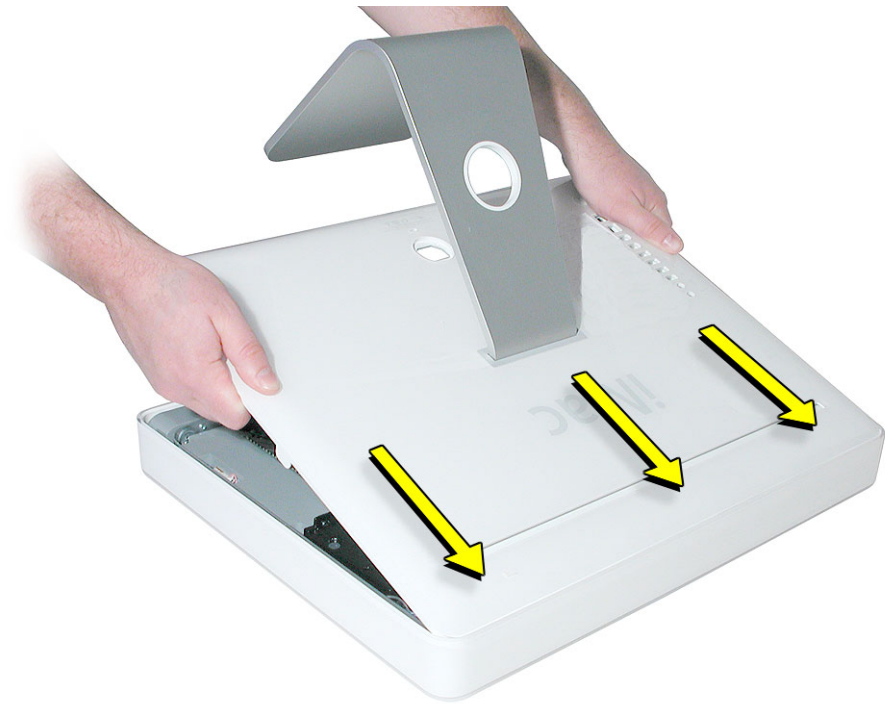


5. Turn the middle case screw counterclockwise about five revolutions. This step prepares the back cover to be installed and secured.



Closing the Computer

1. Replace the cover so that the slots on the top edge of the cover mate with the tabs on the display housing.



2. Lower and press the cover into place until it fits snugly on the computer.



3. Tighten the case screws by turning them clockwise. You might need to tighten the middle screw first, then adjust the corner screws so the case settles into the display/bezel.



4. Position the computer in the upright position. Reconnect the power cord and remaining cables. Turn on the computer.



 **Apple Computer, Inc.**

© 2004 Apple Computer, Inc. All rights reserved.

This document is protected under U.S. Copyright Law and International Treaties, and no part of this document may be reproduced in any form without written permission from Apple.

Apple is not responsible for typographical, printing, or inadvertent errors.

Apple Computer, Inc.
1 Infinite Loop
Cupertino, CA 95014-2084
USA
+ 1 408 996 1010
<http://www.apple.com>

Apple, the Apple logo, Mac, Macintosh, and the Mac logo are trademarks of Apple Computer, Inc., registered in the U.S. and other countries.