

GBJ15005 THRU GBJ1510

SINGLE-PHASE BRIDGE RECTIFIER GLASS PASSIVATED BRIDGE RECTIFIERS
 REVERSE VOLTAGE 50 to 1000 Volts FORWARD CURRENT 15 Ampere

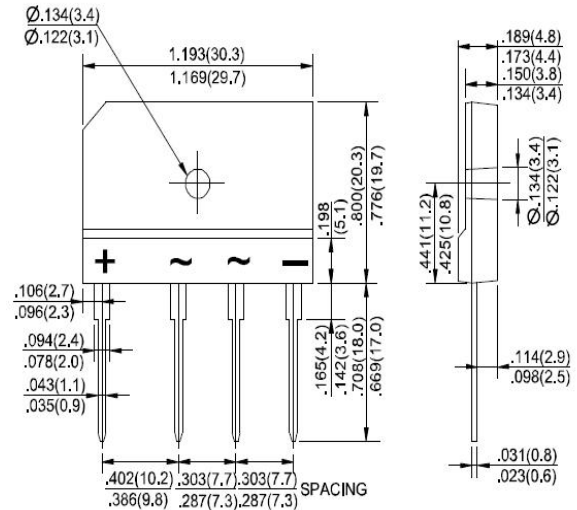
FEATURES

- ◆ Rating to 1000V PRV.
- ◆ Ideal for printed circuit board.
- ◆ Low forward voltage drop, high current capability.
- ◆ Reliable low cost construction utilizing molded plastic technique results in inexpensive product.
- ◆ The plastic material has UL flammability classification 94V-0.
- ◆ Electrically isolated base-1500 Volts

Mechanical Data

- ◆ Polarity: Symbols molded on body.
- ◆ Weight: 0.26 ounces, 7.0 grams.
- ◆ Mounting position: Any.

GBJ



Dimensions in inches and (millimeters)

MAXIMUM RATINGS AND ELECTRICAL CHARACTERISTICS

Rating at 25°C ambient temperature unless otherwise specified.

Single phase, half wave, 60Hz, resistive or inductive load. For capacitive load, derate current by 20%

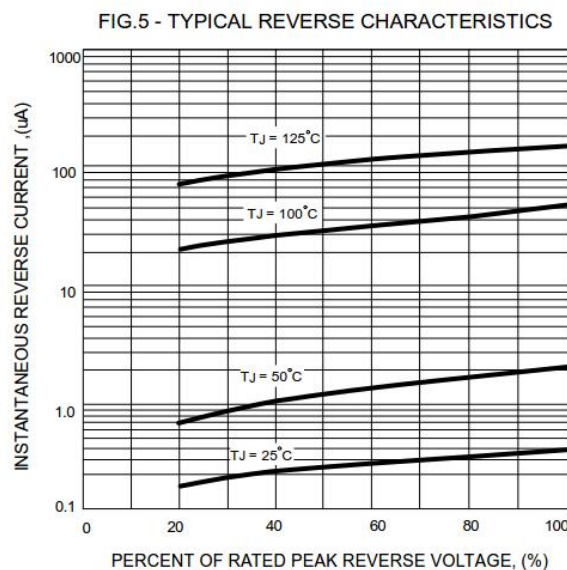
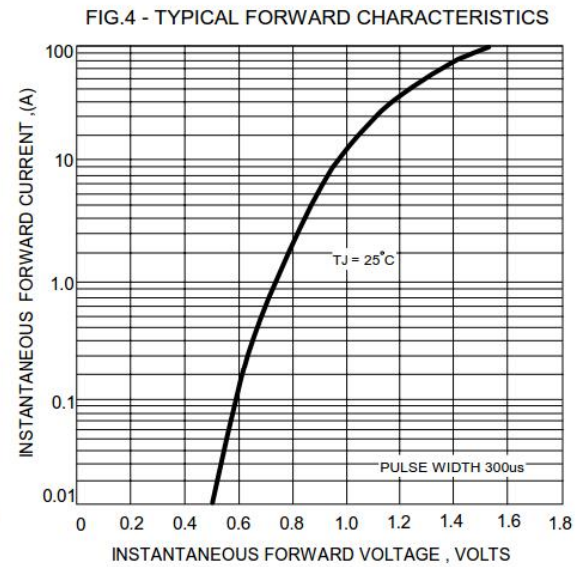
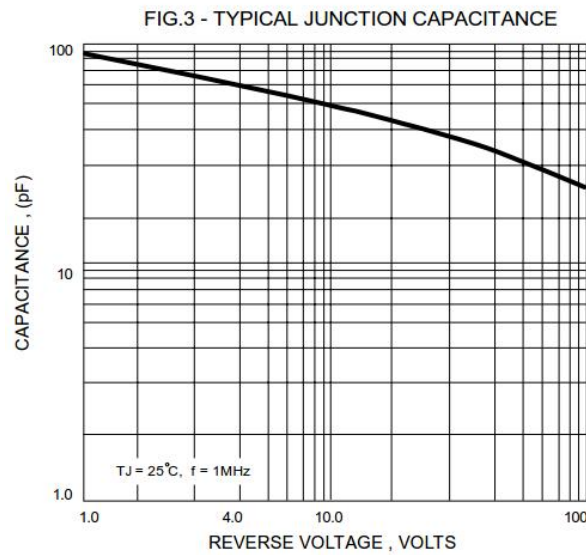
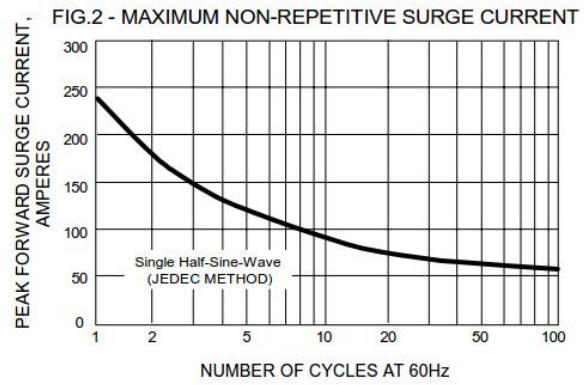
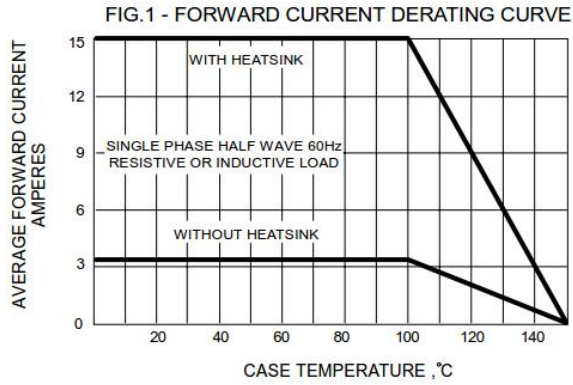
PARAMETER	SYMBOL	GBJ15005	GBJ1501	GBJ1502	GBJ1504	GBJ1506	GBJ1508	GBJ1510	UNIT
Maximum Recurrent Peak Reverse Voltage	V _{RRM}	50	100	200	400	600	800	1000	V
Maximum RMS Voltage	V _{RMS}	35	70	140	280	420	560	700	V
Maximum DC Blocking Voltage	V _{DC}	50	100	200	400	600	800	1000	V
Maximum Average Forward (with heatsink Note 2) Rectified Current @ T _C =110°C (without heatsink)	I _(AV)	15.0 3.2						A	
Peak Forward Surge Current 8.3ms single half sine-wave superimposed on rated load (JEDEC METHOD)	I _{FSM}	240						A	
Maximum forward Voltage at 7.5A DC	V _F	1.05						V	
Maximum DC Reverse Current @ T _J =25°C at Rated DC Blocking voltage @ T _J =125°C	I _R	5.0 500						µA	
I ² t Rating for fusing (t<8.3ms)	I ² t	240						A ² S	
Typical Junction Capacitance per element (Note 1)	C _J	60						pF	
Typical Thermal Resistance (Note 2)	R _{θJC}	0.8						°C/W	
Operating Temperature Range	T _J	-55 to +150						°C	
Storage Temperature Range	T _{STG}	-55 to +150						°C	

Note: 1. Measured at 1.0M Hz and applied reversed voltage of 4.0 VDC.
 2. Device mounted on 300mm x 300mm x 1.6mm Cu Plate Heatsink.

GBJ15005 THRU GBJ1510

SINGLE-PHASE BRIDGE RECTIFIER GLASS PASSIVATED BRIDGE RECTIFIER
 REVERSE VOLTAGE 50 to 1000 Volts FORWARD CURRENT 15 Ampere

RATING AND CHARACTERISTIC CURVES GBJ15005 THRU GBJ1510



Note: Specifications are subject to change without notice. For more detail and update, please visit our website.