

## FEATURES

- | Ideal For Printed Circuit Board Mounting

---

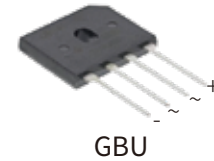
- | Built-in Printed Circuit Board Stand-offs

---

- | The Plastic Material Used Carries Underwriters Laboratory Flammability Recognition 94V-0

---

- | High Case Dielectric Strength



## MECHANICAL DATA

- | Case: Reliable Low Cost Construction Utilizing Molded Plastic Technique

---

- | Mounting Position: Any

## APPROVALS

<b>RoHS</b>	Compliance with 2011/65/EU
<b>HF</b>	Compliance with IEC61249-2-21:2003

## MAXIMUM RATINGS AND CHARACTERISTICS (T<sub>A</sub>=25°C)

Parameter	Symbol	GBU 15005	GBU 1501	GBU 1502	GBU 1504	GBU 1506	GBU 1508	GBU 1510	Unit
Marking		GBU 15005	GBU 1501	GBU 1502	GBU 1504	GBU 1506	GBU 1508	GBU 1510	
Maximum Repetitive Peak Reverse Voltage	V <sub>RRM</sub>	50	100	200	400	600	800	1000	V
Maximum RMS Voltage	V <sub>RMS</sub>	35	70	140	280	420	560	700	v
Maximum DC Blocking Voltage	V <sub>DC</sub>	50	100	200	400	600	800	1000	V
Maximum Average Forward Rectified Output Current At Tc=100°C(With Heatsink)	I <sub>F(AV)</sub>	15.0							A
Peak Forward Surge Current Single Sine-wave Superimposed On Rated Load (Jedec Method)	I <sub>FSM</sub>	220							A
Rating For Fusing ( T<8.3ms)	I <sup>2</sup> t	200							A <sup>2</sup> sec
Maximum Instantaneous Forward Voltage Drop Per Leg at 7.5A	V <sub>F</sub>	1.1							V
Maximum DC Reverse Current at rated DC Blocking Voltage Per Element	T <sub>A</sub> =25°C	10							μA
	T <sub>A</sub> =125°C	500							μA
Operating Junction and Storage Temperature Range	T <sub>J</sub> , T <sub>STG</sub>	-55 ~ +150							°C

Notes: (1) Thermal resistance from Junction to Ambient on P.C.board mounting

# CHARACTERISTIC CURVES

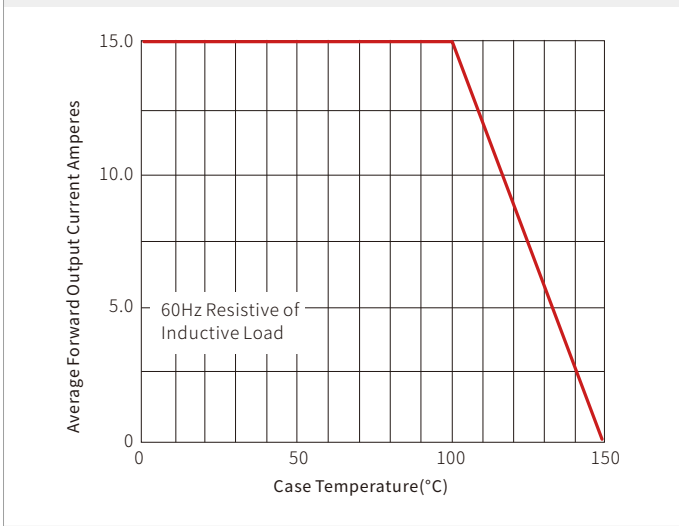
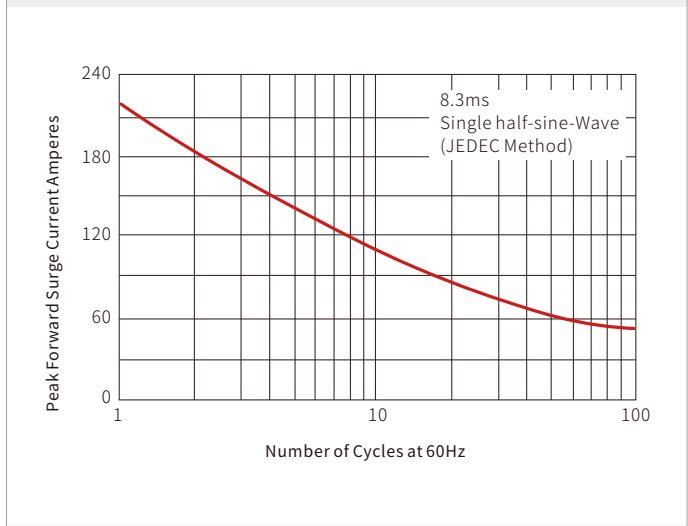
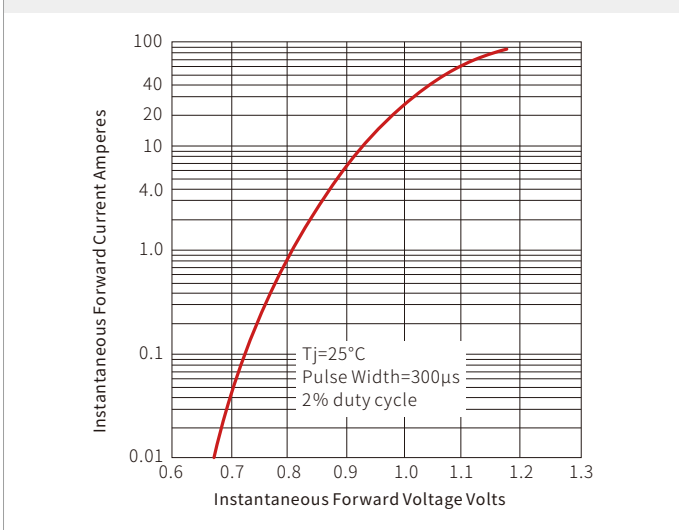
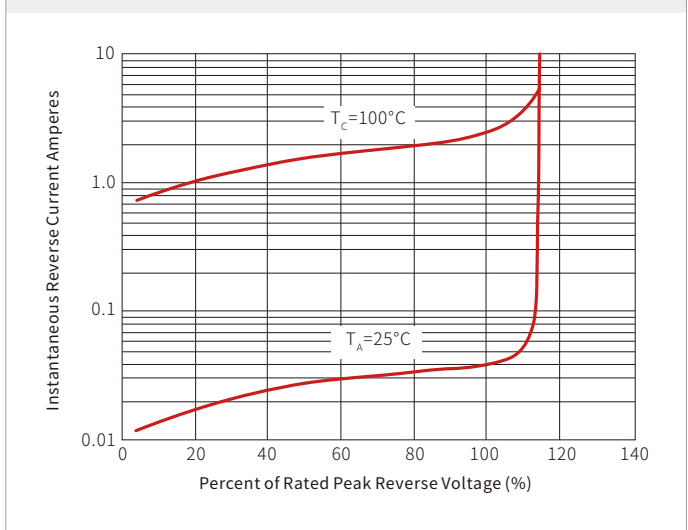
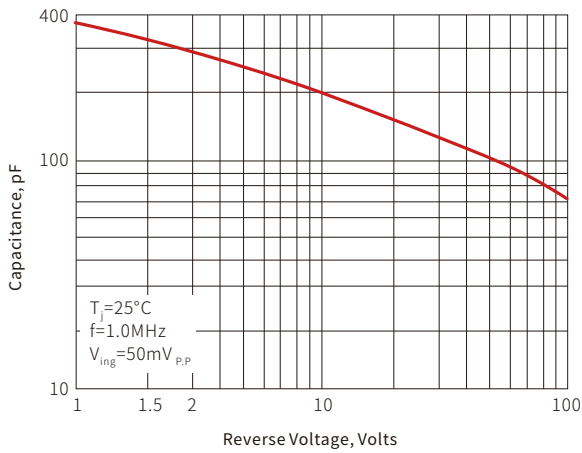
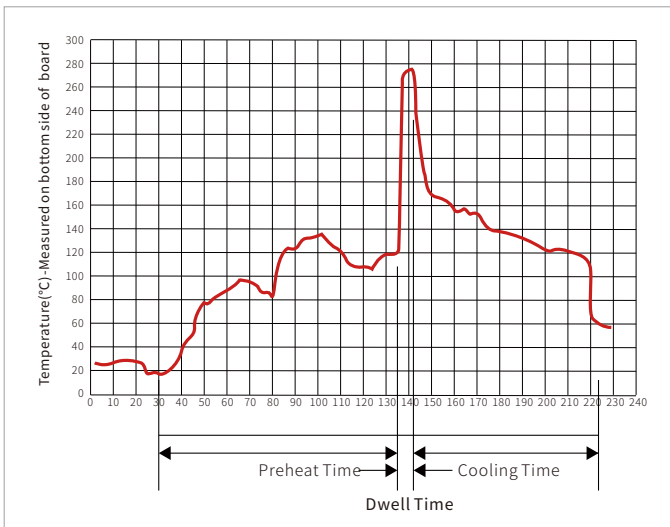
**Fig. 1-Derating Curve for Output Rectified Current**

**Fig. 2-Maximum Non-Repetitive Peak Forward Surge Current**

**Fig. 3-Typical Instantaneous Forward Characteristics**

**Fig. 4-Typical Reverse Characteristics**


Fig. 5-Typical Junction Capacitance

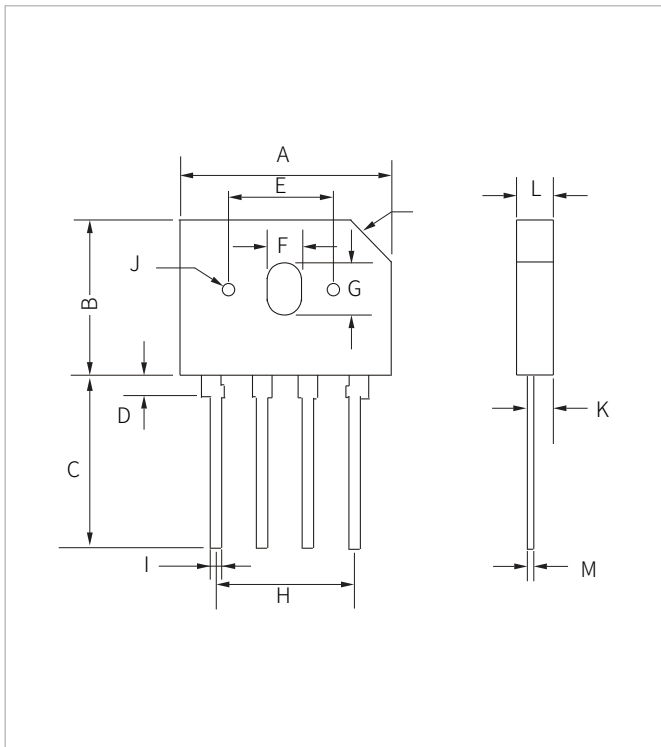


## WAVE SOLDERING



Wave Parameter		Lead-free assembly
Pre Heat	Temperature Min	100°C
	Temperature Max	150°C
	Time(min to max)	60 – 180 secs
Solder pot Temperature		280°C Max
Solder Dwell Time		2-5 seconds

## GBU PACKAGE INFORMATION



Ref.	Millimeters		Inches	
	Min.	Max.	Min.	Max.
A	21.8	22.2	0.858	0.874
B	18.4	18.8	0.724	0.740
C	17.1	17.5	0.673	0.689
D	1.80	2.40	0.071	0.094
E	14.80	15.20	0.583	0.598
F	3.60	4.00	0.142	0.157
G	5.60	6.00	0.220	0.236
H	15.04	15.44	0.592	0.608
I	0.90	1.30	0.035	0.051
J	Φ1.30	Φ1.70	Φ0.051	Φ0.067
L	3.30	3.60	0.130	0.142
K	2.40	2.60	0.094	0.102
M	0.35	0.55	0.014	0.022

## ORDERING INFORMATION

Part Number	Component Package	Per Box	Description
GBU15005-GBU1510	GBU	250PCS	Box

**Headquarters**

No.3387 Shendu Road  
Pujiang I&E Park  
Minhang Shanghai China  
201000

**Hotline**

400-021-5756

**Web**

<https://www.semiware.com>

**Sales Center**

Tel: 86-21-3463-7458  
Email: [sales18@semiware.com](mailto:sales18@semiware.com)

**Customer Service**

Tel: 86-21-5484-1001  
Email: [sales17@semiware.com](mailto:sales17@semiware.com)

**Technical Support**

Tel: 86-21-3463-7654  
Email: [fae01@semiware.com](mailto:fae01@semiware.com)

**Complaint & Suggestions**

Tel: 86-21-3463-7172  
Ext: 8868  
Email: [cs03@semiware.com](mailto:cs03@semiware.com)

**By QR Code**

Website



Wechat

To find your local partner within Semiware's global website: [www.semiware.com](http://www.semiware.com)

© 2022 Semiware Semiconductor Inc.

The content of this document has been carefully checked and understood. However, neither Semiware nor its subsidiaries assume any liability whatsoever for any errors or inaccuracies of this document and the consequences thereof. Published specifications are subject to change without notice. Product suitability for any area of application must ultimately be determined by the customer. In all cases, products must never be operated outside their published specifications. Semiware does not guarantee the availability of all published products. This disclaimer shall be governed by substantive Chinese law and resulting disputes shall be settled by the courts at the place of business of Semiware. Latest publications and a complete disclaimer can be downloaded from the Semiware website. All trademarks recognized.