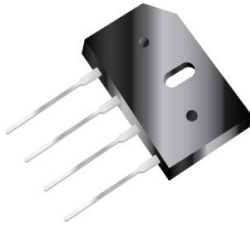




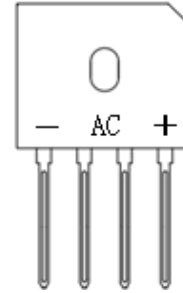
# GBU6005 Thru GBU610



## Glass Passivated Bridge Rectifier



GBU



Features
<ul style="list-style-type: none"> <li>• Glass passivated die construction</li> <li>• Low forward voltage drop</li> <li>• High current capability</li> <li>• High surge current capability</li> <li>• Plastic material-UL flammability 94V-0</li> </ul>

Mechanical Data
<ul style="list-style-type: none"> <li>• Case: GBU, molded plastic</li> <li>• Terminals: plated leads solderable per MIL-STD-202, Method 208</li> <li>• Polarity: as marked on case</li> <li>• Mounting position: Any</li> <li>• Marking: type number</li> <li>• Lead Free: For RoHS / Lead Free Version,</li> </ul>

Ordering Information		
Part No.	Package	Packing
GBU6005 Thru GBU610	GBU	250/Box

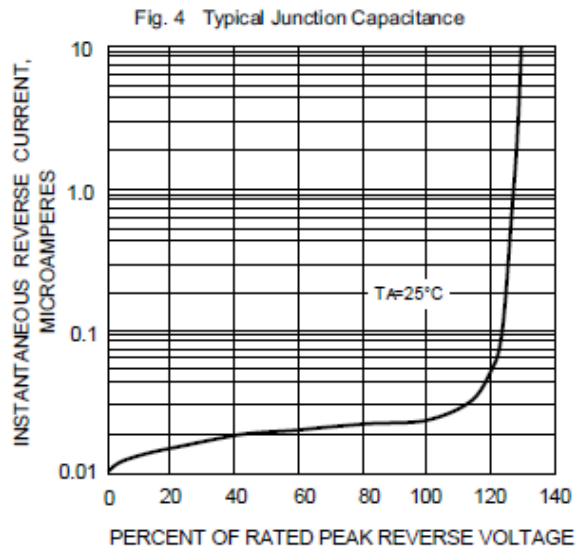
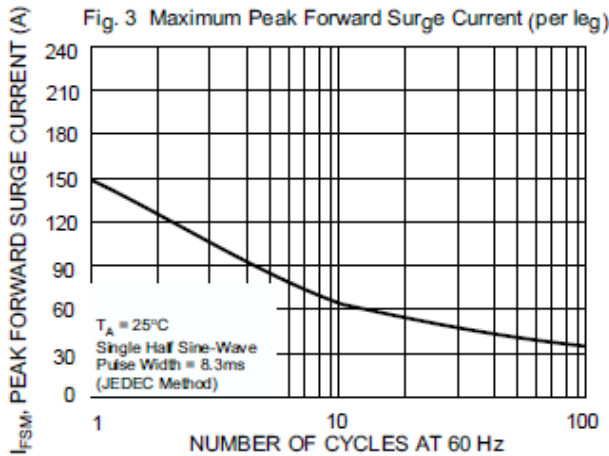
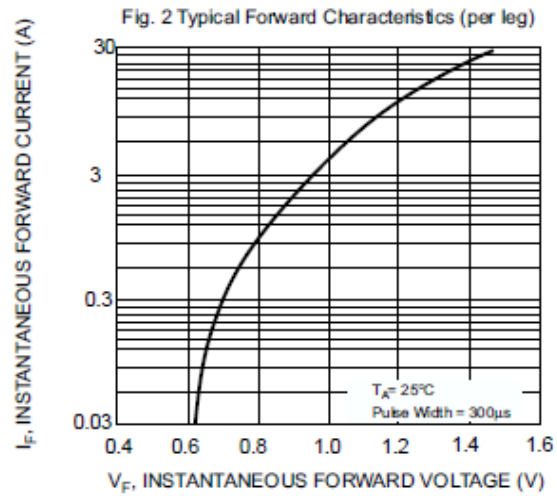
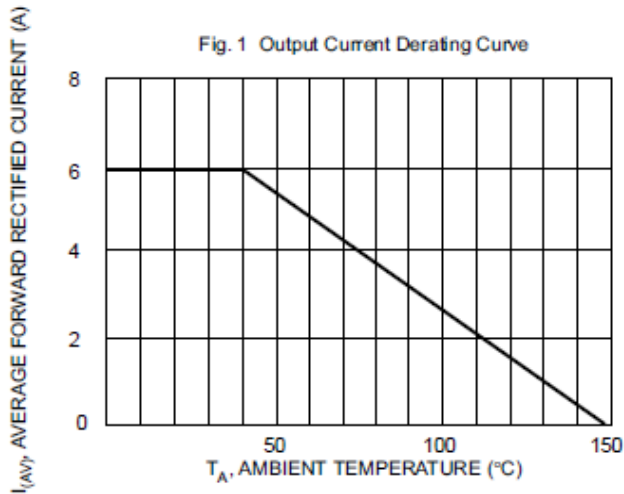
Maximum Ratings and Electrical Characteristics (TA=25°C unless otherwise noted)									
Parameter	Symbol	GBU 6005	GBU 601	GBU 602	GBU 604	GBU 606	GBU 608	GBU 610	Units
Peak Repetitive Reverse Voltage	$V_{RRM}$	50	100	200	400	600	800	1000	V
Working Peak Reverse Voltage	$V_{RWM}$								
DC Blocking Voltage	$V_{DC}$								
RMS Reverse Voltage	$V_{RMS}$	35	70	140	280	420	560	700	V
Average Rectified Output Current (Note 1) @TA=40°C	$I_O$	6.0							A
Non-Repetitive Peak Forward Surge Current 8.3ms Single half sine-wave superimposed on rated load (JEDEC Method)	$I_{FSM}$	150							A
Forward Voltage per element @IF=3A @IF=6A	$V_{FM}$	1.0 1.1							V
Peak Reverse Current @TA =25°C At Rated DC Blocking Voltage @TA =125 °C	$I_R$	5.0 500							uA
Typical Junction Capacitance per leg	$C_J$	65							pF
Typical Thermal Resistance per leg (Note 2)	$R_{\theta JA}$	17							°C/W
	$R_{\theta JL}$	2.2							
Operating and Storage Temperature Range	$T_J, T_{STG}$	-55~+150							°C
Marking		GBU 6005	GBU 601	GBU 602	GBU 604	GBU 606	GBU 608	GBU 610	

NOTES:

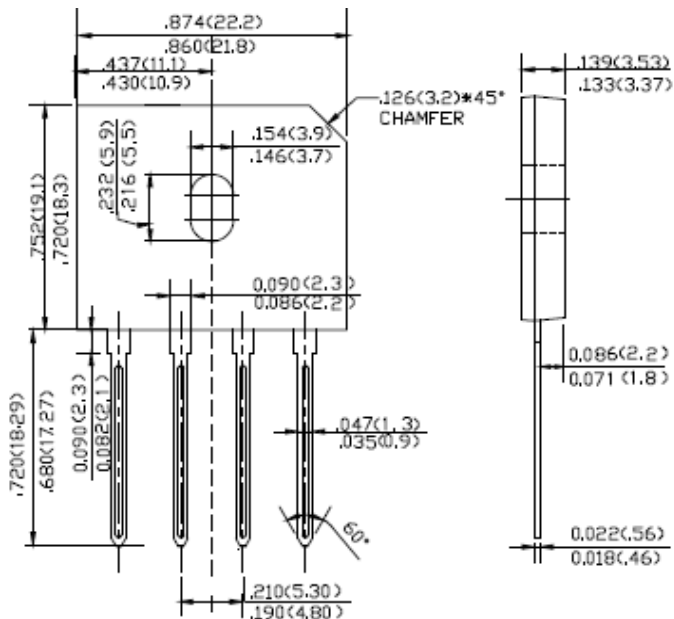
1. Mounted on glass epoxy PC board with 1.3mm<sup>2</sup> solder pad.
2. Measured at 1.0 MHz and applied reverse voltage of 4.0V D.C.



### Rating and Characteristics Curvers



### Package Outline Dimensions



**GBU**

Dimensions in inches and (millimeters)