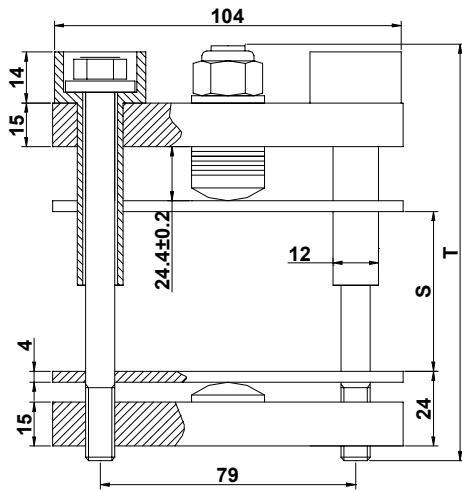


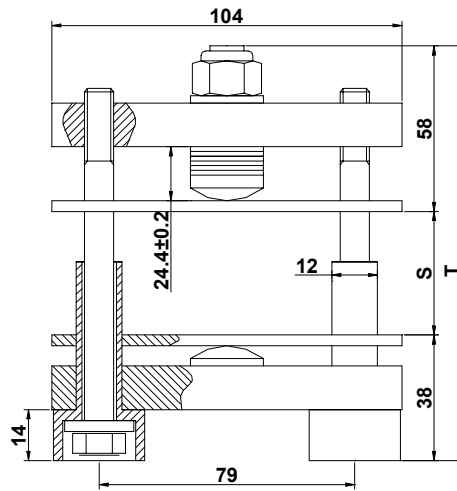
# GC79...R

## BAR CLAMP FOR HOCKEY PUKS

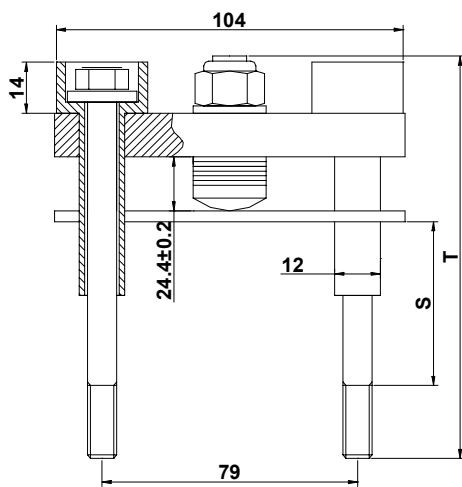
- Various lengths of bolts and insulators
- Round shaped clamping head for optimal clamping force application
- Pre-loaded to the specific clamping force
- Four clamps styles
- Gold iridite plating
- User friendly clamping force indicator
- UL94 certified insulation material



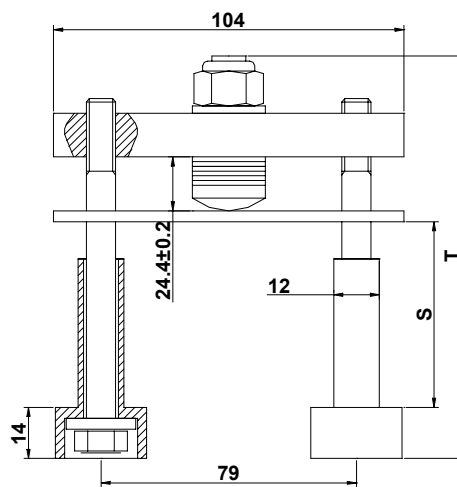
**GC79BN...R**



**GC79BR...R**




**GC79SN...R**



**GC79SR...R**

Dimensions in millimeters

T: Max total height (see table)  
S: Clearance allowed (see table)

Parameter	Unit	Types/Testing conditions/Notes	Values	
			Min	Max
Weight	g	GC79S...	550	650
		GC79B...	830	970
Clamping Force*	kN	GC79...10	10	
		GC79...12	12	
		GC79...15	15	
		GC79...20	20	
Insulation Voltage	V <sub>RMS</sub>	1 min	3000	
Insulating Material		UL File: E121562		Noryl ®
Max. working temperature	°C		110	
Min. working temperature	°C		-30	
Storage temperature	°C		-40/110	

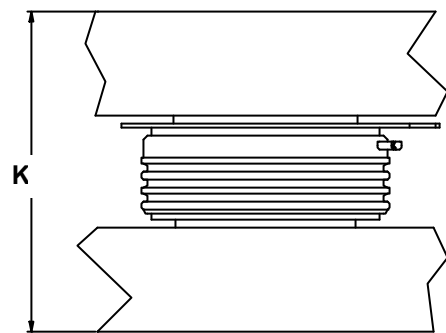
\* Other clamping forces available: contact factory

**ORDERING INFORMATION TABLE**

Clamps can be ordered using the following part numbering system



<b>(1) Construction type:</b>	B = with double bar S = with single bar
<b>(2) Insulator position:</b>	N = upper side R = lower side
<b>(3) Insulator code:</b>	see table below
<b>(4) Bolt code:</b>	see table below
<b>(5) Clamping force (in kN):</b>	10
	12
	15
	20
<b>(6) Special accessories</b>	blank = no accessories
	S = extra metal spacer
	D = pressure disc in place of pressure bar



K: Total thickness of the assembly to be clamped

For thicknesses  $S'_{Min} < K < S_{Min}$  an additional 4 mm thick metal spacer is needed ( see list of special accessories)

**Type GC79BN...: suggested insulator/bolt types**

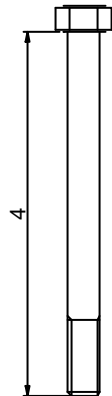
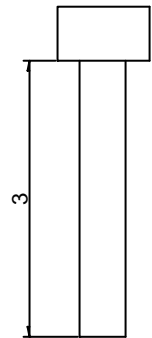
Allowed clearance S			Insulator choice		Bolt choice		Max height
S' Min [mm]**	S Min [mm]	SMax [mm]	(3)	Ins. Lenght [mm]	(4)	Bolt Lenght [mm]	T [mm]
28	32	39	B	70	A	110	120
38	42	49	B	70	B	120	130
48	52	59	B/C	70/95**	C	130	140
58	62	69	C	95	D	140	150
68	72	79	C	95	E	150	160
78	82	89	D	120	F	160	170

\*\* with additional metal spacer only

**Type GC79BR...: suggested insulator/bolt types**

Allowed clearance S			Insulator choice		Bolt choice		Max height
S' Min [mm]**	S Min [mm]	SMax [mm]	(3)	Ins. Lenght [mm]	(4)	Bolt Lenght [mm]	T [mm]
28	32	39	A	50	A	110	134
38	42	49	A	50	B	120	144
48	52	59	A/B	50/70	C	130	154
58	62	69	B	70	D	140	164
68	72	79	B/C	70/95	E	150	174
78	82	89	C	95	F	160	184

\*\* with additional metal spacer only

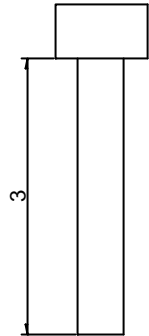


In the interest of product improvement Green Power Semiconductors reserves the right to change any specification given in this data sheet without notice.

**Type GC79SN...: suggested insulator/bolt types**

Allowed clearance S			Insulator choice		Bolt choice		Max height
S' Min[mm]**	S Min [mm]	SMax [mm]	(3)	Ins. Lenght [mm]	(4)	Bolt Lenght [mm]	T [mm]
37	41	48	B	70	A	110	120
47	51	58	B	70	B	120	130
57	61	68	B/C	70/95	C	130	140
67	71	78	C	95	D	140	150
77	81	88	C/D	95/120	E	150	160
87	91	98	D	120	F	160	170

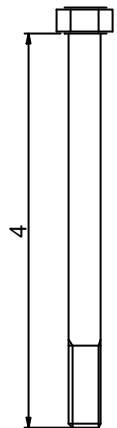
\*\* with additional metal spacer only



**Type GC79SR...: suggested insulator/bolt types**

Allowed clearance S			Insulator choice		Bolt choice		Max height
S' Min[mm]**	S Min [mm]	SMax [mm]	(3)	Ins. Lenght [mm]	(4)	Bolt Lenght [mm]	T [mm]
52	56	63	A	50	A	110	134
62	66	73	A	50	B	120	144
72	76	83	A/B	50/70	C	130	154
82	86	93	B	70	D	140	164
92	96	103	B/C	70/95	E	150	174
102	106	113	C	95	F	160	184

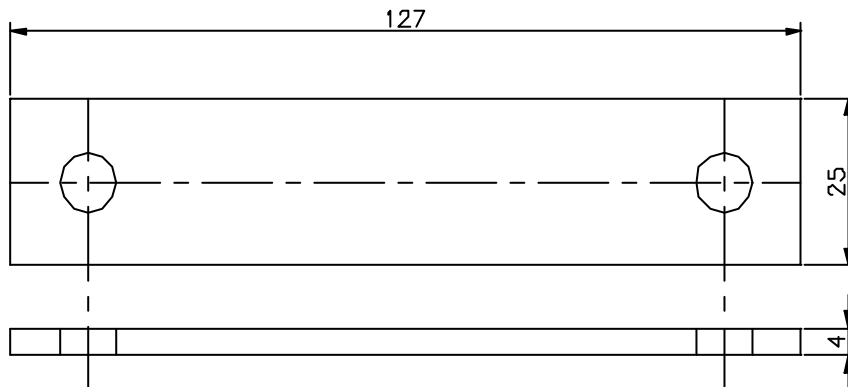
\*\* with additional metal spacer only



**SPECIAL ACCESSORIES**

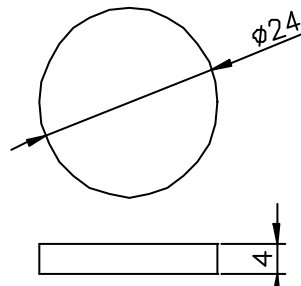
The following special accessories are available

**Metal spacer**



**Pressure disc**

Suggested groove diameter 27mm +/- 0.5



In the interest of product improvement Green Power Semiconductors reserves the right to change any specification given in this data sheet without notice.