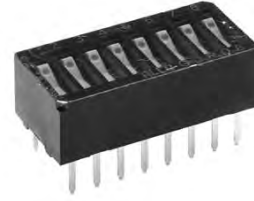


GDR Series, Recesses Rocker Actuator, THT & SMT

DIP Switches

Features

- Bifurcated gold wiping contact system (gold to gold contact system)
- Available in pc and surface mount configuration
- Tape seal standard
- Shipped in the OFF position, ON position on request



Typical performance characteristics

Contact configuration SPST
 Contact rating, non-switching. 100 mA @ 50 VDC
 Contact rating, switching 25 mA @ 24 VDC
 Electrical life. 1,000 cycles
 Mechanical life. 1,000 cycles
 Contact resistance max 100 mOhm
 Insulation resistance min 100 MOhm
 Dielectric strength 300 VAC for 1 min
 Actuation force 6 N (600 gf) max

Environmental specification

Operating temperature -35 to +85°C
 Storage temperature -45 to +100°C
 Solder heat resistance 265°C/10s wave or 260°C/10s reflow

Material specifications

Contacts copper alloy gold finish
 Actuator lcp
 Terminals copper alloy gold finish
 Base pps
 Cover pps
 Tape seal polyimide film
 RoHS Directive 2002/95/EC compliant

Product key

Typical product key

GDR 06 S 04

Type

GDR DIP switch with recessed rocker actuator

Positions

02 2 positions	08 8 positions
04 4 positions	10 10 positions
06 6 positions	

Terminal

blank through hole - THT
S surface mount - SMT

Material

04 RoHS compliant

GDR Series, Recesses Rocker Actuator, THT & SMT (Continued)

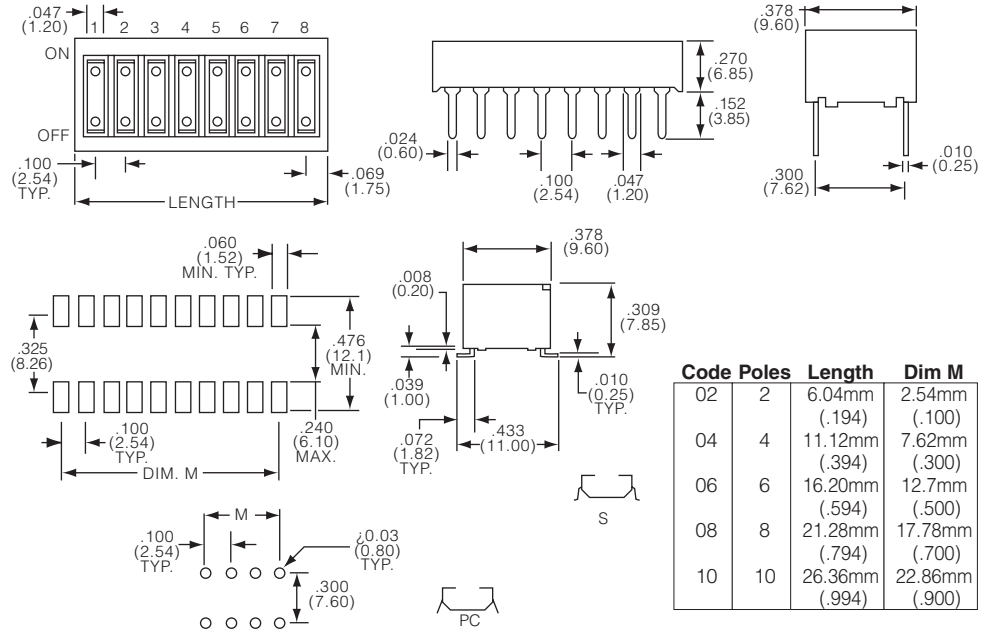
Positions



Codes 02, 04, 06, 08, 10 2, 4, 6, 8 and 10 positions



GDR0804



Code	Poles	Length	Dim M
02	2	6.04mm (.194)	2.54mm (.100)
04	4	11.12mm (.394)	7.62mm (.300)
06	6	16.20mm (.594)	12.7mm (.500)
08	8	21.28mm (.794)	17.78mm (.700)
10	10	26.36mm (.994)	22.86mm (.900)

Product key	Positions	Terminal	Material	Part Number
GDR0204	2 positions	THT	RoHS	1825286-1
GDR02S04		SMT	compliant	1825286-2
GDR0404	4 positions	THT		1825286-3
GDR04S04		SMT		1825286-4
GDR0604	6 positions	THT		1825286-5
GDR06S04		SMT		1825286-6
GDR0804	8 positions	THT		1825286-7
GDR08S04		SMT		1825286-8
GDR1004	10 positions	THT		1825286-9
GDR10S04		SMT		1-1825286-0

Preferred parts in bold print

DIP Switches