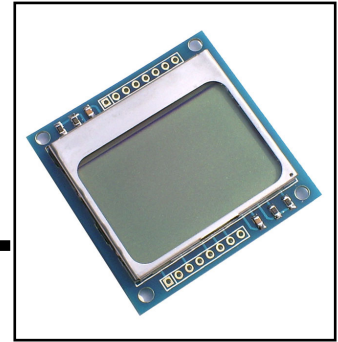


GLCD5110

Graphic LCD 84x48 pixel



Technical features

- Graphic LCD module # LPH7366. Resolution is 84 x 48 pixel.
- Built-in PCD8544 controller with SPI interface bus.
- Built-in the backlight blue LED controlled by software
- Supply voltage range is +3 to +3.3V. Maximum current is 10mA (with backlight LED)
- Display the standard size 5x7 pixel character up to 14 characters 6 lines and mono-tone graphic image.
- Size is 4.5 x 4.5 cm.
- Easy to connection
- Interface with any popular microcontroller.

- If interface with +3V logic system, user can connect GLCD with microcontroller port directly.

- If interface with +5V system, user must connect through the attenuator circuit for reduce the logic level from +5V to +3 or +3.3V or not over the supply voltage of GLCD5110.

The figure 1 shows size and pin assignment of GLCD5110.

The figure 2 shows the interfacing circuit with the microcontroller and figure 3 shows the simple attenuator circuit for interfacing GLCD5110 with +5V microcontroller system.

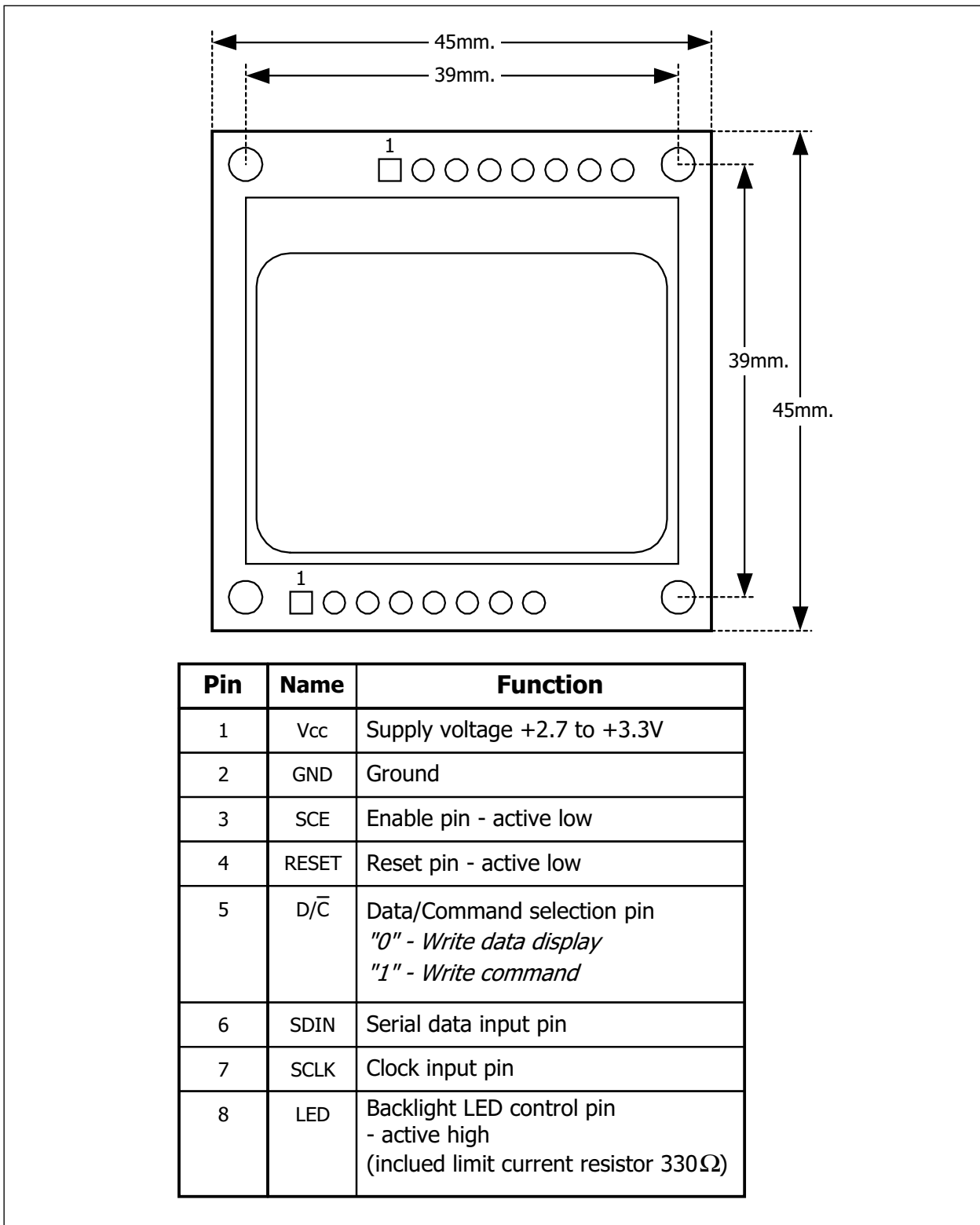


Figure 1 - Size and Pin assignment of GLCD5110 module

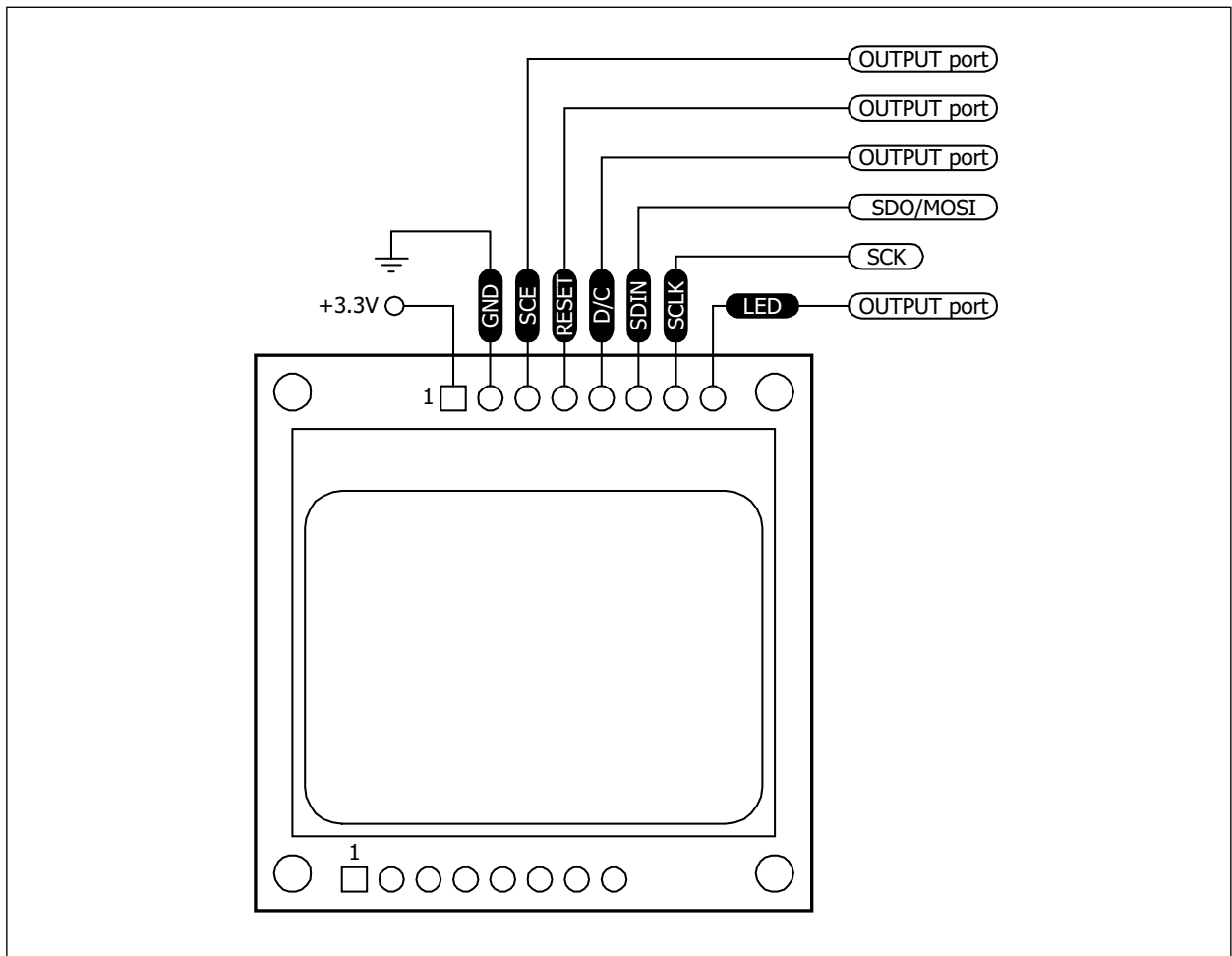


Figure 2 - How to interface GLCD5110 with microcontroller

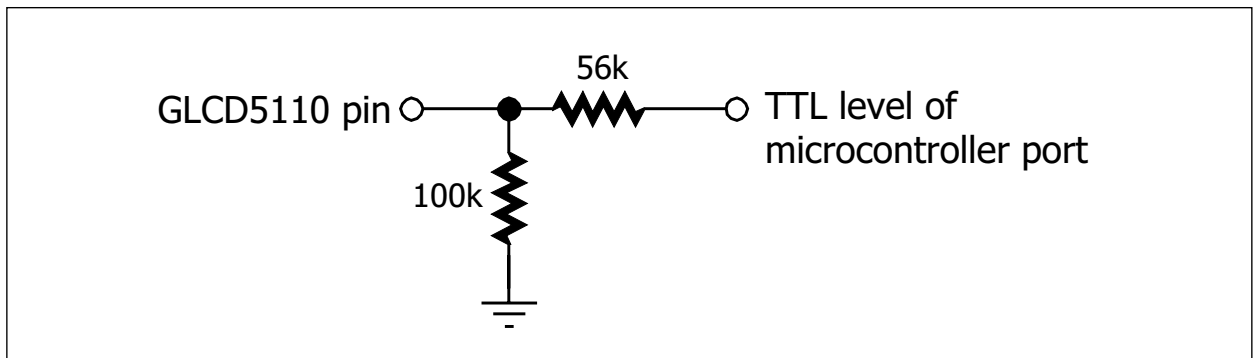


Figure 3 - The example attenuator circuit for reducing voltage from +5V TTL logic to +3.3V for interfacing with GLCD5110 module

GLCD5110 library

INEX provides the library of C programming for LPC2148 microcontroller and some technical information for free downloading at www.inexglobal.com.



Innovative Experiment Co.,Ltd.

3133/53 Soi Sukhumvit 101/2, Sukhumvit rd., Bangna, Bangkok 10260

URL : www.inexglobal.com e-mail : tech@inexglobal.com