

GN 417

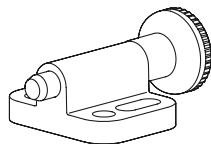
Indexing plungers

- **Body**
Zinc die-casting, plastic coated, black colour, textured finish.
- **Plunger**
AISI 303 stainless steel.
- **Spring**
AISI 301 stainless steel.
- **Lifting ring**
AISI 301 stainless steel.
- **Knob**
Technopolymer, black colour, matte finish, not removable.
- **Standard executions available**
 - Execution **A**: with lifting ring.
 - Execution **B**: with knob.

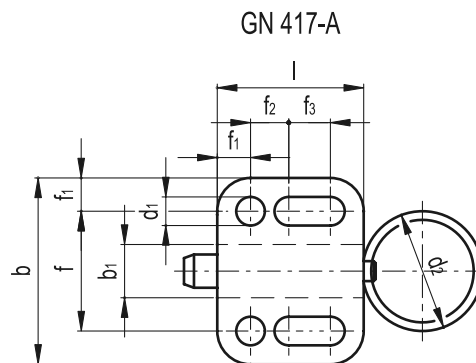
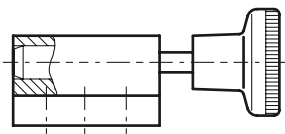


Features and applications

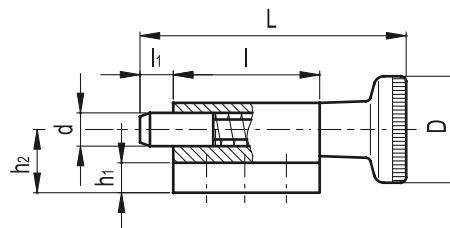
The screwing range is chosen in such a way that washers ISO 7092 can be used.



Plunger out of gear



GN 417-B



Standard Elements	Main dimensions															Spring pressure	
	Description	$d_{+0.03/+0.08}$	L	$d1_{-0.2}$	$d2$	D	l	$l1_{min.}$	b	$b1$	$h1$	$h2$	$f_{\pm 0.5}$	$f1$	$f2$	$f3$	Preload [N~]
GN 417-4-A	4	-	3.3	14	-	16.5	4	22	6	4	7	14	4	8	4.5	3	12
GN 417-5-A	5	-	4.3	18	-	22	5	28	8	4.5	9.5	18	5	10	7	5	24
GN 417-6-A	6	-	5.4	24	-	27.5	6	32	10	5	10.5	21	5.5	12	10	5	21
GN 417-8-A	8	-	5.4	30	-	33	8	34	12	6	12.5	23	5.5	12	15.5	6	22
GN 417-4-B	4	30.5	3.3	-	12	16.5	4	22	6	4	7	14	4	8	4.5	3	12
GN 417-5-B	5	40	4.3	-	16	22	5	28	8	4.5	9.5	18	5	10	7	5	24
GN 417-6-B	6	49	5.4	-	18	27.5	6	32	10	5	10.5	21	5.5	12	10	5	21
GN 417-8-B	8	59	5.4	-	21	33	8	34	12	6	12.5	23	5.5	12	15.5	6	22