

GP2A200LCS

Light Modulation, Reflective Type Photointerrupter

■ Features

1. Light modulation type which is free from external disturbing light
2. Long focal distance type (Detecting range : 5 to 15mm)
3. Compact type

■ Applications

1. Copiers
2. Facsimiles
3. Laser beam printers

■ Absolute Maximum Ratings

(Ta=25°C)

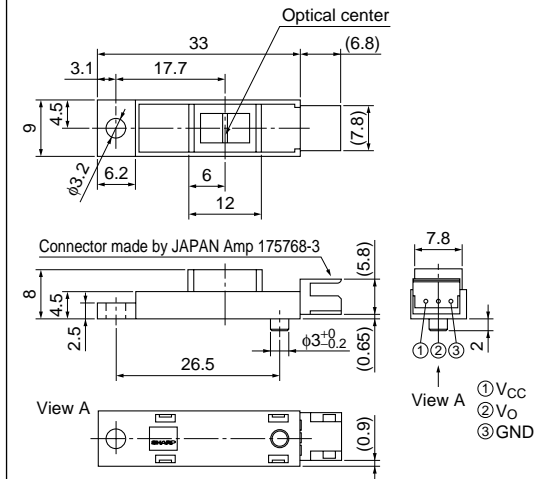
Parameter	Symbol	Rating	Unit
Supply voltage	V _{CC}	-0.5 to +7	V
Output voltage	V _O	30	V
*1 Output current	I _{OL}	50	mA
Operating temperature	T _{opr}	-10 to +70	°C
*2 Storage temperature	T _{stg}	-20 to +80	°C

*1 Sink current refer to Fig.5

*2 The connector should be plugged in/out at normal temperature

■ Outline Dimensions

(Unit : mm)

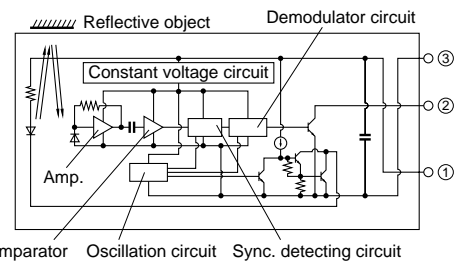


* () : Reference dimensions

* Unspecified tolerances shall be as follows.

Dimensions(d)	Tolerance
d<6.0	±0.2
6.0<=d<14.0	±0.3
14.0<=d	±0.4

Internal connection diagram



* "OPIC" (Optical IC) is a trademark of the SHARP Corporation.

An OPIC consists of a light-detecting element and signal-processing circuit integrated onto a single chip.

■ Electro-optical Characteristics

(Ta=25°C)

Parameter	Symbol	Conditions	MIN.	TYP.	MAX.	Unit
Supply voltage	V _{CC}	—	4.75	—	5.25	V
Dissipation current (I)	I _{CC}	V _{CC} =5V, R _L =∞, smoothing value	—	—	30	mA
Dissipation current (II)	I _{CCP}	*3 V _{CC} =5V, peak pulse value	—	—	150	mA
Low level output voltage	V _{OL}	V _{CC} =5V, I _{OL} =16mA, at detecting time	—	—	0.4	V
High level output voltage	V _{OH}	V _{CC} =5V, R _L =1kΩ, at non-detecting time	4.5	—	—	V
Non-detecting distance	LLHL	*4 Kodak 90% reflective paper, V _{CC} =5V	—	—	90.0	mm
Detecting distance	LHLS	*4 Kodak 90% reflective paper, V _{CC} =5V	—	—	2.0	mm
	LHLS	*4 Black paper, V _{CC} =5V	—	—	5.0	mm
	LHLL	*4 Kodak 90% reflective paper, V _{CC} =5V	22.0	—	—	mm
	LHLL	*4 Black paper, V _{CC} =5V	15.0	—	—	mm
Response time	t _{PHL}	*5 V _{CC} =5V	—	—	1.0	ms
	t _{PLH}	*5 V _{CC} =5V	—	—	1.0	ms
External disturbing light illuminance	EV1	*6	3 000	—	—	lx
	EV2	*6	1 500	—	—	lx

*3 Refer to Fig.1

*4 Refer to Fig.2

*5 Refer to Fig.3

*6 Refer to Fig.4

Fig.1 Test Condition for Peak Pulse Value I_{CCP}

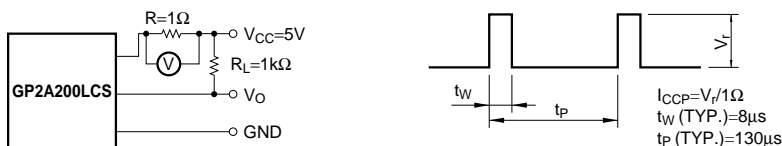


Fig.2 Test Condition for Detecting Distance Characteristics

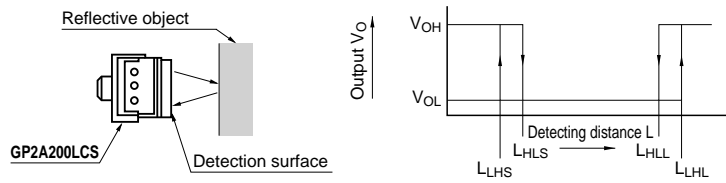


Fig.3 Test Circuit For Response Time

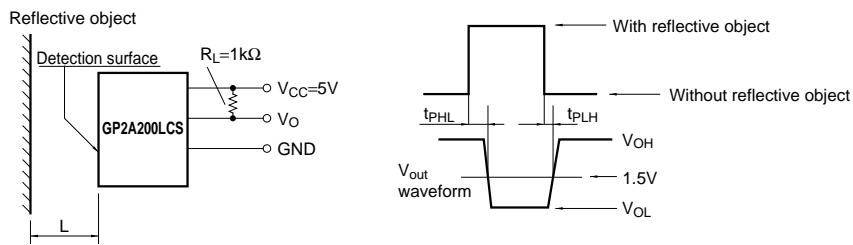


Fig.4 Test Condition for External Disturbing Light Illuminance

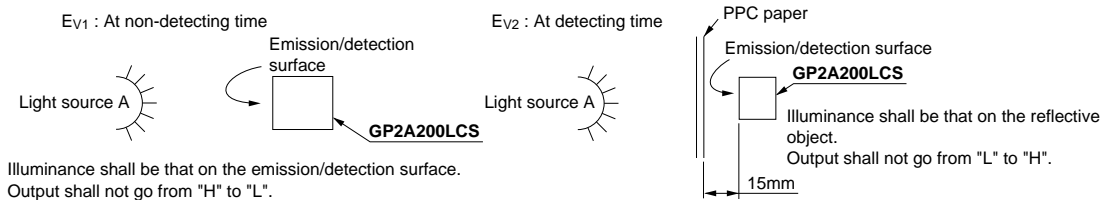


Fig.5 Output Current vs. Ambient Temperature

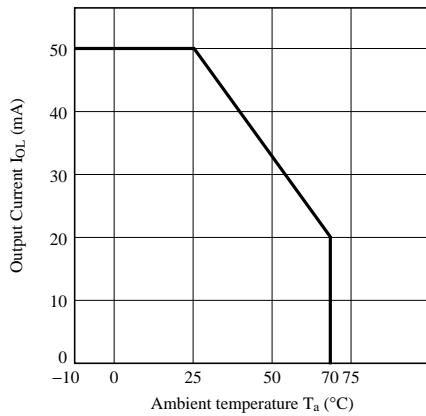


Fig.6 Low Level Output Voltage vs. Ambient Temperature

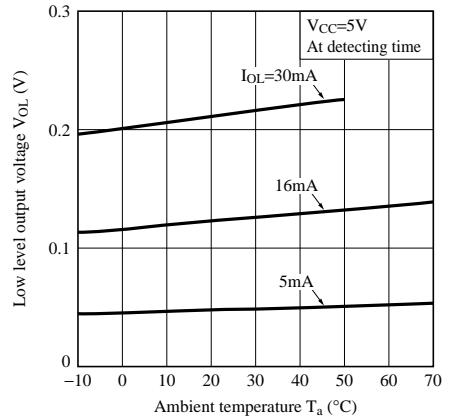


Fig.7 Low Level Output Voltage vs. Low Level Output Current

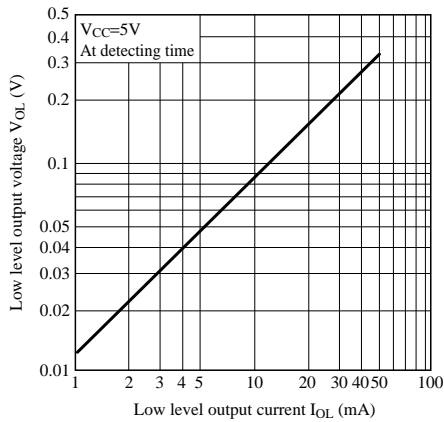
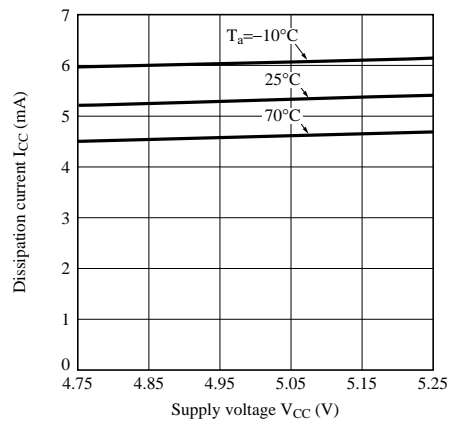


Fig.8 Dissipation Current (Smoothing Value) vs. Ambient Temperature



■ Precautions for Use

1. In order to stabilize power supply line, connect a by-pass capacitor of more than 0.33 μ F between V_{CC} and GND near the device.
2. For cleaning
Acrylic resin is used as the material of the lens surface. As to cleaning, this refractive type photointerrupter shall not clean by cleaning materials absolutely. Dust and stain shall clean by air blow, or shall clean by soft cloth soaked in washing materials.
3. The connector should be plugged in / out at normal temperature.
4. As for other general precautions, refer to the chapter "Precautions for Use".

NOTICE

- The circuit application examples in this publication are provided to explain representative applications of SHARP devices and are not intended to guarantee any circuit design or license any intellectual property rights. SHARP takes no responsibility for any problems related to any intellectual property right of a third party resulting from the use of SHARP's devices.
- Contact SHARP in order to obtain the latest device specification sheets before using any SHARP device. SHARP reserves the right to make changes in the specifications, characteristics, data, materials, structure, and other contents described herein at any time without notice in order to improve design or reliability. Manufacturing locations are also subject to change without notice.
- Observe the following points when using any devices in this publication. SHARP takes no responsibility for damage caused by improper use of the devices which does not meet the conditions and absolute maximum ratings to be used specified in the relevant specification sheet nor meet the following conditions:
 - (i) The devices in this publication are designed for use in general electronic equipment designs such as:
 - Personal computers
 - Office automation equipment
 - Telecommunication equipment [terminal]
 - Test and measurement equipment
 - Industrial control
 - Audio visual equipment
 - Consumer electronics
 - (ii) Measures such as fail-safe function and redundant design should be taken to ensure reliability and safety when SHARP devices are used for or in connection with equipment that requires higher reliability such as:
 - Transportation control and safety equipment (i.e., aircraft, trains, automobiles, etc.)
 - Traffic signals
 - Gas leakage sensor breakers
 - Alarm equipment
 - Various safety devices, etc.
 - (iii) SHARP devices shall not be used for or in connection with equipment that requires an extremely high level of reliability and safety such as:
 - Space applications
 - Telecommunication equipment [trunk lines]
 - Nuclear power control equipment
 - Medical and other life support equipment (e.g., scuba).
- Contact a SHARP representative in advance when intending to use SHARP devices for any "specific" applications other than those recommended by SHARP or when it is unclear which category mentioned above controls the intended use.
- If the SHARP devices listed in this publication fall within the scope of strategic products described in the Foreign Exchange and Foreign Trade Control Law of Japan, it is necessary to obtain approval to export such SHARP devices.
- This publication is the proprietary product of SHARP and is copyrighted, with all rights reserved. Under the copyright laws, no part of this publication may be reproduced or transmitted in any form or by any means, electronic or mechanical, for any purpose, in whole or in part, without the express written permission of SHARP. Express written permission is also required before any use of this publication may be made by a third party.
- Contact and consult with a SHARP representative if there are any questions about the contents of this publication.