

DATA SHEET



GPR23L3211E

32M-Bit Page Mode Mask Rom

DEC. 25, 2009

Version 1.2

GENERALPLUS TECHNOLOGY INC. reserves the right to change this documentation without prior notice. Information provided by GENERALPLUS TECHNOLOGY INC. is believed to be accurate and reliable. However, GENERALPLUS TECHNOLOGY INC. makes no warranty for any errors which may appear in this document. Contact GENERALPLUS TECHNOLOGY INC. to obtain the latest version of device specifications before placing your order. No responsibility is assumed by GENERALPLUS TECHNOLOGY INC. for any infringement of patent or other rights of third parties which may result from its use. In addition, GENERALPLUS products are not authorized for use as critical components in life support devices/ systems or aviation devices/systems, where a malfunction or failure of the product may reasonably be expected to result in significant injury to the user, without the express written approval of Generalplus.

Table of Contents

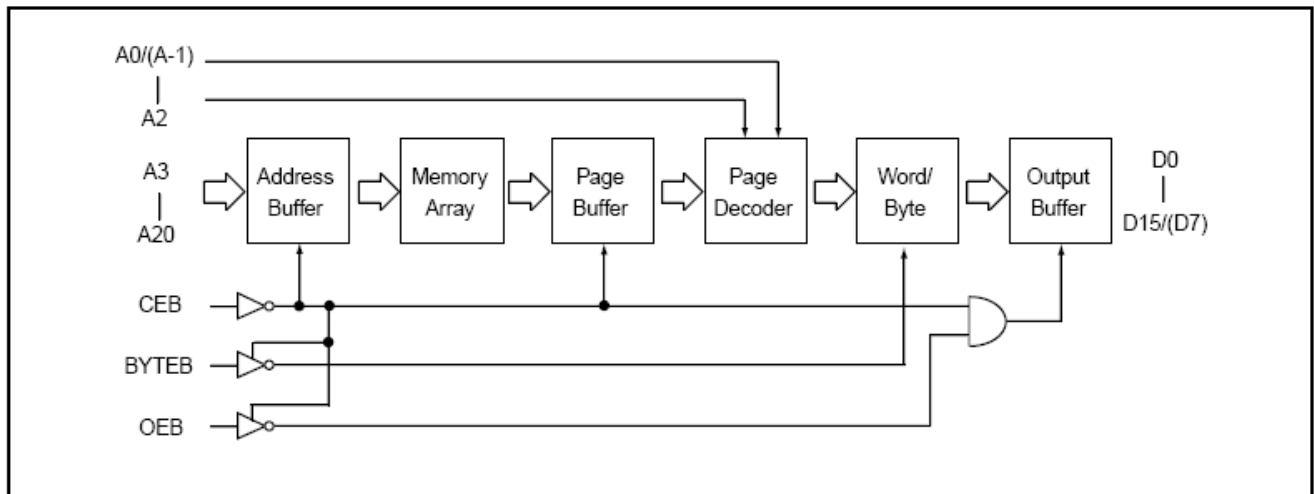
	<u>PAGE</u>
1. FEATURES	3
2. BLOCK DIAGRAM	3
3. PIN DESCRIPTION	4
3.1. PAD ASSIGNMENT	4
4. MODE SELECTION	5
5. ELECTRICAL SPECIFICATIONS	5
5.1. ABSOLUTE MAXIMUM RATINGS	5
5.2. DC CHARACTERISTICS (TA = 0°C ~ 70°C, VCC = 3.0V~3.6V)	5
5.3. AC CHARACTERISTICS (TA = 0°C ~ 70°C, VCC = 3.0V~3.6V).....	5
5.4. AC TEST CONDITIONS.....	6
6. TIMING DIAGRAM	6
6.1. RANDOM READ	6
6.2. PAGE READ.....	6
7. APPLICATION NOTE	7
7.1. POWER PAD BONDING GUIDELINE	7
7.2. PCB LAYOUT SUGGESTION.....	7
8. PACKAGE/PAD LOCATIONS	8
8.1. ORDERING INFORMATION	8
9. DISCLAIMER	9
10. REVISION HISTORY	10

32M-BIT PAGE MODE MASK ROM

1. FEATURES

- Bit organization
 - 4M x 8 (byte mode)
 - 2M x 16 (word mode)
- Fast access time
 - Random access: 90ns (max.)
 - Page access: 30ns (max.)
- Page Size
 - 8 words per page
- Current
 - Operating: 40mA
 - Standby: 5uA
- Supply Voltage
 - 3.0V ~ 3.6V

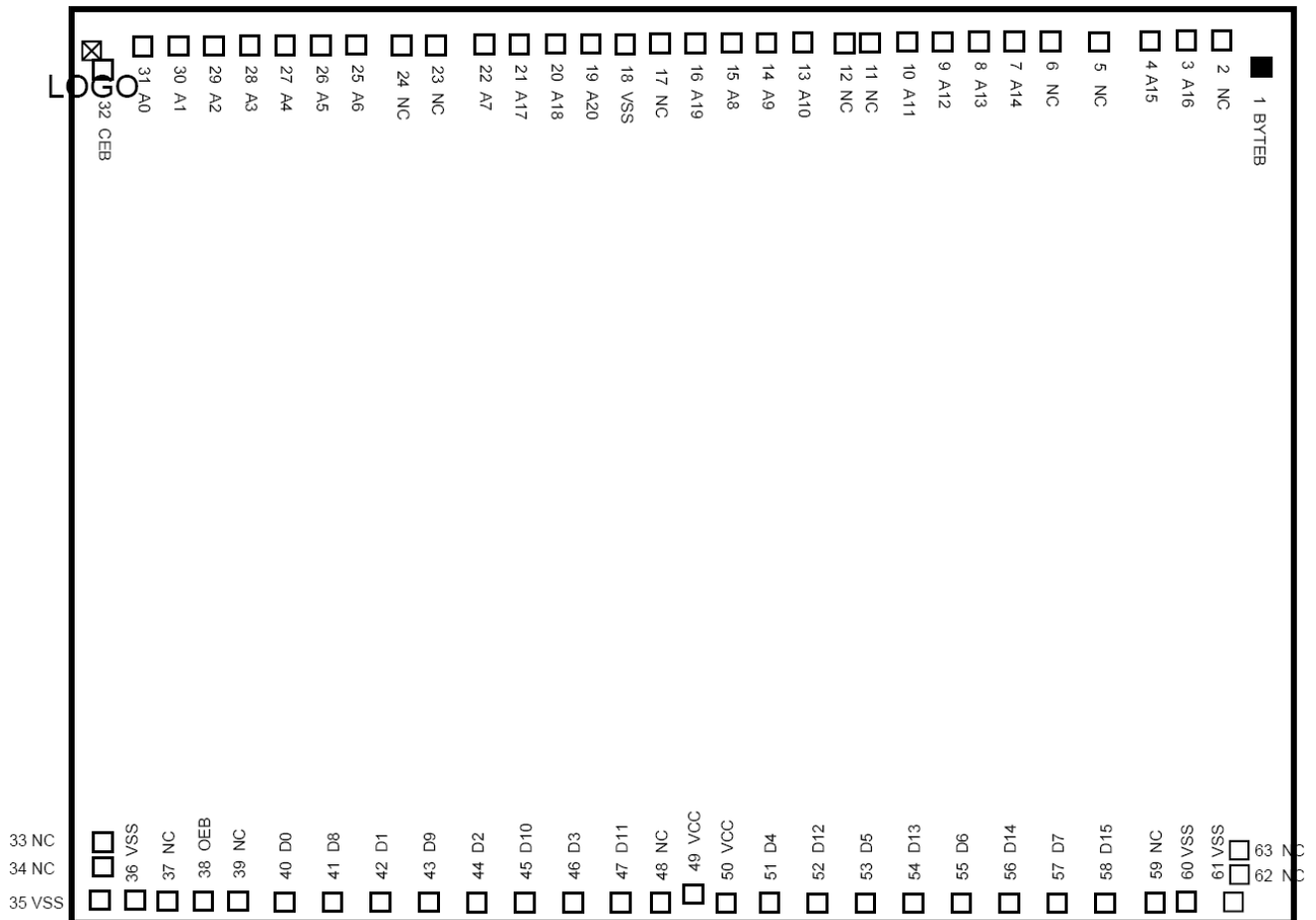
2. BLOCK DIAGRAM



3. PIN DESCRIPTION

Symbol	PIN Function
A0~A20	Address Inputs
D0~D14	Data Outputs
D15/A-1	D15 (Word Mode)/ LSB Address (Byte Mode)
CEB	Chip Enable Input
OEB	Output Enable Input
BYTEB	Word/ Byte Mode Selection
VCC	Power Supply Pin
VSS	Ground Pin
NC	No Connection

3.1. Pad Assignment



4. MODE SELECTION

CEB	OEB	BYTEB	D15/A-1	D0~D7	D8~D15	Mode	Power
H	X	X	X	High Z	High Z	-	Stand-by
L	H	X	X	High Z	High Z	-	Active
L	L	H	Output	D0~D7	D8~D15	Word	Active
L	L	L	Input	D0~D7	High Z	Byte	Active

5. ELECTRICAL SPECIFICATIONS

5.1. Absolute Maximum Ratings

Item	Symbol	Ratings
Supply Voltage Relative to VSS	VCC	-0.3V to 4.3V
Voltage on any Pin Relative to VSS	VIN	-0.5V to VCC + 2.0V
Ambient Operating Temperature	Topr	0°C to 70°C
Storage Temperature	Tstg	-65°C to 125°C

5.2. DC Characteristics (Ta = 0°C ~ 70°C, VCC = 3.0V~3.6V)

Item	Symbol	Min.	Max.	Conditions
Output High Voltage	VOH	2.4V	-	IOH = -400uA
Output Low Voltage	VOL	-	0.4V	IOL = 1.6mA
Input High Voltage	VIH	2.2V	VCC+0.3V	
Input Low Voltage	VIL	-0.3V	0.8V	
Input Leakage Current	ILI	-	5uA	0V, VCC
Output Leakage Current	ILO	-	5uA	0V, VCC
Operating Current	ICC1	-	40mA	tRC = 100ns, all output open
Standby Current (TTL)	ISTB1	-	1mA	CEB = VIH
Standby Current (CMOS)	ISTB2	-	5uA	CEB >VCC-0.2V
Input Capacitance	CIN	-	10pF	Ta = 25°C, f = 1MHZ
Output Capacitance	COUT	-	10pF	Ta = 25°C, f = 1MHZ

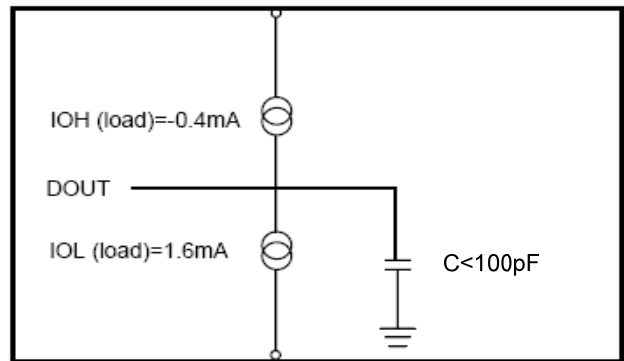
5.3. AC Characteristics (Ta = 0°C ~ 70°C, VCC = 3.0V~3.6V)

Item	Symbol	Min.	Max.
Read Cycle Time	tRC	90ns	-
Address Access Time	tAA	-	90ns
Chip Enable Access Time	tACE	-	90ns
Page Mode Access Time	tPA	-	30ns
Output Enable Time	tOE	-	30ns
Output Hold After Address	tOH	0ns	-
Output High Z Delay	tHZ*	-	20ns

Note: Output high-impedance delay (tHZ) is measured from OEB or CEB going high, and this parameter guaranteed by design over the full voltage and temperature operating range - not tested.

5.4. AC Test Conditions

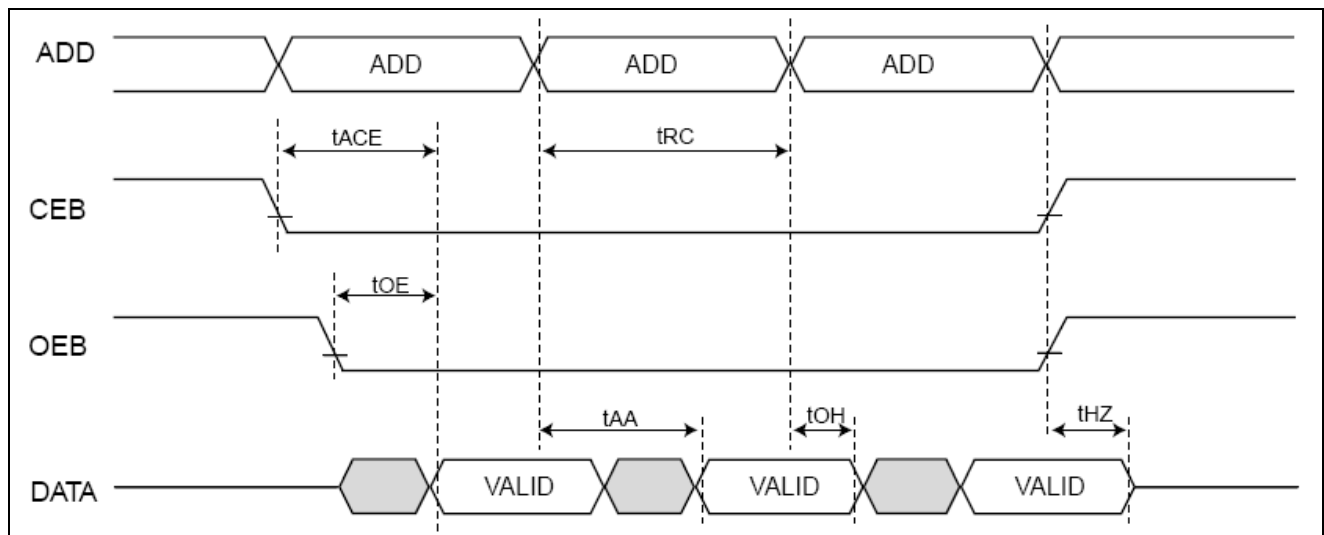
Input Pulse Levels	0.4V~2.6V
Input Rise and Fall Times	10ns
Input Timing Level	1.4V
Output Timing Level	1.4V
Output Load	See Figure



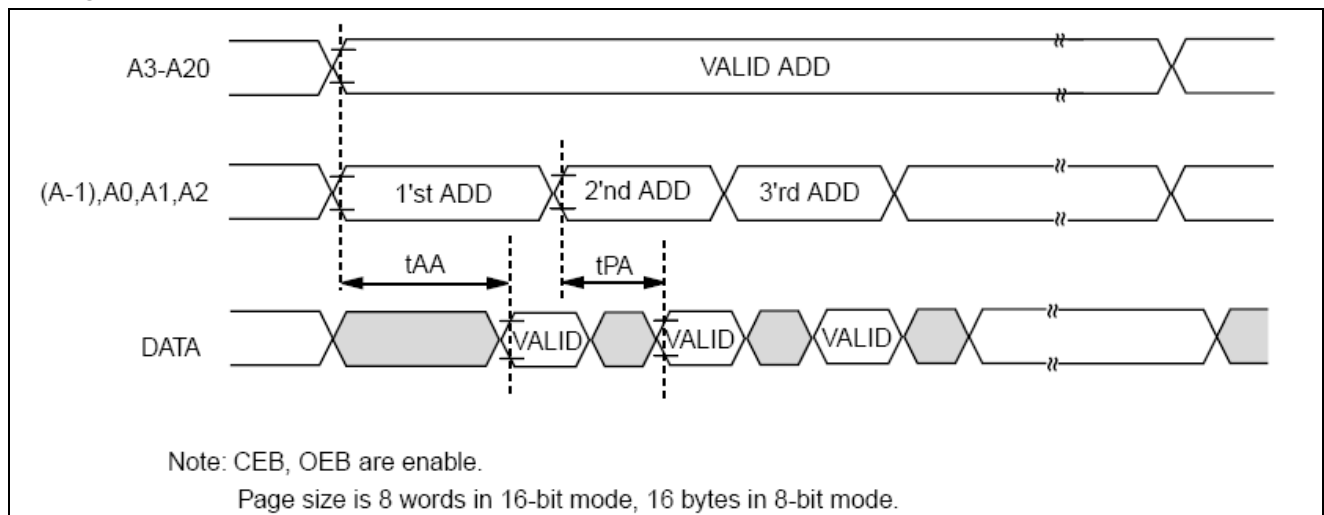
Note: No output loading is present in tester load board. Active loading is used and under software programming control. Output loading capacitance includes load board's and all stray capacitance.

6. TIMING DIAGRAM

6.1. Random Read



6.2. Page Read



7. APPLICATION NOTE

7.1. Power Pad Bonding Guideline

1. Except NC pads, all the other Power pads should be wire bonded, please do not keep them floating.
2. Please keep the PCB layout width \geq 20 mil for the VCC/VCCQ and VSS/VSSQ.(Figure 1)
3. For better noise immunity, it is recommended to add Bead (300mA minimum) and Bypass capacitor near to the VCC/VCCQ pins. (Figure 2)

7.2. PCB Layout Suggestion

1. The Substrate should be floating, not connected to GROUND.
2. Each Power pad (VCC/VCCQ, VSS/VSSQ) should be wire bonded to a dedicated power pin, then keep one centimeter distance at least before the user want to merge the PCB layout for those pins , can not be just bonded each Power pad to the same power pin.(Figure 3)
3. The Address and Data bus lines of MROM should be separated away in PCB layout.
4. Each Control pin (PCEB or POEB) should be shielded by GROUND lines.
5. If the Connector is adopted in the PCB, it is recommended to connect more sets of connections to VSS/VSSQ and VCC/VCCQ for both the PCB and the system.

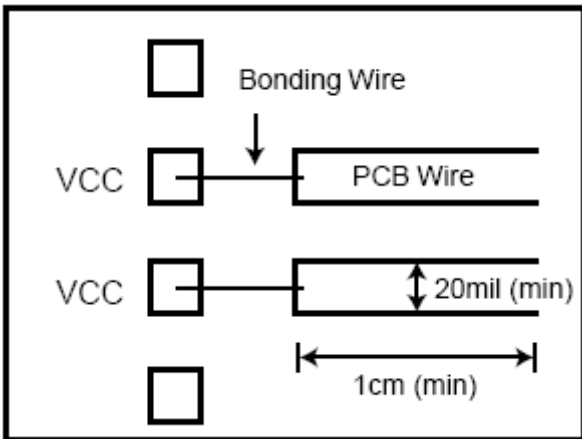


Figure 1 Power Pin Pitch

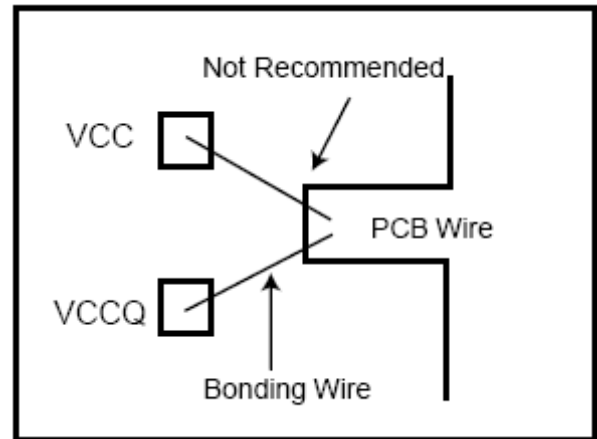


Figure 3 Dedicated Power Pin

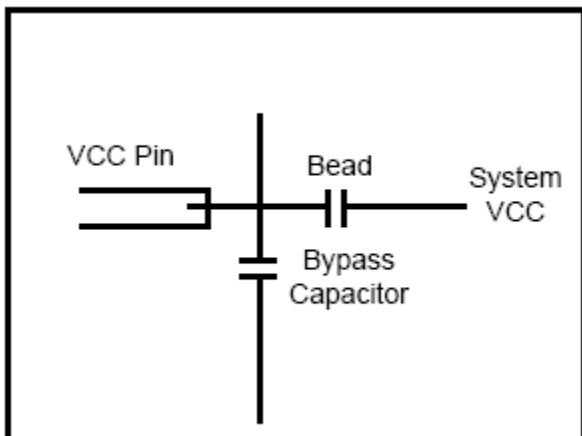


Figure 2 Bead and Bypass Capacitor to Power Pin

8. PACKAGE/PAD LOCATIONS

8.1. Ordering Information

Product Number	Package Type
GPR23L3211E - NnnV - C	Chip form

Note1: Code number is assigned for customer.

Note2: Code number (N = A - Z or 0 - 9, nn = 00 - 99); version (V = A - Z).

9. DISCLAIMER

The information appearing in this publication is believed to be accurate.

Integrated circuits sold by Generalplus Technology are covered by the warranty and patent indemnification provisions stipulated in the terms of sale only. GENERALPLUS makes no warranty, express, statutory implied or by description regarding the information in this publication or regarding the freedom of the described chip(s) from patent infringement. FURTHER, GENERALPLUS MAKES NO WARRANTY OF MERCHANTABILITY OR FITNESS FOR ANY PURPOSE. GENERALPLUS reserves the right to halt production or alter the specifications and prices at any time without notice. Accordingly, the reader is cautioned to verify that the data sheets and other information in this publication are current before placing orders. Products described herein are intended for use in normal commercial applications. Applications involving unusual environmental or reliability requirements, e.g. military equipment or medical life support equipment, are specifically not recommended without additional processing by GENERALPLUS for such applications. Please note that application circuits illustrated in this document are for reference purposes only.

10. REVISION HISTORY

Date	Revision #	Description	Page
DEC. 25, 2009	1.2	1. Modify Product name.	5
		2. Modify 5.1. Absolute Maximum Ratings.	6
		3. Modify 5.4. AC Test Conditions.	
SEP. 24, 2008	1.1	Modify 3.1 Pad Assignment.	4
FEB. 29, 2008	1.0	Original	10