

GT7161 Single/GT7162 Dual



1.5 MHz, Zero-Drift, CMOS, Rail-to-Rail Operational Amplifier with RF Filter

Advanced

1. Features

- Single-Supply Operation from +2.5V ~ +5.5V
- Rail-to-Rail Input / Output
- Gain-Bandwidth Product: 1.5 MHz (Typ.)
- Quiescent Current per Amplifier: 320 μ A /opamp (Typ.)
- Zero Drift: 0.02 μ V/ $^{\circ}$ C (Max.)
- Low Offset Voltage: 10 μ V (Max. @25 $^{\circ}$ C)
- Low Input Bias Current: 10pA (Typ. @25 $^{\circ}$ C)
- Slew Rate: 0.5V/ μ s (Typ.)
- THDN: 0.0005 % (Typ.) @ $f_s=1$ kHz
- Embedded RF Anti-EMI Filter
- Operating Temperature: -40 $^{\circ}$ C ~ +125 $^{\circ}$ C
- GT7161 Available in SOT23-5 and SOP8 Packages
- GT7162 available in SOP8 and MSOP8 Packages

2. General Description

The GT7161/GT7162 amplifier is single/dual supply, micro-power, zero-drift CMOS operational amplifiers, the amplifiers offer bandwidth of 1.5 MHz, rail-to-rail inputs and outputs, and single-supply operation from 2.5V to 5.5V. GT7161/GT7162 uses chopper stabilized technique to provide very low offset voltage (less than 10 μ V maximum) and near zero drift over temperature. Low quiescent supply current of 320 μ A per amplifier and very

low input bias current of 10pA make the devices an ideal choice for low offset, low power consumption and high impedance applications.

The GT7161 is available in SOT23-5 and SOP8 packages. And the GT7162 is available in SOP8 and MSOP8 packages. The extended temperature range of -40 $^{\circ}$ C to +125 $^{\circ}$ C over all supply voltages offers additional design flexibility.

3. Applications

- Portable Equipment
- Mobile Communications
- Filter and Buffer
- Sensor Interface
- Medical Instrumentation
- Battery-Powered Instruments
- Handheld Test Equipment

Copyright © 2010 Giantec Semiconductor Inc. (Giantec). All rights reserved. Giantec reserves the right to make changes to this specification and its products at any time without notice. Giantec products are not designed, intended, authorized or warranted for use as components in systems or equipment intended for critical medical or surgical equipment, aerospace or military, or other applications planned to support or sustain life. It is the customer's obligation to optimize the design in their own products for the best performance and optimization on the functionality and etc. Giantec assumes no liability arising out of the application or use of any information, products or services described herein. Customers are advised to obtain the latest version of this device specification before relying on any published information and prior placing orders for products.



GT7161 Single/GT7162 Dual

4. Pin Configuration

4.1 GT7161 SOT23-5 and SOP8 (Top View)

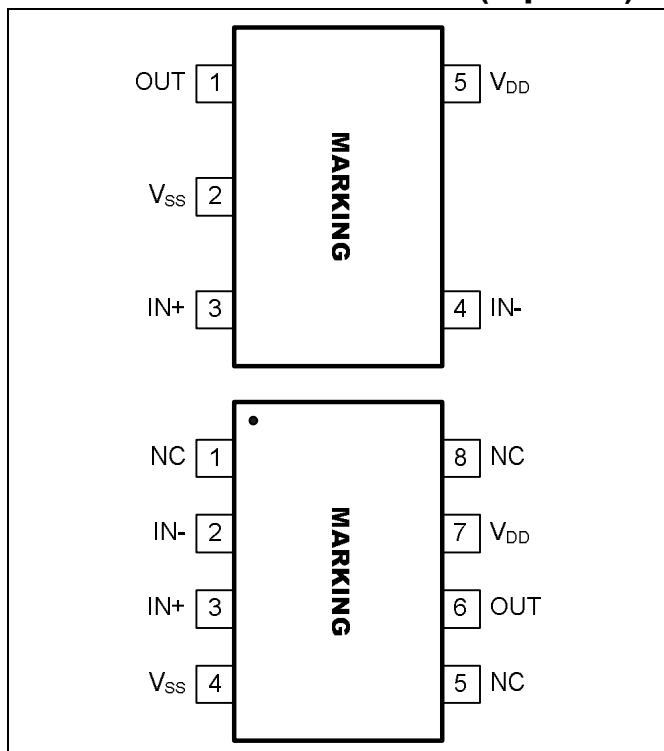


Figure 1-a. Pin Assignment Diagram (SOT23-5 and SOP8 Package)

4.2 GT7162 SOP8 and MSOP8 (Top View)

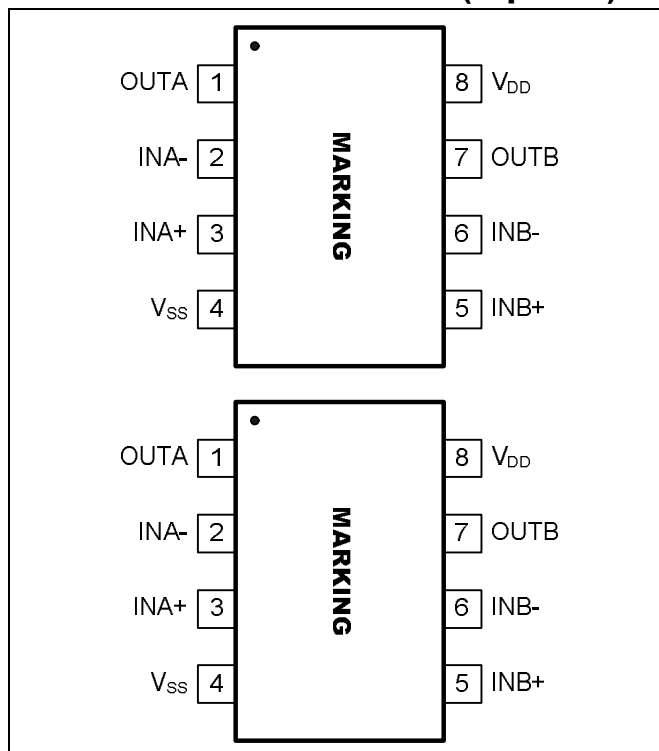


Figure 2-b. Pin Assignment Diagram (SOP8 and MSOP8 Package)

Note: Please see section “Part Markings” for detailed Marking Information.



GT7161 Single/GT7162 Dual

5. Electrical Characteristics

5.1 Absolute Maximum Ratings

Condition	Min	Max
Power Supply Voltage (V_{DD} to V_{SS})	-0.5V	+7V
Analog Input Voltage ($IN+$ or $IN-$)	$V_{SS}-0.5V$	$V_{DD}+0.5V$
PDB Input Voltage	$V_{SS}-0.5V$	+7V
Operating Temperature Range	-40°C	+125°C
Junction Temperature	+150°C	
Storage Temperature Range	-65°C	+150°C
Lead Temperature (soldering, 10sec)	+300°C	
Package Thermal Resistance ($T_A=+25^\circ C$)		
SOP23-5, θ_{JA}	190°C	
SOP8, θ_{JA}	130°C	
MSOP8, θ_{JA}	210°C	

Note: Stress greater than those listed under Absolute Maximum Ratings may cause permanent damage to the device. This is a stress rating only and functional operation of the device at these or any other conditions outside those indicated in the operational sections of this specification are not implied. Exposure to absolute maximum rating conditions for extended periods may affect reliability.

5.2 Electrical Characteristics

($V_{DD} = +5V$, $V_{SS} = 0V$, $V_{CM} = 0V$, $V_{OUT} = V_{DD}/2$, $R_L = 10K$ tied to $V_{DD}/2$, $SHDNB = V_{DD}$, $T_A = -40^\circ C$ to $+125^\circ C$, unless otherwise noted. Typical values are at $T_A = +25^\circ C$.) (Note 1)

Parameter	Symbol	Conditions	Min.	Typ.	Max.	Units
Supply-Voltage Range	V_{DD}	Guaranteed by the PSRR test	2.5	-	5.5	V
Quiescent Supply Current (per Amplifier)	I_Q	$V_{DD} = 5V$	-	320	380	μA
Input Offset Voltage	V_{OS}		-	-	10	μV
Input Offset Voltage Tempco	$\Delta V_{OS}/\Delta T$		-	-	0.02	$\mu V/^\circ C$
Input Bias Current	I_B	(Note 2)	-	10	-	pA
Input Offset Current	I_{OS}	(Note 2)	-	100	-	pA
Input Common-Mode Voltage Range	V_{CM}		-0.1	-	$V_{DD}+0.1$	V
Common-Mode Rejection Ratio	CMRR	$V_{DD}=5.5 V_{SS}-0.1V \leq V_{CM} \leq V_{DD}+0.1V$	100	120	-	dB
		$V_{SS} \leq V_{CM} \leq 5V$	110	130	-	dB
Power-Supply Rejection Ratio	PSRR	$V_{DD} = +2.5V$ to $+5.5V$	110	130	-	dB
Open-Loop Voltage Gain	A_V	$V_{DD}=5V$, $R_L=10k\Omega$, $0.05V \leq V_O \leq 4.95V$	110	130	-	dB



GT7161 Single/GT7162 Dual

Electrical Characteristics (Continued)

Parameter	Symbol	Conditions	Min.	Typ.	Max.	Units
Output Voltage Swing	V_{OUT}	$ V_{IN+}-V_{IN-} \geq 10\text{mV}$, $R_L = 100\text{k}\Omega$ to $V_{DD}/2$, $V_{DD}-V_{OH}$	-	6	-	mV
		$ V_{IN+}-V_{IN-} \geq 10\text{mV}$, $R_L = 100\text{k}\Omega$ to $V_{DD}/2$, $V_{OL}-V_{SS}$	-	6	-	mV
		$ V_{IN+}-V_{IN-} \geq 10\text{mV}$, $R_L = 5\text{k}\Omega$ to $V_{DD}/2$, $V_{DD}-V_{OH}$	-	60	-	mV
		$ V_{IN+}-V_{IN-} \geq 10\text{mV}$, $R_L = 5\text{k}\Omega$ to $V_{DD}/2$, $V_{OL}-V_{SS}$	-	60	-	mV
Output Short-Circuit Current	I_{SC}	Sinking or Sourcing	-	± 15	-	mA
Gain Bandwidth Product	GBW	$A_V = +1V/V$	-	1.5	-	MHz
Slew Rate	SR	$A_V = +1V/V$	-	0.5	-	V/ μs
Settling Time	t_s	To 0.1%, $V_{OUT} = 2V$ step $A_V = +1V/V$	-	20	-	μs
Over Load Recovery Time		$V_{IN} \times \text{Gain} = V_S$	-	100	-	μs
Input Voltage Noise Density	e_n	$f = 1\text{kHz}$	-	15	-	nV/ $\sqrt{\text{Hz}}$
		$f = 100\text{Hz}$	-	16	-	
Total Harmonic Distortion plus Noise	THD+N	$V_{OUT} = 2V_{PP}$, $A_V = +1V/V$, $R_L = 10\text{k}\Omega$ to GND, $f = 1\text{kHz}$	-	0.0005	-	%
		$V_{OUT} = 2V_{PP}$, $A_V = +1V/V$, $R_L = 10\text{k}\Omega$ to GND, $f = 10\text{kHz}$	-	0.005	-	

Note 1: All devices are 100% production tested at $T_A = +25^\circ\text{C}$; all specifications over the automotive temperature range is guaranteed by design, not production tested.

Note 2: Parameter is guaranteed by design.



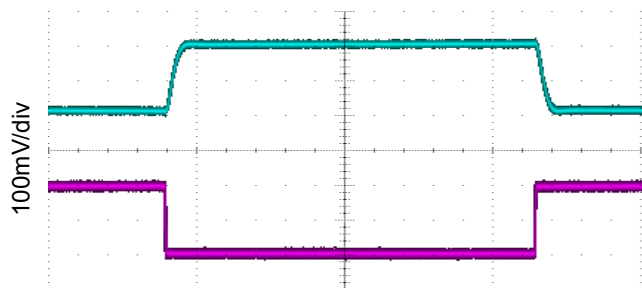
GT7161 Single/GT7162 Dual

5.3 Typical characteristics

($T_A=+25^{\circ}\text{C}$, $R_L=10\text{ k}\Omega$ connected to $V_S/2$ and $V_{OUT}=V_S/2$, unless otherwise noted.)

Small Signal Step Response

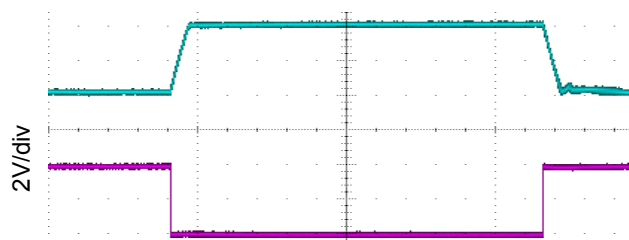
$G=-1\text{V/V}$, $R_L=10\text{ k}\Omega$, $C_L=100\text{ pF}$



4 $\mu\text{s}/\text{div}$

Large Signal Step Response

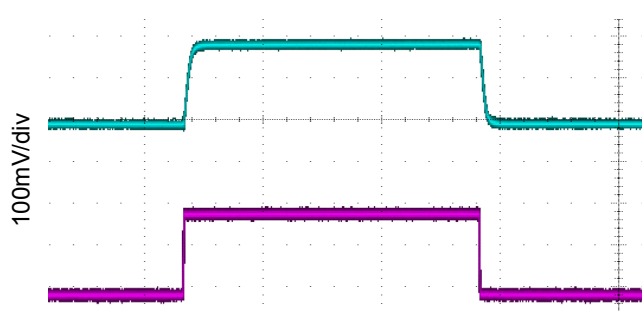
$G=-1\text{V/V}$, $R_L=10\text{ k}\Omega$, $C_L=100\text{ pF}$



10 $\mu\text{s}/\text{div}$

Small Signal Step Response

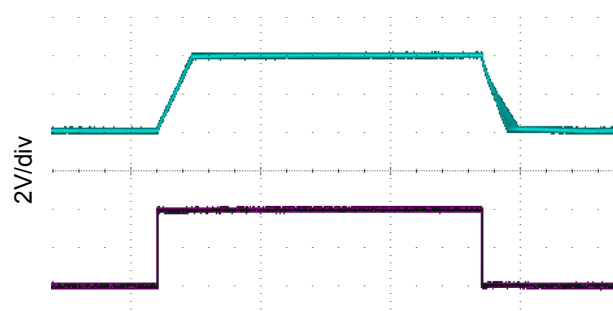
$G=+1\text{V/V}$, $R_L=10\text{ k}\Omega$, $C_L=100\text{ pF}$



4 $\mu\text{s}/\text{div}$

Large Signal Step Response

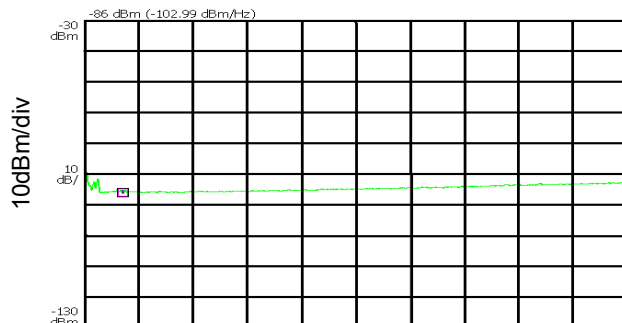
$G=+1\text{V/V}$, $R_L=10\text{ k}\Omega$, $C_L=100\text{ pF}$



4 $\mu\text{s}/\text{div}$

Input Voltage noise Spectral Density VS. Frequency

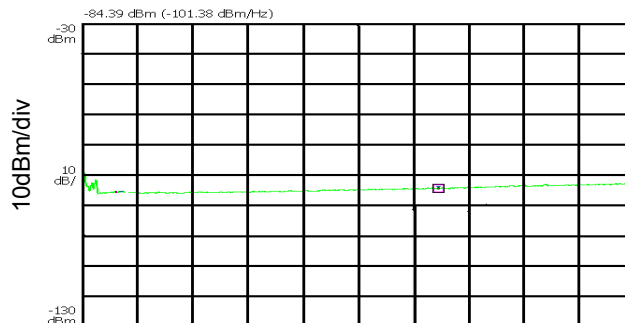
Noise Gain=101, $V_n=15.6(\text{nV}/\sqrt{\text{Hz}})$ @200Hz



200Hz/div

Input Voltage noise Spectral Density VS. Frequency

Noise Gain=101, $V_n=18.8(\text{nV}/\sqrt{\text{Hz}})$ @1KHz



200Hz/div

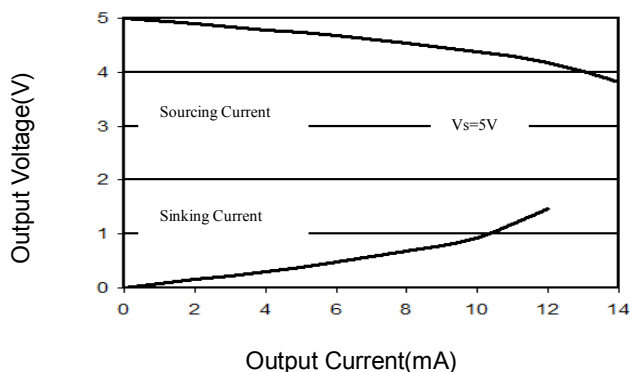


GT7161 Single/GT7162 Dual

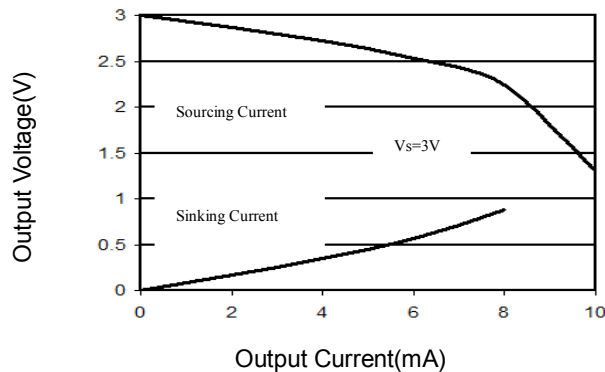
Typical characteristics (Continued)

$T_A=+25^{\circ}\text{C}$, $R_L=10\text{ k}\Omega$ connected to $V_S/2$ and $V_{OUT}=V_S/2$, unless otherwise noted.

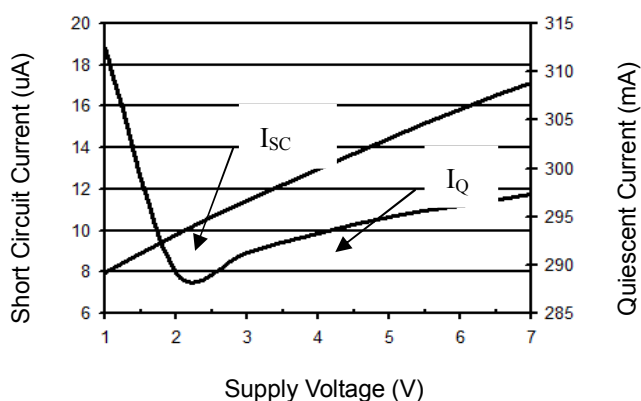
Output Voltage Swing vs. Output Current



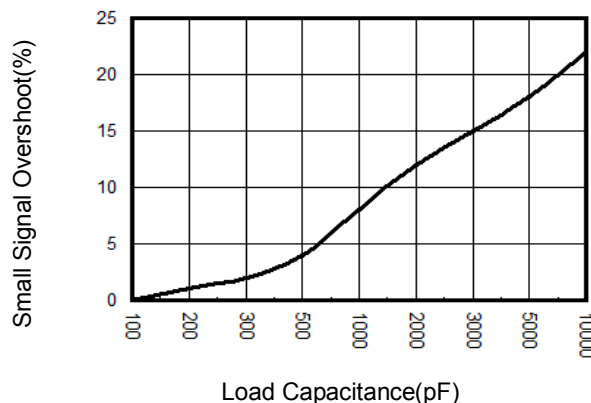
Output Voltage Swing vs. Output Current



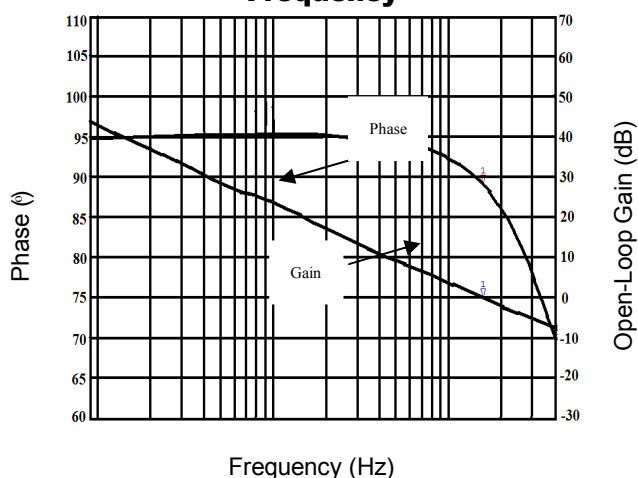
Quiescent and Short-Circuit Current Vs. Supply Voltage



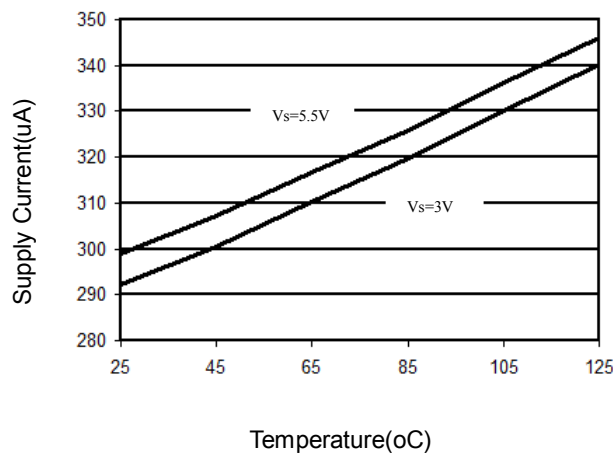
Small Signal Overshoot vs. Load Capacitance



Open-Loop Gain And Phase vs. Frequency



Supply Current vs. Temperature





GT7161 Single/GT7162 Dual

6. Application Information

6.1 Size

GT7161/GT7162 series op amps are unity-gain stable and suitable for a wide range of general-purpose applications. The small footprints of the GT7161/GT7162 series packages save space on printed circuit boards and enable the design of smaller electronic products.

6.2 Power Supply Bypassing and Board Layout

GT7161/GT7162 series operates from a single 2.5V to 5.5V supply or dual $\pm 1.25V$ to $\pm 2.75V$ supplies. For best performance, a $0.1\mu F$ ceramic capacitor should be placed close to the V_{DD} pin in single supply operation. For dual supply operation, both V_{DD} and V_{SS} supplies should be bypassed to ground with separate $0.1\mu F$ ceramic capacitors.

6.3 Low Supply Current

The low supply current (typical $320\mu A/640\mu A$) of GT7161/GT7162 series will help to maximize battery life. They are ideal for battery powered systems

6.4 Operating Voltage

GT7161/GT7162 series operate under wide input supply voltage (2.5V to 5.5V). In addition, all temperature specifications apply from $-40\text{ }^{\circ}C$ to $+125\text{ }^{\circ}C$. Most behavior remains unchanged throughout the full operating voltage range. These guarantees ensure operation throughout the single Li-Ion battery lifetime

6.5 Rail-to-Rail Input

The input common-mode range of GT7161/GT7162 series extends $100mV$ beyond the supply rails ($V_{SS}-0.1V$ to $V_{DD}+0.1V$). This is achieved by using complementary input stage. For normal operation, inputs should be limited to this range.

6.6 Rail-to-Rail Output

Rail-to-Rail output swing provides maximum possible dynamic range at the output. This is particularly important when operating in low supply voltages. The output voltage of GT7161/GT7162series can typically swing to less than $10mV$ from supply rail in light resistive loads

($>100k\Omega$), and $60mV$ of supply rail in moderate resistive loads ($10k\Omega$).

6.7 Capacitive Load Tolerance

The GT7161/GT7162 series can directly drive $250pF$ capacitive load in unity-gain without oscillation. Increasing the gain enhances the amplifier's ability to drive greater capacitive loads. In unity-gain configurations, the capacitive load drive can be improved by inserting an isolation resistor R_{ISO} in series with the capacitive load, as shown in **Figure 2**.

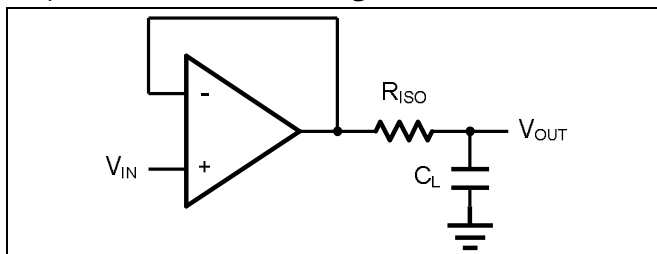


Figure 2. Indirectly Driving a Capacitive Load Using Isolation Resistor

The bigger the R_{ISO} resistor value, the more stable V_{OUT} will be. However, if there is a resistive load R_L in parallel with the capacitive load, a voltage divider (proportional to R_{ISO}/R_L) is formed, this will result in a gain error.

The circuit in **Figure 3** is an improvement to the one in **Figure 2**. R_F provides the DC accuracy by feed-forward the V_{IN} to R_L . C_F and R_{ISO} serve to counteract the loss of phase margin by feeding the high frequency component of the output signal back to the amplifier's inverting input, thereby preserving the phase margin in the overall feedback loop. Capacitive drive can be increased by increasing the value of C_F . This in turn will slow down the pulse response.



GT7161 Single/GT7162 Dual

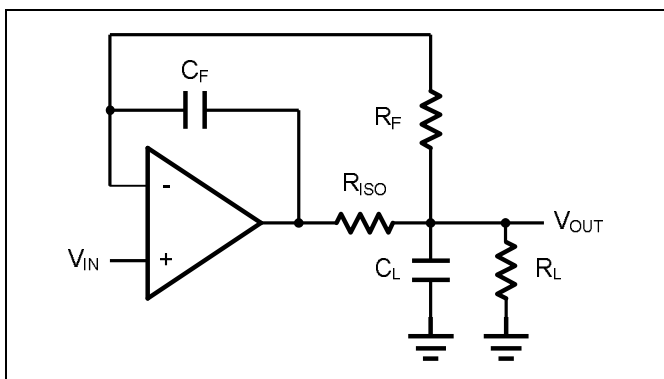


Figure 3. Indirectly Driving a Capacitive Load with DC Accuracy

6.8 Differential amplifier

The differential amplifier allows the subtraction of two input voltages or cancellation of a signal common to the two inputs. It is useful as a computational amplifier in making a differential to single-end conversion or in rejecting a common mode signal. **Figure 4.** shows the differential amplifier using GT7161/GT7162.

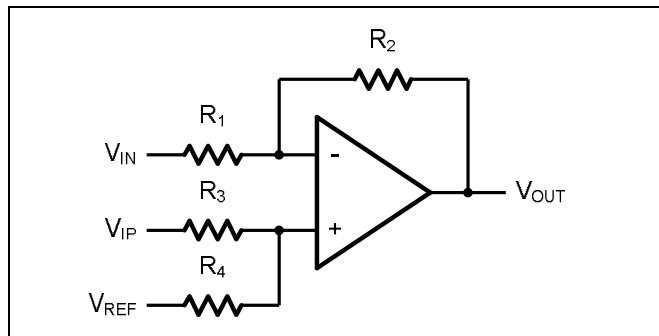


Figure 4. Differential Amplifier

$$V_{OUT} = \left(\frac{R_1+R_2}{R_3+R_4}\right) \frac{R_4}{R_1} V_{IN} - \frac{R_2}{R_1} V_{IP} + \left(\frac{R_1+R_2}{R_3+R_4}\right) \frac{R_3}{R_1} V_{REF}$$

If the resistor ratios are equal (i.e. $R_1=R_3$ and $R_2=R_4$), then

$$V_{OUT} = \frac{R_2}{R_1} (V_{IP} - V_{IN}) + V_{REF}$$

6.9 Instrumentation Amplifier

The input impedance of the previous differential amplifier is set by the resistors R_1 , R_2 , R_3 , and R_4 . To maintain the high input impedance, one can use a voltage follower in front of each input as shown in the following two instrumentation amplifiers.

6.10 Three-Op-Amp Instrumentation Amplifier

The dual GT7162 can be used to build a three-op-amp instrumentation amplifier as shown in **Figure 5.**



GT7161 Single/GT7162 Dual

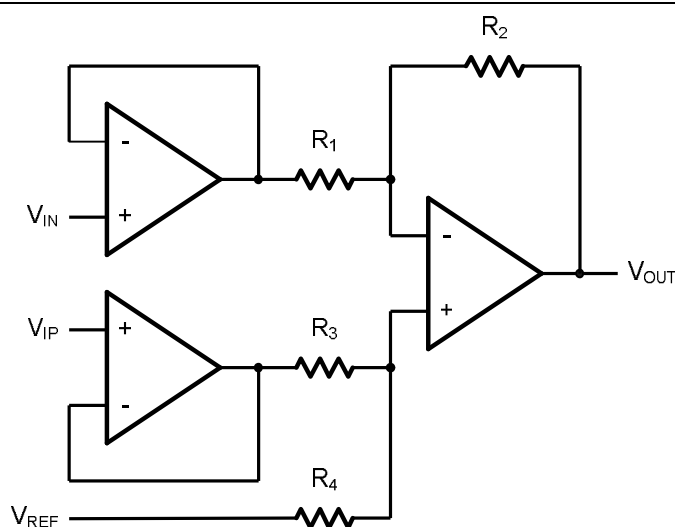


Figure 5. Three-Op-Amp Instrumentation Amplifier

The amplifier in **Figure 5** is a high input impedance differential amplifier with gain of R_2/R_1 . The two differential voltage followers assure the high input impedance of the amplifier.

$$V_{OUT} = \left(1 + \frac{R_4}{R_3}\right)(V_{IP} - V_{IN})$$

6.11 Two-Op-Amp Instrumentation Amplifier

GT7161/GT7162 can also be used to make a high input impedance two-op-amp instrumentation amplifier as shown in **Figure 6**.

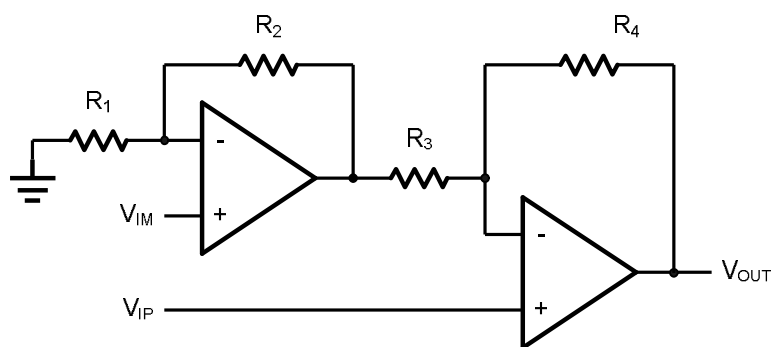


Figure 6. Two-Op-Amp Instrumentation Amplifier

Where $R_1=R_3$ and $R_2=R_4$. If all resistors are equal, then

$$V_{OUT}=2(V_{IP}-V_{IN})$$

GT7161 Single/GT7162 Dual

6.12 Single-Supply Inverting Amplifier

The inverting amplifier is shown in **Figure 7**. The capacitor C_1 is used to block the DC signal going into the

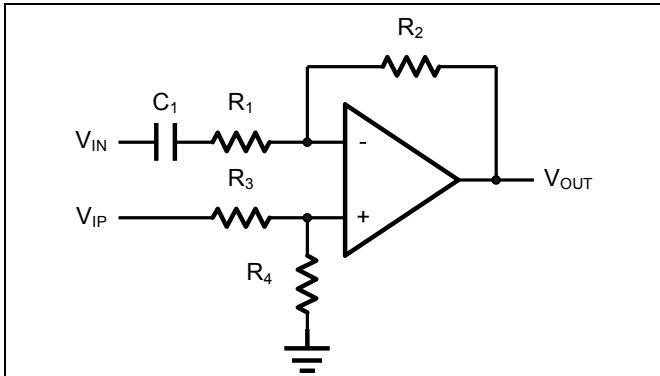


Figure 7. Single Supply Inverting Amplifier

6.13 Low Pass Active Filter

The low pass active filter is shown in **Figure 8**. The DC gain is defined by $-R_2/R_1$. The filter has a -20dB/decade roll-off after its corner frequency $f_c=1/(2\pi R_3 C_1)$.

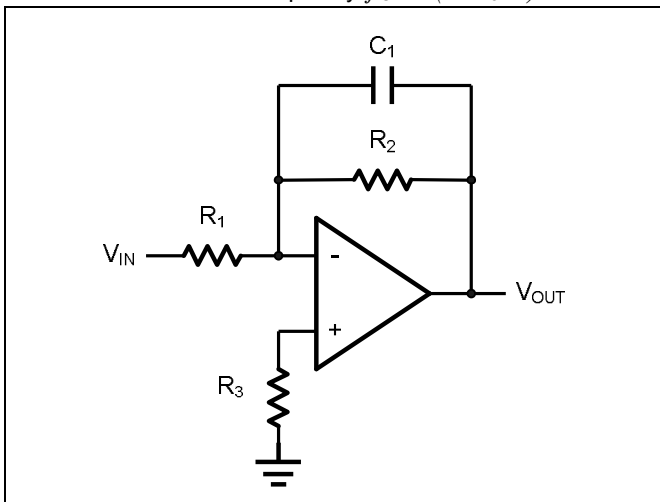


Figure 8. Low Pass Active Filter

6.14 Sallen-Key 2nd Order Active Low-Pass Filter

GT7161/GT7162 can be used to form a 2nd order Sallen-Key active low-pass filter as shown in **Figure 9**. The transfer function from V_{IN} to V_{OUT} is given by

$$\frac{V_{OUT}}{V_{IN}}(S) = \frac{\frac{1}{C_1 C_2 R_1 R_2} A_{LP}}{S^2 + S \left(\frac{1}{C_1 R_1} + \frac{1}{C_1 R_2} + \frac{1}{C_2 R_2} - \frac{A_{LP}}{C_2 R_2} \right) + \frac{1}{C_1 C_2 R_1 R_2}}$$

Where the DC gain is defined by $A_{LP} = 1 + R_3/R_4$, and the corner frequency is given by

AC signal source V_{IN} . The value of R_1 and C_1 set the cut-off frequency to $f_c = 1/(2\pi R_1 C_1)$. The DC gain is defined by $V_{OUT} = -(R_2/R_1)V_{IN}$

$$\omega C = \sqrt{\frac{1}{C_1 C_2 R_1 R_2}}$$

The pole quality factor is given by

$$\frac{\omega C}{Q} = \frac{1}{C_1 R_1} + \frac{1}{C_1 R_2} + \frac{1}{C_2 R_2} - \frac{A_{LP}}{C_2 R_2}$$

Let $R_1=R_2=R$ and $C_1=C_2=C$, the corner frequency and the pole quality factor can be simplified as below

$$\omega_C = \frac{1}{CR}$$

And $Q = 2 - R_3/R_4$

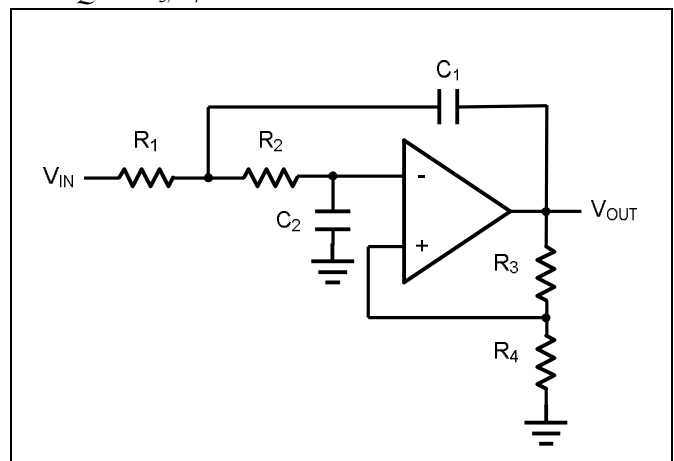


Figure 9. Sallen-Key 2nd Order Active Low-Pass Filter

6.15 Sallen-Key 2nd Order high-Pass Active Filter

The 2nd order Sallen-key high-pass filter can be built by simply interchanging those frequency selective components R_1 , R_2 , C_1 , and C_2 as shown in **Figure 10**.



GT7161 Single/GT7162 Dual

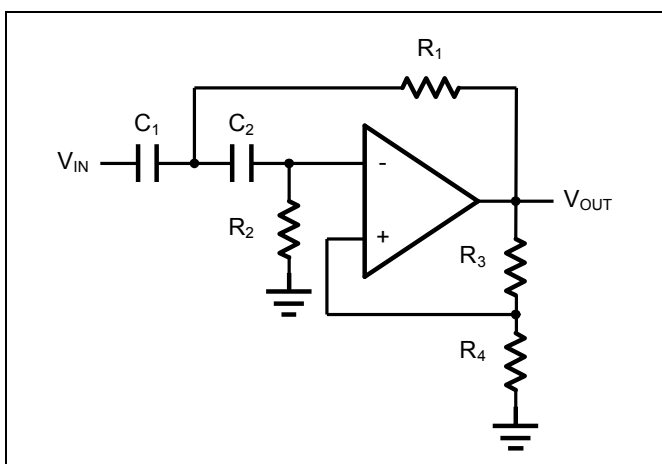


Figure 10. Sanllen-Key 2nd Order Active High-Pass Filter

$$\frac{V_{OUT}}{V_{IN}}(S) = \frac{S^2 A_{HP}}{S^2 + S\left(\frac{1}{C_1 R_1} + \frac{1}{C_2 R_2} + \frac{1 - A_{HP}}{C_1 R_1}\right) + \frac{1}{C_1 C_2 R_1 R_2}}$$

Where $A_{HP} = 1 + R_3/R_4$

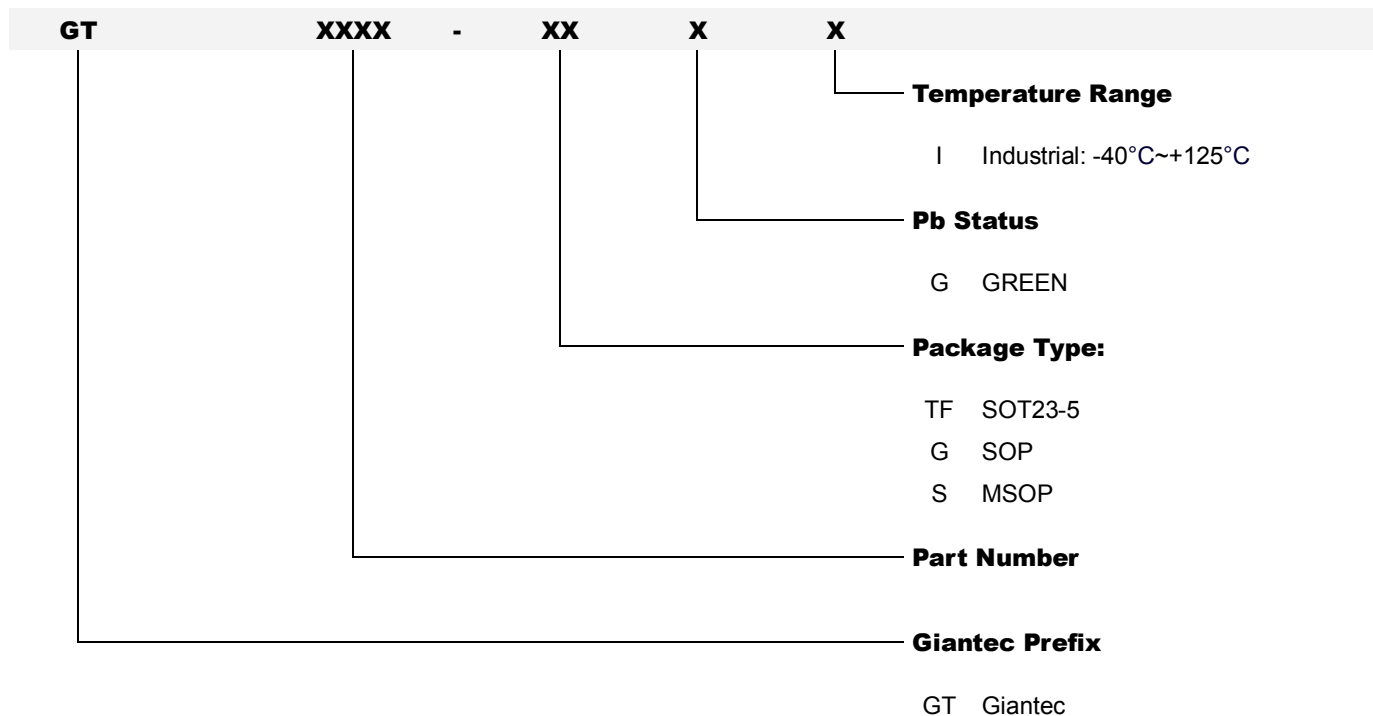
6.16 Input Offset Cancellation

The GT7161/GT7162 series opamps use internal chopping stabilized technique to cancel dc offset and flick noise. Since the offset temperature drift is a dc parameter, it is also cancelled by the chopping technique. The amplifier requires approximately 100 μ s to achieve the specified V_{os} accuracy.



GT7161 Single/GT7162 Dual

7. Ordering Information



Order Number	Package Description	Package Option
GT7161-TFGI-TR	SOT23-5	Tape and Reel 3000
GT7161-GGI-TR	SOP8	Tape and Reel 4000
GT7162-GGI-TR	SOP8	Tape and Reel 4000
GT7162-SGI-TR	MSOP8	Tape and Reel 4000



GT7161 Single/GT7162 Dual

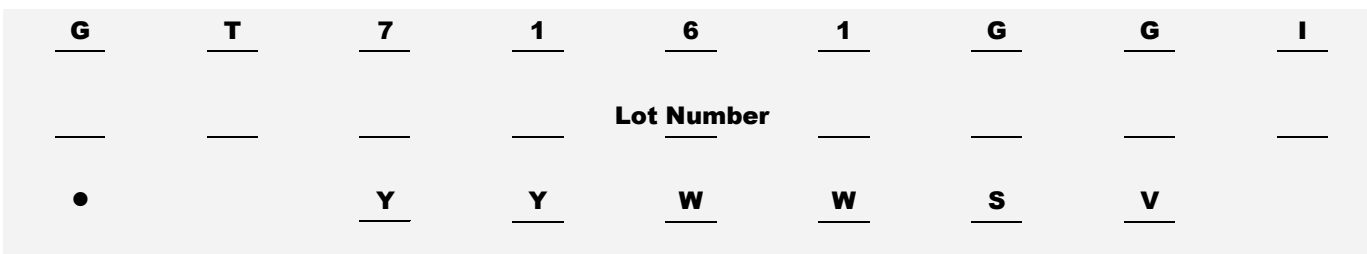
8. Part Markings

8.1 GT7161-TFGI (Top View)



161	GT7161-TFGI		
●	Pin 1 Indicator		
Y	Seal Year	W	Seal Week
2010 (1st half year)	A	Week 01	A
2010 (2nd half year)	B	Week 02	B
2011 (1st half year)	C	
2011 (2nd half year)	D	Week 26	Z
2012 (1st half year)	E	Week 27	A
2012 (2nd half year)	F	Week 28	B
.....
2022 (2nd half year)	Z	Week 52	Z

8.2 GT7161-GGI (Top View)

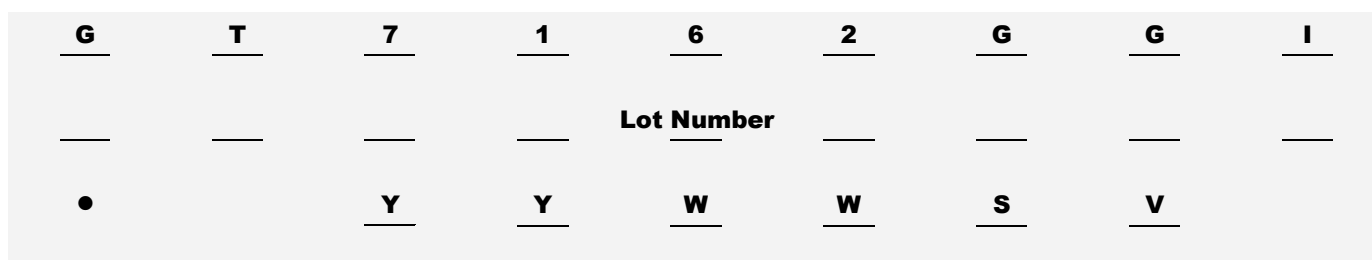


GT7161GGI		02 = Week 2
Lot Number	States the last 9 characters of the wafer lot information	.
●	Pin 1 Indicator	.
YY	Seal Year	51 = Week 51
	00 = 2000	52 = Week 52
	01 = 2001	S
	99 = 2099	Subcon Code
		J = ASESH
WW	Seal Week	L = ASEKS
	01 = Week 1	V
		Die Version



GT7161 Single/GT7162 Dual

8.3 GT7162-GGI (Top View)



GT7162GGI

02 = Week 2

Lot Number States the last 9 characters of the wafer lot information

.

• Pin 1 Indicator

.

YY Seal Year

51 = Week 51

00 = 2000

52 = Week 52

01 = 2001

S

Subcon Code

99 = 2099

J = ASESH

WW Seal Week

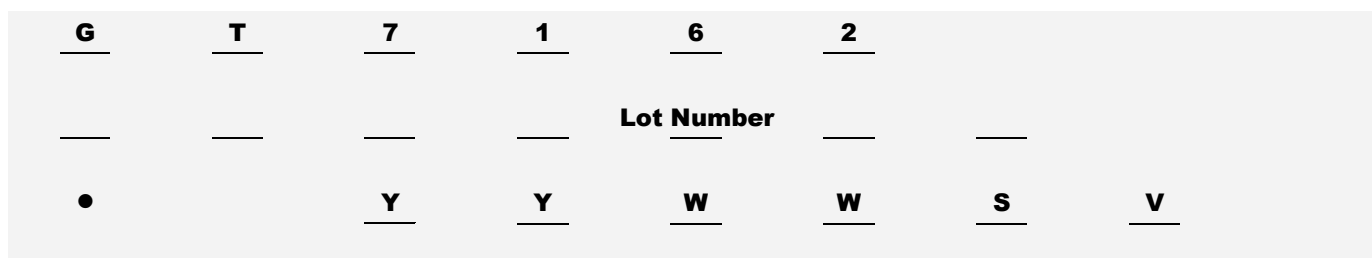
L = ASEKS

01 = Week 1

V

Die Version

8.4 GT7162-SGI (Top View)



GT7162

GT7162-SGI

02 = Week 2

Lot Number States the last 9 characters of the wafer lot information

.

• Pin 1 Indicator

.

YY Seal Year

51 = Week 51

00 = 2000

52 = Week 52

01 = 2001

S

Subcon Code

99 = 2099

J = ASESH

WW Seal Week

L = ASEKS

01 = Week 1

V

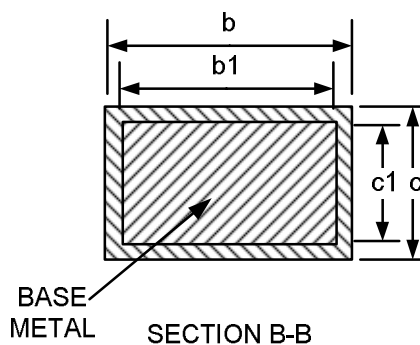
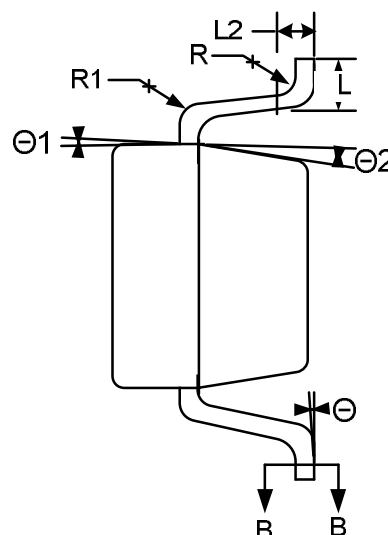
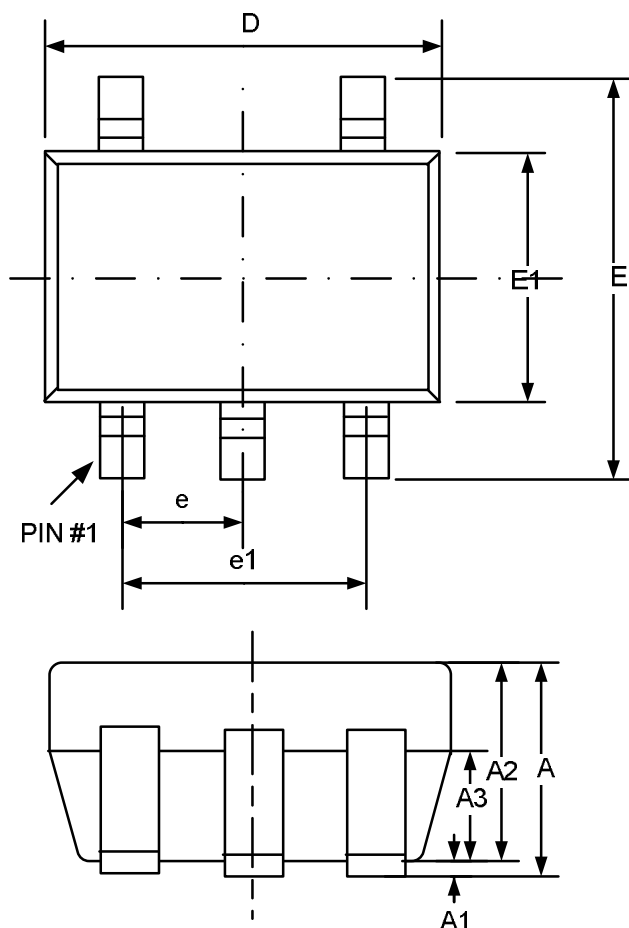
Die Version



GT7161 Single/GT7162 Dual

9. Package Information

9.1 SOP23-5



SYMBOLS	DIMENSIONS IN MILLIMETERS			DIMENSIONS IN INCHES		
	MIN	NOM	MAX	MIN	NOM	MAX
A	--	--	1.25	--	--	0.049
A1	0.00	--	0.15	0.000	--	0.006
A2	1.00	1.10	1.20	0.039	0.043	0.047
A3	0.60	0.65	0.70	0.024	0.026	0.028
b	0.36	--	0.50	0.014	--	0.020
b1	0.36	0.38	0.45	0.014	0.015	0.018
c	0.14	--	0.20	0.006	--	0.008
c1	0.14	0.15	0.16	0.006	0.006	0.006
D	2.826	2.926	3.026	0.111	0.115	0.119
E	2.60	2.80	3.00	0.102	0.110	0.118
E1	1.526	1.626	1.726	0.060	0.064	0.068
e	0.90	0.95	1.00	0.035	0.037	0.039
e1	1.80	1.90	2.00	0.071	0.075	0.079
L	0.35	0.45	0.60	0.014	0.018	0.024
L1	0.59REF			0.023REF		
L2	0.25BSC			0.010BSC		
R	0.10	--	--	0.004	--	--
R1	0.10	--	0.25	0.004	--	0.010
Θ	0°	--	8°	0°	--	8°
Θ1	3°	5°	7°	3°	5°	7°

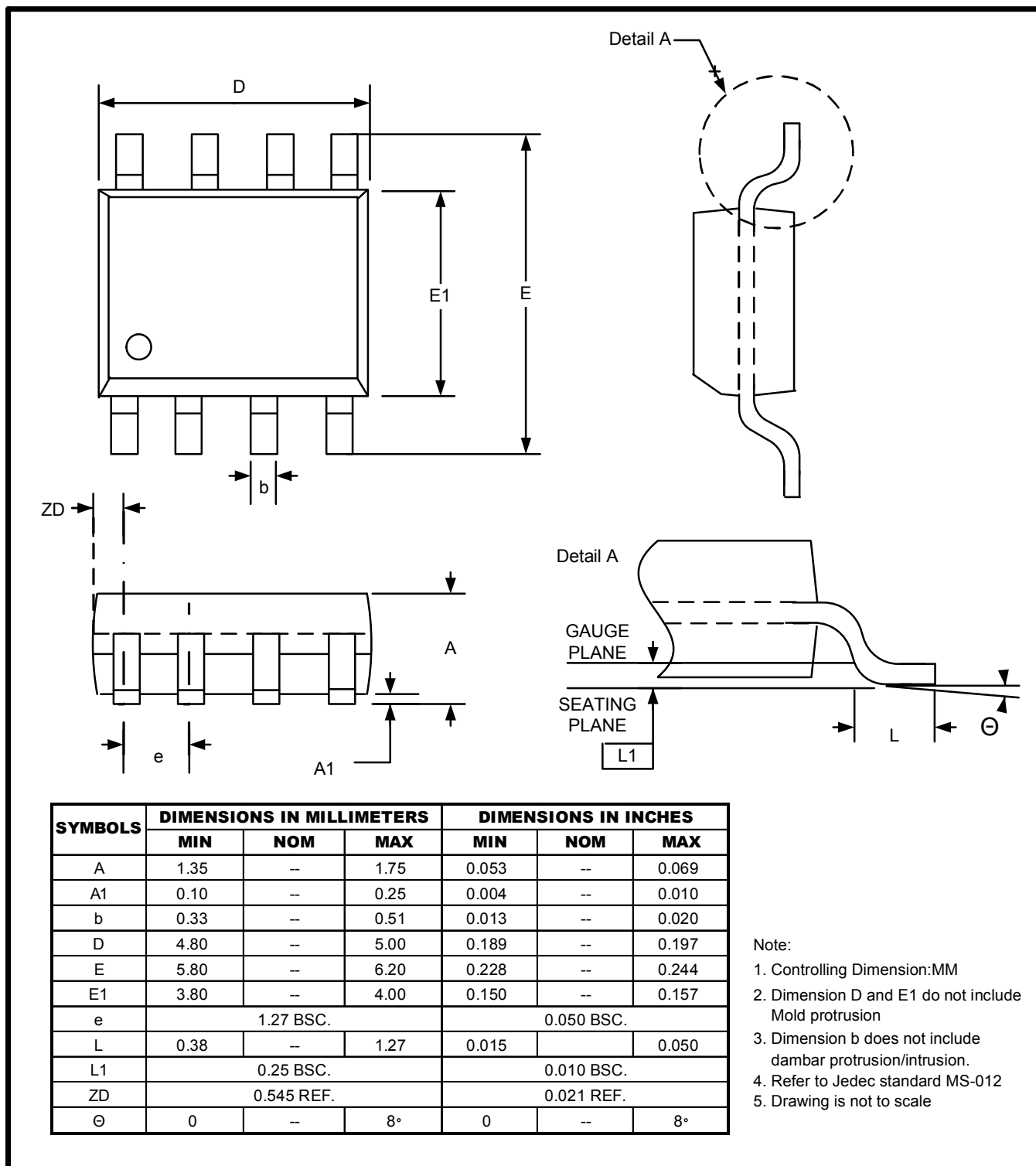
Note:

1. Controlling Dimension:MM
2. Dimension D and E1 do not include Mold protrusion
3. Dimension b does not include dambar protrusion/intrusion.
4. Refer to Jedec standard MO-178 AA
5. Drawing is not to scale



GT7161 Single/GT7162 Dual

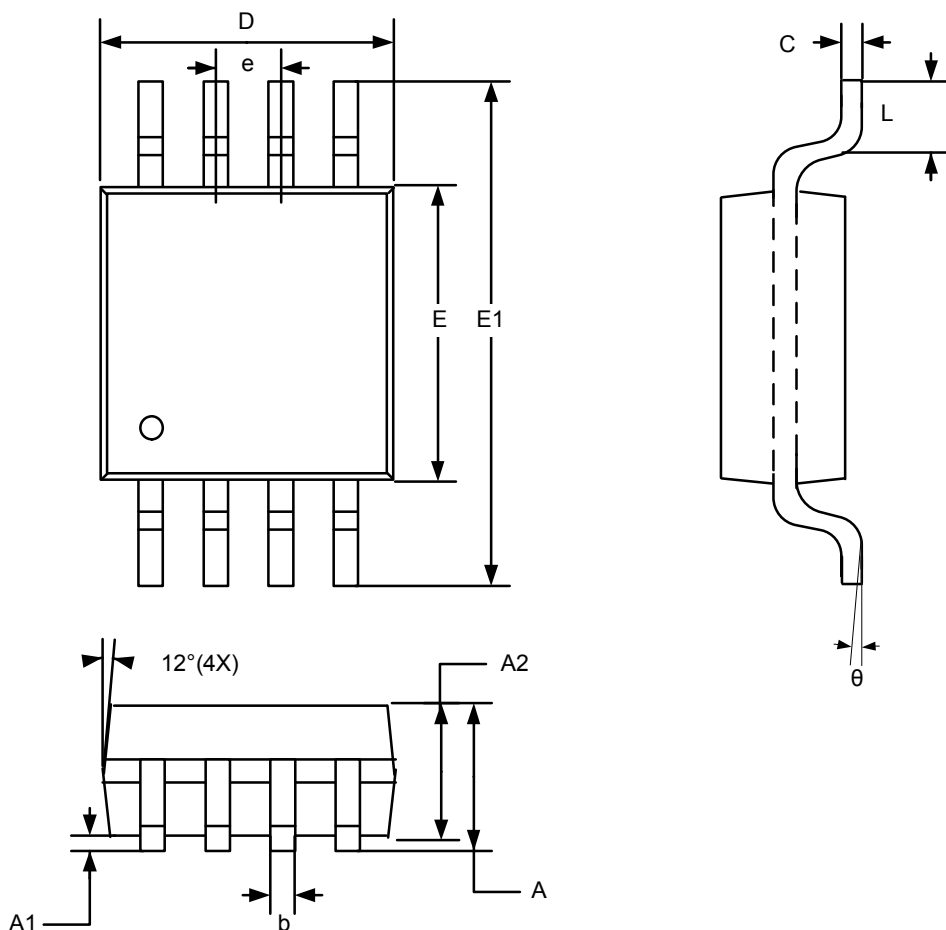
9.2 SOP8





GT7161 Single/GT7162 Dual

9.3 MSOP8



SYMBOLS	DIMENSIONS IN MILLIMETERS			DIMENSIONS IN INCHES		
	MIN	NOM	MAX	MIN	NOM	MAX
A	--	--	1.10	--	--	0.043
A1	0.05	--	0.15	0.002	--	0.006
A2	0.75	0.85	0.95	0.030	0.033	0.037
b	0.25	--	0.40	0.010	--	0.016
C	0.13	--	0.23	0.005	--	0.009
D	2.90	3.00	3.10	0.114	0.118	0.122
E	2.90	3.00	3.10	0.114	0.118	0.122
E1	4.90 BSC			0.193 BSC		
e	0.65 BSC			0.026 BSC		
L	--	--	0.55	--	--	0.022
Theta	0	--	7°	0	--	7°

- Note:
1. Controlling Dimension:MM
 2. Dimension D and E1 do not include Mold protrusion
 3. Refer to Jedec standard MO187
 4. Drawing is not to scale



GT7161 Single/GT7162 Dual

10. Revision History

Revision	Date	Descriptions
A0	Oct.,2011	Initial Version
A1	Nov.,2012	Fixed Version