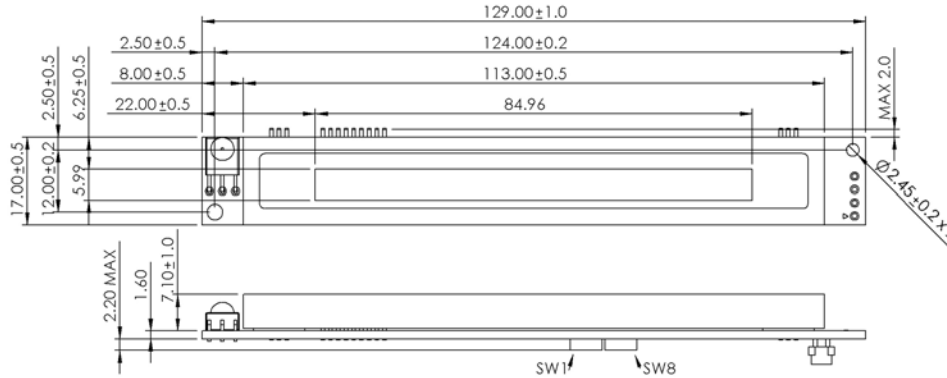


Dot Graphic VFD Module

GU128x8F-K610A8

- 128 x 8 High Brightness Dot Graphic Display
- Single 5V DC Supply
- 5x7 ASCII & European Font
- Asynchronous and SPI Serial Interfaces
- Transformerless Low Profile PSU
- Integrated IR Keyboard Receiver
- Terminal Mode with User Definable Edit Fields
- Multi-Address Daisy / Star Point Communication
- Semi-custom IR Codes, Character Fonts and Firmware

The module includes the VFD glass, VF drivers and microcontroller with refresh RAM, character generation, interface logic and patented transformerless DC/DC converter. The module features a unique low profile compact design. Key codes from the integrated IR receiver can be sent to the host. The module can operate in terminal mode where the host sends text with user editable fields. When editing is complete the user presses ENTER to transmit the display content to the host.



PL1 = AMP 8-215079-0
Mates with AMP 8-215083-0
Other connector options available.

Dimensions in mm.

ELECTRICAL SPECIFICATION

Parameter	Sym	Min	Typ	Max	Units	Condition
Supply Voltage	VDD	4.5	5.0	5.5	V	GND=0V
Supply Current	IDD	-	150	-	mA	VDD=5V(Disp on)
Supply Current	IDD	-	30	-	mA	VDD=5V(Disp off)
Logic High Input	VIH	3.0	-	VDD	V	VDD=5V
Logic Low Input	VIL	-0.5	-	1.5	V	VDD=5V
Logic High Output	VOH	4.2	-	-	V	VDD=5V
Logic Low Output	VOL	-	-	0.6	V	VDD=5V

OPTICAL & ENVIRONMENTAL SPECIFICATION

Parameter	Value
Display Area (XxYmm)	84.5 x 6.0
Dot Size/Pitch (XxY mm)	0.5 x 0.6 / 0.66 x 0.77
Luminance	700 cd/m ² Typical
Colour of Illumination	Blue-Green (505nm)
Operating Temperature	-40°C to +85°C
Storage Temperature	-40°C to +85°C
Operating Humidity	20 to 85% RH @ 25°C

Optical filters can provide violet, red, yellow, blue & green output.

PL1 (Asynchronous interface)

Pin	Signal	Description
1	VDD	5V Supply
2	-	Do not used
3	RXD	Serial input
4	-	Do not used
5	0V	0V supply
6	-	Do not used
7	TXD	Serial output
8	RESET	Reset input
9	MB	Module busy
10	HB	Host busy

PL1 (Synchronous interface)

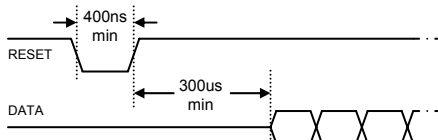
Pin	Signal	Description
1	VDD	5V Supply
2	SCK	Serial clock
3	/SS	Select
4	MOSI	Serial data in
5	0V	0V supply
6	MISO	Serial data out
7	-	Do not used
8	RESET	Reset input
9	MB	Module busy
10	HB	Host busy

CHARACTER TABLE

	00	01	02	03	04	05	06	07	08	09	0A	0B	0C	0D	0E	0F
00																
10																
20	!	"	#	\$	%	&	'	()	*	+	,	-	.	/	
30	0	1	2	3	4	5	6	7	8	9	:	;	<	=	>	?
40	a	b	c	d	e	f	g	h	i	j	k	l	m	n	o	
50	p	r	s	t	u	v	w	x	y	z	[\]	^	_	
60	`	a	b	c	d	e	f	g	h	i	j	k	l	m	n	o
70	p	r	s	t	u	v	w	x	y	z	[\]	^	_	
80	€	°	¶	¦	¸	¸	¸	¸	¸	¸	¸	¸	¸	¸	¸	¸
90	¸	¸	¸	¸	¸	¸	¸	¸	¸	¸	¸	¸	¸	¸	¸	¸
A0	"	!	0	3	¶	¶	¶	¶	¶	¶	¶	¶	¶	¶	¶	¶
B0	#	1	2	3	4	5	6	7	8	9	0	1	2	3	4	5
C0	A	A	A	A	A	A	E	E	E	E	E	E	E	E	E	E
D0	E	N	0	0	0	0	x	0	0	0	0	0	0	0	0	0
E0	á	á	á	á	á	á	á	á	á	á	á	á	á	á	á	á
F0	á	ñ	á	á	á	á	á	á	á	á	á	á	á	á	á	á

RESET TIMING

The module is reset when a low-level signal is applied to the RESET line which is pulled high with a 10K resistor.



Detailed specification, software commands and interface timing are available on request. Subject to change without notice. IUK Doc. No. 41680 Iss.1

02 Mar 10

CONTACT

Noritake Sales Office Tel Nos
Nagoya Japan: +81 (0)52-561-9867
Canada: +1-416-291-2946
Chicago USA: +1-847-439-9020
Munchen (D): +49 (0)89-3214-290
Itron UK: +44 (0)1493 601144
Rest Europe: +49 (0)61-0520-9220
www.noritake-iron.com

SOFTWARE COMMANDS (command execution time = 5us unless otherwise stated)

Instruction	Hex	Description
Dummy Read (SPI) Set Address (Async)	00H + xx	00H is used in SPI mode to allow a read operation. In asynchronous mode this command either enables the module with the specified address or initiates an auto addressing sequence. xx = 00H – 7FH set module address to receive data (00H enables all modules) xx = 80H – FFH start auto addressing sequence (1 st module adopts address xx+1)
Software Reset Execution time = 50uS	01H	Resets the VFD module. Text mode is enabled, the display is cleared, the write position is set to 00H, all flashing and edit areas are cleared and the display is turned on.
Set Character Mode	02H	Data is converted to 5x7 dot characters in the character table.
Set Graphic Mode	03H	Data is directly written to the dots on the display.
Set Start of Edit Area	04H	Defines the start of a user edit area in character mode.
Set End of Edit Area	05H	Defines the end of a user edit area in character mode.
Set Start of Flash Area	06H	All subsequent characters received will flash in character mode.
Set End of Flash Area	07H	All subsequent characters received will be static in character mode.
Enable / Disable User Edit	08H + xx	In user edit mode the underline cursor will be visible and the KBC56A IR keyboard can be used to enter data into the editing areas previously defined xx = 00H – disable, 01H – enable (IR ASCII echo OFF), 02H – enable (IR ASCII echo ON)
Read User Edit Data	09H	In user edit mode this command will send the current ASCII contents of the display
Cancel All Flashing	0AH	Cancels any flashing characters
Display ON	0BH	Turn display PSU ON (default)
Display OFF	0CH	Turn display PSU OFF (power save mode)
Set Write Position	0DH + xx	Sets the write position to xx. (00H – 14H in text mode, 00H – 7FH in graphic mode)
Graphic Write	0EH + len + data	Writes graphical data to the display at the current write position. The graphical data length is sent followed by the actual data which should be in a vertical orientation, with bit 7 uppermost. The writing position advances to the right after each data byte
Character Write Execution time = 85ms when scrolling	20H - FFH	Writes character data to the display. The character write position is automatically advanced to the right. When the right end of the display is reached new characters are scrolled in

INTERFACE SELECTION

Interface type is selected using option switch SW1. The function of the remaining switches depend on the interface selected. Switches SW5-8 can be used to specify the module address (addresses 1-15).

Interface selection (SW1)

SW1	Interface
Off	Synchronous (SPI)
On	Asynchronous

Synchronous mode settings (SW2-3)

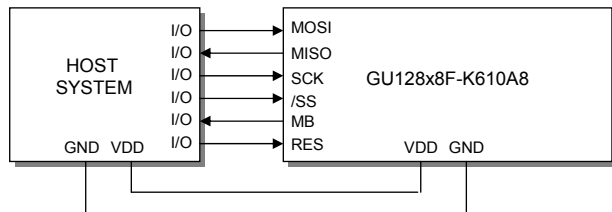
SW3	SW2	Mode
Off	Off	Mode 0 (idle low, rising clock)
Off	On	Mode 1 (idle low, falling clock)
On	Off	Mode 2 (idle high, falling clock)
On	On	Mode 3 (idle high, rising clock)

Asynchronous baud rate (SW2-3)

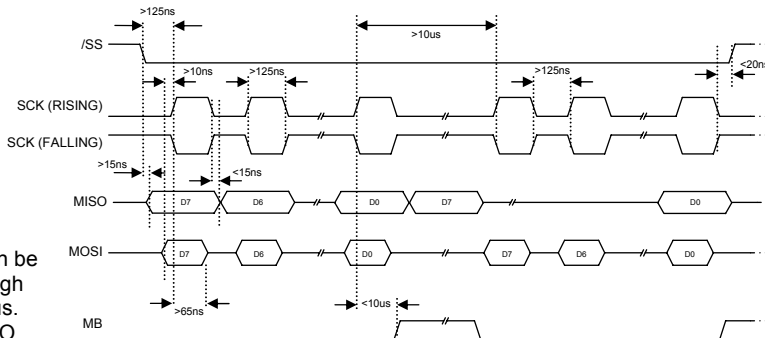
SW3	SW2	Baud
Off	Off	38400
Off	On	9600
On	Off	19200
On	On	115200

SYNCHRONOUS SERIAL COMMUNICATION (SPI)

With synchronous communications selected, data can be clocked into the VFD module using the rising or falling edge of SCK. The SCK idle state can be set low or high. By default data is clocked in on the rising edge, clock idle low. The most significant bit is always sent first. Data is stored in a 256 byte buffer. To ensure no loss of data when sending a large amount of continuous data the host can monitor the MB (Module Busy) line. MB will be set high if the number of bytes in the buffer waiting to be processed exceeds 224. Command execution times are specified in the software command section.

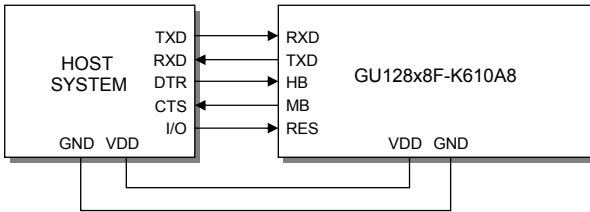


The /SS pin must be low when clocking data into the module. It can be permanently pulled low but this is not recommended since low – high transitions on the /SS pin ensures re-synchronisation of the SPI bus. 00H can be sent as a dummy byte in order to read data out of MISO.

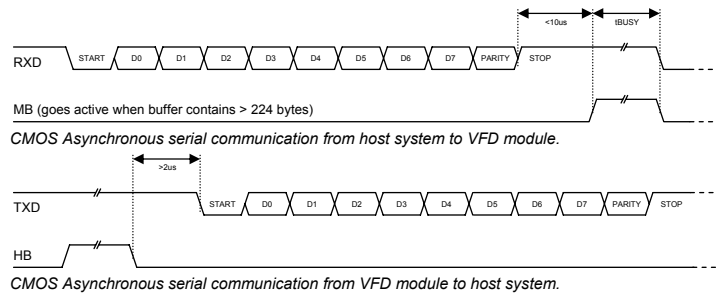


ASYNCHRONOUS SERIAL COMMUNICATION

The asynchronous communication baud rate can be set using option switches SW2-3. The default setting is 38400 baud. Multiple modules can be operated using star point or daisy chain connection with fixed addressing using jumper J12. Automatic addressing is available in daisy chain mode to allow communication with up to 127 modules.



The host busy line (HB), when high, stops the module from sending data to the host until the line goes low. The use of HB and MB is optional, and they can be connected together if not required.



Daisy Chain Connection

More than one display module can be connected to a host system. The host transmit line is connected to the RXD of the first module. TXD of the first module is connected to RXD of the next module, and so on. TXD of the last module is connected to the receive line of the host. It is possible to auto allocate addresses to all modules in the system. This method allows control of up to 127 modules. To auto allocate addresses the host must send 00H followed by a value with the MSB set (ie 80H). This will assign address 01H to the first module, 02H to the second module, and so on. The host must wait for the auto address allocation sequence to complete before sending more data. This can take up to 2ms x number of modules connected. The host can determine the number of modules in the system by reading the two bytes sent at the end of the auto address sequence. For instance a host with 4 displays connected will receive the values 00H + 84H (if 80H was sent as the base address).

After daisy mode has been enabled all command / data bytes are processed by all modules. To send commands / data to a specific module use the Set Address command in the range 00H – 7FH.

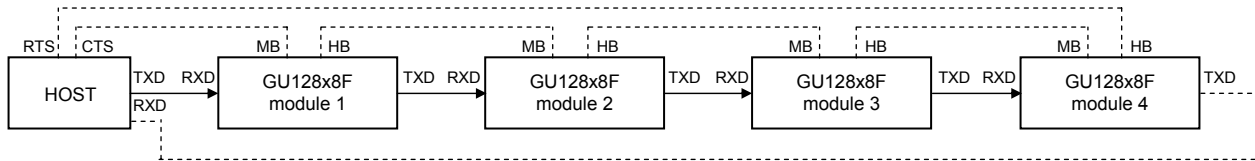
In daisy mode, data sent from the module to the host (ie IR key data) is sent as 3 bytes in the form 0FH, address, data.

Linking any option switches SW5-8 will enable manual daisy mode and the module address will relate to the switch settings as in the adjacent table. Up to 15 modules can be connected using this scheme.

Fixed module addressing (SW5-8)

SW8	SW7	SW6	SW5	Address
Off	Off	Off	Off	Daisy off
Off	Off	Off	On	1
Off	Off	On	Off	2
Off	Off	On	On	3
Off	On	Off	Off	4
Off	On	Off	On	5
Off	On	On	Off	6
Off	On	On	On	7
On	Off	Off	Off	8
On	Off	Off	On	9
On	Off	On	Off	10
On	Off	On	On	11
On	On	Off	Off	12
On	On	Off	On	13
On	On	On	Off	14
On	On	On	On	15

Example system using 4 modules in daisy chain mode



Minimum connections are shown using solid lines – dashed connections are optional.

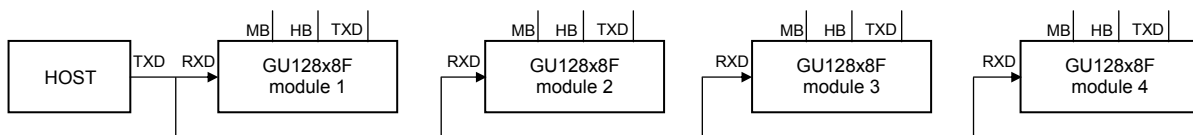
Host sends 00H + 80H to start auto addressing sequence and receives 00H + 84H from the last module when complete (if TXD from the last module is connected to RXD of the host). Alternatively the host can wait a period of time equal to the number of modules in the system x 2ms.

Module 1 is assigned address 01H, module 2 is address 02H, module 3 is address 03H and module 4 is address 04H.

Global addressing (broadcast mode) where all modules respond to data is set initially. The host must send 00H + 01H to address module 1, 00H + 02H to address module 2, and so on. Sending 00H + 00H sets broadcast mode.

Star Point Connection

When multiple modules are all directly connected to the host, fixed addressing needs to be set using jumpers on J12. Only RXD on each module is used – TXD, MB and HB should not be connected.



IR DATA TRANSMISSION (using KBC56A keyboard)

Data received by the IR receiver from the remote keyboard KBC56A is stored in an internal 16 byte buffer. In asynchronous mode the value is sent on TXD immediately, unless HB (host busy) is high. If the IR buffer is full, further data received is discarded. CTRL then ALT or CTRL then SHIFT enable ALT or SHIFT Lock which is cancelled using CTRL. When lock is on, ALT or SHIFT can be used to input a related alternate character. When the IR buffer is empty the data read is 00H.

Key	Normal	Shift	Lock	ALT	CTRL
ESC	1B	01	1B	02	80
TAB	03	04	03	05	81
INS	06	0E	06	0F	83
DEL	1A	10	1A	11	82
▲ PUp	0B	12	0B	13	84
◀ HME	08	14	08	15	85
▶ END	09	16	09	17	86
▼ PDn	0A	18	0A	19	87
? ¥ /	3F	9C	3F	2F	88
* € \	2A	9D	2A	5C	89
(£ [28	9B	28	5B	8A
) \$]	29	24	29	5D	8B
1 @	31	40	31	Hex	8C
2 &	32	26	32	Hex	8D
3 <	33	3C	33	Hex	8E
4 >	34	3E	34	Hex	8F
5 %	35	25	35	Hex	90
6 +	36	2B	36	Hex	91
7 -	37	2D	37	Hex	92
8 =	38	3D	38	Hex	93
9 ~	39	7E	39	Hex	94
0 #	30	23	30	Hex	95
a A	61	41	41	Hex	96
b B	62	42	42	Hex	97
c C	63	43	43	Hex	98
d D	64	44	44	Hex	99
e E	65	45	45	Hex	9A

Key	Normal	Shift	Lock	ALT	CTRL
f F	66	46	46	Hex	9B
g G	67	47	47	1C	9C
h H	68	48	48	1D	9D
i I	69	49	49	1E	9F
j J	6A	4A	4A	1F	A0
k K	6B	4B	4B	E0	A1
l L	6C	4C	4C	E1	A2
m M	6D	4D	4D	E2	A3
n N	6E	4E	4E	E3	A4
o O	6F	4F	4F	E4	A5
p P	70	50	50	E5	A6
q Q	71	51	51	E6	A7
r R	72	52	52	E7	A8
s S	73	53	53	F0	A9
t T	74	54	54	F1	AA
u U	75	55	55	F2	AB
v V	76	56	56	F3	AC
w W	77	57	57	F4	AD
x X	78	58	58	F5	AE
y Y	79	59	59	F6	AF
z Z	7A	5A	5A	F7	B0
' ! "	27	21	27	22	B1
, ;	2C	3B	2C	B2	B2
. : °	2E	3A	2E	F8	B3
Space	20	5F	20	07	B4
Enter	0D	0D	0C	00	B8

USER EDIT MODE

The host can capture user information entered using the KBC56A infrared keyboard. The host sends a message which contains editing fields. Subsequent user keyboard entry is then restricted to the editing fields. The user then enters data using the keyboard. When complete the user presses either ENTER or ESC. The host can then send a command to retrieve this data. A typical sequence of events using user edit mode :-

- Host sends prompt screen text and defines user edit area(s) using start and end markers (04H / 05H)
- Host sends User Edit Enable command (08H + 01H or 08H + 02H if the ASCII echo to host is required)
- Cursor is automatically enabled and user can edit text within edit markers using the KBC56A
- User presses ESC or ENTER on KBC56A and display sends 1BH or 0DH respectively to host
- Host can then send the read command (09H) and display sends entire screen contents (21 ASCII characters) to host
- Host disables User Edit Mode (08H + 00H) – cursor is automatically disabled

When user edit mode is enabled with echo enabled (08H + 02H) all ASCII codes received via the IR keyboard are sent to the host. When echo is disabled only the ENTER and ESC keys send data to the host. When entering ASCII data into the edit fields characters are overwritten and the cursor moves to the right. The cursor automatically moves from one edit field to the next. The LEFT and RIGHT keys can be used to move the cursor position within the field(s).

Example :-

