



## GENLINX™ // GX9533 Serial Digital 8x9 Crosspoint

### Features

- operation beyond 622Mb/s
- accepts SMPTE and PECL input levels
- fully differential signal path
- on-chip PECL current loads eliminate need for external pull-down resistors
- capable of driving 100Ω differential loads
- very low 500mW power consumption
- additional expansion port input for construction of larger matrices
- auxiliary monitoring output
- easy to configure
- double latched address inputs with separate load and configure
- TTL/CMOS compatible control logic inputs
- single 5V power supply

### Applications

- Serial digital video switching
- Datacom or telecom switching

### Description

The GX9533 is a high speed 8x9 serial digital crosspoint. An expansion input port eases the design of larger switching matrices by reducing PCB layers and eliminating the need for cascaded secondary switching. Decode logic and double level latching to configure the matrix are included on chip. Separate LOAD and CONFIGURE inputs allow for asynchronous configuration and synchronous switching. These latches can also be made transparent for asynchronous switching by pulling the LOAD and CONFIGURE pins high.

In the power saving (PS) mode, the GX9533 has a very low power consumption of 500mW. This is accomplished by driving a 400mV output swing into the on-chip 200Ω differential load termination in the expansion port of the next GX9533. This architecture provides a significant power savings and the elimination of external load resistors or impedance matching resistors. In applications where standard PECL levels are necessary, the GX9533 can be configured in "PECL Mode", to drive 800mVp-p into a 100Ω differential load. The power consumption in this mode increases to 860mW.

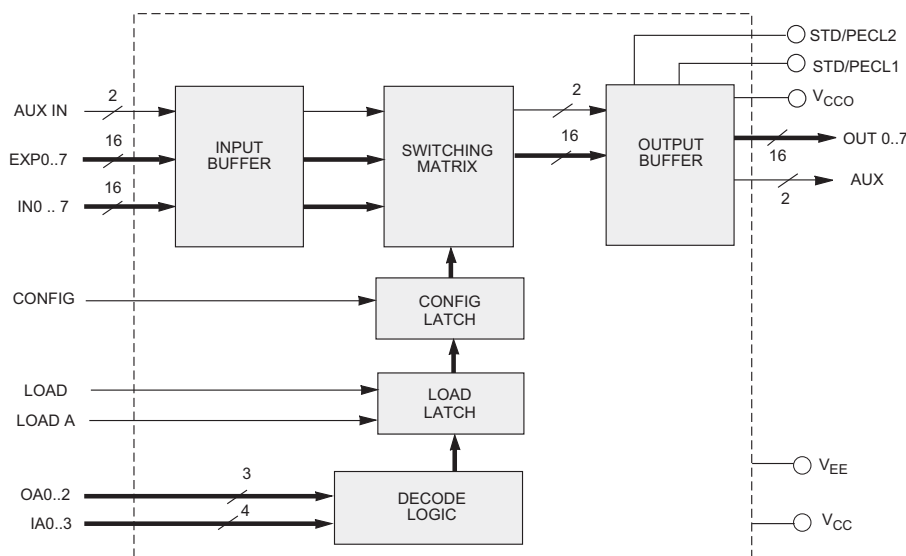


Figure A: GX9533 Functional Block Diagram

## Revision History

Version	Date	Changes and/or Modifications
4	November 2009	Updated to latest Gennum template and changed from document number 52141 to 8494.
3	August 1999	Changes to document format.
2	–	Revisions made.
1	April 1995	New document.

## Contents

Features.....	1
Applications.....	1
Description.....	1
Revision History .....	2
1. Pin Connections .....	3
1.1 Pin Connections .....	3
2. Electrical Characteristics .....	6
2.1 Absolute Maximum Ratings .....	6
2.2 DC Electrical Characteristics .....	6
2.3 Power Save 1 Mode .....	7
2.4 Power Save 2 Mode .....	7
2.5 PECL Mode .....	7
2.6 AC Electrical Characteristics .....	8
3. Detailed Description.....	9
3.1 Differential Inputs .....	9
3.2 I/O Address Selection .....	9
3.2.1 Stage One: Loading the Configuration Into Latches .....	9
3.2.2 Stage Two: Configuring the Matrix.....	10
3.3 Output Level Select .....	11
4. Using the GX9533 to Expand Larger Matrices.....	13
4.1 Bus Through™ Pin Connections .....	13
4.2 Expansion Port Input .....	13
5. Package Dimensions.....	14
6. Ordering Information.....	15

# 1. Pin Connections

## 1.1 Pin Connections

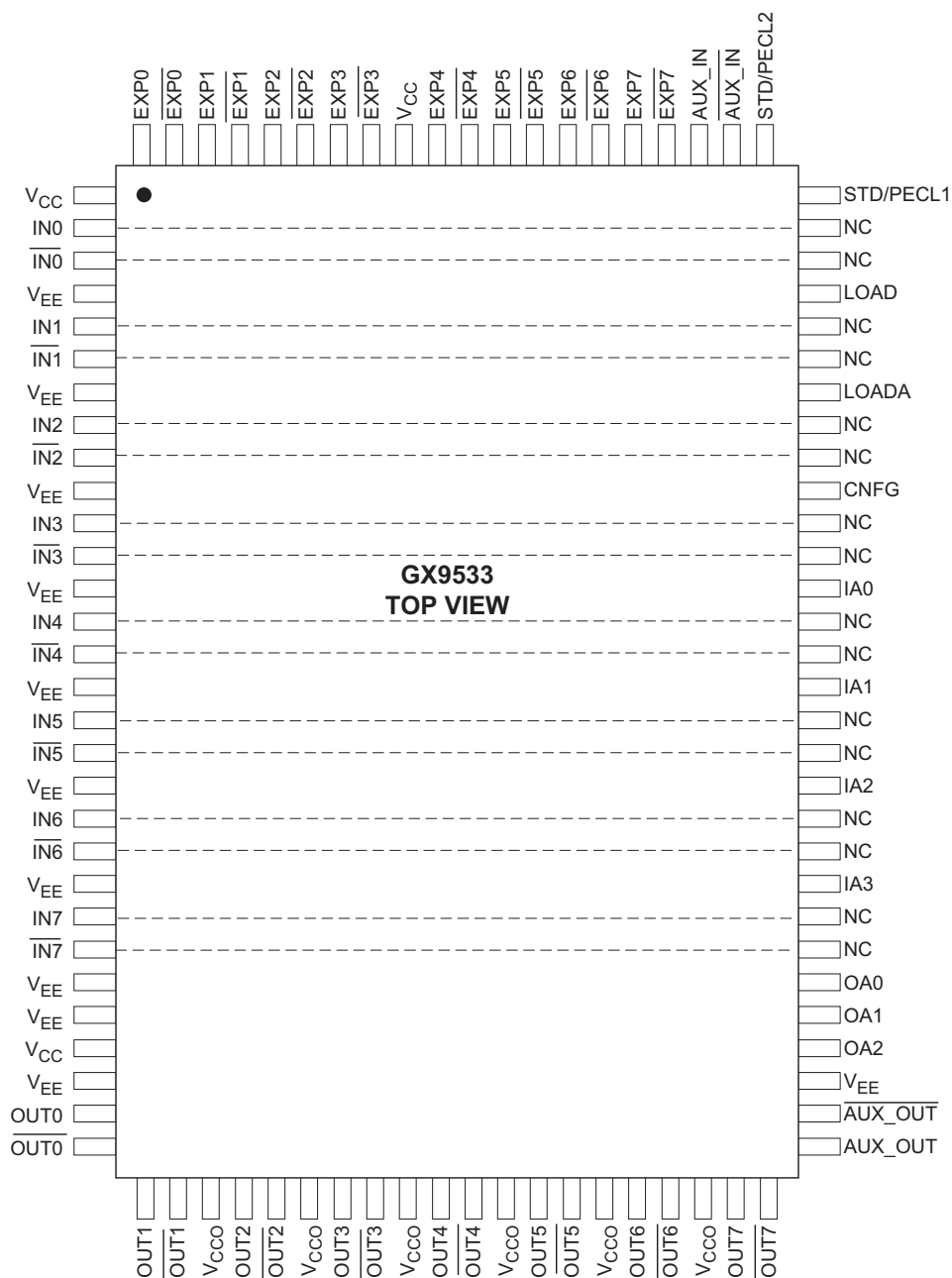
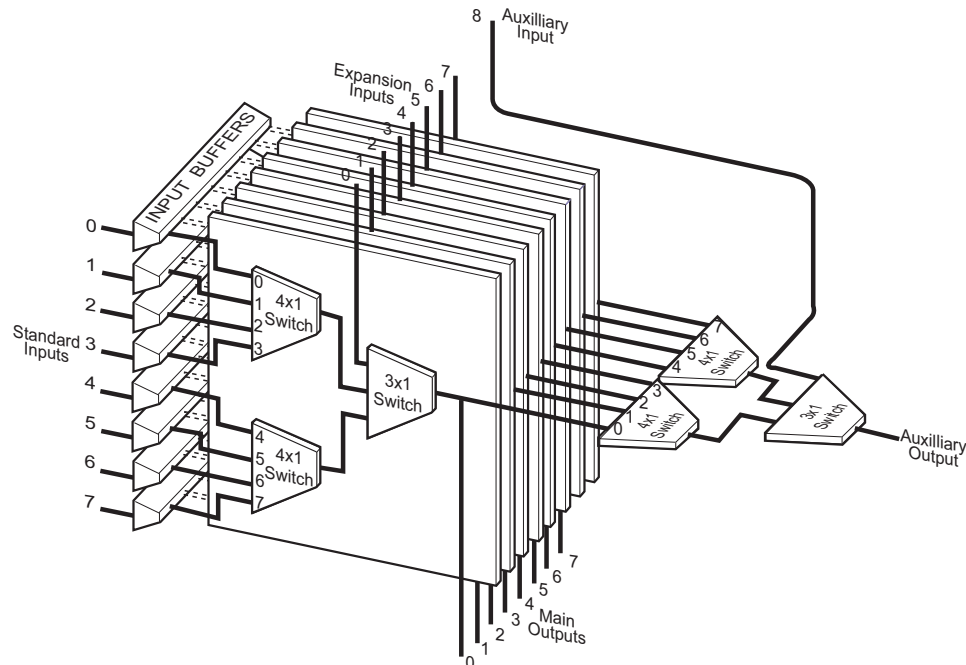


Figure 1-1: GX9533 Pin Connections

**Table 1-1: Pin Descriptions**

Symbol	Type	Description
IN0 to IN7, $\overline{\text{IN}}0$ to $\overline{\text{IN}}7$	I	Differential data inputs.
OUT0 to OUT7, $\overline{\text{OUT}}0$ to $\overline{\text{OUT}}7$	O	Differential data outputs.
AUX_OUT, $\overline{\text{AUX\_OUT}}$	O	Auxiliary port output.
AUX_IN, $\overline{\text{AUX\_IN}}$	I	Auxiliary port input.
OA0 to OA2	I	Output address select.
IA0 to IA3	I	Input address select.
LOAD	I	Loads input & output address.
LOADA	I	Loads auxiliary input address.
STD/ECL1, STD/ECL2		Resistor connection for Power Save mode or PECL mode. Refer to <a href="#">Table 3-3</a> .
CNFG	I	Switch configuration.
EXP0 to EXP7, $\overline{\text{EXP}}0$ to $\overline{\text{EXP}}7$	I	Expansion port inputs.
V <sub>CC</sub>		Positive power supply.
V <sub>CCO</sub>		Positive power supply (PECL outputs).
V <sub>EE</sub>		Negative power supply.



**Figure 1-2: Data Flow Diagram**

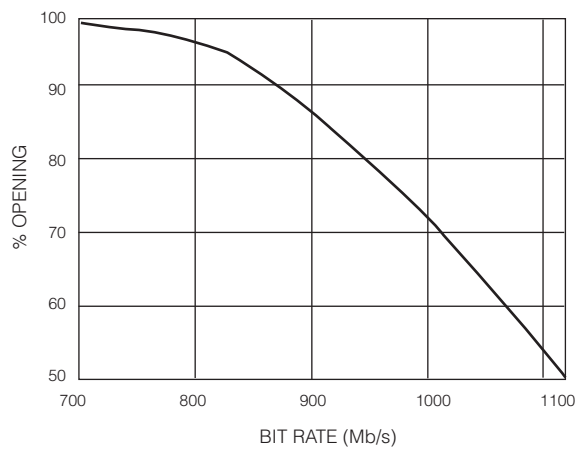


Figure 1-3: Typical Eye Opening vs Bit Rate

## 2. Electrical Characteristics

### 2.1 Absolute Maximum Ratings

Table 2-1 lists the absolute maximum ratings for the GX9533. Conditions exceeding the limits listed may cause permanent damage to the device. This is a stress rating only and functional operation of the device at these or any other conditions above those listed in the operational sections of this specification is not implied. Exposure to absolute maximum rating conditions for extended periods may affect device reliability.

**Table 2-1: Absolute Maximum Ratings**

Parameter	Value
Supply Voltage ( $V_S = V_{CC} - V_{EE}$ )	5.5V
Input Voltage Range (any input)	-0.3 to $(V_{CC} + 0.3)V$
Power Dissipation	975mW
Operating Temperature Range	0°C to 70°C
Storage Temperature Range	-65°C to +150°C
Lead Temperature Range (soldering, 10 sec)	260°C

### 2.2 DC Electrical Characteristics

Table 2-2 shows the DC electrical characteristics of the GX9533 where conditions are  $V_{CC} = 5V$ ,  $V_{EE} = 0V$ ,  $T_A = 0$  to 70°C, unless otherwise shown.

**Table 2-2: DC Electrical Characteristics**

Parameter		Conditions	Min	Typ	Max	Units
Supply Voltage		-	4.75	5.0	5.25	V
ECL Input Voltage Swing		-	200	800	1200	mV p-p
ECL Common Mode Input Voltage Range		with 1200mV input signal swing	2500	-	$V_{CC} - 600$	mV
Logic Input Voltage	High	-	2.0	-	$V_{CC}$	V
	Low	-	0	-	0.8	V

## 2.3 Power Save 1 Mode

Table 2-2 shows the Power Save 1 Mode electrical characteristics of the GX9533 where conditions are  $R_{SET} = 4k\Omega$  unless otherwise shown.

Table 2-3: Power Save 1 Mode

Parameter	Conditions	Min	Typ	Max	Units
Supply Current	$R_L = 100\Omega$	-	115	150	mA
Output Common Mode Voltage		$V_{CC}-1200$	-	$V_{CC}-800$	mV
Output Voltage Swing		300	450	600	mV
Output Voltage	High	$V_{CC}-950$	-	$V_{CC}-600$	mV
	Low	$V_{CC}-1400$	-	$V_{CC}-1000$	mV

## 2.4 Power Save 2 Mode

Table 2-2 shows the Power Save 1 Mode electrical characteristics of the GX9533 where conditions are  $R_{SET} = 6k\Omega$  unless otherwise shown.

Table 2-4: Power Save 2 Mode

Parameter	Conditions	Min	Typ	Max	Units
Supply Current	$R_L = 200\Omega$	-	100	130	mA
Output Common Mode Voltage		$V_{CC}-1200$	-	$V_{CC}-800$	mV
Output Voltage Swing		300	450	600	mV
Output Voltage	High	$V_{CC}-950$	-	$V_{CC}-600$	mV
	Low	$V_{CC}-1400$	-	$V_{CC}-1000$	mV

## 2.5 PECL Mode

Table 2-2 shows the PECL Mode electrical characteristics of the GX9533 where conditions are  $R_{SET} = 6k\Omega$  unless otherwise shown.

Table 2-5: PECL Mode

Parameter	Conditions	Min	Typ	Max	Units
Supply Current	$R_L = 100\Omega$	-	170	185	mA
Output Common Mode Voltage		$V_{CC}-1450$	-	$V_{CC}-1050$	mV

**Table 2-5: PECL Mode (Continued)**

Parameter		Conditions	Min	Typ	Max	Units
Output Voltage Swing			700	800	900	mV
Output Voltage	High		$V_{CC}-1200$	-	$V_{CC}-650$	mV
	Low		$V_{CC}-1850$	-	$V_{CC}-1450$	mV

## 2.6 AC Electrical Characteristics

Table 2-2 shows the AC electrical characteristics of the GX9533 where conditions are  $V_{CC} = 5V$ ,  $V_{EE} = 0V$ ,  $T_A = 0$  to  $70^{\circ}C$ , unless otherwise shown.

**Table 2-6: AC Electrical Characteristics**

Parameter		Symbol	Conditions	Min	Typ	Max	Units
Maximum Input Data Rate		-	For 90% eye opening	-	850	-	Mb/s
Additive Jitter See Note 1.	Standard Input	-	143 to 622 Mb/s, all hostile crosstalk	-	80	-	ps p-p
	Expansion Input	-		-	70	-	ps p-p
Data In to Data Out Delay	Standard Input	$t_{DLY}$	Average of all channels	-	1.7	-	ns
	Expansion Input		-	-	1.1	-	ns
Propagation Delay Match	Standard Input	-	-	-	350	-	ps
	Expansion Input	-	-	-	250	-	ps
CONFIGURE to Data Out Delay	Main Out	$t_{CD}$	-	-	10	-	ns
	AUX Out		-	-	11	-	ns
LOAD/LOADA Pulse Width		$t_{LP}$	-	20	-	-	ns
CONFIGURE Pulse Width		$t_{CP}$	-	20	-	-	ns
$IA_N$ to LOAD/LOADA High Setup Time		$t_{ILS}$	-	30	-	-	ns
LOAD/LOADA to $IA_N$ Low Hold Time		$t_{ILH}$	-	0	-	-	ns
$OA_N$ to LOAD High Setup Time		$t_{OLS}$	-	30	-	-	ns
LOAD to $OA_N$ Low Hold Time		$t_{OLH}$	-	0	-	-	ns
LOAD High to CONFIGURE High		$t_{LC}$	-	0	-	-	ns
Output Rise/Fall Time		-	-	-	700	-	ps

NOTE:

1. Use RMS addition to calculate additive jitter through cascaded devices.

## 3. Detailed Description

### 3.1 Differential Inputs

The inputs to the GX9533 will accept both SMPTE 259M as well as PECL input levels. The fully differential data path provides low jitter data rates of up to 700Mb/s.

The main inputs (IN0..7) and expansion inputs (EXP0..7) are normally connected to a biased differential data source. The GX9533 inputs are not self biased, so unused inputs should be connected as shown in [Figure 3-1](#) or [Figure 3-2](#).

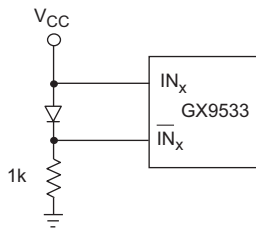


Figure 3-1: Preferred Termination Of Unused Inputs

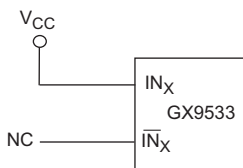


Figure 3-2: Alternate Termination of Unused Inputs

Terminating the inputs as shown in [Figure 3-1](#) will provide the highest noise immunity, since there is no possibility of noise coupling into the unconnected input pin.

### 3.2 I/O Address Selection

The GX9533 has a versatile LOAD/CONFIGURE architecture which simplifies IN/OUT switch configuration.

An output is normally connected to an input by a two stage process:

#### 3.2.1 Stage One: Loading the Configuration Into Latches

1. The output address is selected on the OA pins as shown in [Table 3-1](#).
2. The input address is selected on the IA pins as shown in [Table 3-2](#).
3. A LOAD pulse then transfers the output and input addresses into the GX9533 LOAD latch.

The above three steps can be repeated up to eight times in order to configure the latch for all eight outputs.

**Table 3-1: Output Address Selection**

OA2	OA1	OA0	OUTPUT PORT
0	0	0	0
0	0	1	1
0	1	0	2
0	1	1	3
1	0	0	4
1	0	1	5
1	1	0	6
1	1	1	7

**Table 3-2: Input Source Address Selection**

IA3	IA2	IA1	IA0	INPUT PORT
0	0	0	0	0
0	0	0	1	1
0	0	1	0	2
0	0	1	1	3
0	1	0	0	4
0	1	0	1	5
0	1	1	0	6
0	1	1	1	7
1	0	X	X	EXP
1	1	X	X	Quiet Mode

During step 3 above, if the LOADA pulse is also strobed, the latch is configured to connect the selected input to the ninth, auxiliary output.

Note that a QUIET mode is available as shown in [Table 3-2](#). In QUIET mode, the outputs are latched in a DC state with  $OUT_X = 1$  and  $\overline{OUT}_X = 0$ .

### 3.2.2 Stage Two: Configuring the Matrix

A CONFIGURE strobe is applied to transfer the contents of the LOAD latch into the CONFIG latch. This action will cause the data flow through the GX9533 to be switched to the new configuration. Refer to [Figure 3-4](#) for detailed timing information.

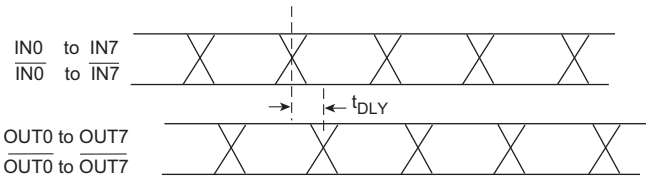
Note that any single output can be asynchronously switched by having LOAD (or LOADA if desired) held high while CONFIG is strobed.

# 3.3 Output Level Select

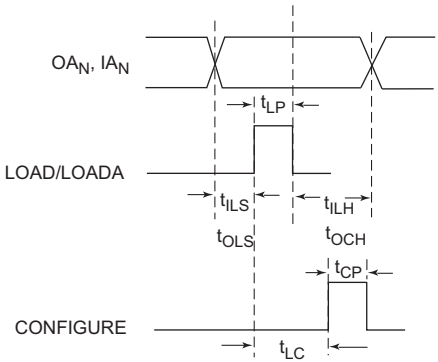
A single resistor,  $R_{SET}$ , is used to set the amplitude of all differential outputs. Table 3-3 shows the value of  $R_{SET}$  vs output drive capability.

**Table 3-3:  $R_{SET}$  vs  $V_{OUT}$**

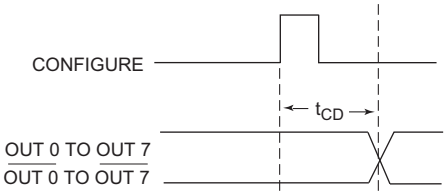
$R_{SET}$	$V_{OUT}$ (mV)	OUTPUT $R_L$	MODE
2k	800	100	PECL
4k	450	100	Power Save 1
6k	450	200	Power Save 2



**Figure 3-3: GX9533 Data Latency**



**Figure 3-4: LOAD/LOADA and Configure Timing**



**Figure 3-5: Configure to Data Out Delay**

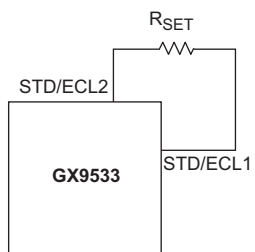


Figure 3-6: GX9533  $R_{SET}$  Connection

## 4. Using the GX9533 to Expand Larger Matrices

The GX9533 pin-out and architecture provides a number of advantages over other crosspoint switches in the area of switching matrix board layout.

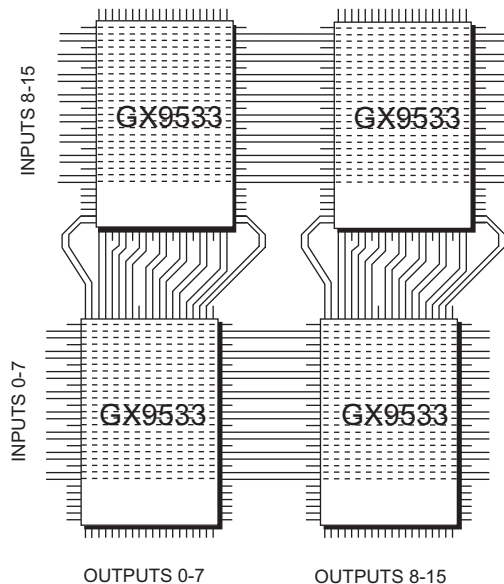


Figure 4-1: Crosspoint Matrix Expansion - 16x16 Crosspoint Matrix

### 4.1 Bus Through™ Pin Connections

To easily facilitate a switching matrix design where inputs can be bussed across a matrix of crosspoint devices, Gennum's crosspoint device has "NC" pins opposite the input pins as shown by the dotted lines in the pin-out diagram above. This design allows bussing of inputs without having to use "vias" to get below the top layer of the printed circuit board.

### 4.2 Expansion Port Input

The expansion inputs provide the following benefits:

- by not having to run traces from the outputs of the crosspoint switch to a common output bus, crosstalk between output channels can be greatly reduced.
- fewer circuit board layers are required because the outputs of each device simply line up
- there are no transmission line effects caused by connecting High-Z outputs to an output bus
- because the output signal is being routed from the top of the switching matrix to the bottom through the devices, inputs can be simply bussed across the board without having to worry about input/output crosstalk.

## 5. Package Dimensions

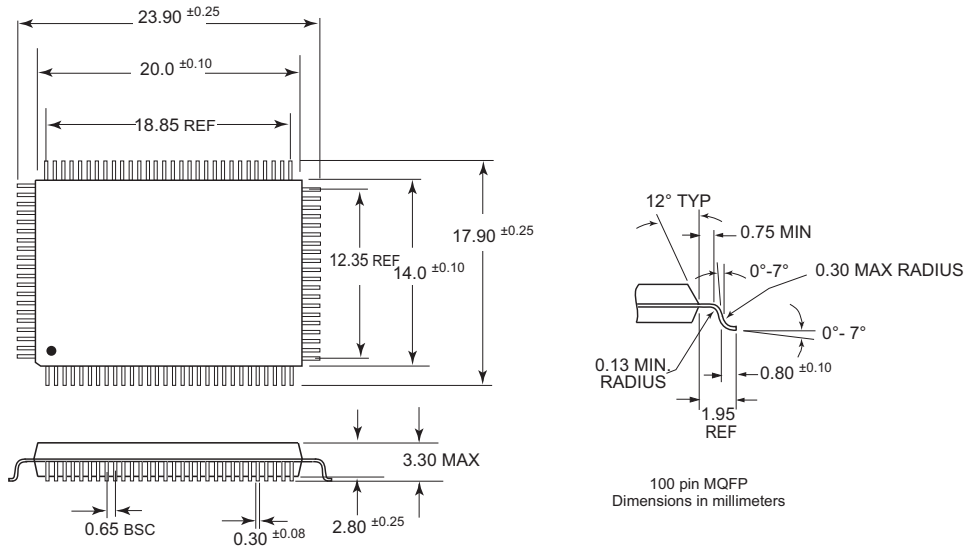


Figure 5-1: Package Dimensions

## 6. Ordering Information

Table 6-1: Ordering Information

Part Number	Package	Temperature Range
GX9533-CQY	100-Pin MQFP Tray	0°C to 70°C
GX9533-CTY	100-Pin MQFP Tape	0°C to 70°C

### DOCUMENT IDENTIFICATION DATA SHEET

The product is in production. Gennum reserves the right to make changes to the product at any time without notice to improve reliability, function or design, in order to provide the best product possible.

### CAUTION

ELECTROSTATIC SENSITIVE DEVICES

DO NOT OPEN PACKAGES OR HANDLE EXCEPT AT A  
STATIC-FREE WORKSTATION



### GENNUM CORPORATE HEADQUARTERS

4281 Harvester Road, Burlington, Ontario L7L 5M4 Canada

Phone: +1 (905) 632-2996

E-mail: [corporate@gennum.com](mailto:corporate@gennum.com)

Fax: +1 (905) 632-2055

[www.gennum.com](http://www.gennum.com)

### OTTAWA

232 Herzberg Road, Suite 101  
Kanata, Ontario K2K 2A1  
Canada

Phone: +1 (613) 270-0458

Fax: +1 (613) 270-0429

### CALGARY

3553 - 31st St. N.W., Suite 210  
Calgary, Alberta T2L 2K7  
Canada

Phone: +1 (403) 284-2672

### UNITED KINGDOM

North Building, Walden Court  
Parsonage Lane,  
Bishop's Stortford Hertfordshire, CM23 5DB  
United Kingdom

Phone: +44 1279 714170

Fax: +44 1279 714171

### INDIA

#208(A), Nirmala Plaza,  
Airport Road, Forest Park Square  
Bhubaneswar 751009  
India

Phone: +91 (674) 653-4815

Fax: +91 (674) 259-5733

### SNOWBUSH IP - A DIVISION OF GENNUM

439 University Ave. Suite 1700  
Toronto, Ontario M5G 1Y8  
Canada

Phone: +1 (416) 925-5643

Fax: +1 (416) 925-0581

E-mail: [sales@snowbush.com](mailto:sales@snowbush.com)

Web Site: <http://www.snowbush.com>

### MEXICO

288-A Paseo de Maravillas  
Jesus Ma., Aguascalientes  
Mexico 20900

Phone: +1 (416) 848-0328

### JAPAN KK

Shinjuku Green Tower Building 27F  
6-14-1, Nishi Shinjuku  
Shinjuku-ku, Tokyo, 160-0023  
Japan

Phone: +81 (03) 3349-5501

Fax: +81 (03) 3349-5505

E-mail: [gennum-japan@gennum.com](mailto:gennum-japan@gennum.com)

Web Site: <http://www.gennum.co.jp>

### TAIWAN

6F-4, No.51, Sec.2, Keelung Rd.  
Sinyi District, Taipei City 11502  
Taiwan R.O.C.

Phone: (886) 2-8732-8879

Fax: (886) 2-8732-8870

E-mail: [gennum-taiwan@gennum.com](mailto:gennum-taiwan@gennum.com)

### GERMANY

Hainbuchenstraße 2  
80935 Muenchen (Munich), Germany

Phone: +49-89-35831696

Fax: +49-89-35804653

E-mail: [gennum-germany@gennum.com](mailto:gennum-germany@gennum.com)

### NORTH AMERICA WESTERN REGION

691 South Milpitas Blvd., Suite #200  
Milpitas, CA 95035  
United States

Phone: +1 (408) 934-1301

Fax: +1 (408) 934-1029

E-mail: [naw\\_sales@gennum.com](mailto:naw_sales@gennum.com)

### NORTH AMERICA EASTERN REGION

4281 Harvester Road  
Burlington, Ontario L7L 5M4  
Canada

Phone: +1 (905) 632-2996

Fax: +1 (905) 632-2055

E-mail: [nae\\_sales@gennum.com](mailto:nae_sales@gennum.com)

### KOREA

8F Jinnex Lakeview Bldg.  
65-2, Bangidong, Songpagu  
Seoul, Korea 138-828

Phone: +82-2-414-2991

Fax: +82-2-414-2998

E-mail: [gennum-korea@gennum.com](mailto:gennum-korea@gennum.com)

Gennum Corporation assumes no liability for any errors or omissions in this document, or for the use of the circuits or devices described herein. The sale of the circuit or device described herein does not imply any patent license, and Gennum makes no representation that the circuit or device is free from patent infringement.

All other trademarks mentioned are the properties of their respective owners.

GENNUM and the Gennum logo are registered trademarks of Gennum Corporation.

© Copyright 1995 Gennum Corporation. All rights reserved.

[www.gennum.com](http://www.gennum.com)