

# **Service Manual**

# **H-MS1107**

# SERVICE MANUAL

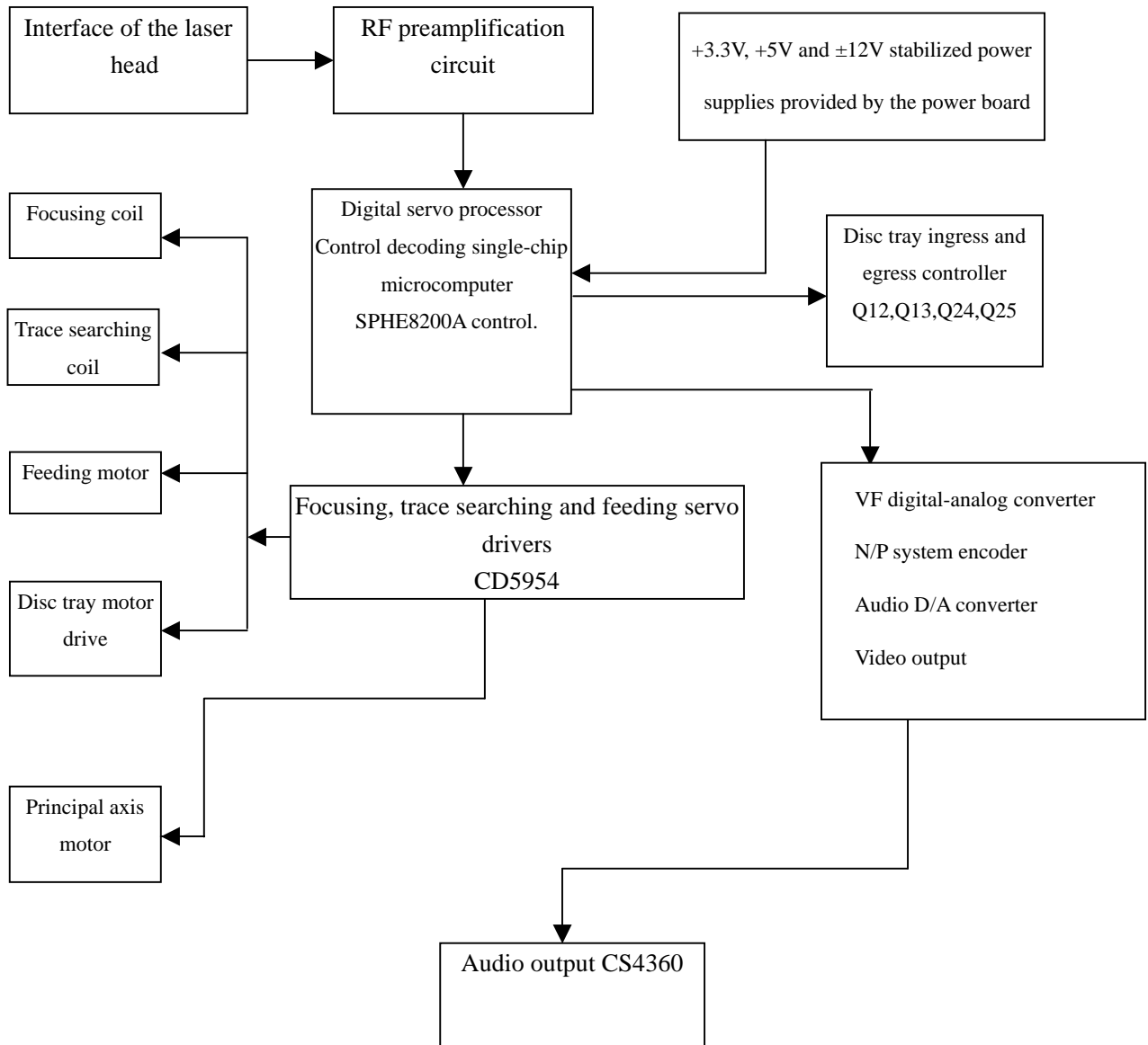
DVD PLAYER

(For Sunplus)

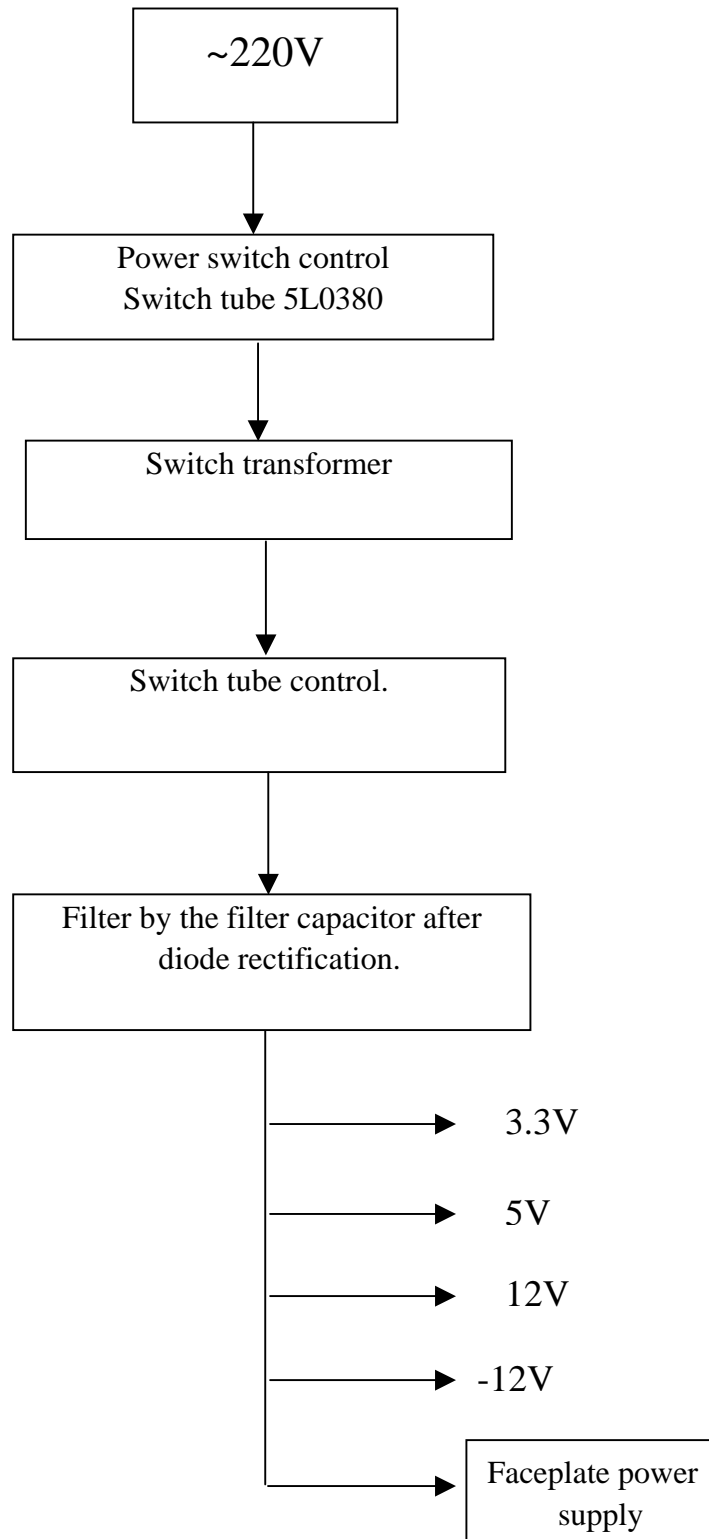
# Contents

Front cover .....	01-01
Contents.....	02-02
Block diagrams for the DVD player .....	03-08
Major functions of the IC of the DVD player .....	15-15
Maintenance procedures for the DVD player .....	16-23

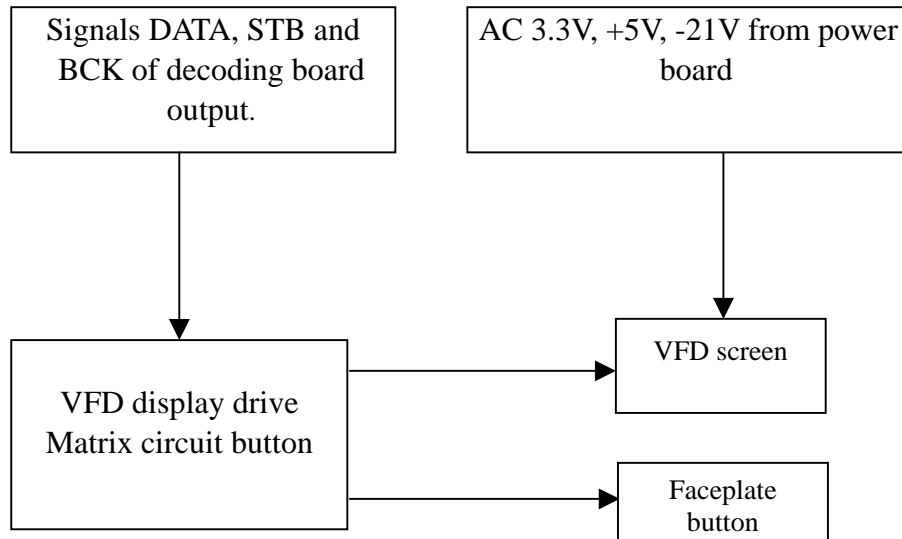
## Block diagram for the operating principle of the DVD decoding board



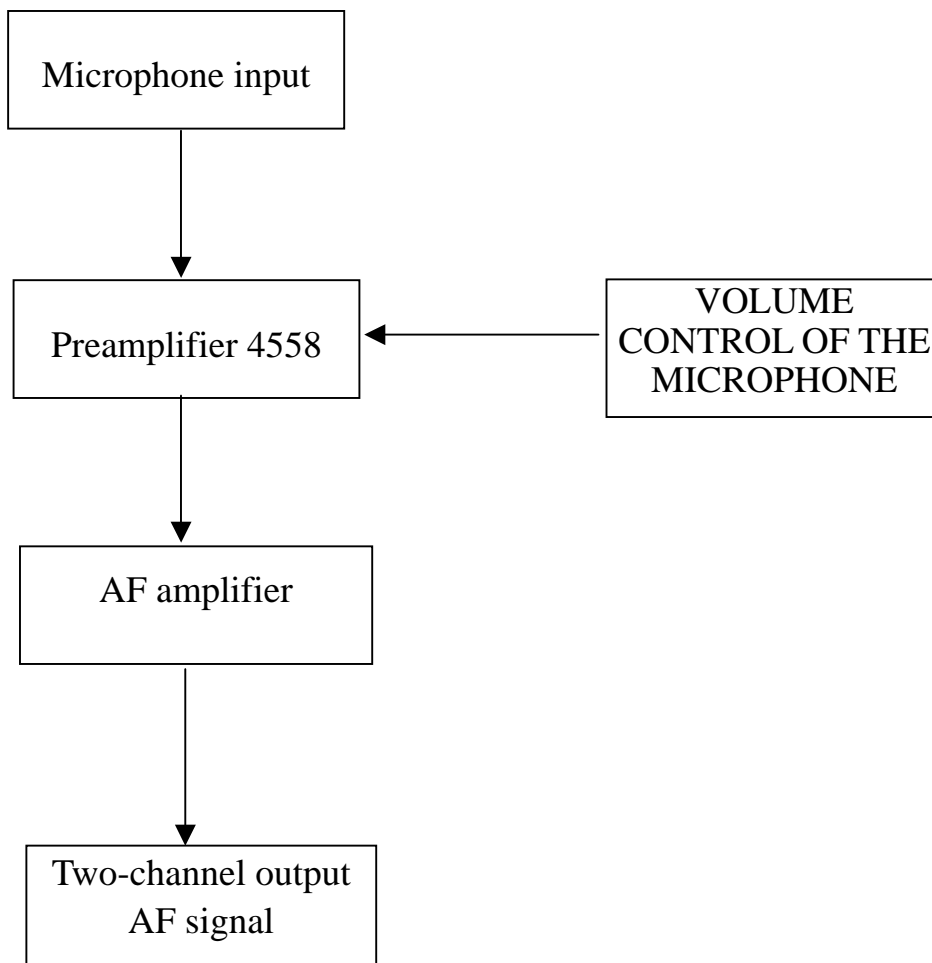
## Block diagram for the power supply part of the DVD player



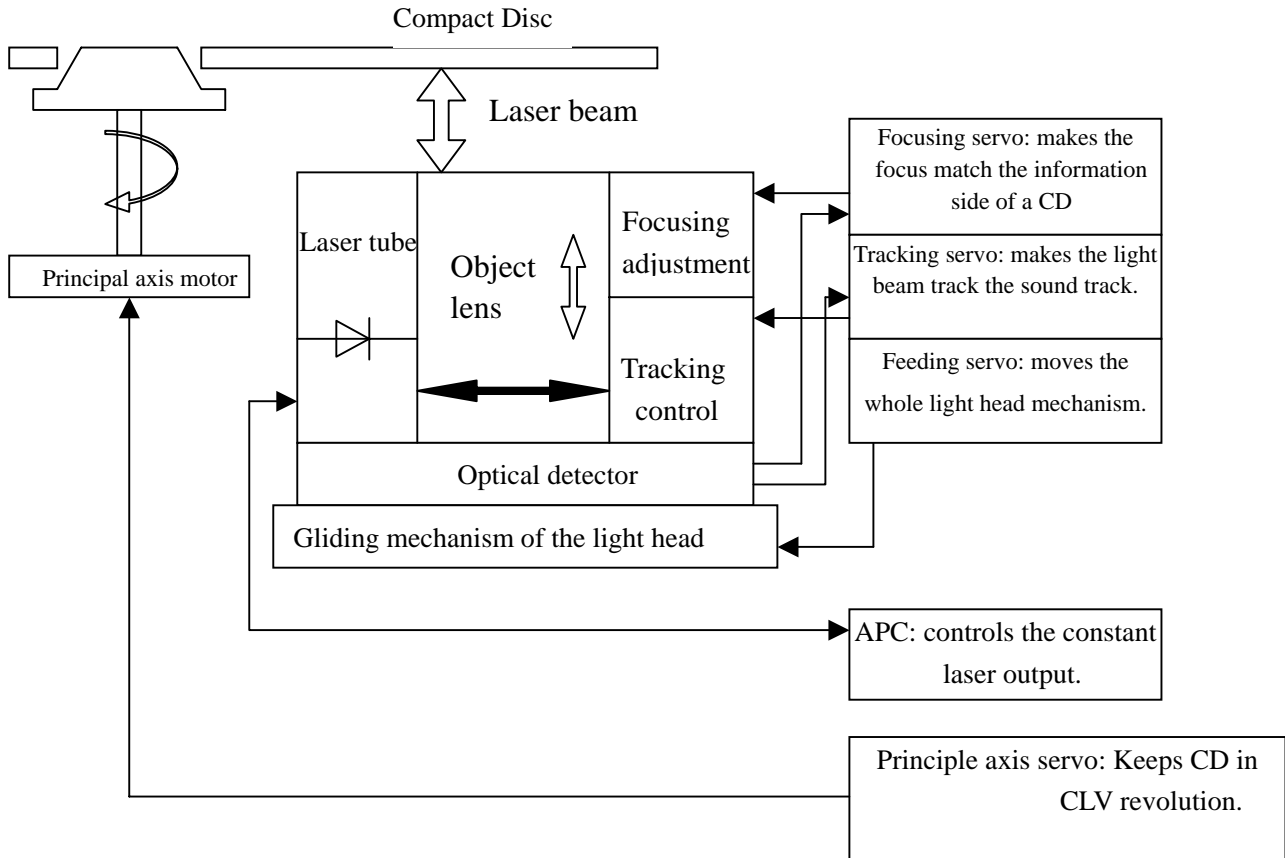
## Block diagram for the faceplate part of the DVD player



## Block diagram for the karaoke part of the DVD player

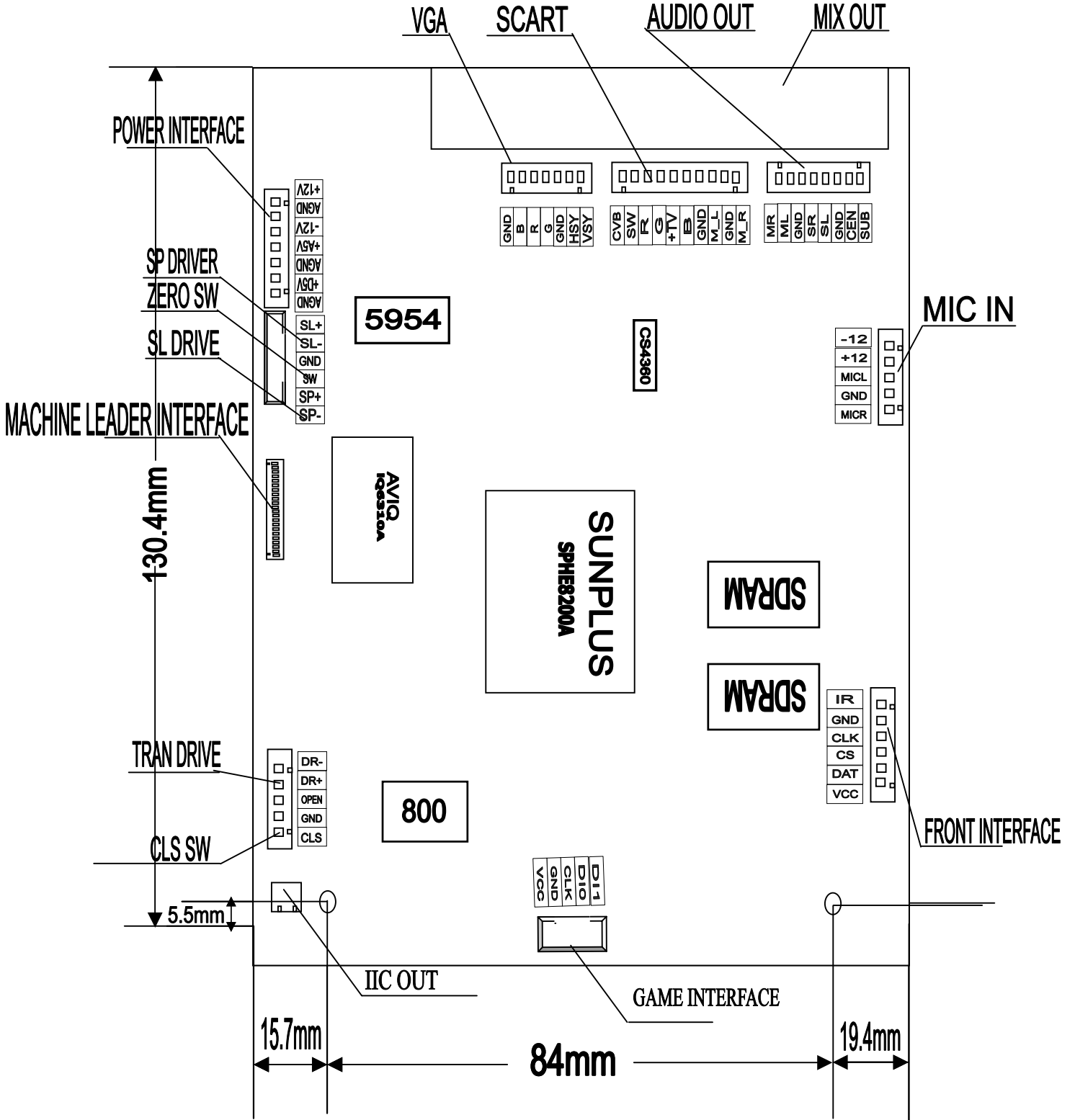


# Diagram of the servo mechanism of the DVD player





# Major functions of the IC feet



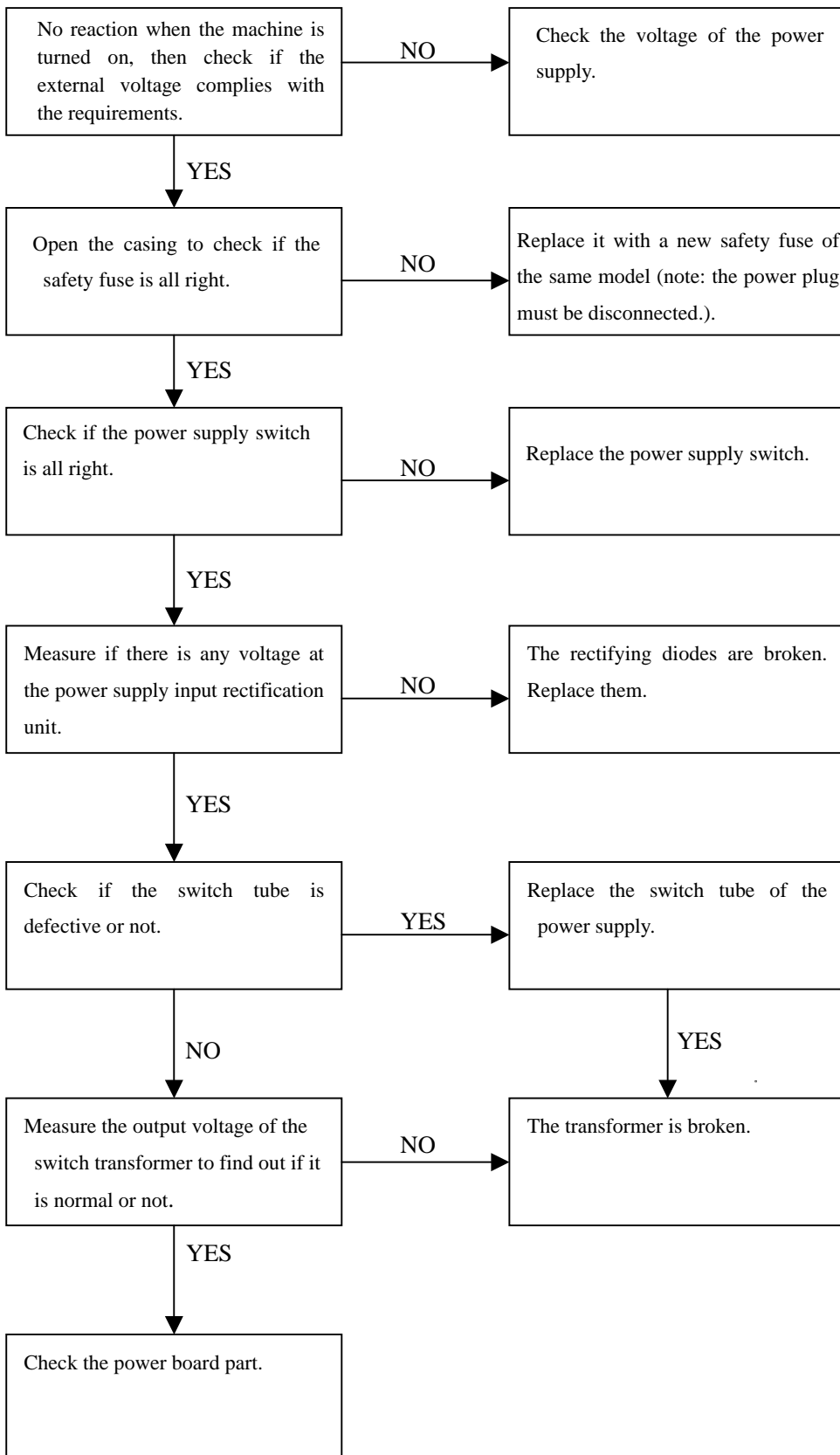
ED86 interface figure

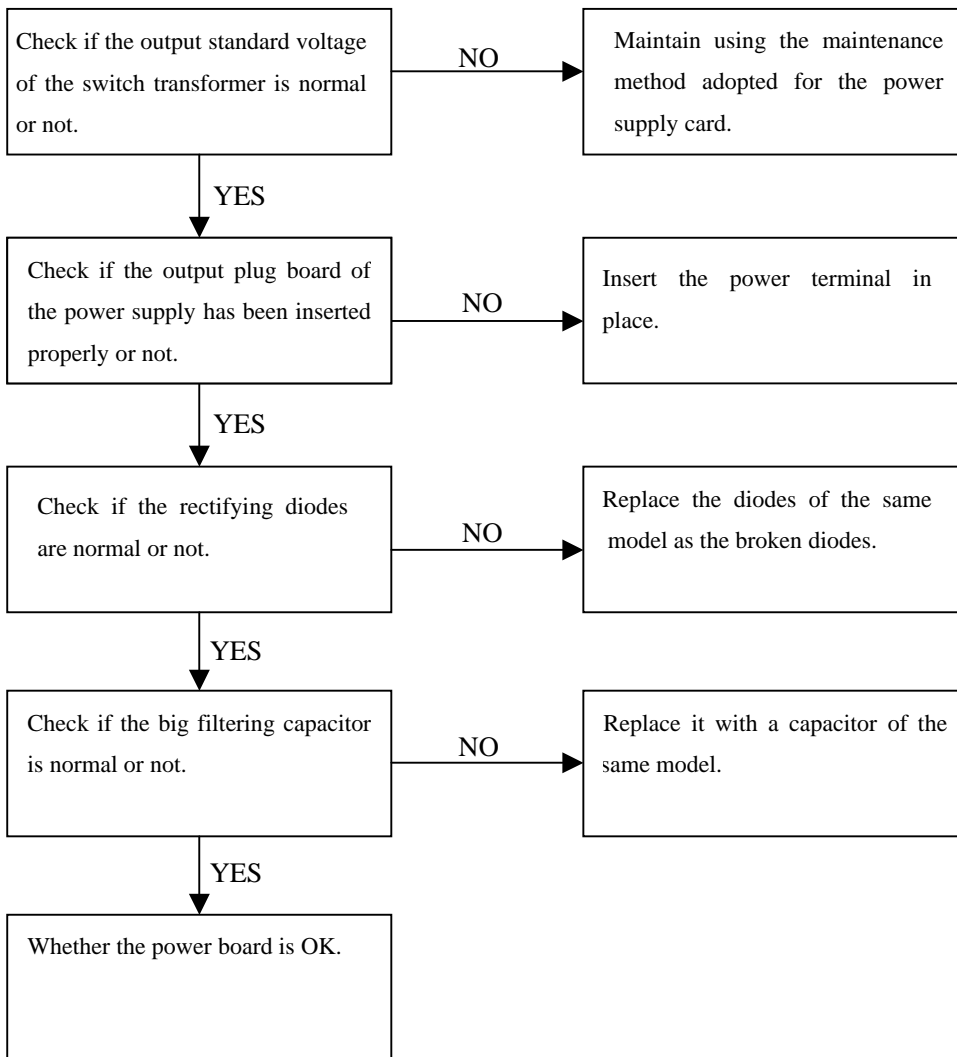
1. SPHE6300A function: RF single preamplifier.
2. SPHE8200A function: digital signal processor; central processing; MPEG decoding, VF coder.
3. 5954 function: drive chip.
4. CS4360; audio D/A converter;
5. KM16x256K function: random dynamic processor.
6. 29F040A function: flash memory (FLASH).

**Other ICs:**

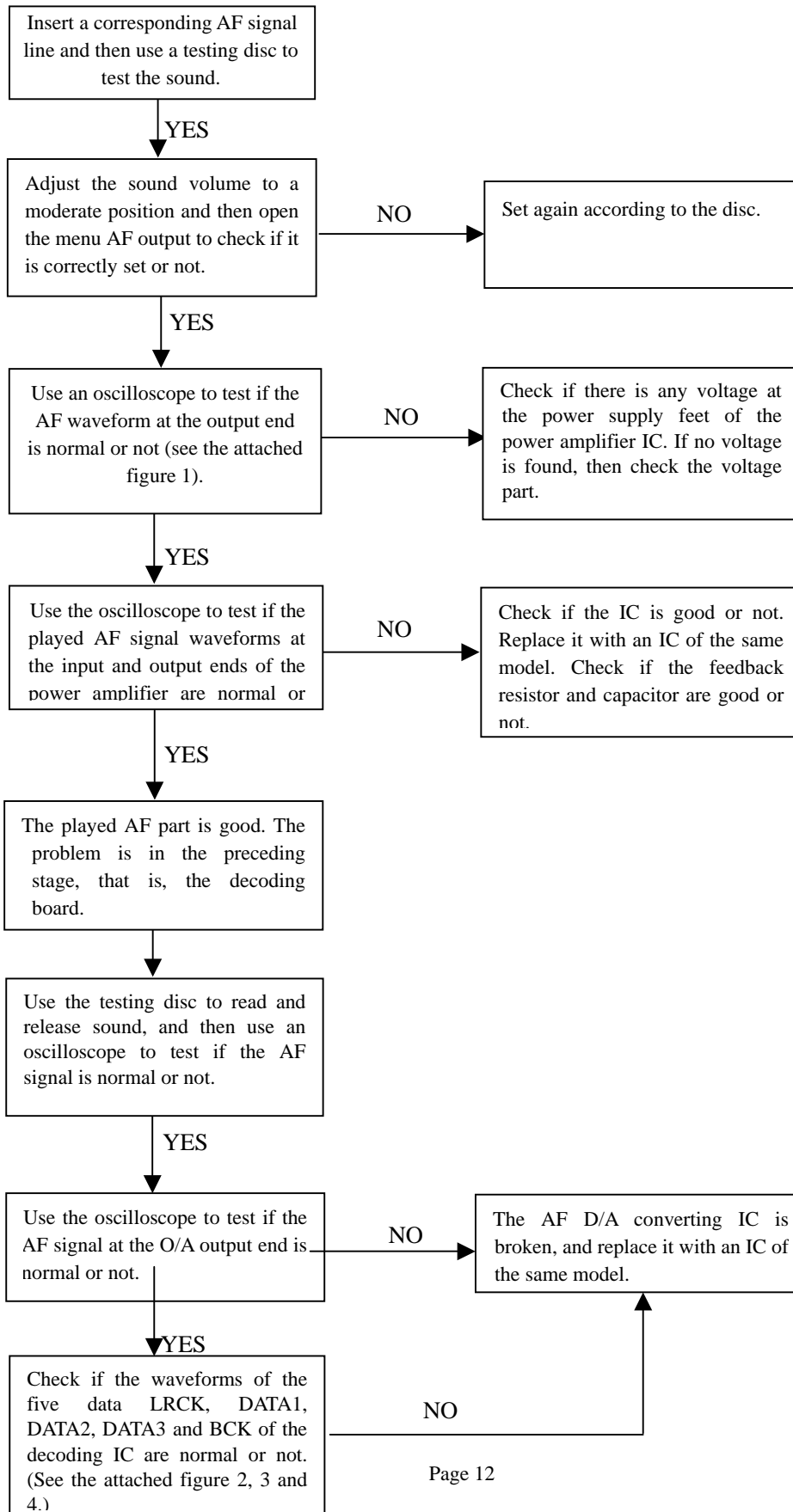
7. 16312 function: IC faceplate function control.
8. 4558 function: operation amplifier.

**Maintenance procedure for the power supply part is as follows:**

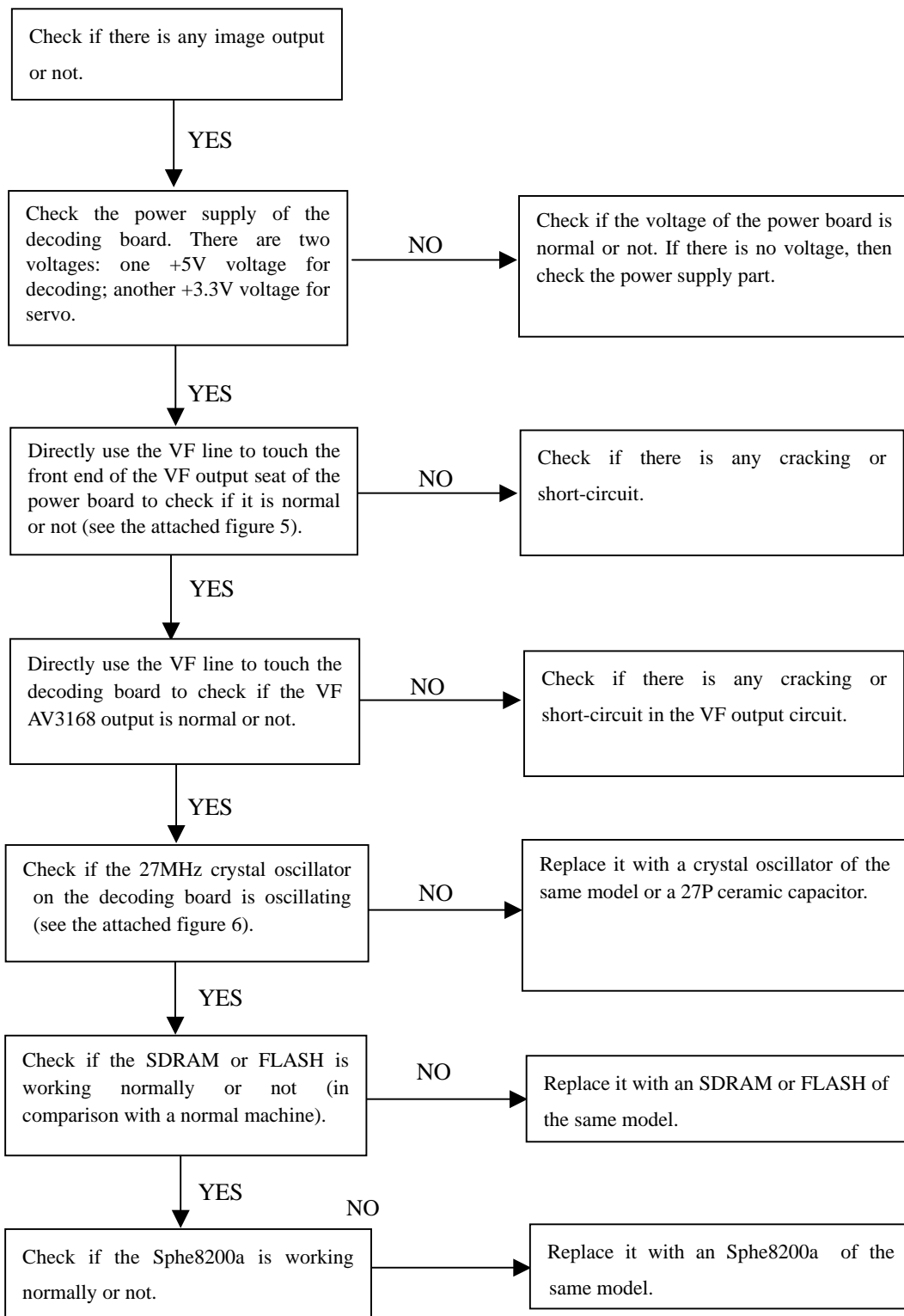




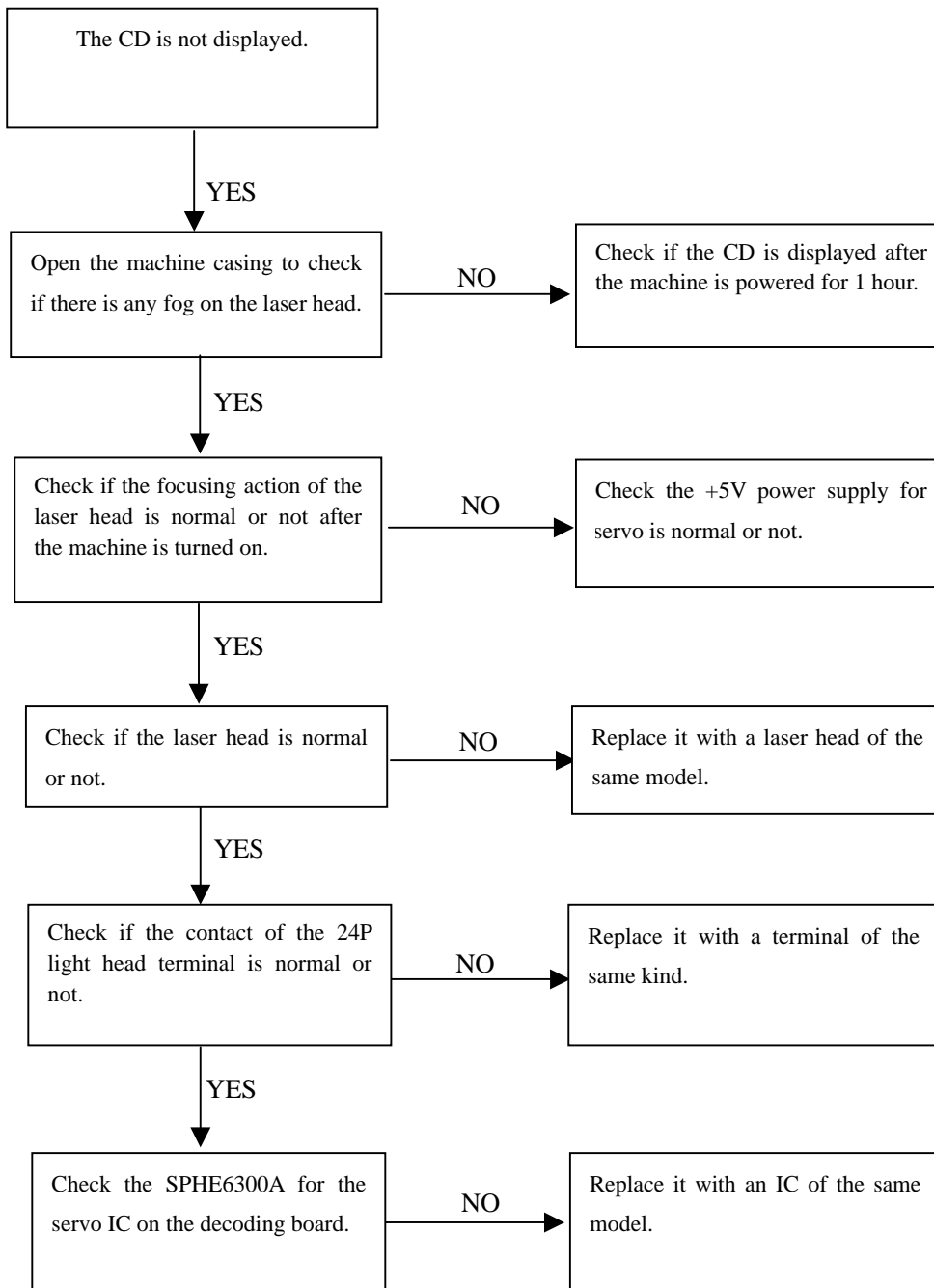
## Maintenance procedure for the AF part:



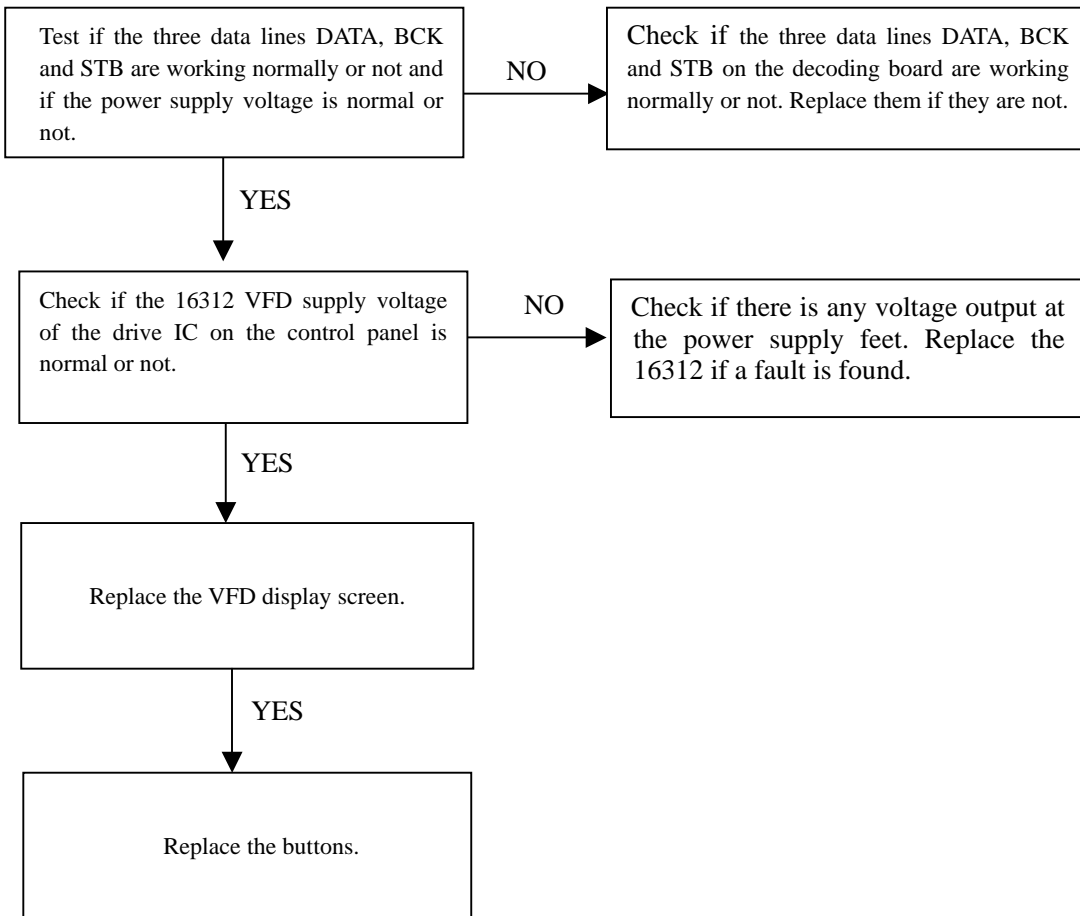
**Maintenance procedure for the VF part is as follows:**



**Maintenance procedure for the servo part of the decoding board is as follows:**

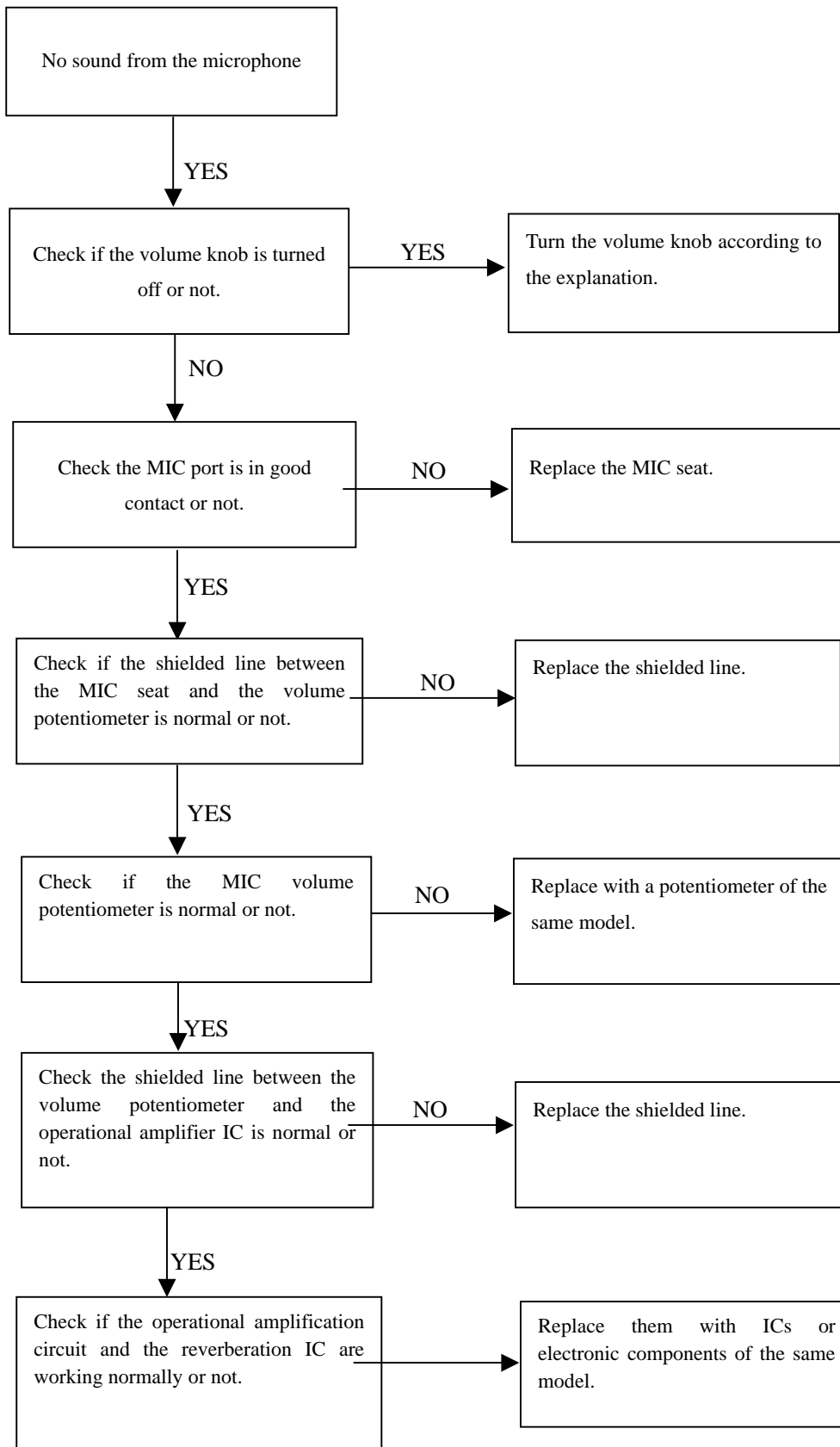


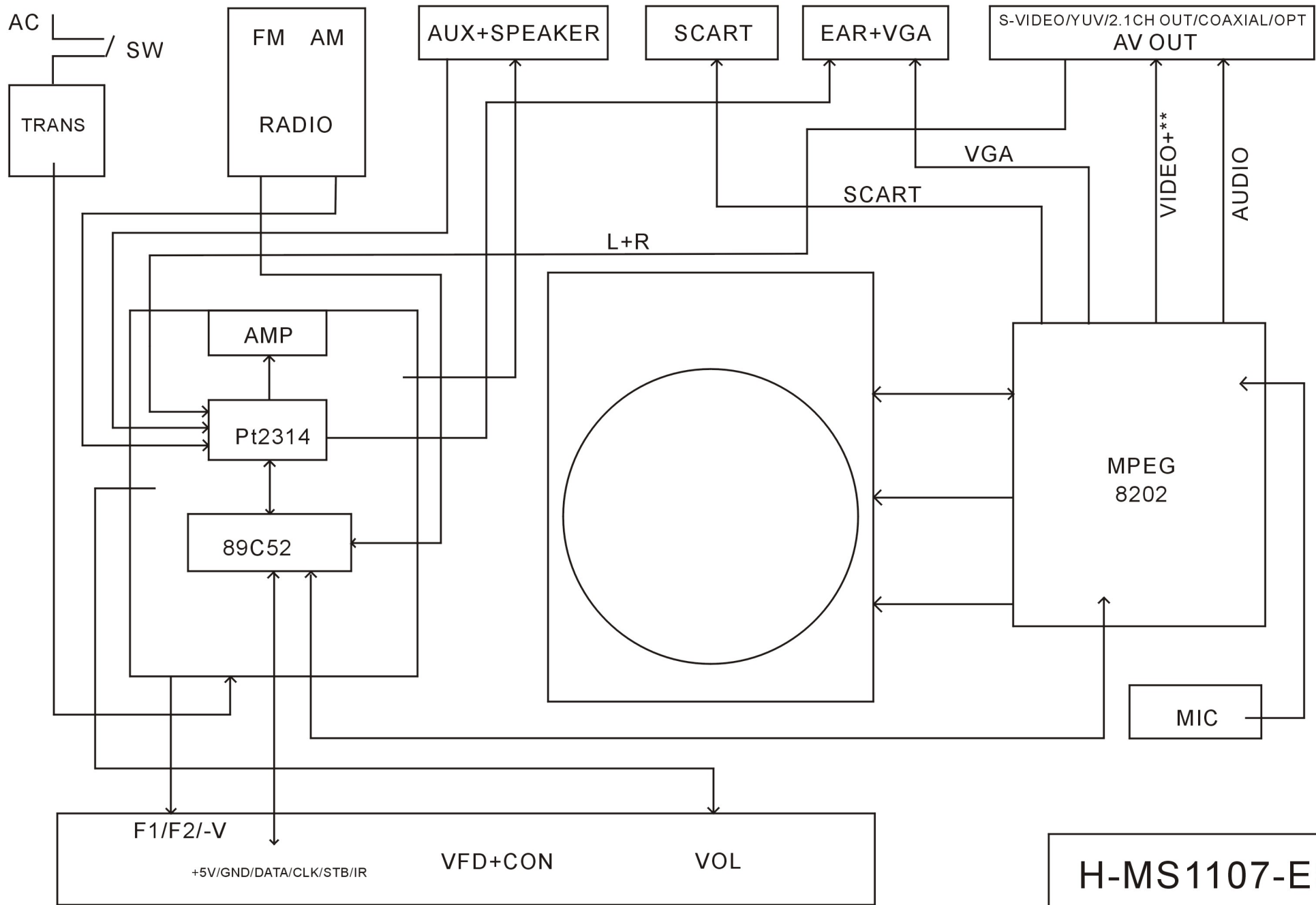
**Maintenance procedure for the front control panel is as follows:**



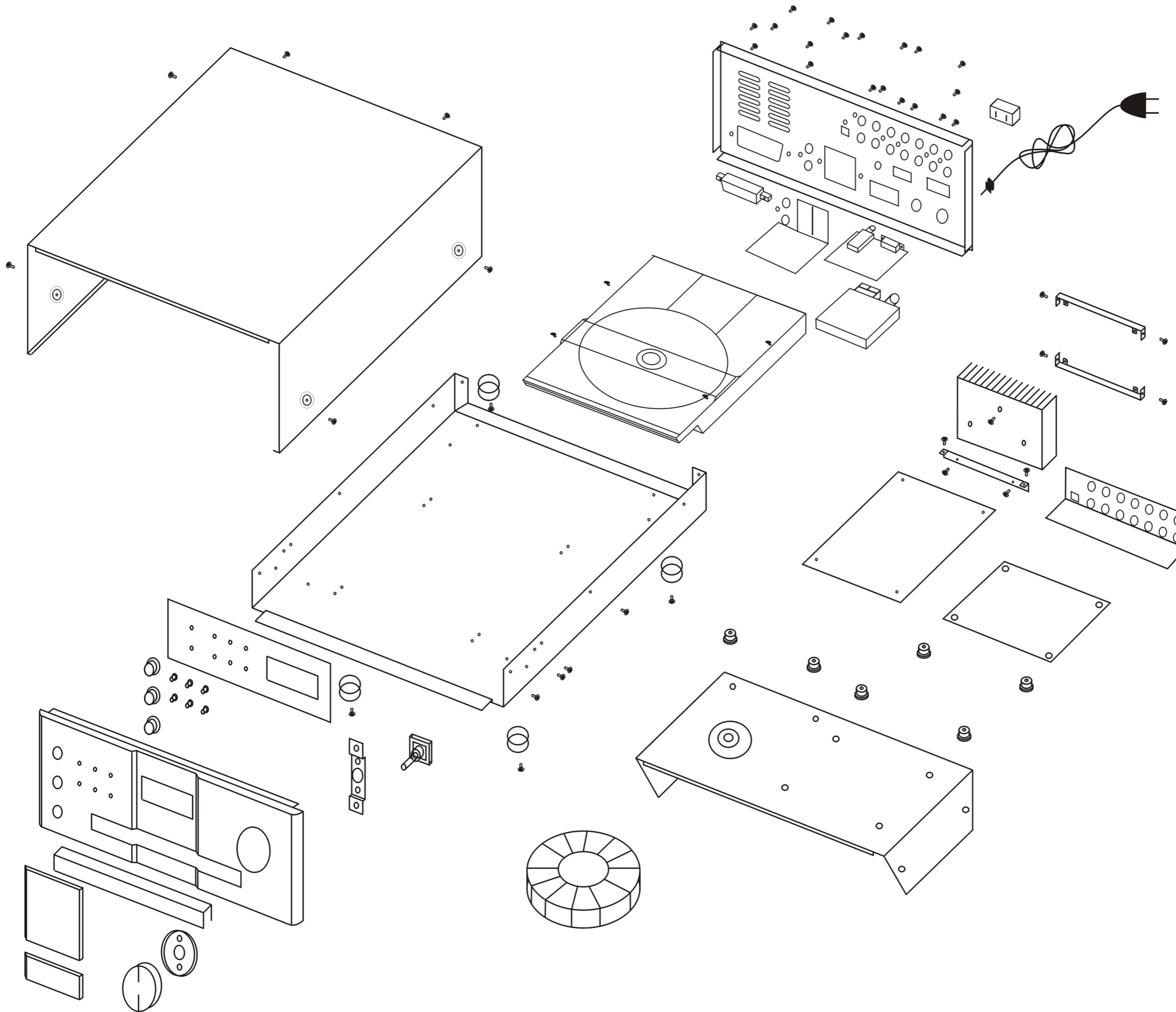


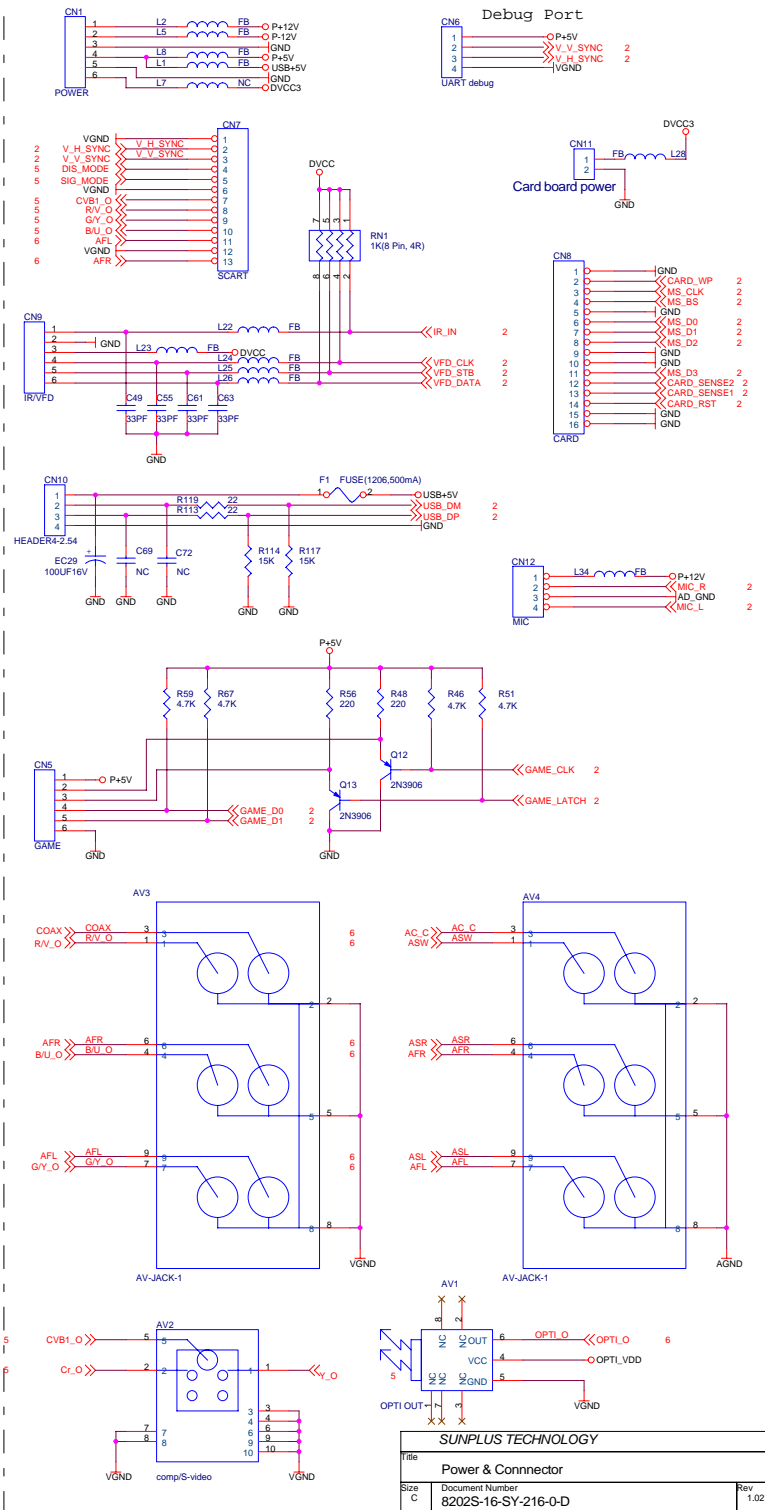
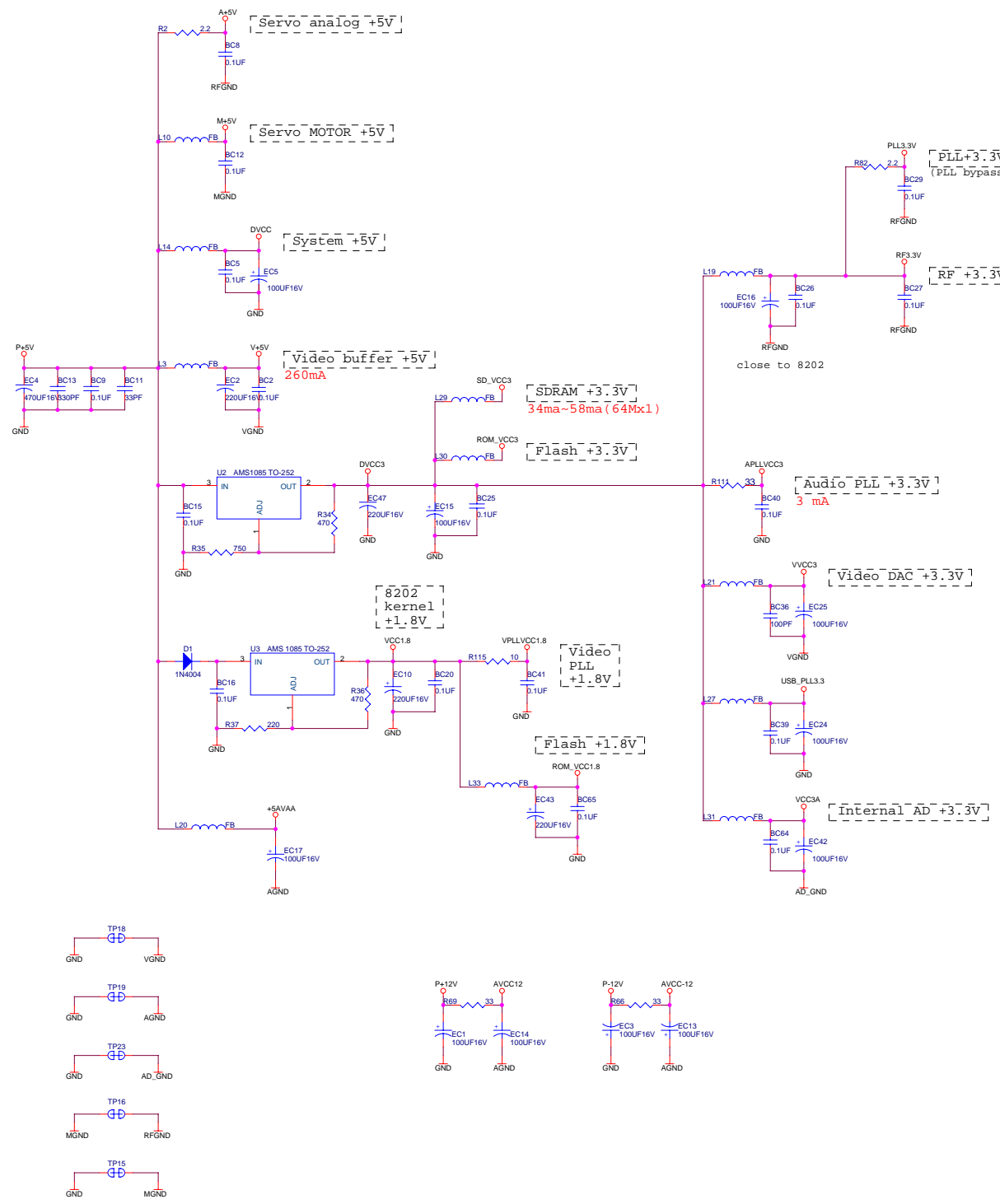
**Maintenance procedure for the karaoke part is as follows:**



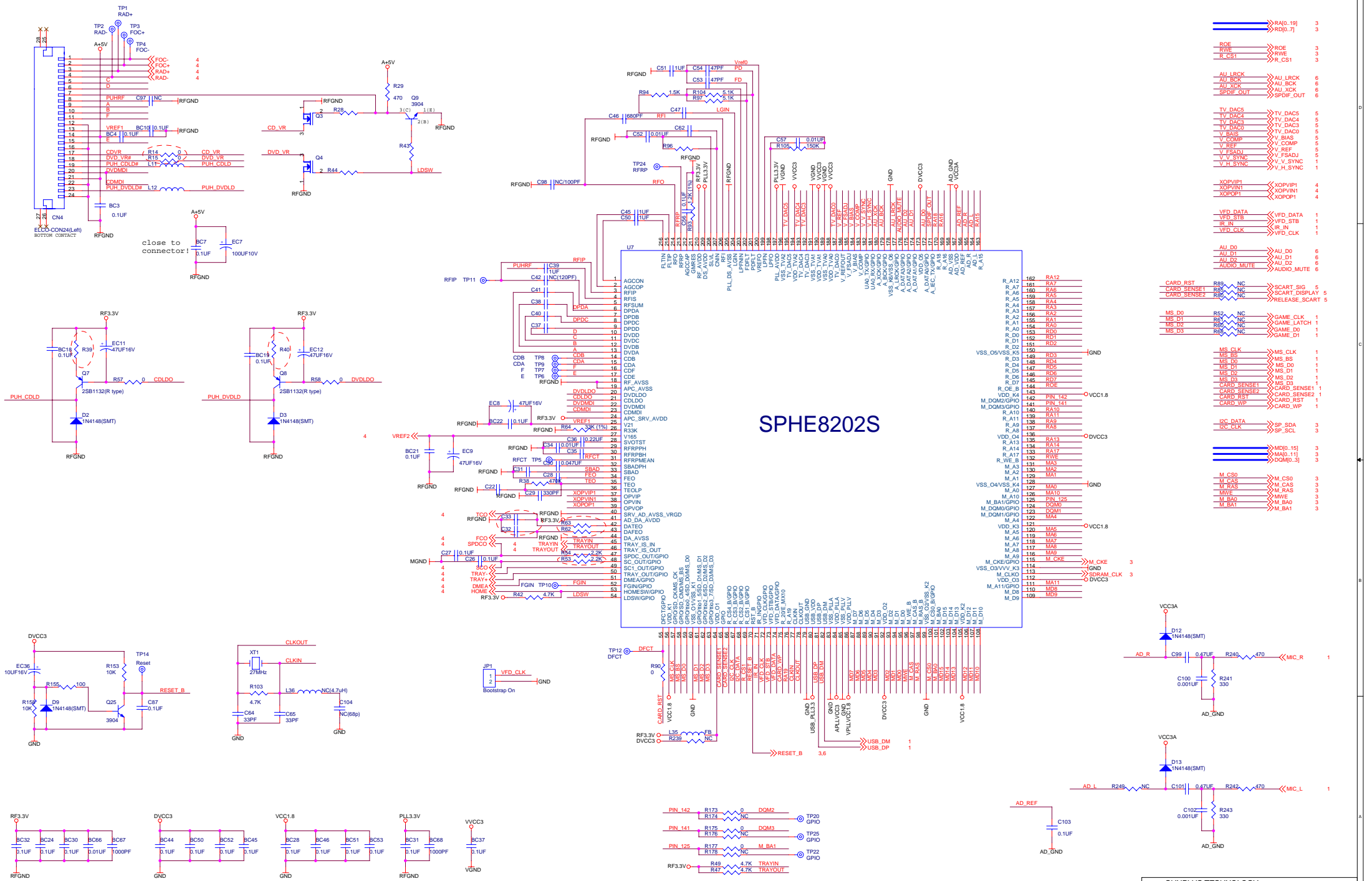


**H-MS1107-ESD**  
**2006-1-1**

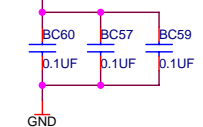
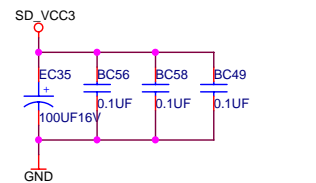
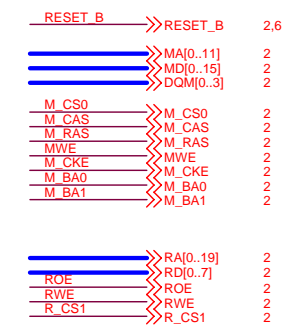
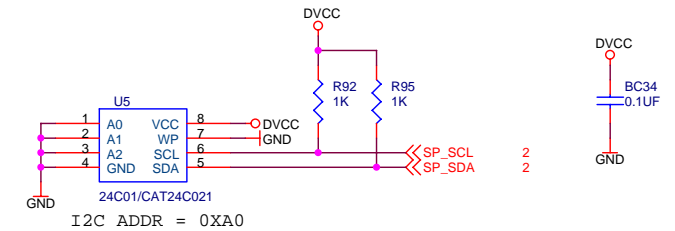
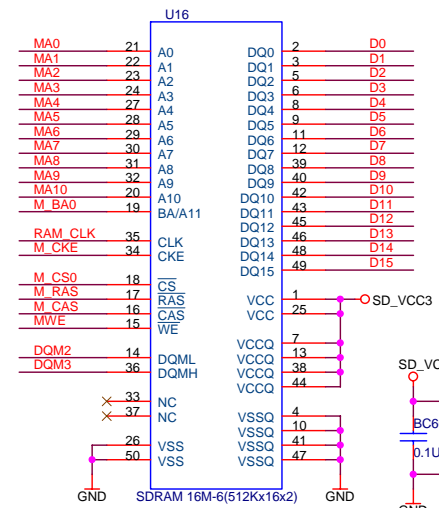
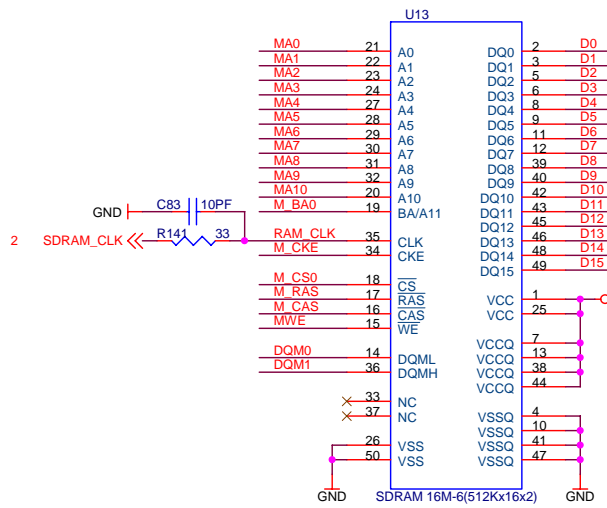
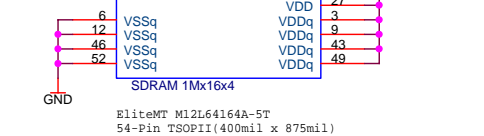
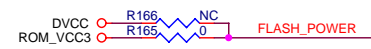
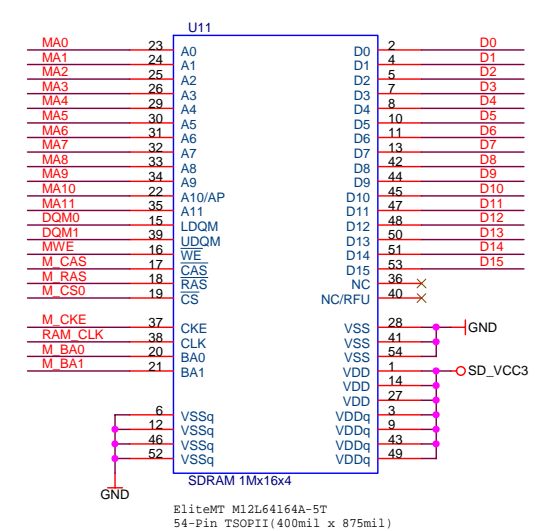
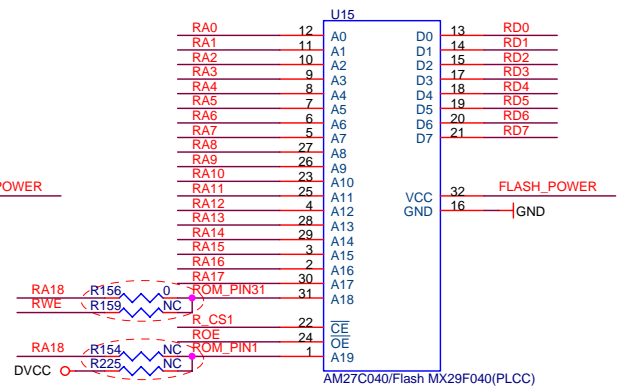
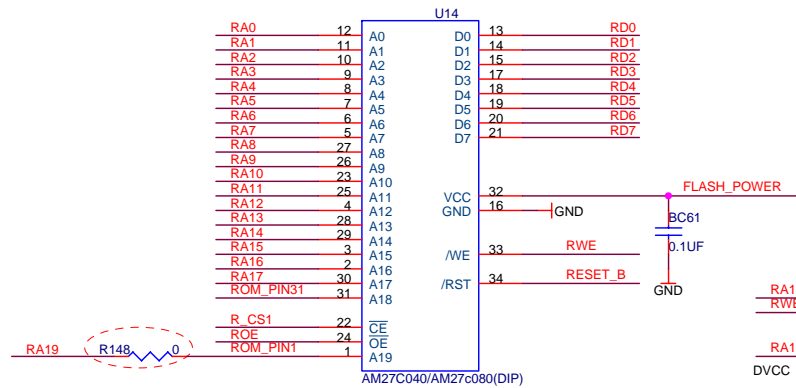




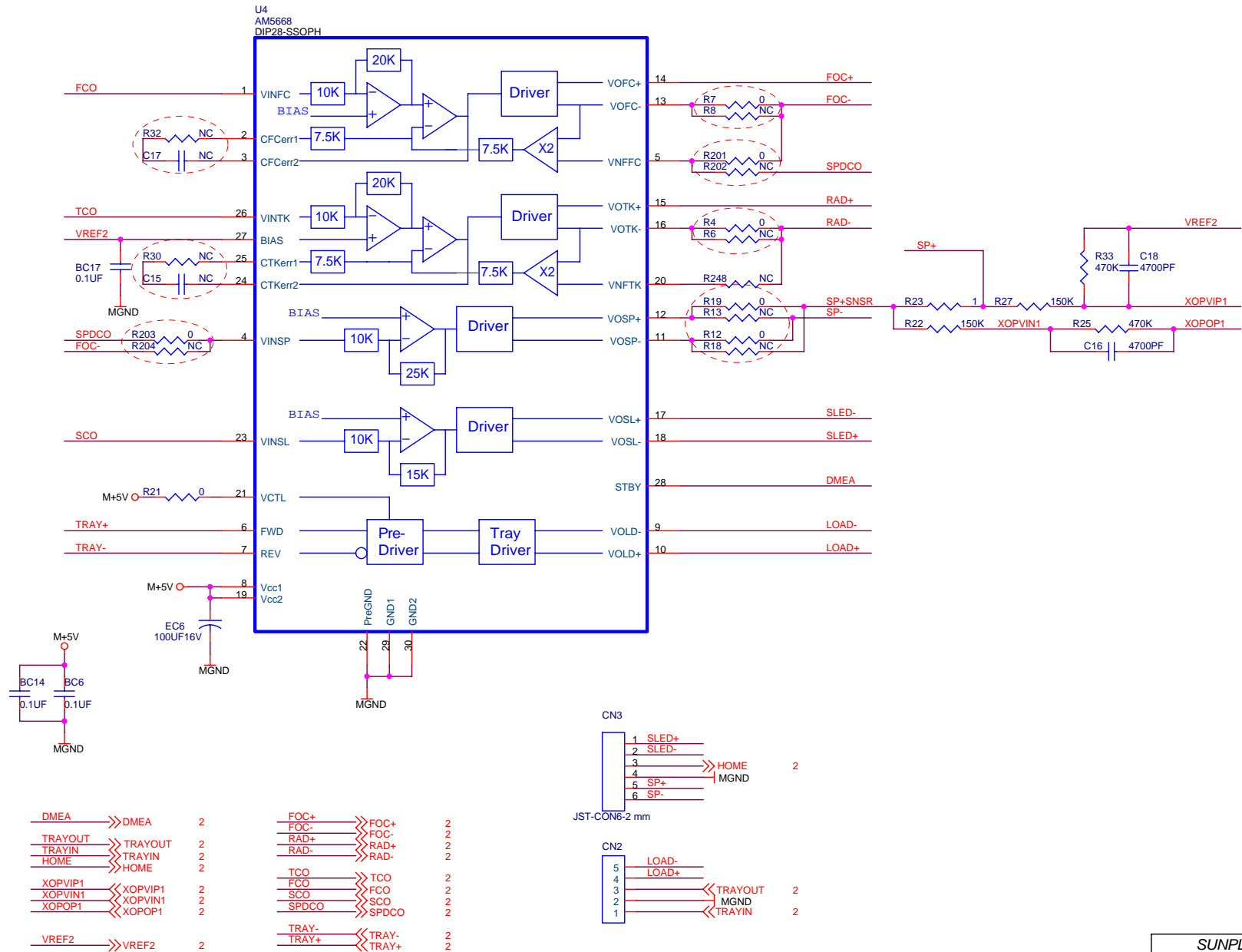
SUNPLUS TECHNOLOGY		
File	Power & Connector	
Size	Document Number	Rev
C	8202S-16-SY-216-0-D	1.02
Date	Monday, January 02, 2006	Sheet 1 of 6



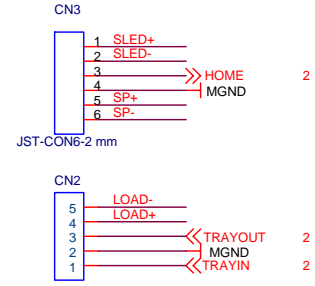
# SPHE8202S



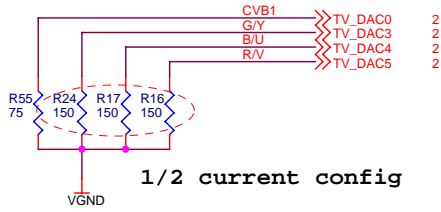
<b>SUNPLUS TECHNOLOGY</b>		
Title: ROM/FLASH/Memory		
Size: Document Number	Rev: 1.02	
8202S-16-SY-216-0-D		
Date: Monday, January 02, 2006	Sheet: 3	of 6



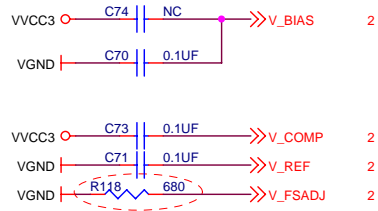
DMEA	>>> DMEA	2	FOC+	>>> FOC+	2
TRAYOUT	>>> TRAYOUT	2	FOC-	>>> FOC-	2
TRAYIN	>>> TRAYIN	2	RAD+	>>> RAD+	2
HOME	>>> HOME	2	RAD-	>>> RAD-	2
XOPVIP1	>>> XOPVIP1	2	TCO	>>> TCO	2
XOPVIN1	>>> XOPVIN1	2	FCO	>>> FCO	2
XOPVIN1	>>> XOPVIN1	2	SCO	>>> SCO	2
XOPOP1	>>> XOPOP1	2	SCO	>>> SCO	2
			SPDCO	>>> SPDCO	2
VREF2	>>> VREF2	2	TRAY-	>>> TRAY-	2
			TRAY+	>>> TRAY+	2



<b>SUNPLUS TECHNOLOGY</b>		
Title <b>Motor-Driver</b>		
Size B	Document Number <b>8202S-16-SY-216-0-D</b>	Rev 1.02
Date: Monday, January 02, 2006	Sheet 4	of 6

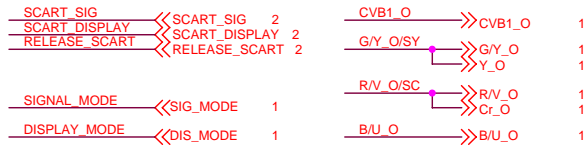
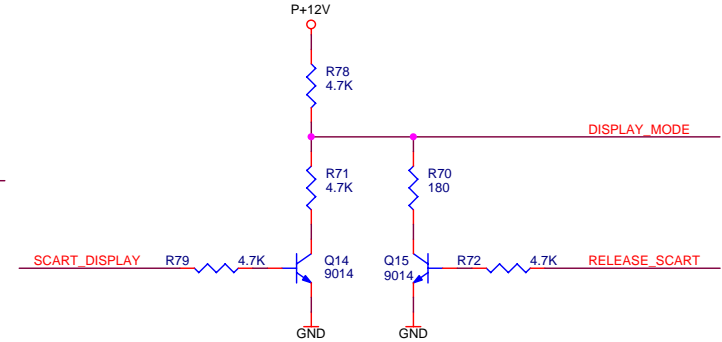
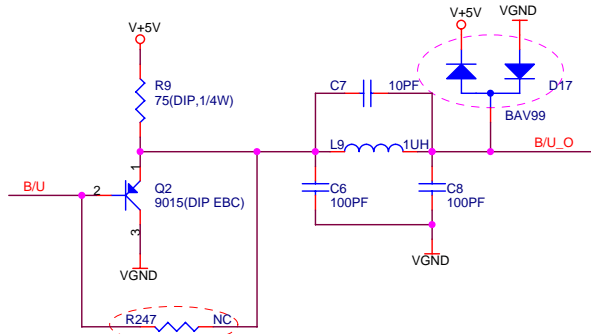
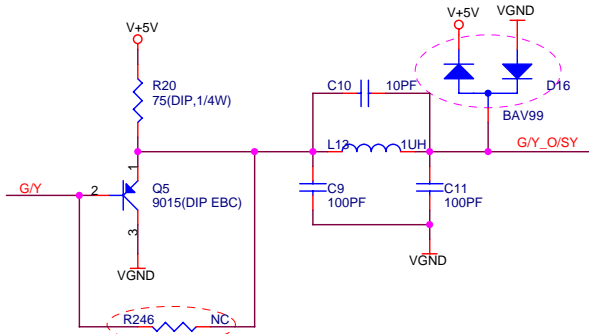
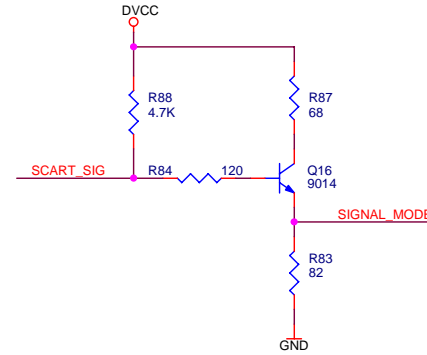
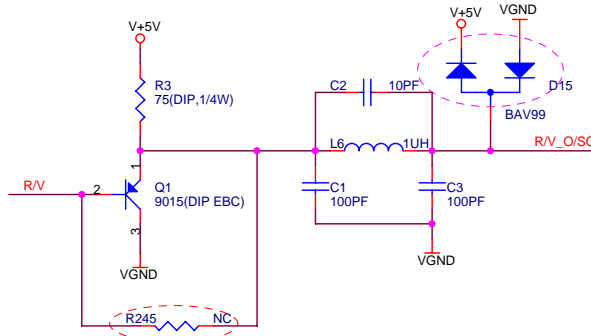
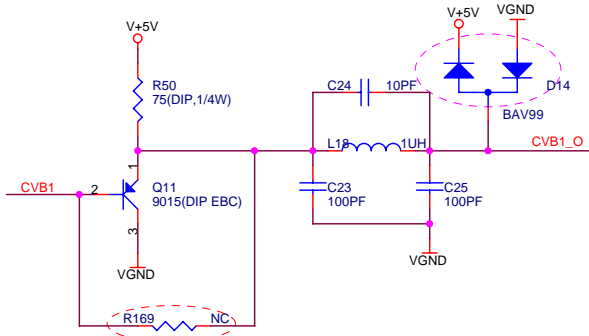


1/2 current config



1/2 current config

TV0	TV3	TV4	TV5
CVB	Y	Cb	Cr
CVB	CVB (S-Video)		C (S-Video)
CVB	G	B	R



VIDEO DAC	R118	R169	R245	R246	R247	R16	R17	R24
Full Current	390	0	0	0	0	75	75	75
Half Current	680	NC	NC	NC	NC	150	150	150

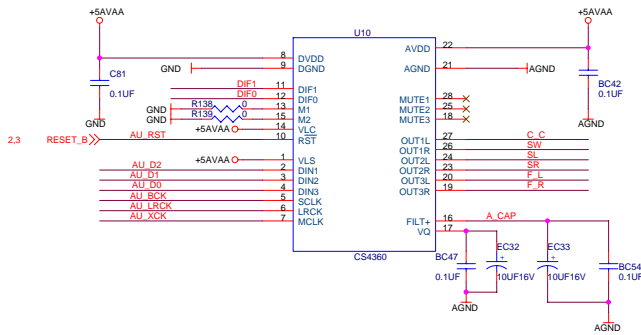
RELEASE_SCART	DISPLAY_MODE
0	Not RELEASE
1	RELEASE

SCART_SIG	SIGNAL_MODE
0	0V (CVBS)
1	3V (RGB)

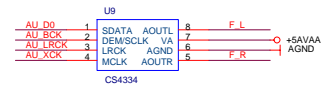
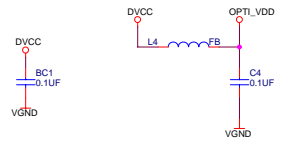
SCART_DISPLAY	DISPLAY_MODE
0	1.2V (9.5V--12V 4:3)
1	6V (5V--8V 16:9)

<b>SUNPLUS TECHNOLOGY</b>		
Title <b>Video Buffer</b>		
Size B	Document Number <b>8202S-16-SY-216-0-D</b>	Rev 1.02
Date:	Monday, January 02, 2006	Sheet 5 of 6





Replace GND with VGND For Himage mechanism



CS4334 I2S format only

**CS4360 Format**

DIF1	DIF0	AUDIO INTERFACE
0	0	LJ 24 bits
0	1	I2S
1	0	RJ 16bits
1	1	RJ 24 bits

