

10/100 BASE-T MAGNETICS MODULES

P/N: H1601SG DATA SHEET



Feature

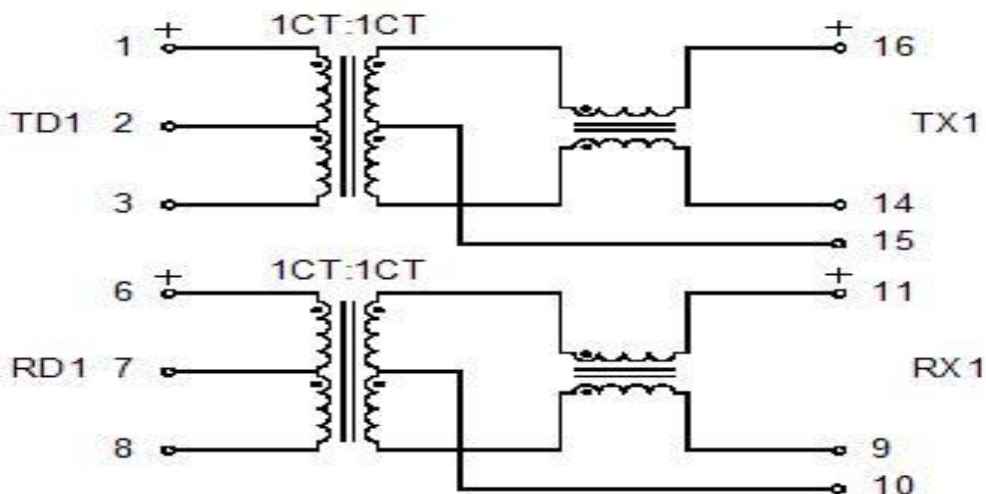
- Compatible with various 10/100 Base-TX transceiver requiring 1:1 transmit and 1:1 receive turns ratio
- Compliant with IEEE 802.3 standard including baseline wander compensation specification of 350uH OCL when Biased at 8mA from 0°C to 70°C
- Low profile Surface Mount Packaging designed for Hi-Temp Reflow Process
- Single channel interface for 10/100Mbps Ethernet applications with CMC's tuned to Enhance EMC system performance
- Operating Temperature range: 0°C to 70°C



Electrical Specifications @ 25°C				
Part Number	Turns Ratio (±5%)		OCL (uH Min) @100KHz/0.1V with 8mA	HI-POT 1mA 1Second
	TX	RX		
H1601SG	1CT:1CT	1CT:1CT	350	1500

Continue									
Part Number	Insertion Loss (dB Max)	Cross Talk (dB Min)		Return Loss (dB Min)@Load 100Ω			DCMR (dB Min)		
		0.1-100 MHz	1-60 MHz	60-100MHz	1-30MHz	30-60MHz	60-80MHz	1-30MHz	60MHz
H1601SG	-1.1	-45	-35	-18	-14	-12	-40	-35	-30

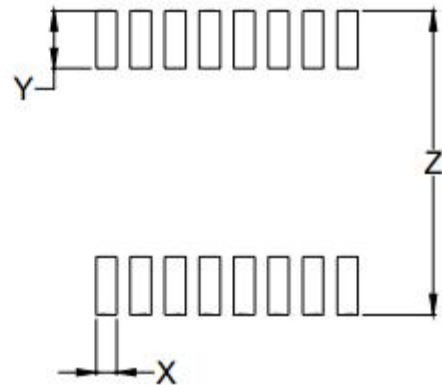
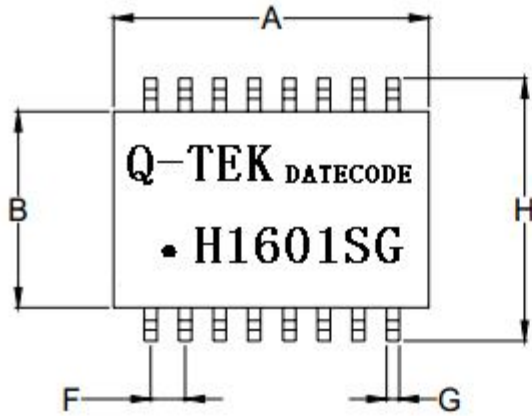
Schematic



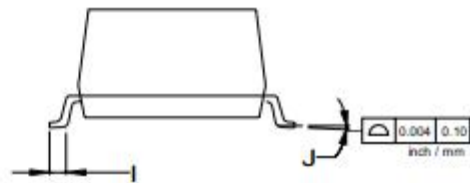
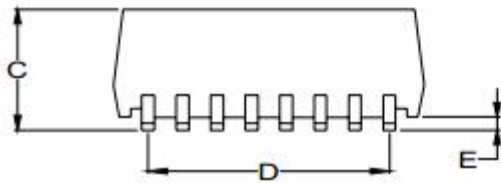
10/100 BASE-T MAGNETICS MODULES
P/N: H1601SG DATA SHEET



Mechanical



Suggested Pad layout



DIM	MILLIMETERS		INCHES			DIM	MILLIMETERS		INCHES	
	MIN	MAX	MIN	MAX			MIN	MAX	MIN	MAX
A	12.40	12.90	0.488	0.508		H	9.25	9.75	0.350	0.370
B	6.70	7.20	0.264	0.283		I	0.5	1.2	0.019	0.047
C	5.30	5.90	0.209	0.233		J	0°	8°	0°	8°
D	8.89(Typical)		0.350(Typical)			X	0.71	0.81	0.028	0.032
E	0.10	0.30	0.004	0.010		Y	1.78	2.28	0.070	0.090
F	1.27(Typical)		0.050(Typical)			Z	10.42	10.92	0.410	0.430
G	0.40	0.50	0.018	0.022						