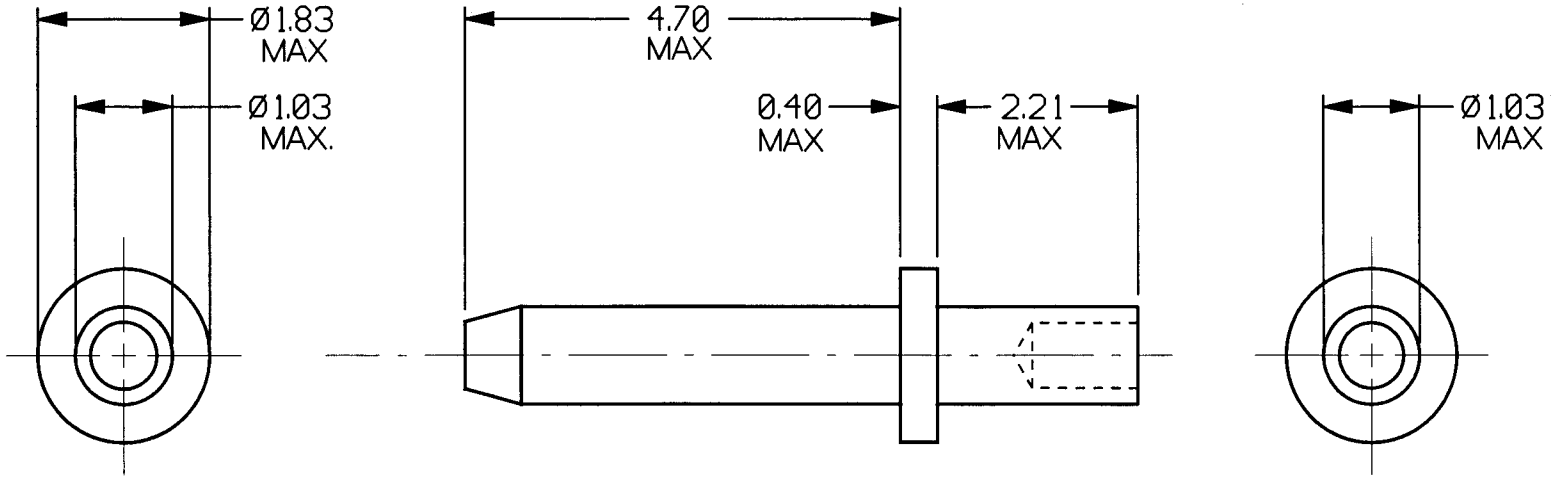


CUSTOMER INFORMATION SHEET

www.DataSheet4U.com



- NOTE:
- PLATING FINISHES AVAILABLE:  
 01 = TIN  
 05 = GOLD
  - RECOMMENDED MOUNTING HOLE:  $\phi 1.04/\phi 1.14$
  - RECOMMENDED PANEL THICKNESS: 1.6mm
  - FOR SWAGING TOOL CHANGE PART No. TO PREFIX 'Z' AND SUFFIX '00' (EXAMPLE Z2175-00)

1	6.1.95	
ISS.	DATE	C/N
DRAWN: I.SANDY		
CHECKED: <i>[Signature]</i>		
APPD.: <i>[Signature]</i>		
CUSTOMER REF.		
ASSEMBLY DRG:		

**HARWIN**

HARWIN PLC  
 U.K.  
 TEL: (01705) 370451  
 FAX: (01705) 324010

HARWIN INC  
 U.S.A.  
 TEL: (812) 285-0055  
 FAX: (812) 285-0056

HARWIN PTE  
 SINGAPORE  
 TEL: 7794909  
 FAX: 7793868

TOLERANCES  
 X. ±1mm  
 X.X ±0.25mm  
 X.XX ±0.10mm  
 X.XXX ±0.01mm  
 ANGLES ±1°

MATERIAL: BRASS  
 FINISH: SEE NOTE 1  
 S/AREA: mm<sup>2</sup>

TITLE: TERMINAL PIN  
 DRAWING NUMBER: H2175-XX  
 SHT. 2 OF 2