

# Customer Information Sheet

DRAWING No.: H3108-01

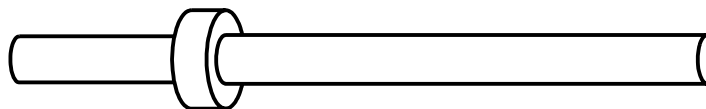
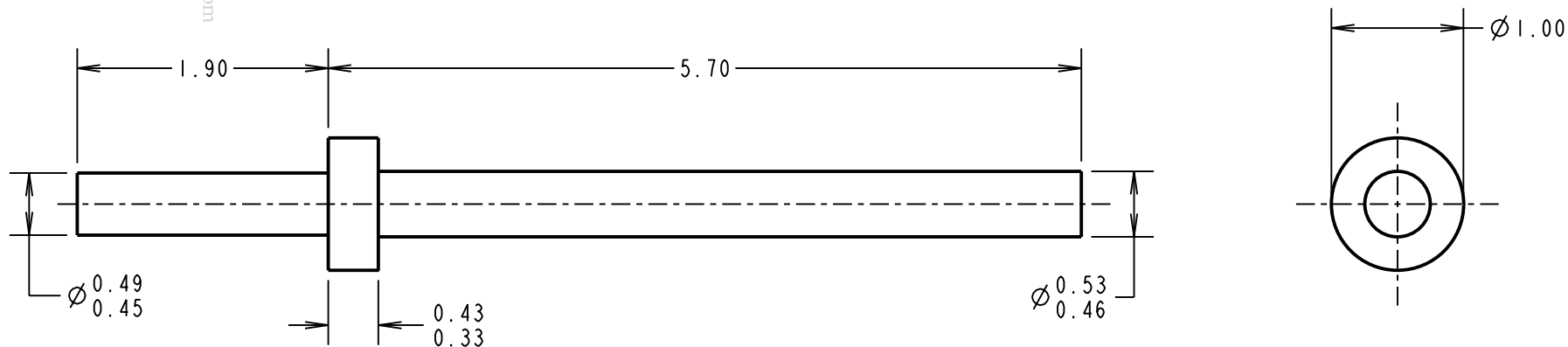
IF IN DOUBT - ASK

©

NOT TO SCALE

THIRD ANGLE PROJECTION

ALL DIMENSIONS IN mm



**NOTES:**

1. UNLESS OTHERWISE STATED, TOLERANCES =  $\pm 0.13$
2. RECOMMENDED HOLE SIZE =  $\varnothing 0.50/0.55\text{mm}$
3. FOR USE WITH BOARD THICKNESS 1.00mm
4. USE PUNCH AND DIE TOOL PART NUMBER Z3108-00

CP	6	01.09.09	10457
NAME	ISS.	DATE	C/NOTE
APPROVED: C. PENROSE			
CHECKED: R. ADDE			
DRAWN: PDC			
CUSTOMER REF.:			
ASSEMBLY DRG:			

www.DataSheet4U.com

www.DataSheet4U.com

**HARWIN**

THIS DRAWING AND ANY INFORMATION OR DESCRIPTIVE MATTER SET OUT HEREON ARE CONFIDENTIAL AND COPYRIGHT PROPERTY OF THE HARWIN GROUP AND MUST NOT BE DISCLOSED, LOANED, COPIED OR USED FOR MANUFACTURING, TENDERING OR FOR ANY OTHER PURPOSE WITHOUT THEIR WRITTEN PERMISSION.

**TOLERANCES**  
~~X =  $\pm 1\text{mm}$~~   
~~X.X =  $\pm 0.25\text{mm}$~~   
~~X.XX =  $\pm 0.10\text{mm}$~~   
~~X.XXX =  $\pm 0.01\text{mm}$~~   
 ANGLES =  $\pm 5^\circ$   
 UNLESS STATED

**MATERIAL:**  
 ANNEALED BRASS  
 CW614N M TO BS EN 12164  
**FINISH:** 100% TIN OVER NICKEL  
**S/AREA:** mm<sup>2</sup>

**TITLE:**  
 TERMINAL  
**DRAWING NUMBER:**  
 H3108-01  
 SHT 2 OF 2

<p>HARWIN USA                  TEL: 603 893 5376                  FAX: 603 893 5396                  mis@harwin.com</p>	<p>HARWIN Europe (UK)                  TEL: 023 9231 4545                  FAX: 023 9231 4590                  mis@harwin.co.uk</p>	<p>HARWIN Asia                  TEL: +65 6 779 4909                  FAX: +65 6 779 3868                  mis@harwin.com.sg</p>
---	---	---