



# H 7805

## Description

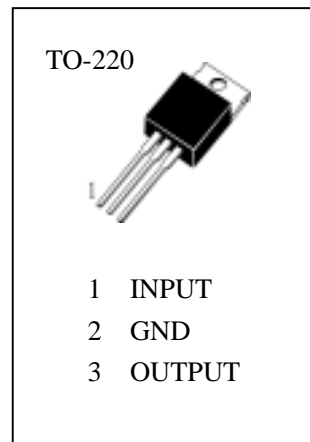
The H7805 series of three terminal positive Regulators are available in the TO-220 package and with several fixed output voltages, making them useful in a wide range of applications. Each type employs internal current limiting, Thermal shut down and safe operating area protection, making it essentially indestructible. If adequate heat sinking is provided, they can deliver over 1A output current. Although designed primarily as fixed voltage regulator, these devices can be used with external components to obtain adjustable voltages and currents.

## Features

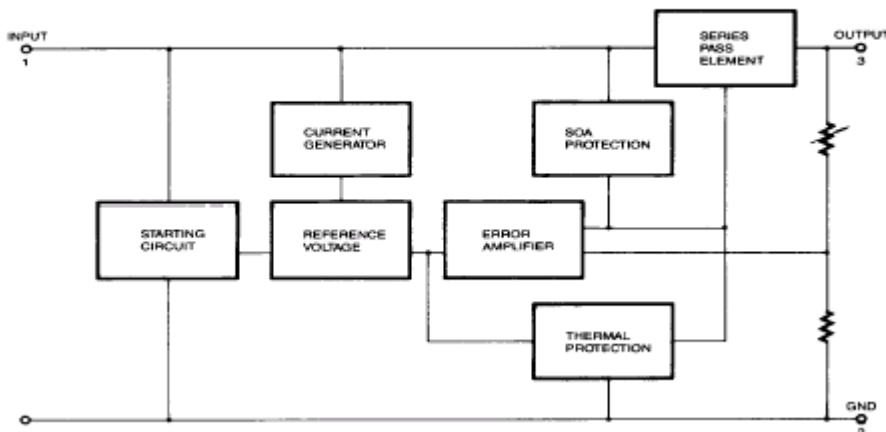
- Output current up to 1A
- Output Voltages of 5V
- Thermal Overload Protection
- Short Circuit Protection
- Output Transistor Safe Operating Area Protection

## Absolute Maximum Ratings ( $T_a=25^\circ\text{C}$ )

$V_I$	—Input Voltage (for $V_O=5V$ to $18V$ ).....	35V
$R_{JC}$	—Thermal Resistance Junction-Cases.....	5 $^\circ\text{C}/\text{W}$
$R_{JA}$	—Thermal Resistance Junction-Air.....	65 $^\circ\text{C}/\text{W}$
$T_{OPR}$	—Operating Temperature Range.....	0~125
$T_{STG}$	—Storage Temperature Range.....	-65~150



## Internal Block Diagram



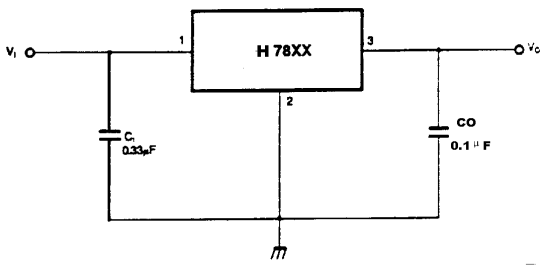


( Refer to test circuit, unless otherwise specified,  $T_J = 25^\circ\text{C}$ ,  $I_o = 500\text{mA}$ ,  $V_i = 10\text{V}$ ,  $C_i = 0.33\ \mu\text{F}$ ,  $C_o = 0.1\ \mu\text{F}$ , )

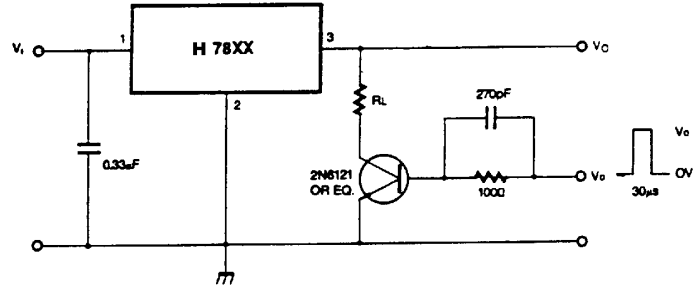
Symbol	Parameter	Min.	Typ.	Max.	Unit	Conditions
$V_o$	Output Voltage	4.8	5.0	5.2	V	$T_J = 25$
		4.75	5.0	5.25		$5.0\text{mA} \leq I_o \leq 1.0\text{A}$ , $P_o \leq 15\text{W}$ , $7\text{V} \leq V_i \leq 20\text{V}$
$V_o$	Line Regulation (Note1)		4.0	100	mV	$T_J = 25$ , $7\text{V} \leq V_i \leq 25\text{V}$
			1.6	50		$T_J = 25$ , $8\text{V} \leq V_i \leq 12\text{V}$
$V_o$	Load Regulation (Note1)		9	100	mV	$T_J = 25$ , $5.0\text{mA} \leq I_o \leq 1.5\text{A}$
			4	50		$T_J = 25$ , $250\text{mA} \leq I_o \leq 750\text{mA}$
$I_o$	Quiescent Current		5.0	8	mA	$T_J = 25$
$I_o$	Quiescent Current Change		0.03	0.5	mA	$5\text{mA} \leq I_o \leq 1.0\text{A}$
			0.3	1.3		$7\text{V} \leq V_i \leq 25\text{V}$
$V_o / T$	Output Voltage Drift		-0.8		mV/	$I_o = 5\text{mA}$
$V_N$	Output Noise Voltage		42		$\mu\text{V}$	$T_A = 25$ , $10\text{Hz} \leq f \leq 100\text{kHz}$
RR	Ripple Rejection	62	73		dB	$f = 120\text{Hz}$ , $8\text{V} \leq V_i \leq 18\text{V}$
$V_D$	Dropout Voltage		2		V	$I_o = 1\text{A}$ , $T_J = 25$
$R_o$	Output Resistance		15		m	$f = 1\text{kHz}$
$I_{SC}$	Short Circuit Current		230		mA	$V_i = 35\text{V}$ , $T_A = 25$
$I_{PK}$	Peak Current		2.2		A	$T_J = 25$



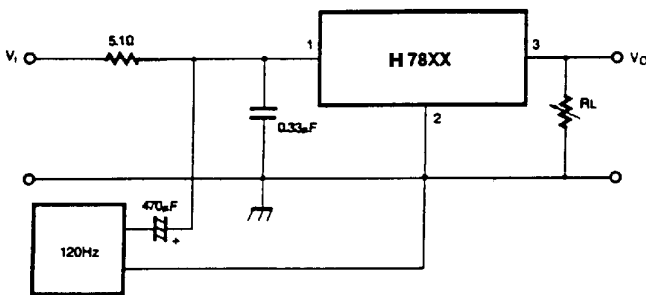
## Typical Applications



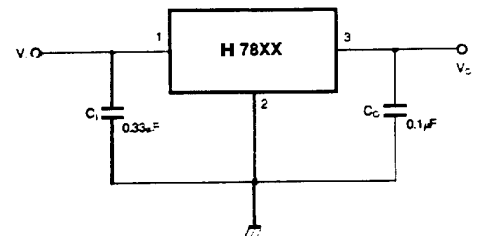
1、 DC Parameters



2、 Load Regulation



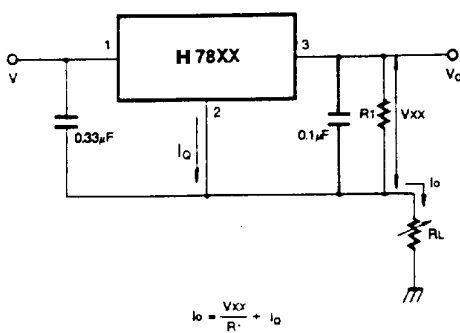
3、 Ripple Rejection



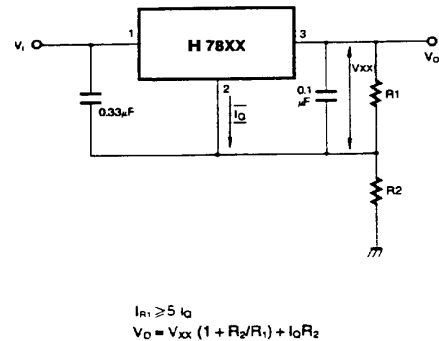
4、 Fixed Output Regulator

### Notes:

- (1) To specify an output voltage, substitute voltage value for "XX." A common ground is required between the input and the Output voltage. The input voltage must remain typically 2.0V above the output voltage even during the low point on the input ripple voltage.
- (2) C<sub>1</sub> is required if regulator is located an appreciable distance from power Supply filter.
- (3) C<sub>0</sub> improves stability and transient response.



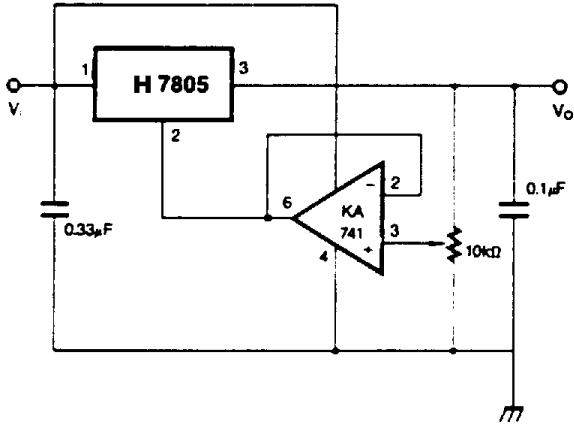
5、 Constant Current Regulator



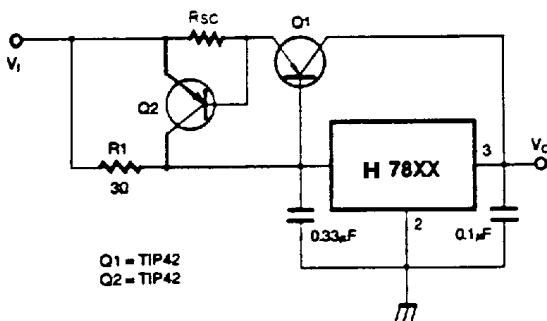
6、 Circuit for Increasing Output Voltage



# H 7805



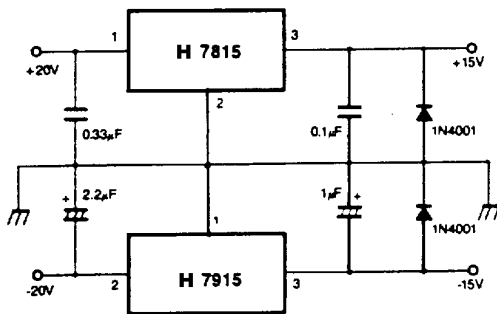
7、Adjustable Output Regulator (7 to 30V)



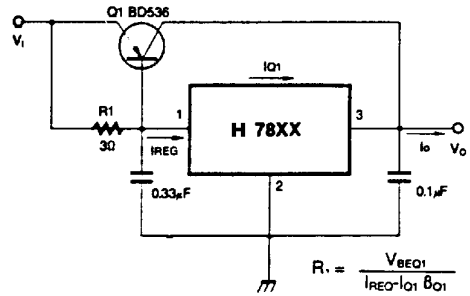
Q1 = TIP42  
Q2 = TIP42

$$R_{sc} = \frac{V_{BEQ2}}{I_{sc}}$$

9、High Output Current with Short Circuit Protection



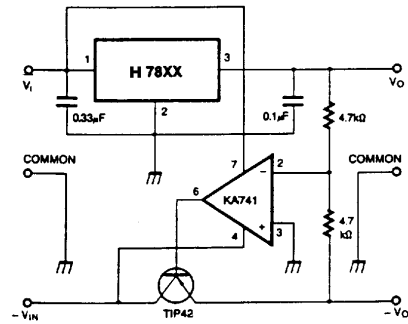
11、Split Power Supply (±15V-1A)



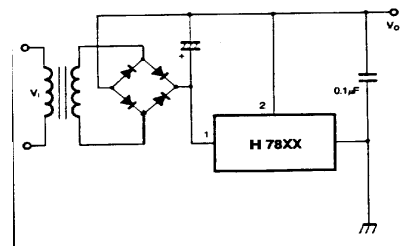
$$I_o = I_{REG} + \beta_{O1} (I_{REG} - V_{BEQ1}/R_1)$$

$$R_1 = \frac{V_{BEQ1}}{I_{REG} - I_{O1} \beta_{O1}}$$

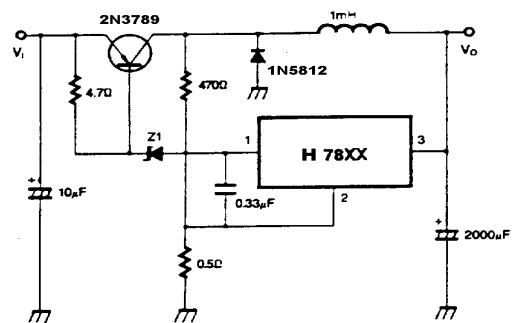
8、High Current Voltage Regulator



10、Tracking Voltage Regulator



12、Negative Output Voltage Circuit



13、Switching Regulator



## Typical Performance Characteristics

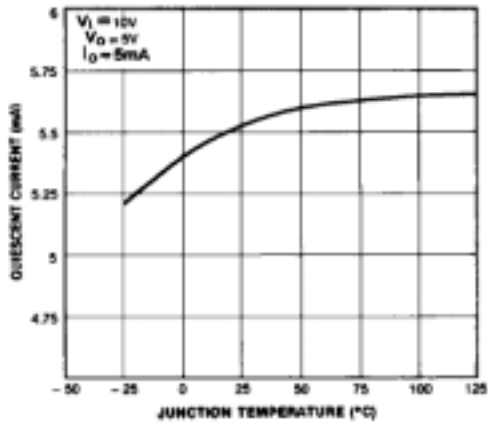


Figure 1. Quiescent Current

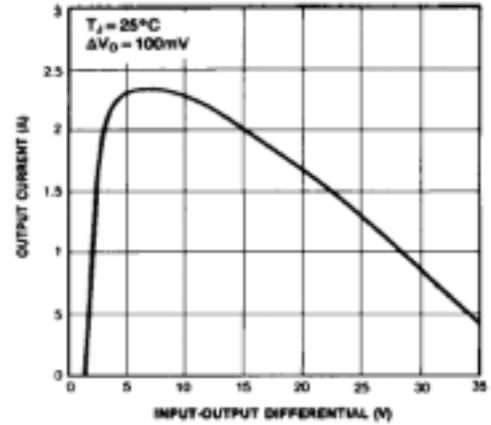


Figure 2. Peak Output Current

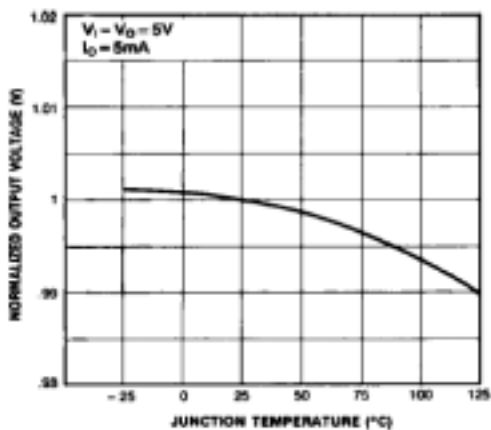


Figure 3. Output Voltage

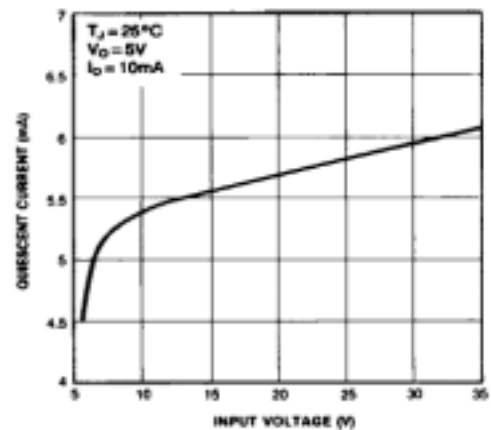


Figure 4. Quiescent Current