

HCD-D890AV/XB55AV/ XB80AV/XB88AV

SERVICE MANUAL

Canadian Model
HCD-D890AV

AEP Model

UK Model

HCD-XB80AV

E Model

HCD-XB88AV

Australian Model

HCD-XB55AV/XB88AV



Photo: HCD-XB88AV

HCD-D890AV/XB55AV/XB80AV/XB88AV is the tuner, deck, CD and amplifier section in LBT-D890AV/XB55AV/XB80AV/XB88AV.

This stereo system is equipped with the Dolby Pro Logic Surround system* and the Dolby B-type noise reduction system.

* Manufactured under license from Dolby Laboratories Licensing Corporation.

DOLBY, the double-D symbol $\square\square$ and "PRO LOGIC" are trademarks of Dolby Laboratories Licensing Corporation.

CD SECTION	Model Name Using Similar Mechanism	HCD-D670AV/N555AV
	CD Mechanism Type	CDM37L-5BD29AL CDM37LH-5BD29AL
	Base Unit Type	BU-5BD29AL
	Optical Pick-up Type	KSS-213D/Q-NP
TAPE DECK SECTION	Model Name Using Similar Mechanism	HCD-D670AV/N555AV
	Tape Transport Mechanism Type	TCM-220WR2

SPECIFICATIONS

Amplifier section

(HCD-D890AV)

Continuous RMS power output

FRONT SPEAKER: 120 + 120 watts
(8 ohms at 1 kHz, 10% THD)

CENTER SPEAKER: 40 watts
(8 ohms at 1 kHz, 10% THD)

REAR SPEAKER: 20 + 20 watts
(16 ohms at 1 kHz, 10% THD)

Total harmonic distortion
Less than 0.07%
(8 ohms at 1 kHz, 50 watts FRONT SPEAKER)

(HCD-XB80AV)

DIN power output (Rated)

FRONT SPEAKER: 100 + 100 watts
(8 ohms at 1 kHz, DIN)

CENTER SPEAKER: 35 watts
(8 ohms at 1 kHz, DIN)

REAR SPEAKER: 17.5 + 17.5 watts
(16 ohms at 1 kHz, DIN)

Continuous RMS power output (Reference)

FRONT SPEAKER: 120 + 120 watts
(8 ohms at 1 kHz, 10% THD)

CENTER SPEAKER: 42 watts
(8 ohms at 1 kHz, 10% THD)

REAR SPEAKER: 21 + 21 watts
(16 ohms at 1 kHz, 10% THD)

Music power output (Reference)

FRONT SPEAKER: 210 + 210 watts
(8 ohms at 1 kHz, 10% THD)

CENTER SPEAKER: 70 watts
(8 ohms at 1 kHz, 10% THD)

REAR SPEAKER: 35 + 35 watts
(16 ohms at 1 kHz, 10% THD)

(HCD-XB55AV/XB88AV)
The following measured at AC 120/240 V, 50 Hz
DIN power output (Rated)

FRONT SPEAKER: 105 + 105 watts
(6 ohms at 1 kHz, DIN)

CENTER SPEAKER: 20 watts
(8 ohms at 1 kHz, DIN)

REAR SPEAKER: 10 + 10 watts
(16 ohms at 1 kHz, DIN)

Continuous RMS power output (Reference)

FRONT SPEAKER: 130 + 130 watts
(6 ohms at 1 kHz, 10% THD)

CENTER SPEAKER: 25 watts
(8 ohms at 1 kHz, 10% THD)

REAR SPEAKER: 12.5 + 12.5 watts
(16 ohms at 1 kHz, 10% THD)

Peak music power output (Reference)
2,000 watts

Inputs
PHONO IN (phono jacks): sensitivity 3 mV,
impedance 47 kilohms

(HCD-D890AV)

VIDEO (AUDIO) IN (phono jacks):
sensitivity 250 mV,
impedance 47 kilohms

(HCD-XB55AV/XB80AV/XB88AV)

VIDEO/MD (AUDIO) IN (phono jacks):
sensitivity 250 mV,
impedance 47 kilohms

MIX MIC (phone jack):
sensitivity 1 mV,
impedance 10 kilohms

Outputs
PHONES (stereo phone jack):
accepts headphones of 8
ohms or more

(HCD-XB55AV/XB80AV/XB88AV)

VIDEO/MD (AUDIO) OUT (phono jacks):
voltage 250 mV,
impedance 1 kilohm

FRONT SPEAKER:
(HCD-D890AV/XB80AV) accepts impedance of 8 to
16 ohms

(HCD-XB55AV/XB88AV) accepts impedance of 6 to
16 ohms

SURROUND SPEAKER CENTER:
accepts impedance of 8 to
16 ohms

SURROUND SPEAKER REAR
accepts impedance of 16
ohms

— Continued on next page —

COMPACT DISC DECK RECEIVER

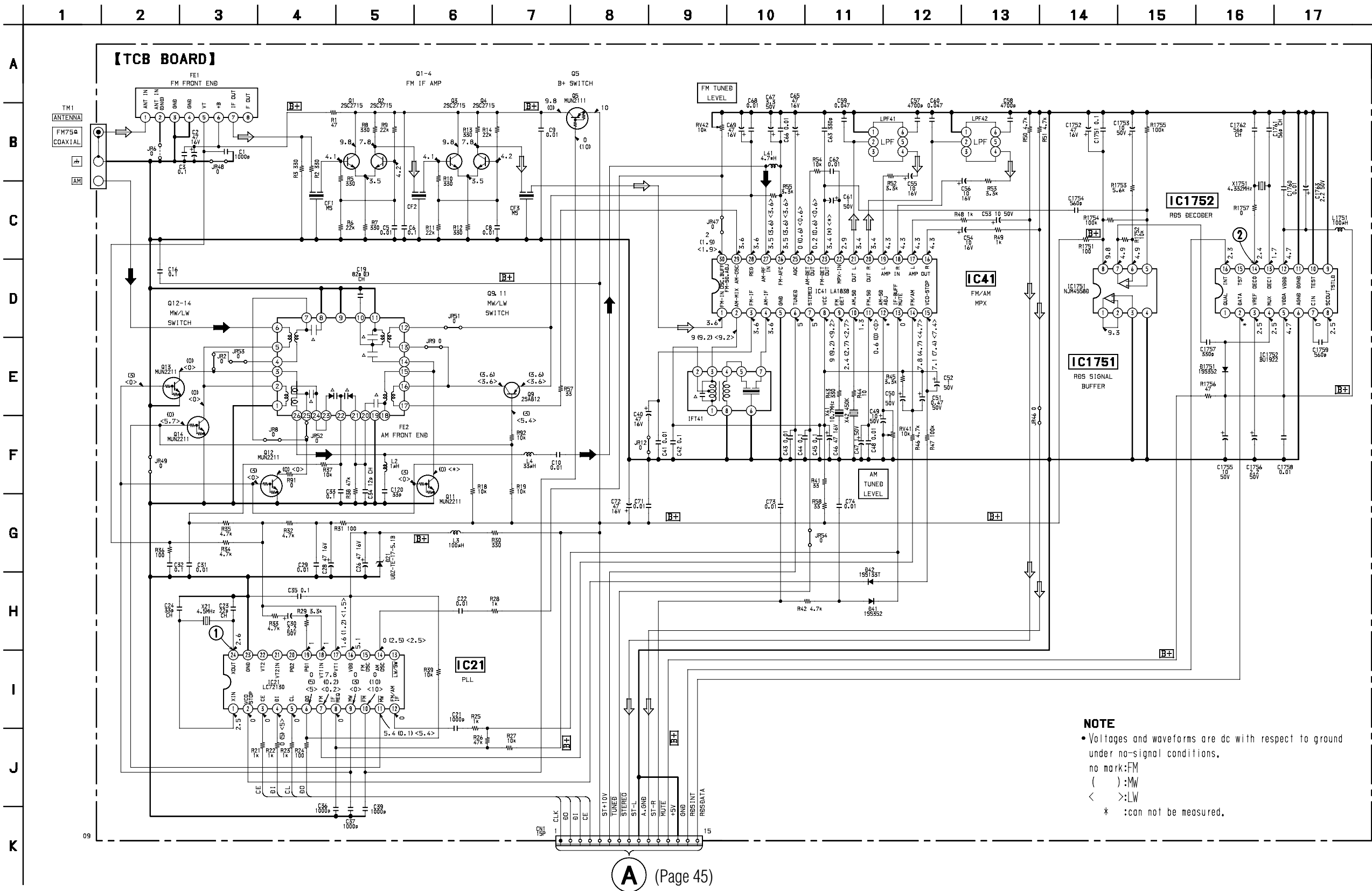


MICROFILM

SONY®

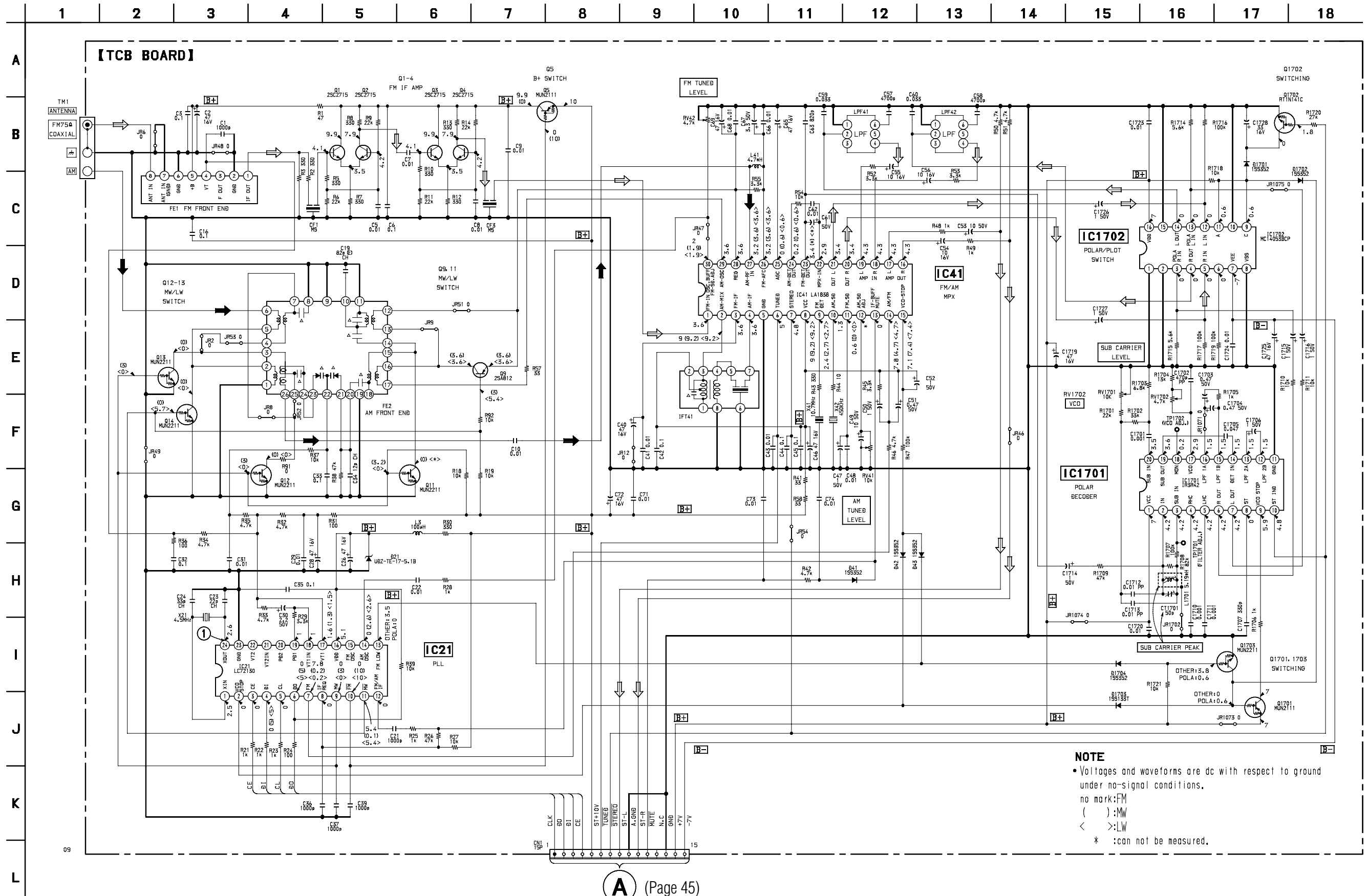
6-5. SCHEMATIC DIAGRAM – TUNER SECTION – (AEP, UK model)

- See page 32 for Waveforms.
- See page 85 for IC Block Diagrams.



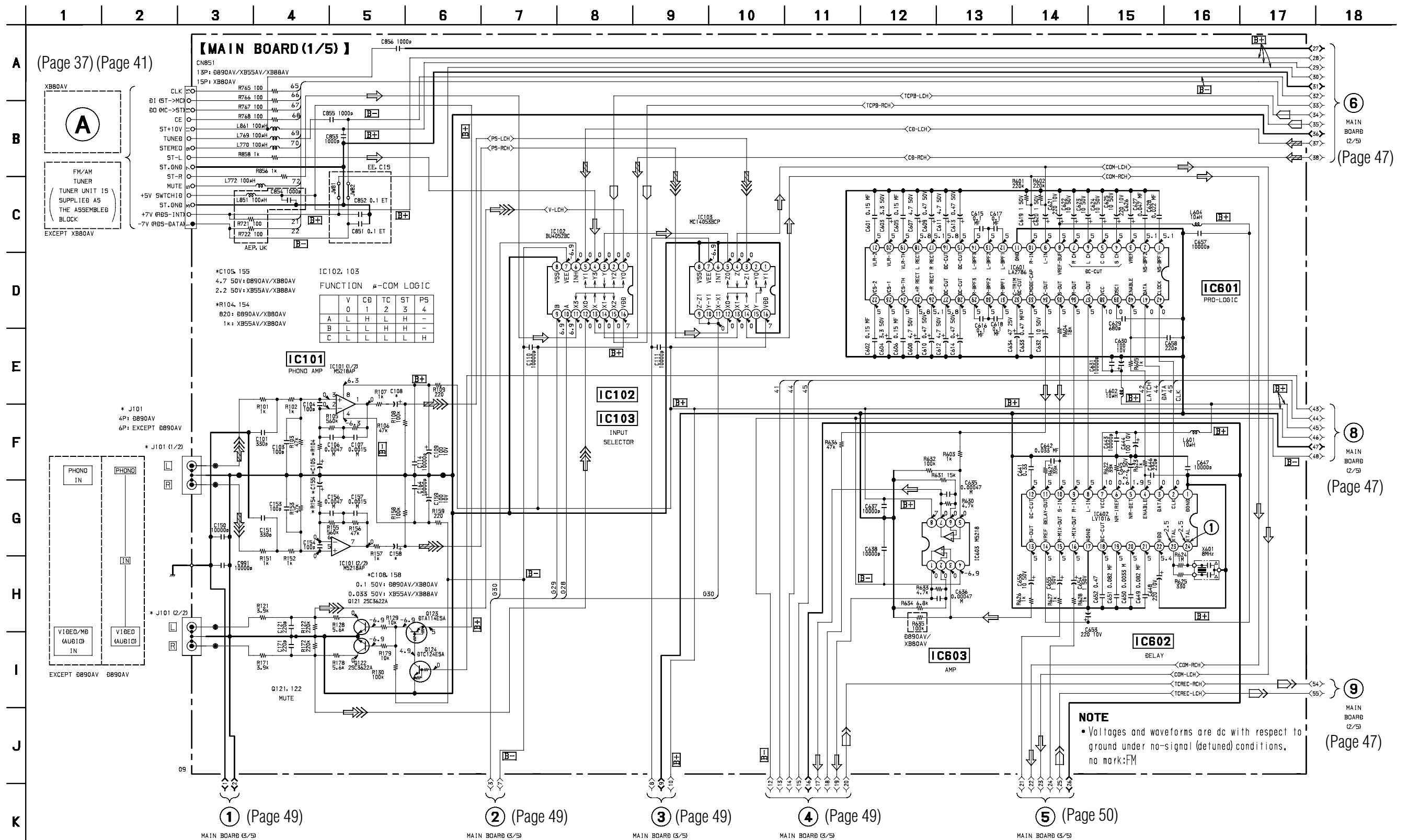
6-8. SCHEMATIC DIAGRAM – TUNER SECTION – (East European, CIS model)

- See page 32 for Waveforms.
- See page 85 for IC Block Diagrams.



6-10. SCHEMATIC DIAGRAM – MAIN (1/5) SECTION –

- See page 32 for Waveforms.
- See page 89 for IC Block Diagrams.



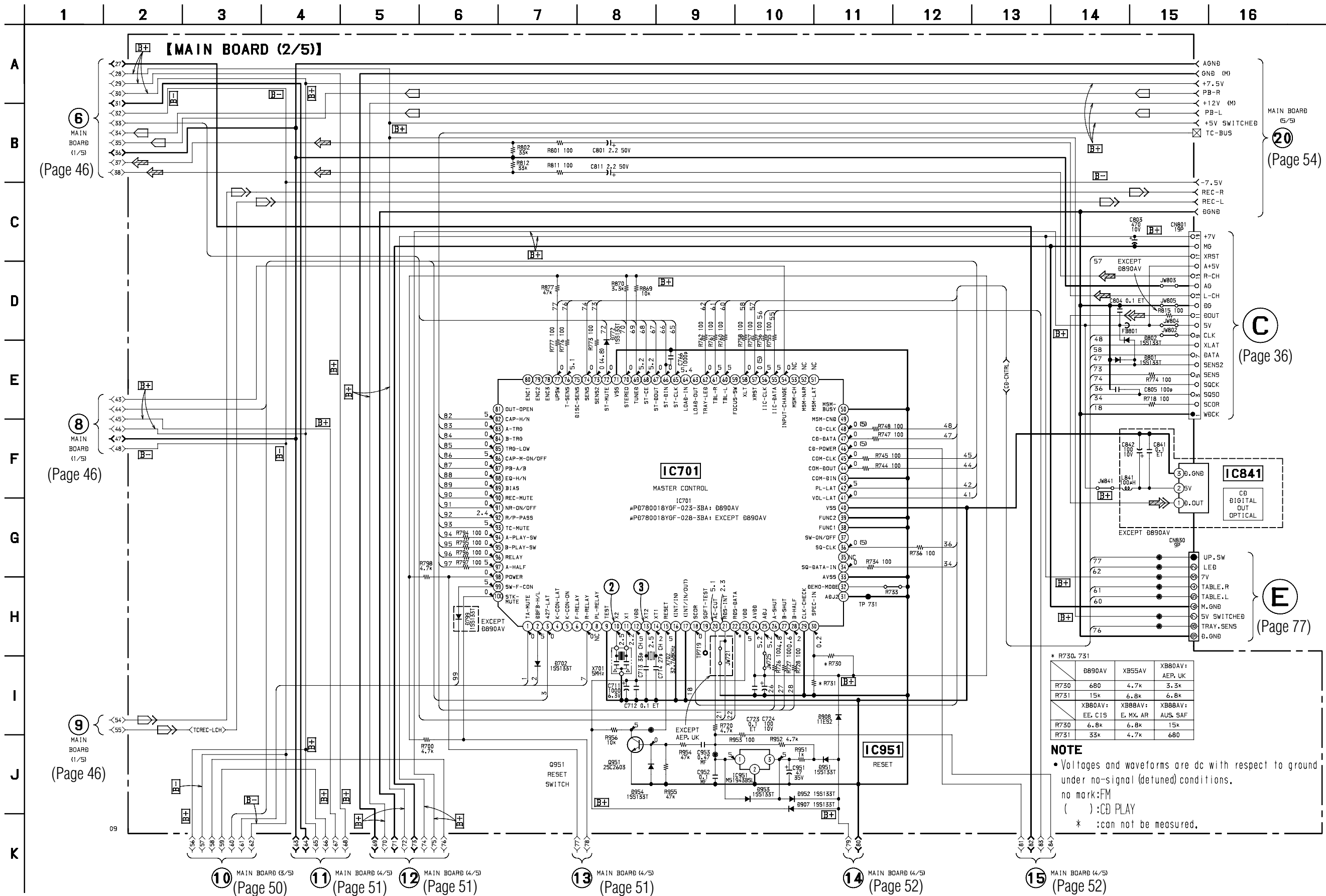
⑥ MAIN BOARD (2/5) (Page 47)

⑧ MAIN BOARD (2/5) (Page 47)

⑨ MAIN BOARD (2/5) (Page 47)

6-11. SCHEMATIC DIAGRAM – MAIN (2/5) SECTION –

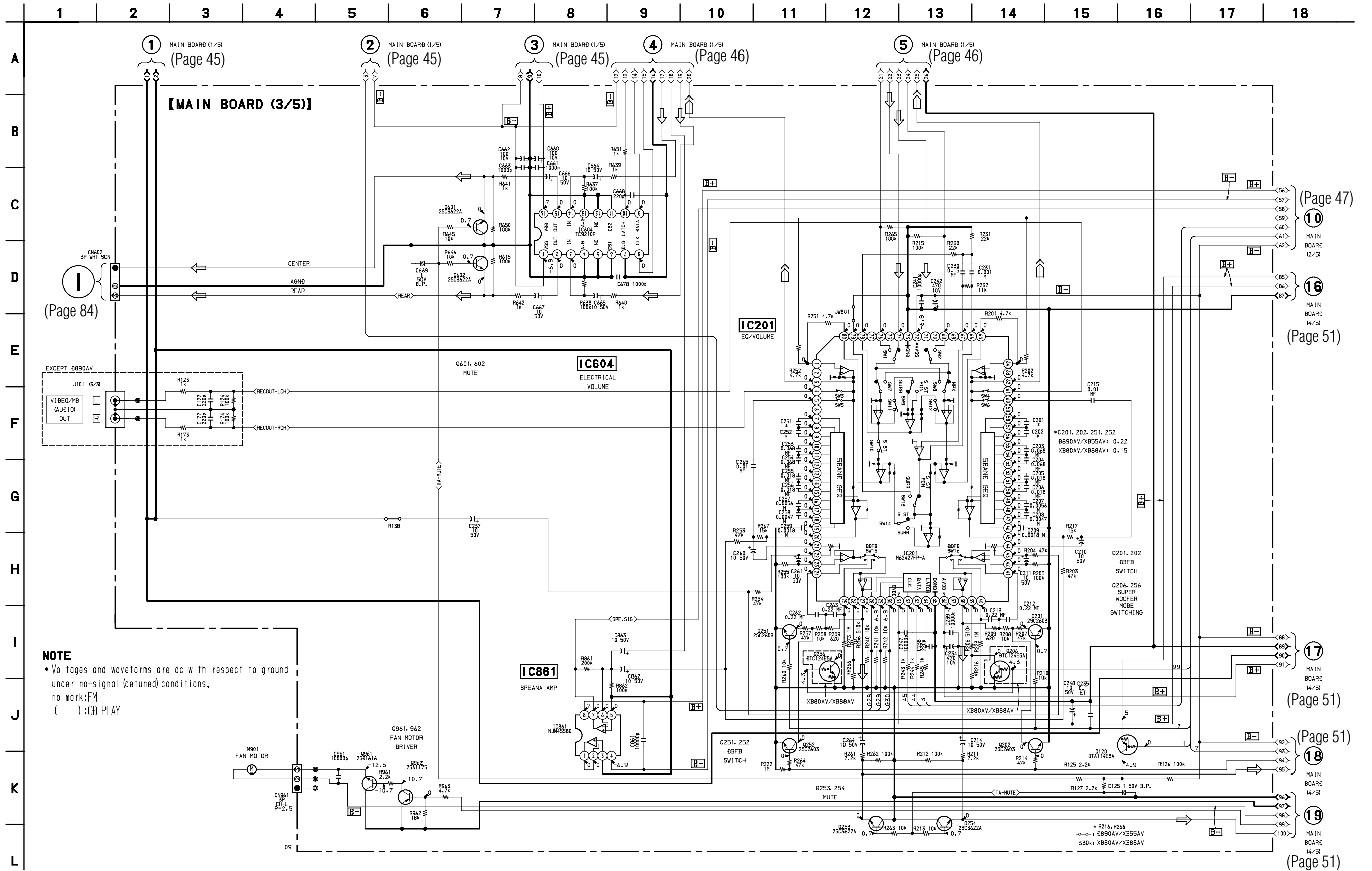
- See page 32 for Waveforms.
- See page 43 for Printed Wiring Board.
- See page 98 for IC Pin Functions.



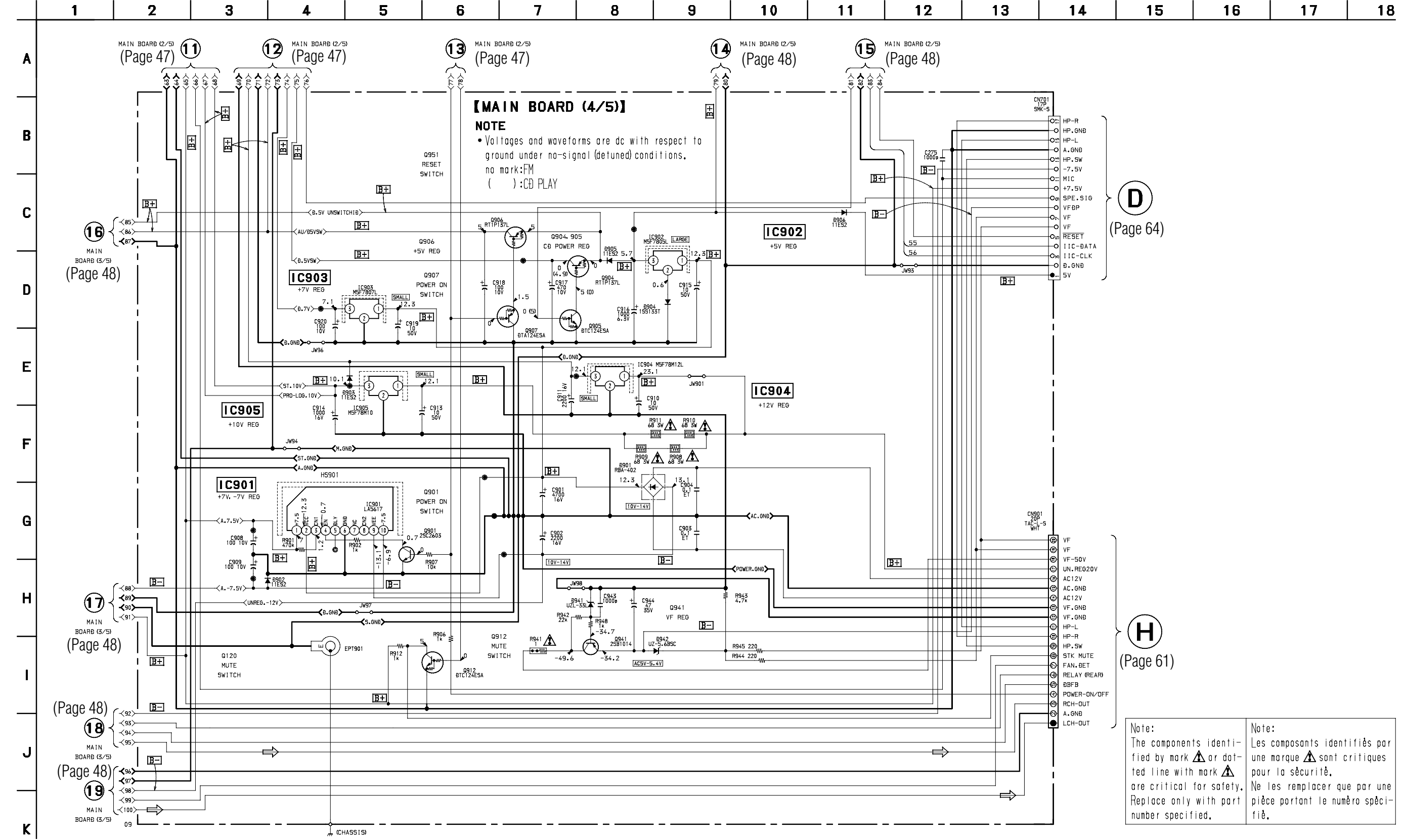
* R730, 731	D890AV	XB55AV	XB80AV:
R730	680	4.7k	AEP, UK
R731	15k	6.8k	6.8k
XB80AV:	XB88AV:	XB88AV:	
EE, C15	E, MX, AR	AUS, SAF	
R730	6.8k	6.8k	15k
R731	33k	4.7k	680

NOTE
 • Voltages and waveforms are dc with respect to ground under no-signal (detuned) conditions.
 no mark:FM
 ():CD PLAY
 * :can not be measured.

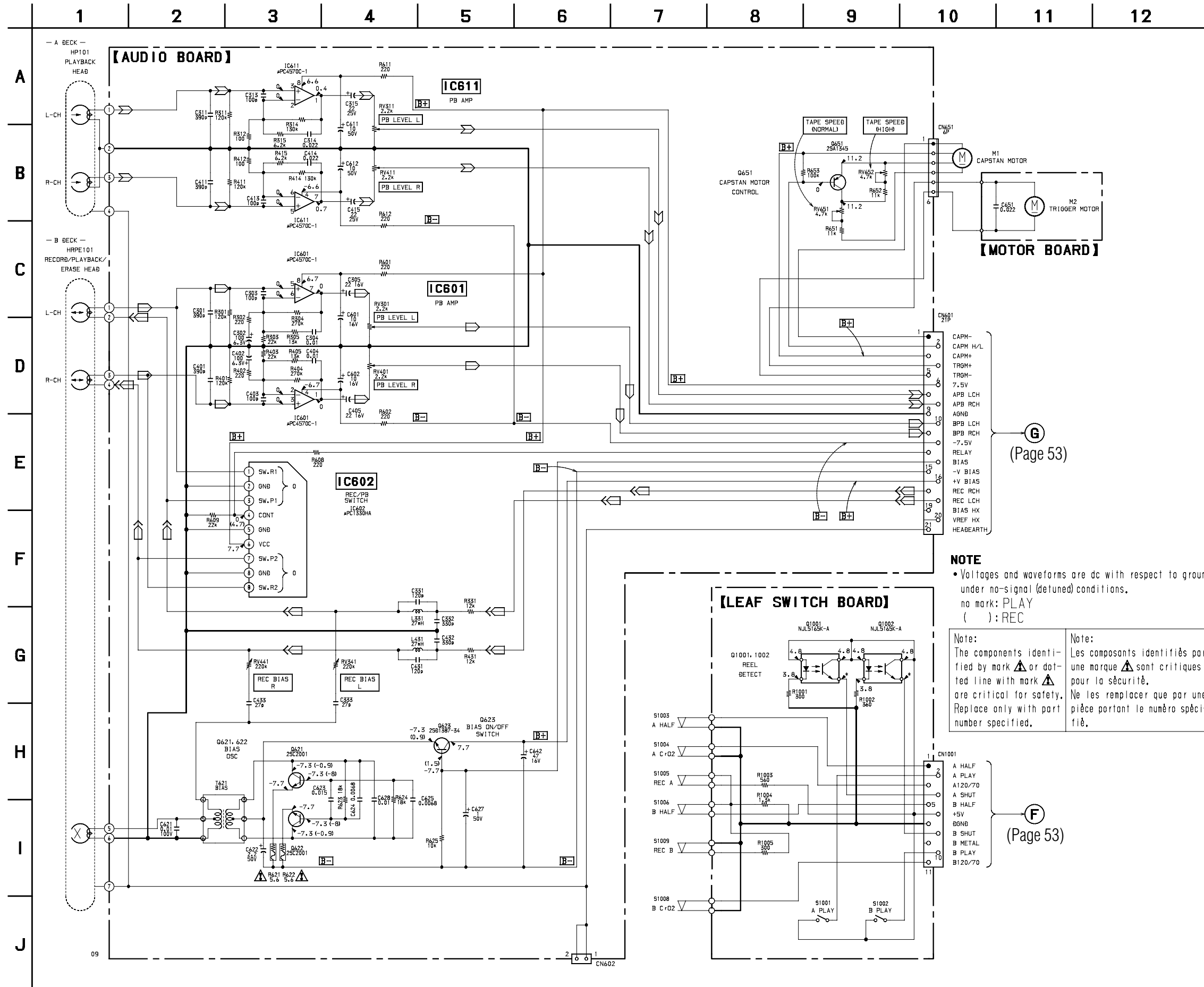
6-12. SCHEMATIC DIAGRAM – MAIN (3/5) SECTION –
 • See page 43 for Printed Wiring Board.



6-13. SCHEMATIC DIAGRAM – MAIN (4/5) SECTION –
 • See page 43 for Printed Wiring Board.



6-16. SCHEMATIC DIAGRAM – DECK SECTION –
 • See page 91 for IC Block Diagrams.



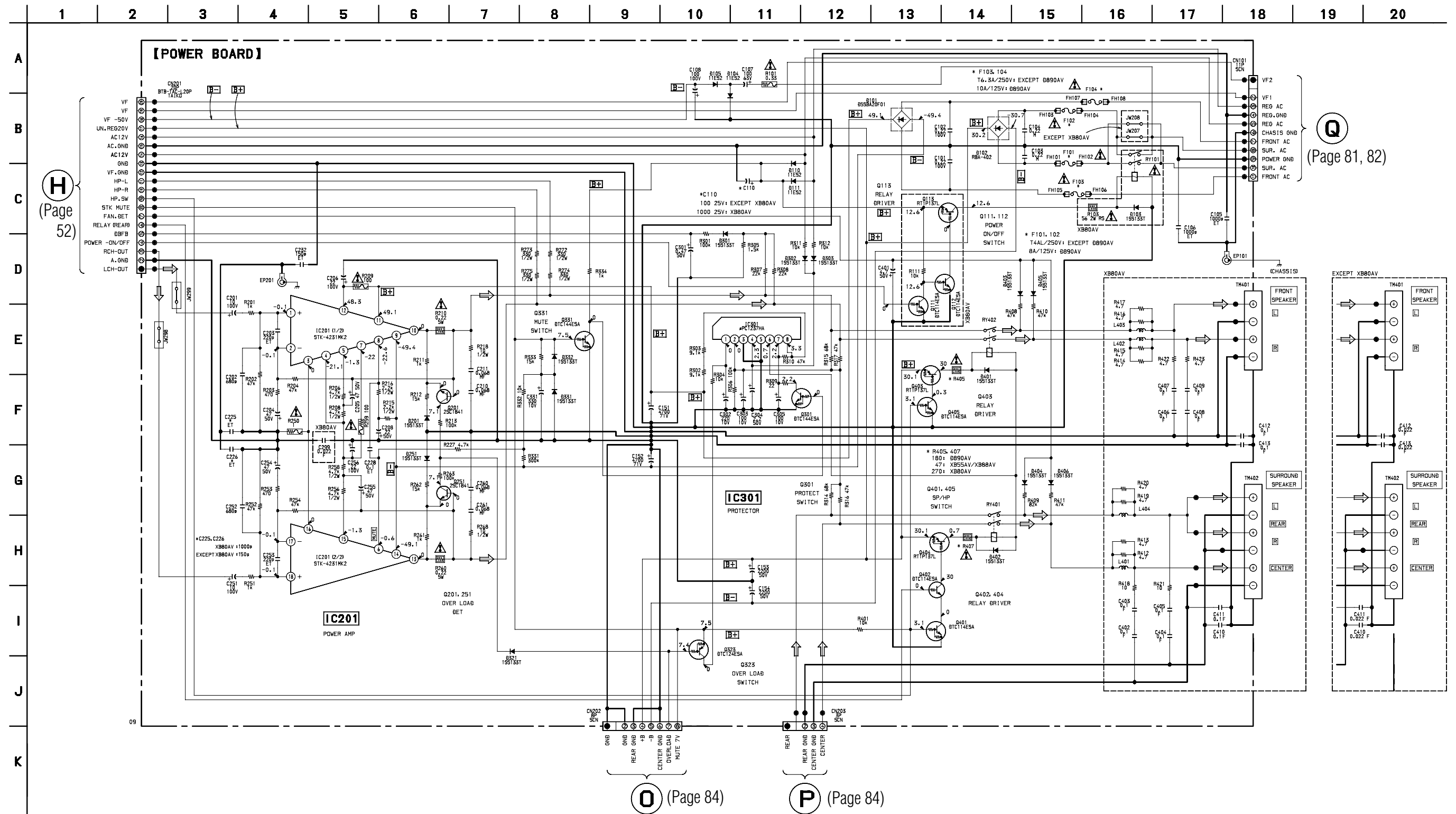
NOTE
 • Voltages and waveforms are dc with respect to ground under no-signal (detuned) conditions.
 no mark: PLAY
 (): REC

<p>Note: The components identified by mark ▲ or dotted line with mark ▲ are critical for safety. Replace only with part number specified.</p>	<p>Note: Les composants identifiés par une marque ▲ sont critiques pour la sécurité. Ne les remplacer que par une pièce portant le numéro spécifié.</p>
--	---

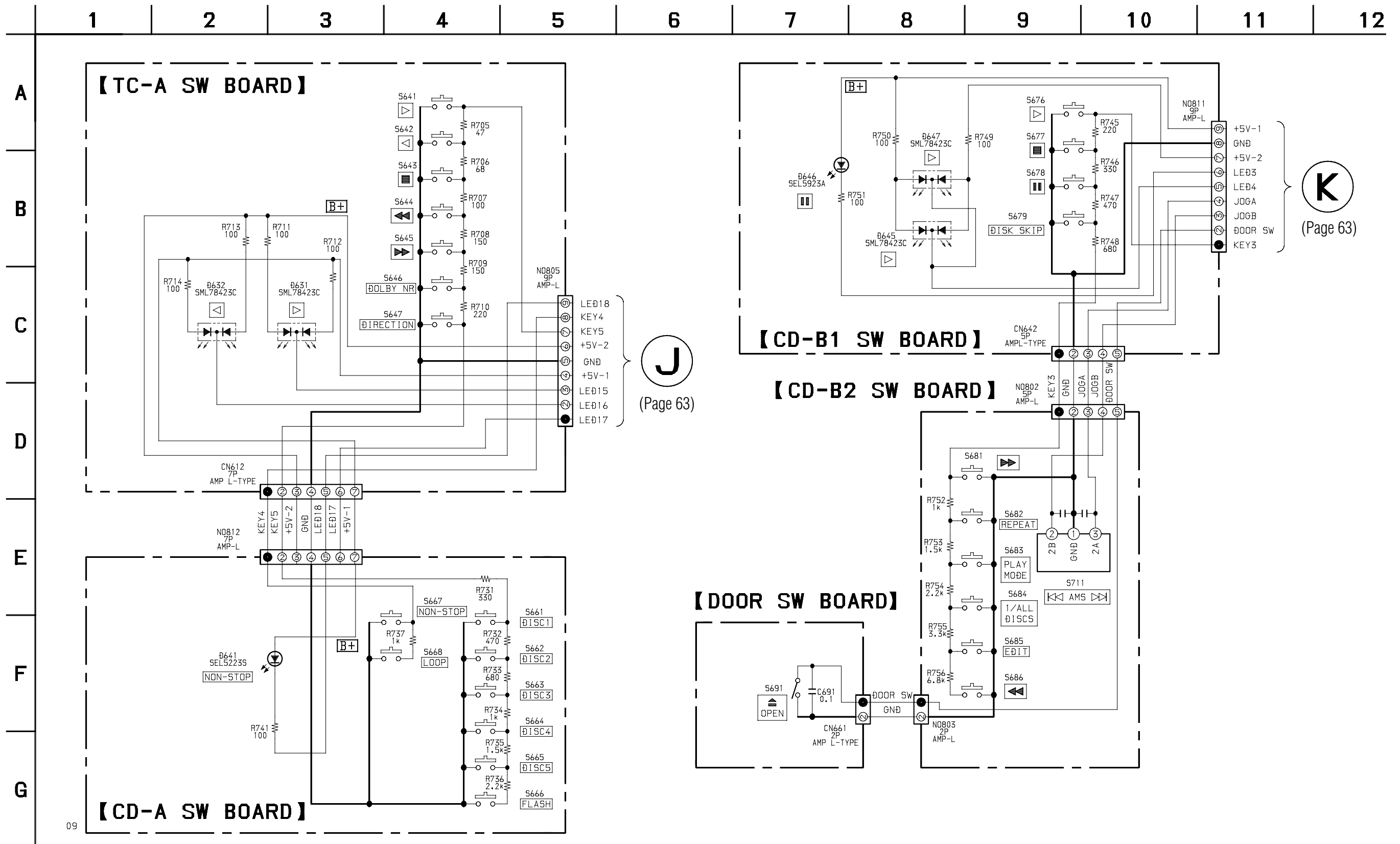
(Page 53)

(Page 53)

6-18. SCHEMATIC DIAGRAM – POWER SECTION –
 • See page 91 for IC Block Diagrams.



6-22. SCHEMATIC DIAGRAM – TC/CD PANEL-1 SECTION –

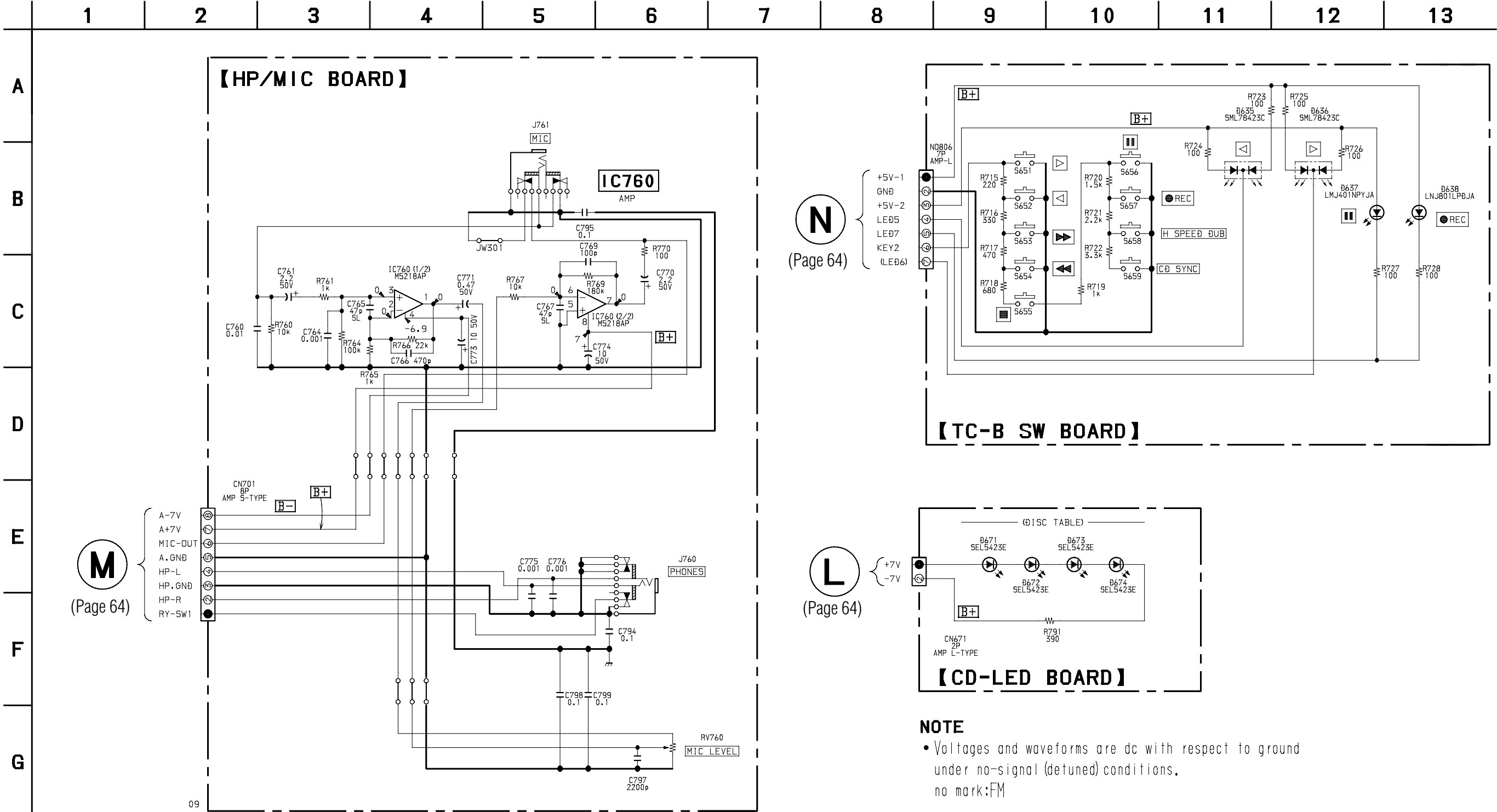


K
(Page 63)

J
(Page 63)

09

6-23. SCHEMATIC DIAGRAM – HP/MIC SECTION –



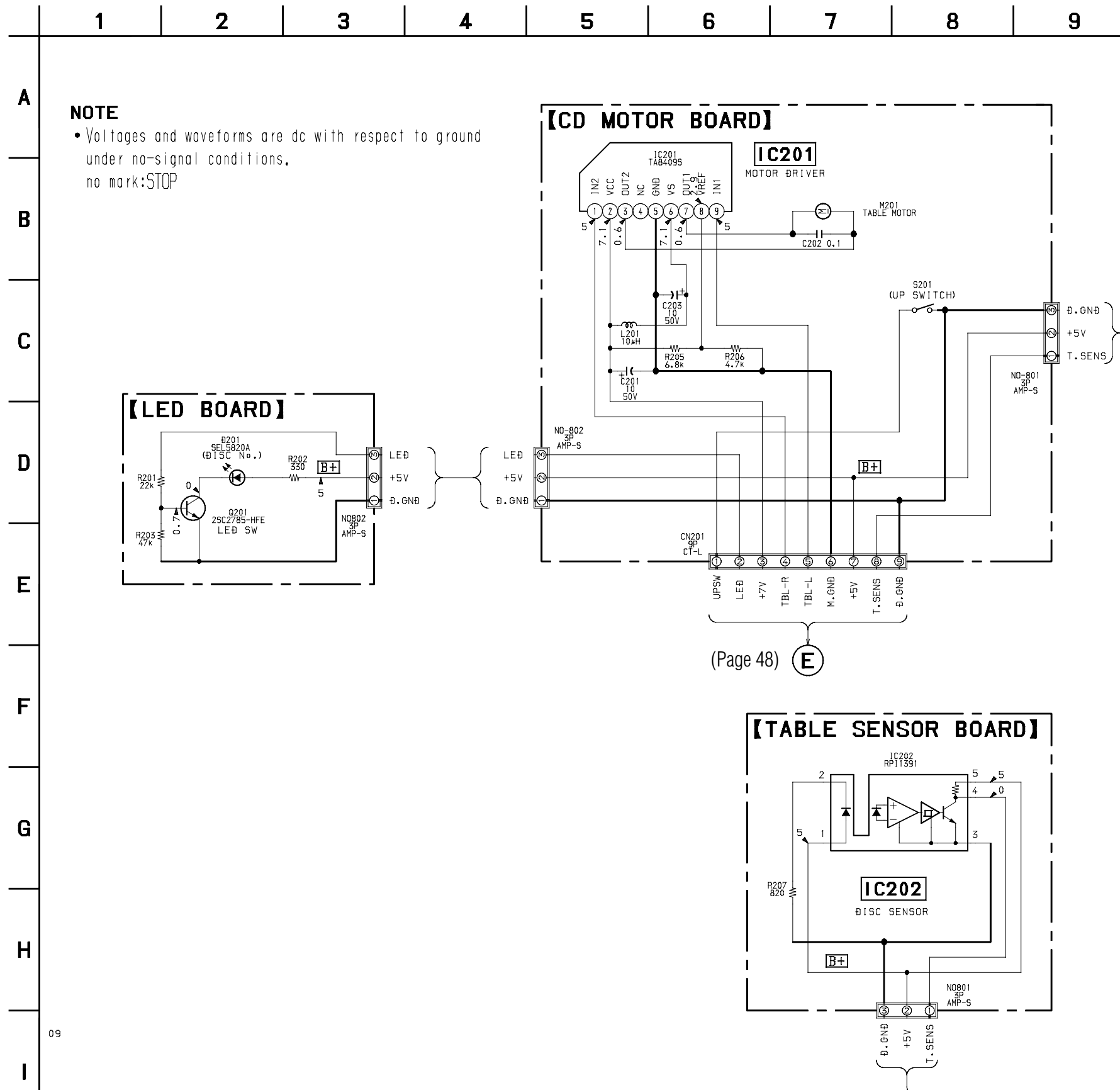
M
(Page 64)

N
(Page 64)

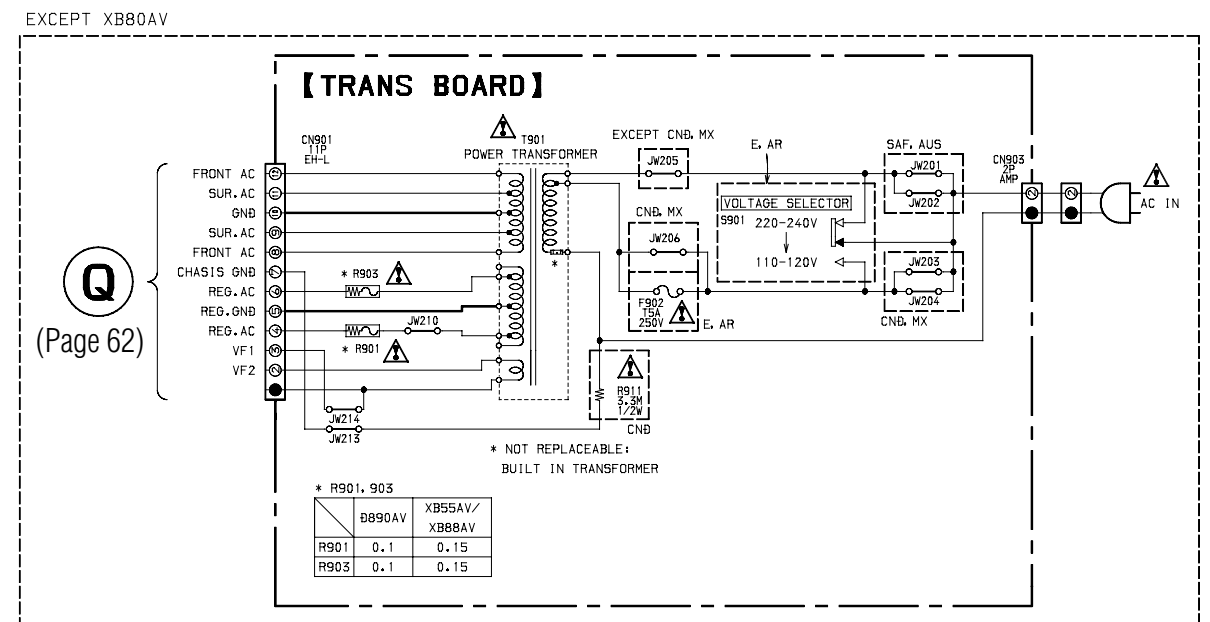
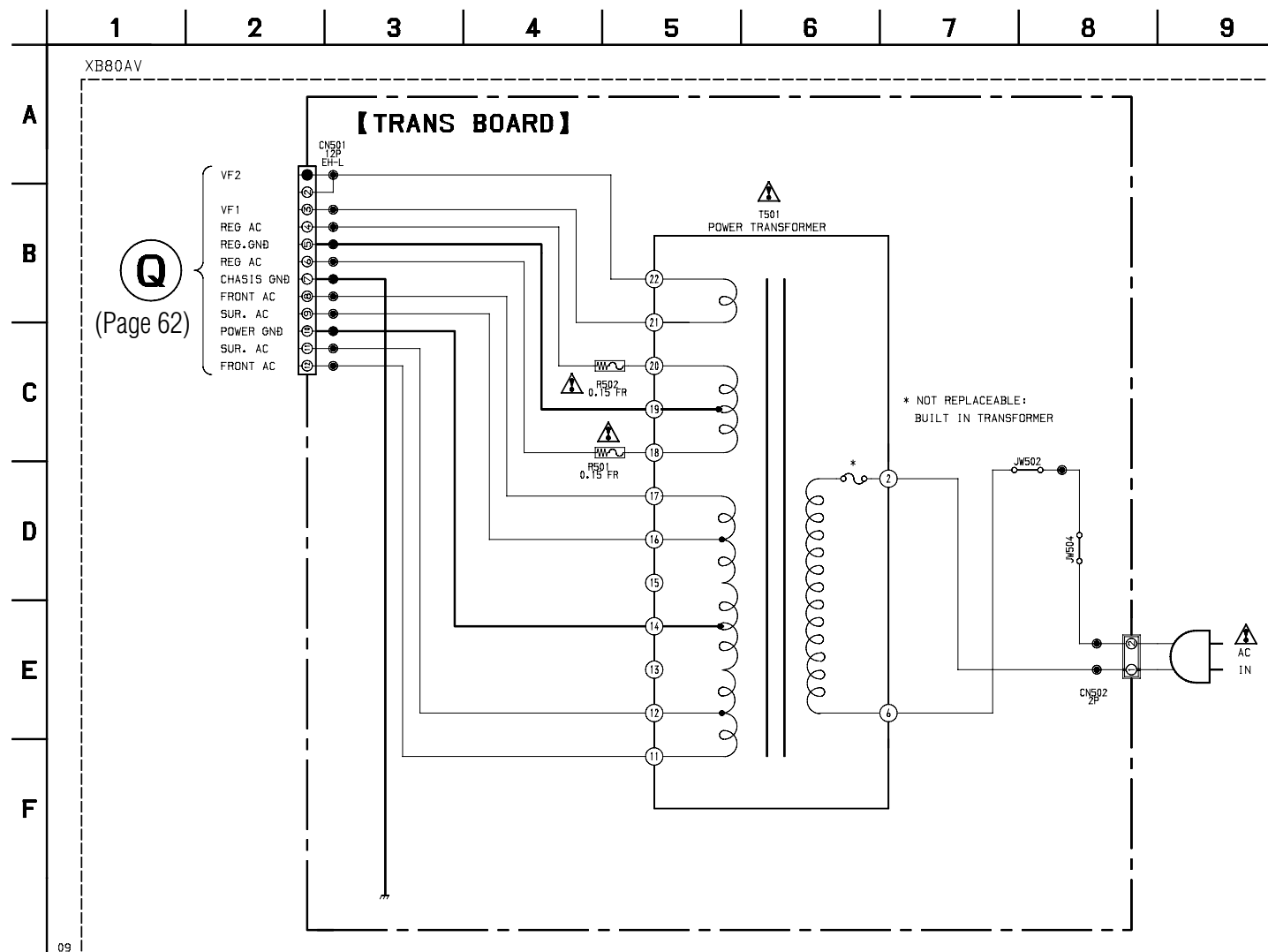
L
(Page 64)

NOTE
 • Voltages and waveforms are dc with respect to ground under no-signal (detuned) conditions.
 no mark:FM

6-26. SCHEMATIC DIAGRAM – CD MOTOR SECTION –
 • See page 91 for IC Block Diagrams.



6-28. SCHEMATIC DIAGRAM – TRANS SECTION –

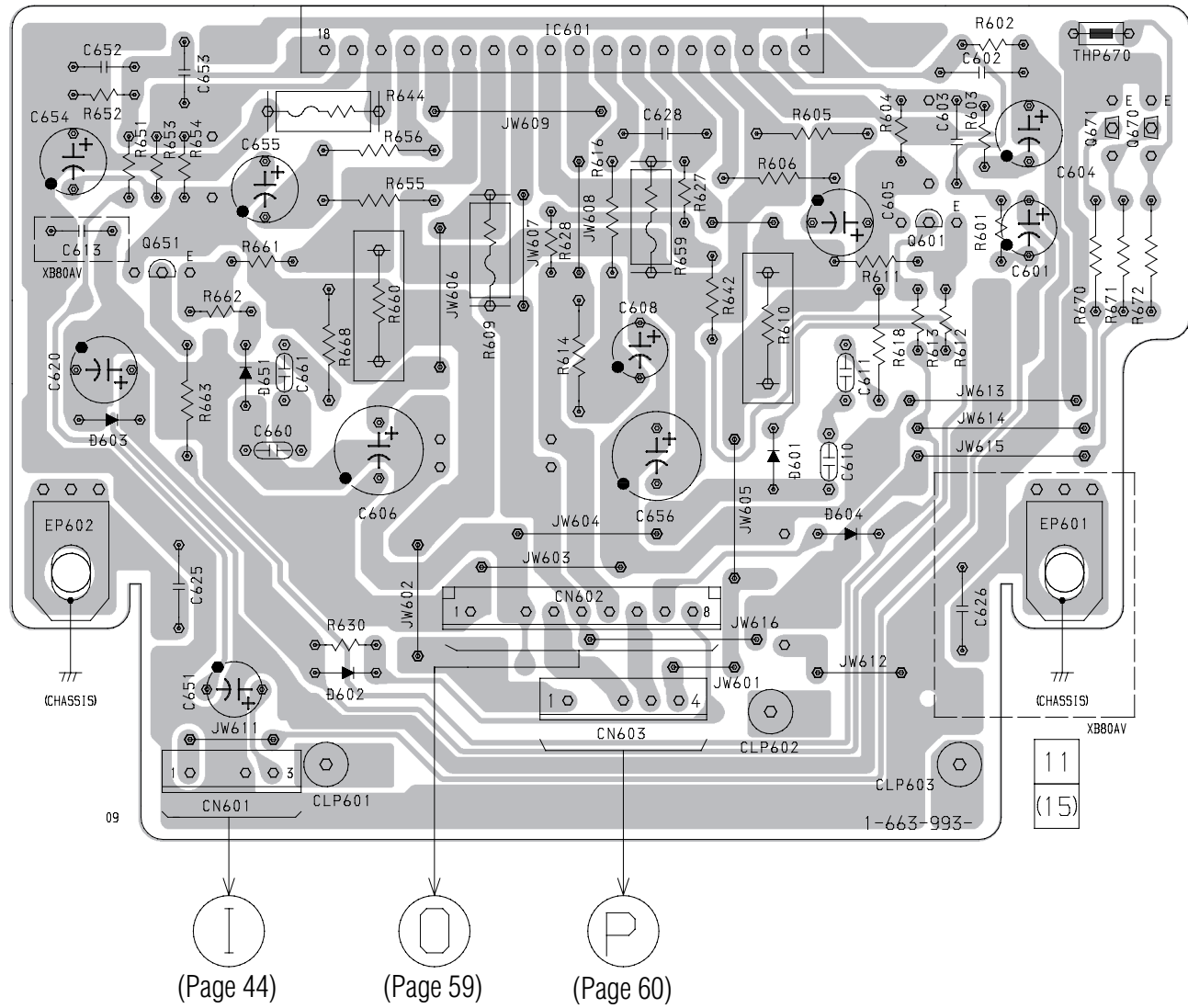


Note:
The components identified by mark or dotted line with mark are critical for safety. Replace only with part number specified.

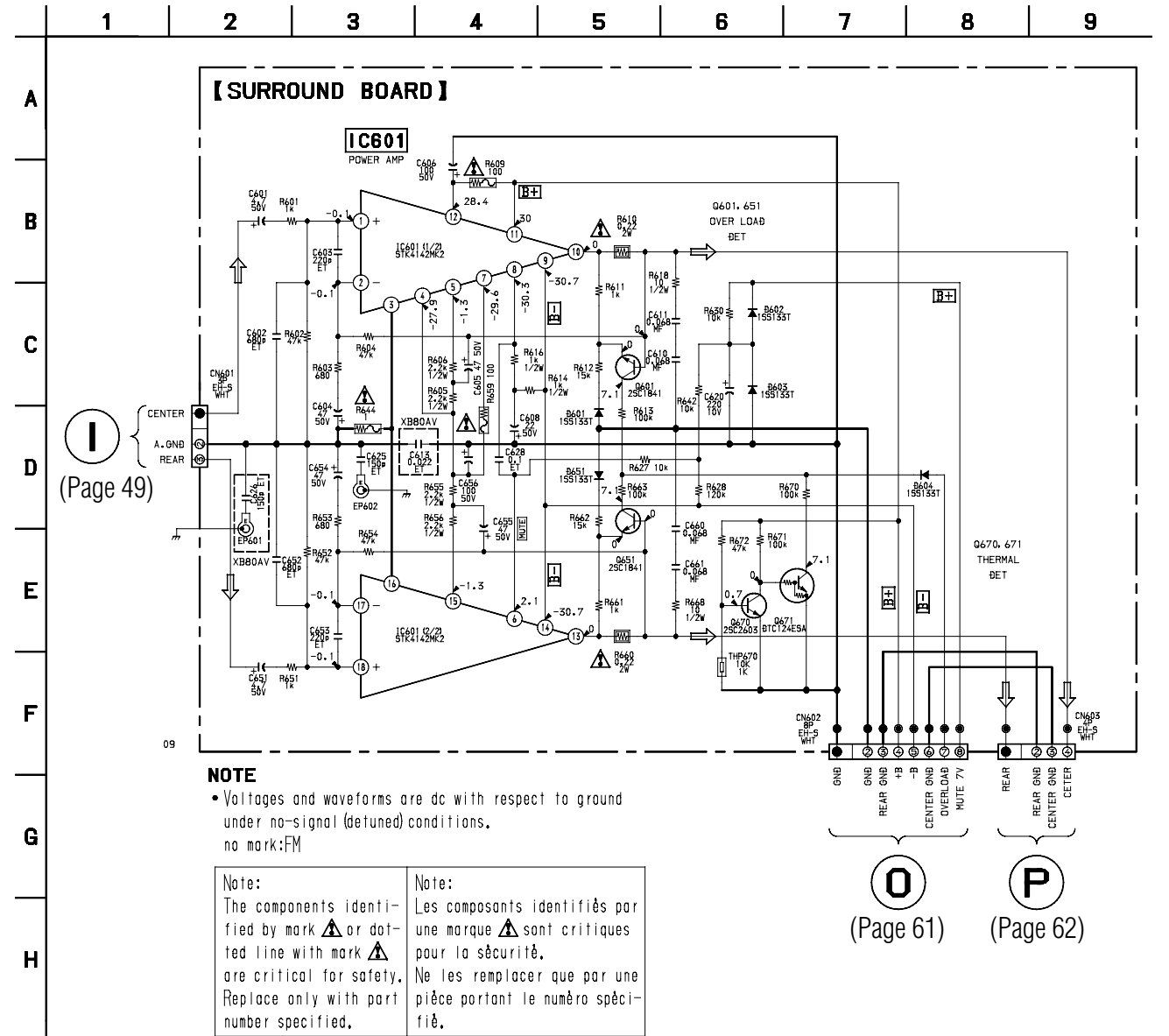
Note:
Les composants identifiés par une marque sont critiques pour la sécurité. Ne les remplacer que par une pièce portant le numéro spécifié.

6-29. PRINTED WIRING BOARD – SURROUND SECTION –
• See page 18 for Circuit Boards Location.

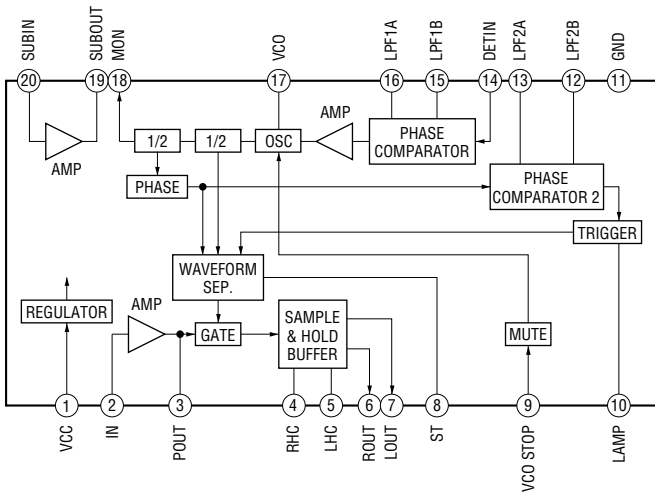
【 SURROUND BOARD 】



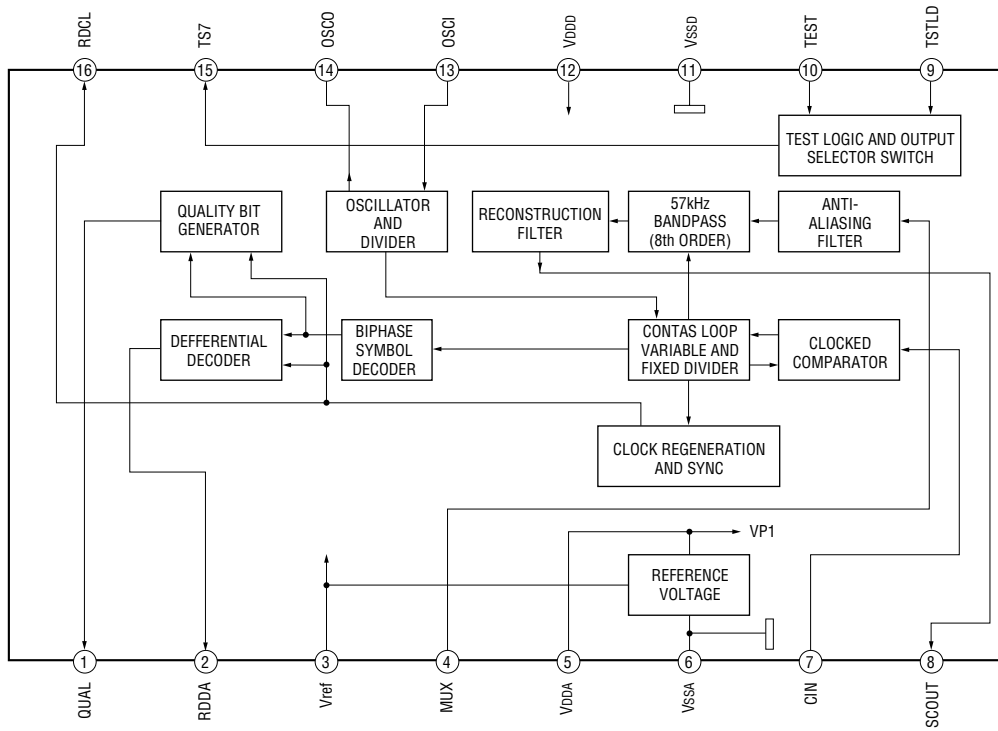
6-30. SCHEMATIC DIAGRAM – SURROUND SECTION –



IC1701 IR3R42

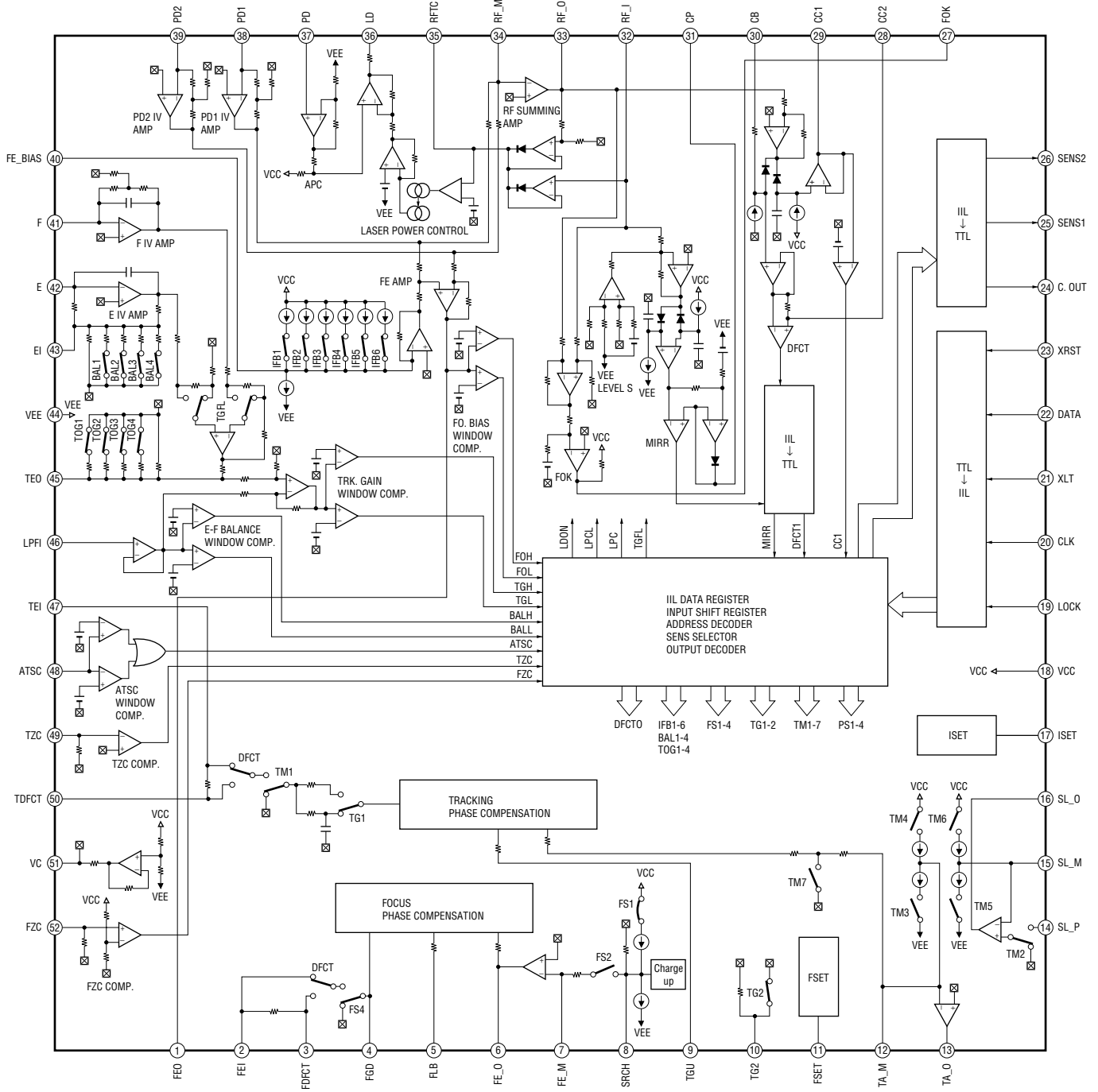


IC1752 BU1922

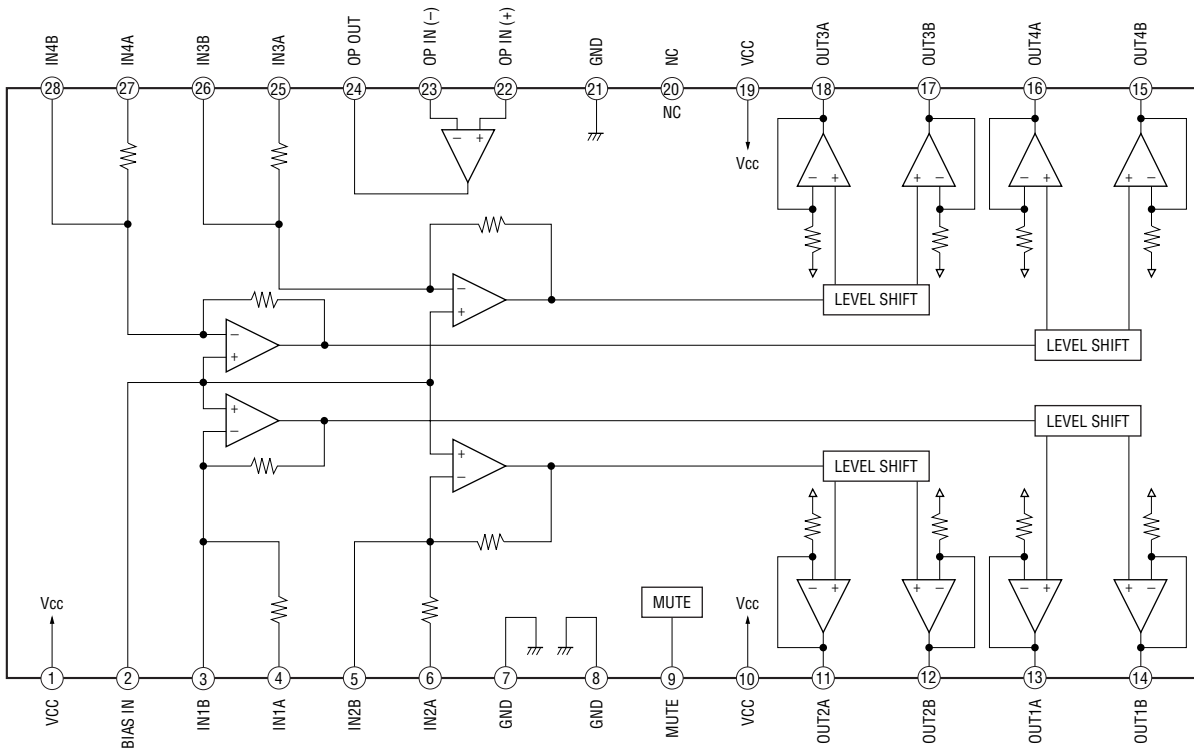


• CD section

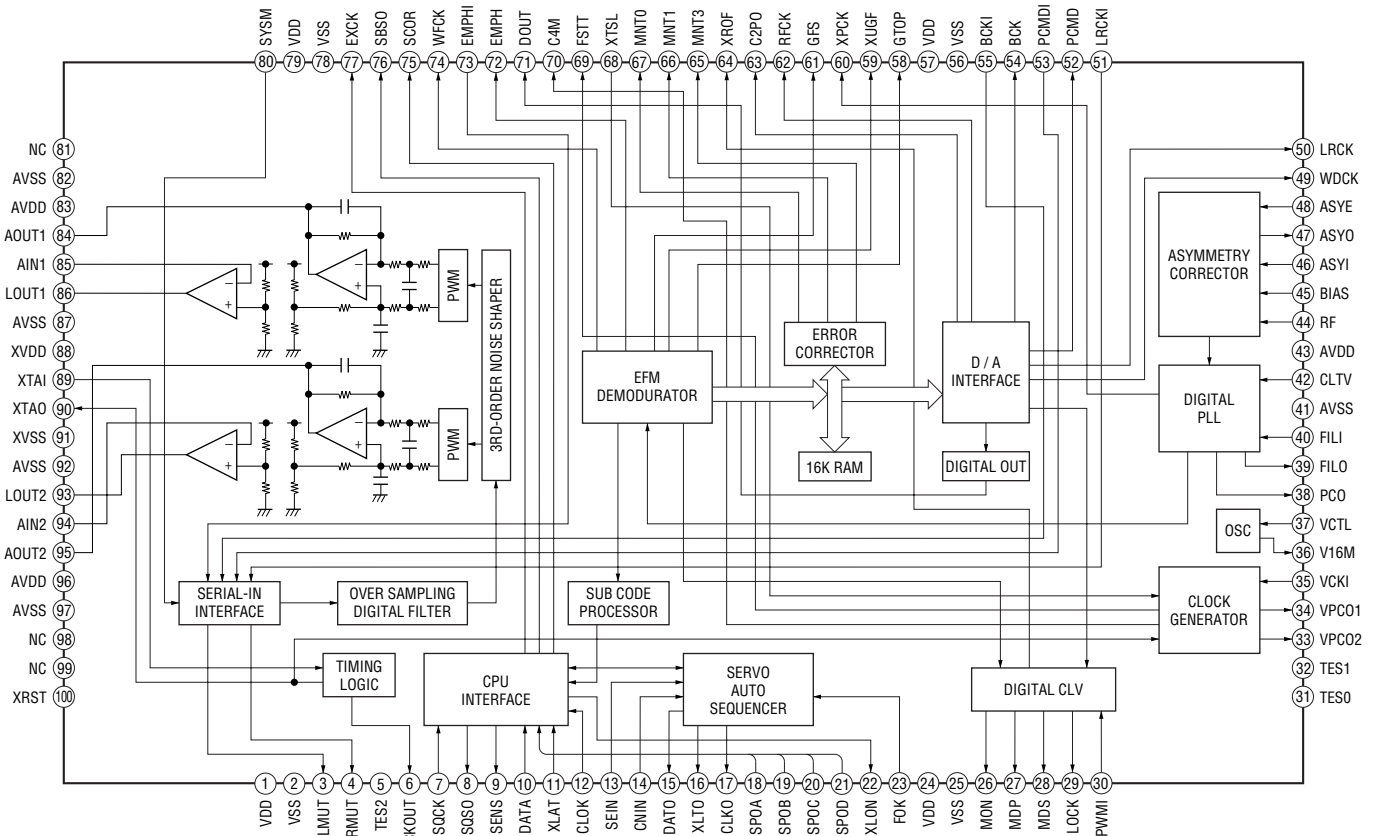
IC101 CXA1992AR



IC102 BA5941FP

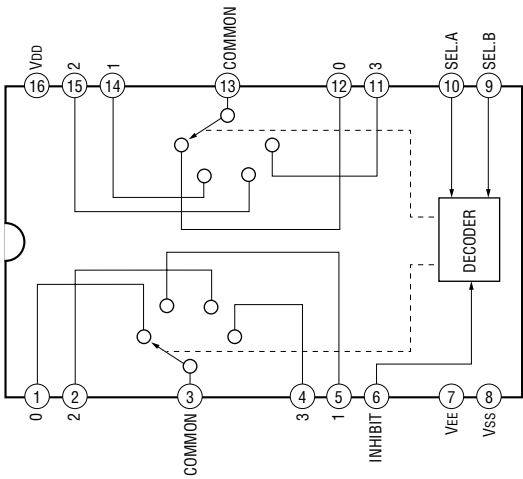


IC103 CXD2519Q

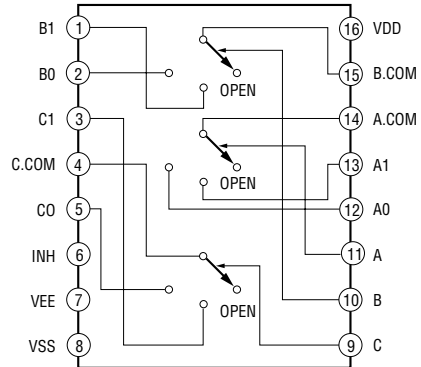


• Main section

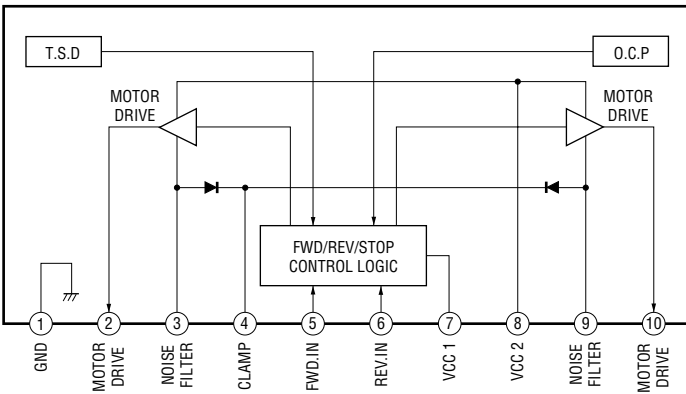
IC102 MC14052BCP



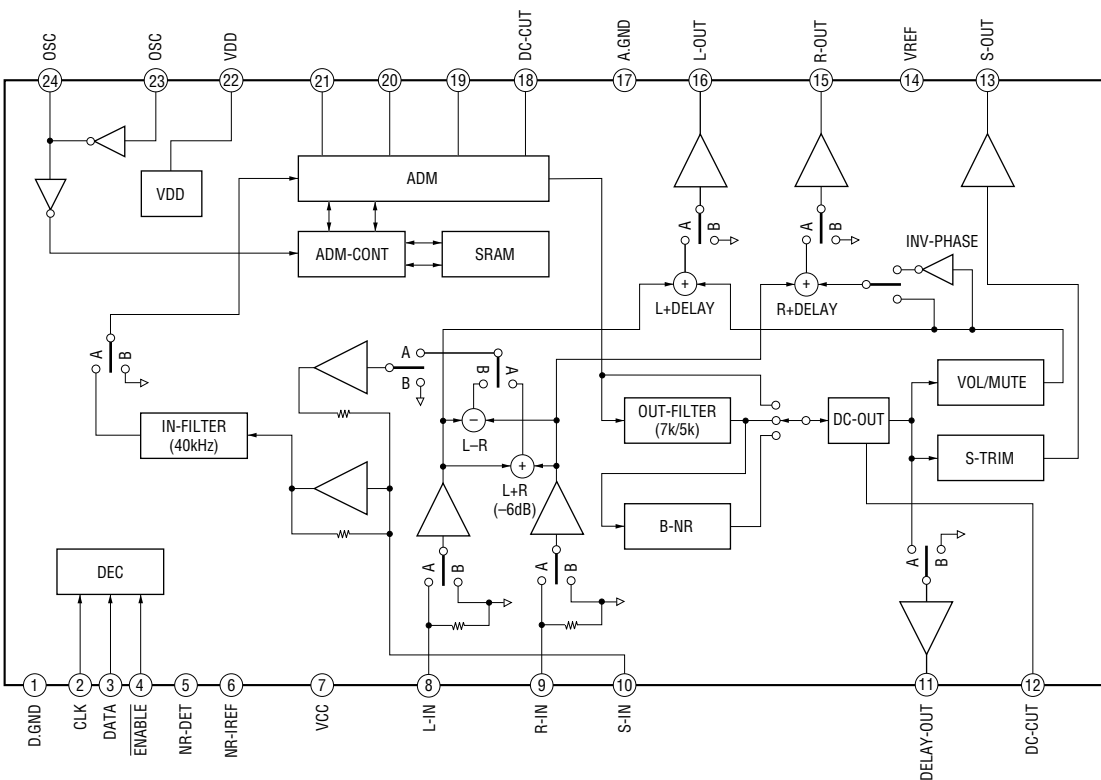
IC103, 1403, 1702 MC14053BCP



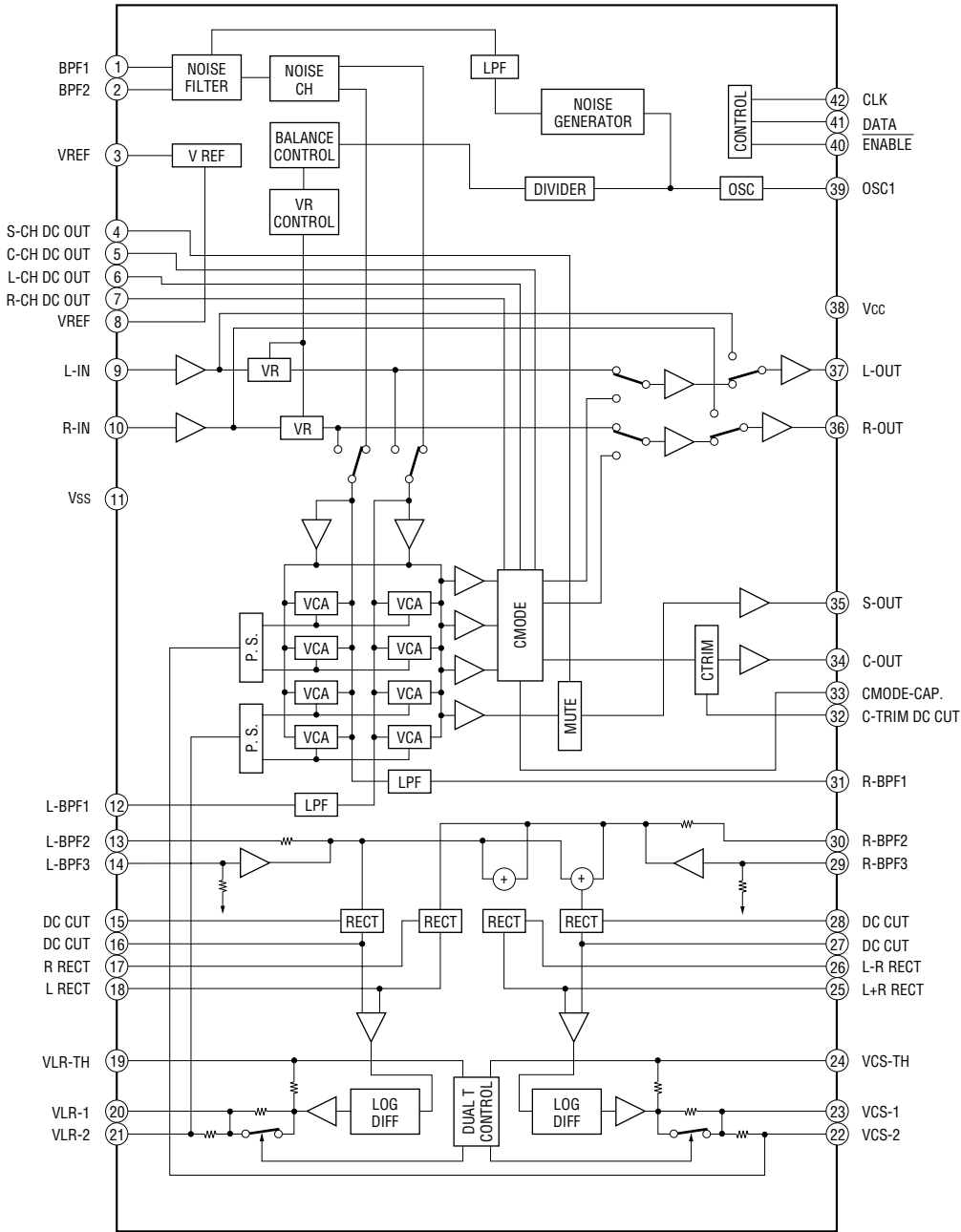
IC402 LB1641



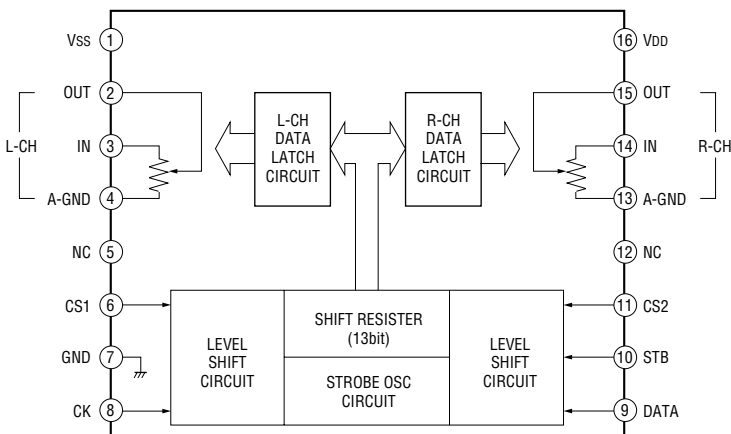
IC602 LV1016



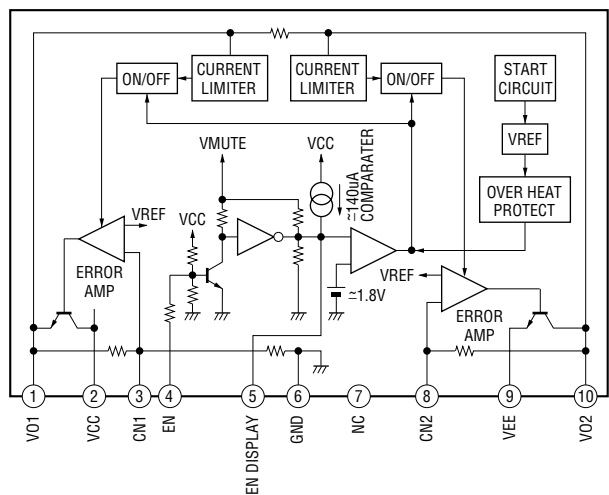
IC601 LA2786



IC604 TC9210P

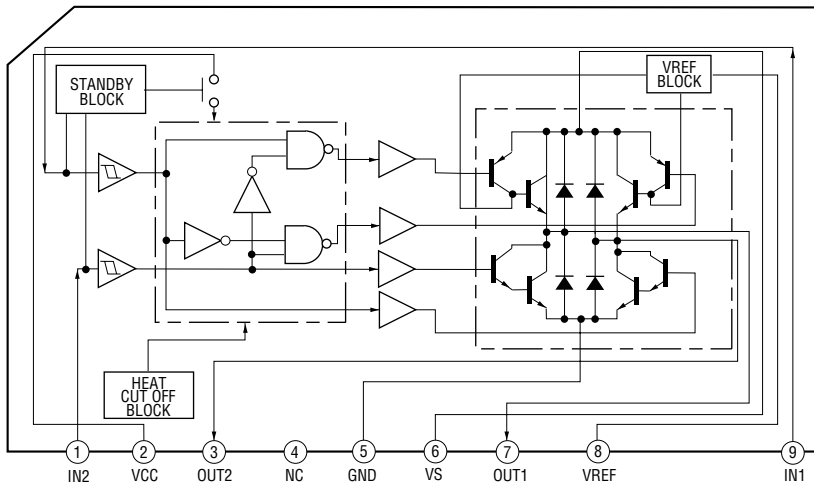


IC901 LA5617



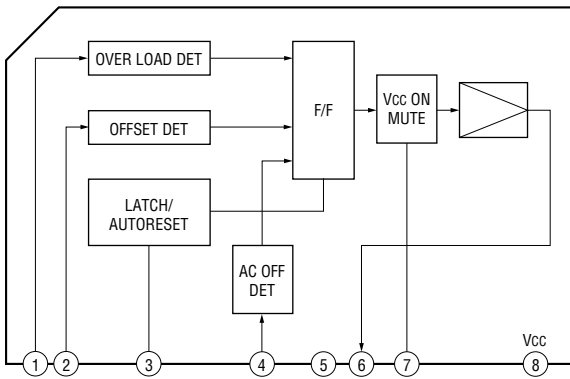
• CD motor section

IC201 TA8409S



• Power section

IC301 uPC1237HA



• Deck section

IC602 uPC1330HA

