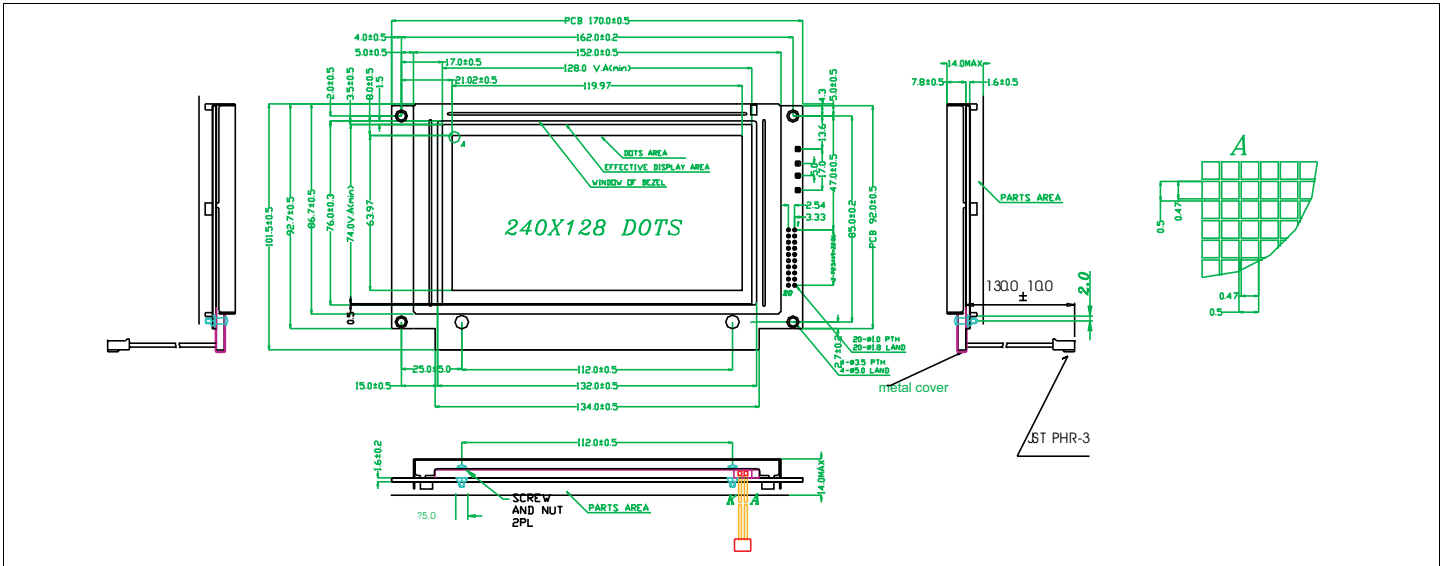


HDM128GS24L-1

Dimensional Drawing

240 X 128 Dots Graphic White LED Backlight



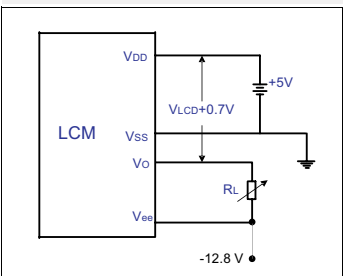
- Features**
- Backlight.....White LED
Extended Temperature
 - Built-in Controller.....T6963
 - Touch screen.....none

- Physical Data**
- Module Size.....170.0W x 101.5H x 14.0 mm
 - Viewing Area Size.....128.0W x 74.0H mm
 - Dot Pitch.....0.50W x 0.50H mm
 - Dot Size.....0.47W x 0.47H mm
 - Weight.....224g

Electrical Characteristics (VDD=5.0±0.25V 25°C)

PARAMETER	SYM	CONDITION	MIN	TYP	MAX	UNIT
SUPPLY VOLTAGE	V _{DD}	-	4.5	5.0	5.5	V
	V _{EE}	-	-	-12.8	-	V
LED FORWARD VOLTAGE	V _{AK}	I _{AK} =240mA	2.9	3.2	3.5	V
LED FORWARD CURRENT	I _{AK}	V _{AK} =3.2V	-	240	-	mA
DRIVE METHOD			1/240 DUTY			

Power Supply



Absolute Maximum Ratings

PARAMETER	SYMBOL	MIN	MAX	UNIT
SUPPLY VOLTAGE	V _{DD}	0	7.0	V
INPUT VOLTAGE	V _{IN}	-	V _{DD} +0.3	V
OPERATING TEMPERATURE	T _{OP}	-20	+70	°C
STORAGE TEMPERATURE	T _{STG}	-30	+85	°C

Pin Connections

PIN NO.	SYMBOL	LEVEL	FUNCTION
DATA CONNECTOR			
1	FG	GND	FRAME GROUND (0V)
2	VSS	GND	GROUND (0V)
3	VDD	+5V	POWER SUPPLY
4	VL	-	POWER SUPPLY FOR LCD DRIVER
5	WR	L	WRITE SIGNAL
6	RD	L	READ SIGNAL
7	CE	L	CHIP ENABLE INPUT
8	C/D	L/H	H INSTRUCTION CODE, L DATA
9	NC	-	NO CONNECTION
10	RESET	L	RESET SIGNAL
11	Db0	H/L	Display Data
12	Db1		
13	Db2		
14	Db3		
15	Db4		
16	Db5		
17	Db6		
18	Db7		
19	FS1	L/H	FONT SELECT
20	RV	L/H	NORMAL / REVERSE DISPALY