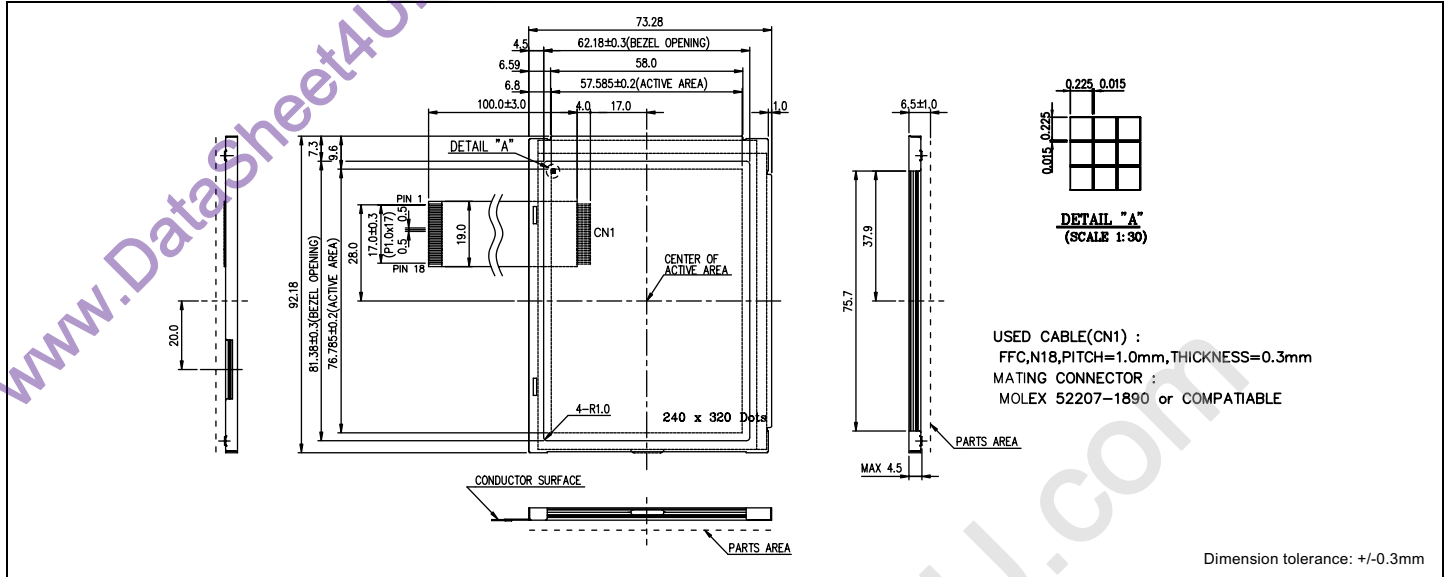


HDM3224-T

液晶之友 电话: 020-33819057
[Http://www.lcdfriends.com](http://www.lcdfriends.com)

Dimensional Drawing

240 X320 Dots Graphic, Small Size, EL Backlight



Features

- Backlight.....EL (Built-in Inverter)
- Options.....Black and White FSTN
- Extended Temperature
- 6 O'clock Viewing
- DC/DC Converter
- Built-in Controller.....None

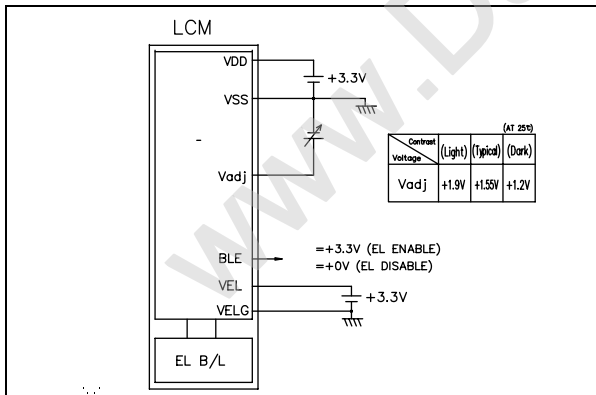
Physical Data

- Module Size.....73.28W x 92.18H x 6.5T mm
- Viewing Area Size.....62.18W x 81.38H mm
- Dot Pitch.....0.24W x 0.24H mm
- Dot Size.....0.225W x 0.225H mm
- Weight.....63.6g

Electrical Characteristics (VDD=3.3±0.25V 25°C)

PARAMETER	SYM	CONDITION	MIN	TYP	MAX	UNIT
INPUT HIGH VOLTAGE	V _{IH}	-	0.8 V _{DD}	-	-	V
INPUT LOW VOLTAGE	V _{IL}	-	-	-	0.2 V _{DD}	V
OUTPUT HIGH VOLTAGE	V _{OH}	I _{OH} =0.4mA	V _{DD} -0.4	-	-	V
OUTPUT LOW VOLTAGE	V _{OL}	I _{OL} =0.4mA	-	-	0.4	V
SUPPLY VOLTAGE	V _{DD}	-	3.0	3.3	3.6	V
	V _{EL}	-	3.0	3.3	3.6	V
SUPPLY CURRENT	I _{DD}	3.3V	-	4.4	6.6	mA
	I _{EL}	3.3V	-	16	24	mA
DRIVE METHOD	1/240 DUTY					

Power Supply



Pin Connections

PIN NO.	SYMBOL	LEVEL	FUNCTION
DATA CONNECTOR			
1	CL2	H/L	Data shift clock
2	CL1	H/L	Data Latch clock
3	FLM	H/L	First Line Marker
4	/DISPOFF	H/L	H = Display ON, L = Display OFF
5	D0	H/L	Display data
6	D1	H/L	
7	D2	H/L	
8	D3	H/L	
9	V _{Adj}	-	Contrast adjustment voltage
10	VDD	3.3V	Power supply for logic
11	V _{GND}	0V	Gnd for VDD power supply
12	BLE	H/L	PH: EL Enabled; L: EL Disabled
13	VELG	0V	Power supply for EL
14	VEL	3.3V	Power supply for EL
15	N/C	-	
16	N/C	-	No connection
17	N/C	-	
18	N/C	-	

Absolute Maximum Ratings

PARAMETER	SYMBOL	MIN	MAX	UNIT
SUPPLY VOLTAGE	V _{DD} -V _{SS}	0	7.0	V
INPUT VOLTAGE FOR V _{Adj}	V _{Adj}	0	30.0	V
INPUT VOLTAGE	V _{IN}	1.2	2.0	V
OPERATING TEMPERATURE	T _{OP}	-20	70	°C
STORAGE TEMPERATURE	T _{STG}	-30	80	°C