

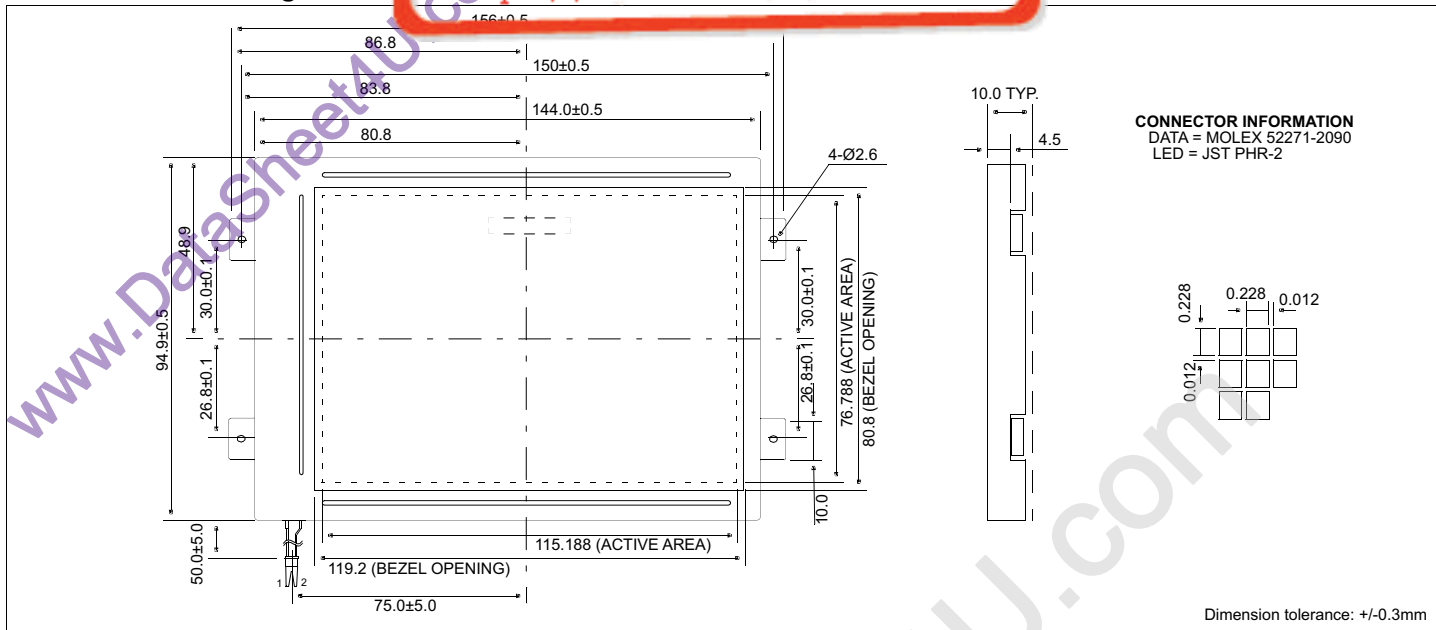
HDM4832L

Dimensional Drawing

液晶之友 电话: 020-33819057
 Http://www.lcdfriends.com

480 X 320

dots Graphics White LED Backlight



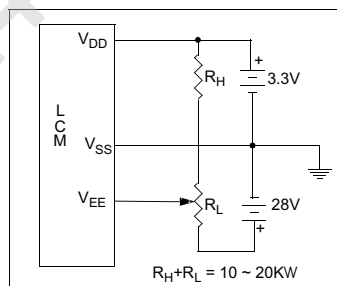
Features

Backlight.....White LED
 Options.....FSTN, Wide Temperature, Bottom Viewing
 Built-in Controller.....None

Physical Data

Module Size.....156.0W x 94.9H x 11.5T mm
 Viewing Area Size.....119.2W x 80.8H mm
 Dot Pitch.....0.24W x 0.24H mm
 Dot Size.....0.228W x 0.228H mm
 Weight.....132g

Power Supply



Absolute Maximum Ratings

PARAMETER	SYMBOL	MIN	MAX	UNIT
SUPPLY VOLTAGE	V _{DD} -V _{SS}	-0.3	6.5	V
SUPPLY VOLTAGE FOR LCD	V _{EE} -V _{SS}	0	27.0	V
INPUT VOLTAGE	V _{IN}	-	7.0	V
OPERATING TEMPERATURE	T _{OP}	-20	70	°C
STORAGE TEMPERATURE	T _{STG}	-30	80	°C

Electrical Characteristics (V_{DD}=3.3±0.5V 25°C)

PARAMETER	SYM	CONDITION	MIN	TYP	MAX	UNIT
LOGIC POWER SUPPLY	V _{DD}	T _A =25°C	2.7	3.3	5.5	V
INPUT HIGH VOLTAGE	V _{IH}	-	-	0.2V _{DD}	-	V
INPUT LOW VOLTAGE	V _{IL}	-	-	0.8V _{DD}	V _{DD}	V
LCD OPERATING VOLTAGE	VEE-VSS	T _A =-20°C	25.2	25.7	26.2	V
		T _A =0°C	23.4	23.9	24.4	
		T _A =25°C	22.4	22.9	23.4	
		T _A =50°C	21.5	22.0	22.5	
		T _A =70°C	20.8	21.3	21.8	
POWER SUPPLY CURRENT	I _{DD}	V _{DD} =3.3V	-	0.2	0.6	mA
	I _{EE}	V _{EE} =22.9V	-	13	18	mA
LED FORWARD VOLTAGE	V _F	-	3.6	4.0	4.4	V
LED FORWARD CURRENT	I _F	-	120	140	160	mA
BRIGHTNESS	L	I _{LED} =140mA	36	-	51	cd/m ²
DRIVE METHOD	1/240 DUTY					

Pin Connections

PIN NO.	SYMBOL	FUNCTION	
1	GND	Signal Ground	
2	GND		
3	V _{DD}	+3.3v	Logic Power Supply
4	FLM	H/L	Frame Pulse
5	M	-	Alternating Signal
6	CL1	H/H®L	Data latch signal
7	ENAB	H	Display Enable
8	CL2	H/H®L	Data Shift
9	D0	H/L	Data bus
10	D1	H/L	
11	D2	H/L	
12	D3	H/L	
13	D4	H/L	
14	D5	H/L	
15	D6	H/L	
16	D7	H/L	
17	V _{EE}	-	Power supply voltage for LC
18	V _{DD}	+3.3v	Logic Power Supply
19	GND	Signal Ground	
20	GND		