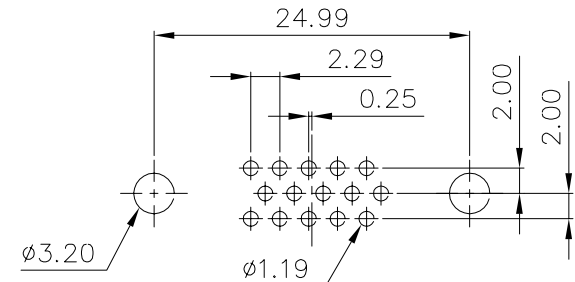
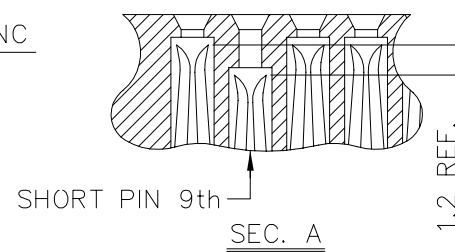
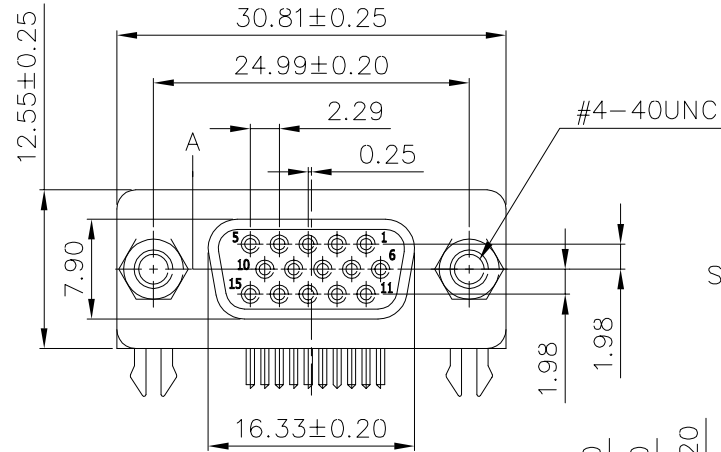
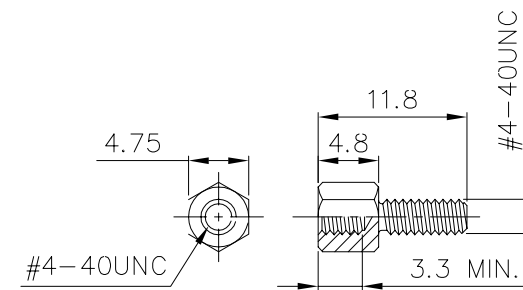
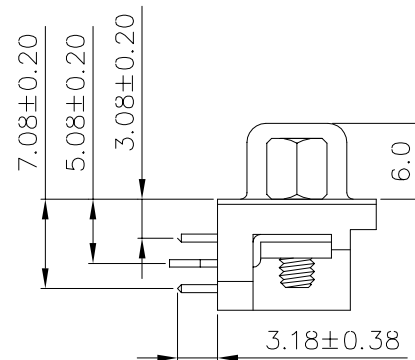
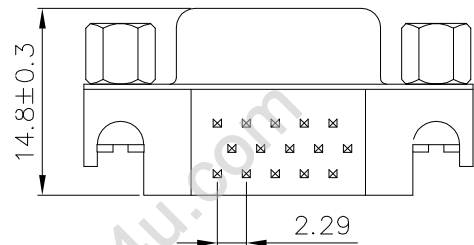


Material:  
 Insulator: PBT+30% Glass Fiber (UL94V-0).  
 Contact: Copper Alloy.  
 Contact Plated: Gold or Tin over Nickel Plated.  
 Shell: Steel with Nickel or Tin or Zinc Plated.

Specification:  
 Current Rating: 5 Amps.  
 Withstanding Voltage: AC 500V for 1 Minute.  
 Insulation Resistance: 1000MΩ Min. at DC 500V.  
 Contact Resistance: 15mΩ Max..  
 Operating Temperature: -40°C ~ +105°C.



RECOMMEND P.C. BOARD LAYOUT



LOCKING SCREW

**MORETHANALL**  
 CONNECTORS  
 ASSEMBLIES

焯倫有限公司

PART NO. <b>HDR30-SNH-15</b>		CHECKED BY <b>CY</b>	TOLERANCES ARE .X ± 0.20 .XX ± 0.10 .XXX ± AWG	DESCRIP TION: 15P Hi-Density Female D-Sub Right Angle Connector Footprint 3.08mm Short Pin 9th/Clinch Nut/Screw Lock Type	AREA	REVISIONS	HK	DATE
DWG NO. <b>HDR30-SNH-15</b>								
FILE NO.		DRAWING BY						
UNIT / mm	SCALE 1:1	PROJECTION						